

**OBEX™ BAR**  
ENTRANCE FLOORING

*Milliken™*



OBEX™ Bar Entrance Flooring:

## WELCOME TO WELLNESS.

Milliken entrance flooring is designed to stop dirt, moisture and other contaminants at the door and prevent them from spreading throughout your building. With the OBEX™ Bar modular system, debris and moisture are trapped within wide planks that can be kept clean with daily vacuuming. This will enable you to dramatically improve the cleanliness and air quality of interior spaces.

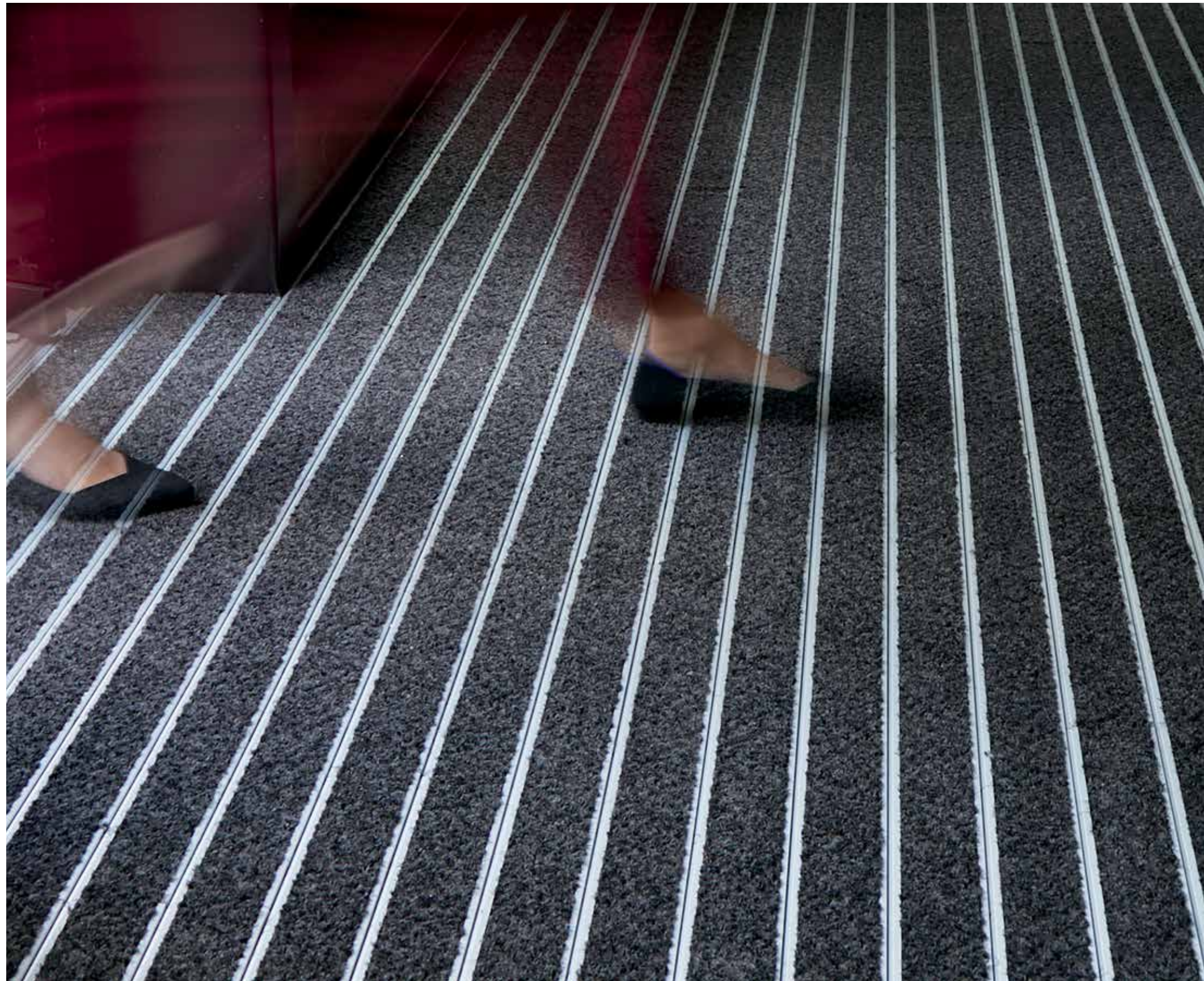
### **DID YOU KNOW**

70-90% of contaminants entering a facility are brought in through the front door? A properly installed OBEX™ system stops 98% of dirt and moisture from being tracked inside.



## THE PERFECT BLEND OF FORM AND FUNCTION.

The OBEX™ Bar modular plank design provides ample flexibility. Our simple click-together installation process requires no adhesive and can be built onsite to any size and layout. If a plank ever gets damaged, it can be easily replaced. Made of high-quality aluminum with a choice of Mono or CutX textile inserts, OBEX Bar delivers superior scraping action, while the pre-installed foam backing maximizes noise reduction from foot and rolled traffic.





The patented OBEX™ Bar click-together system keeps panels securely together.

## INSTALLATION MADE SIMPLE.

No floor prep or adhesives required.

Recessed or surface-mounted applications.

Cut to fit and install without special tools.

Planks click securely together.



INSTALLATION GUIDE  
Scan code for instructions on how to install OBEX Bar.

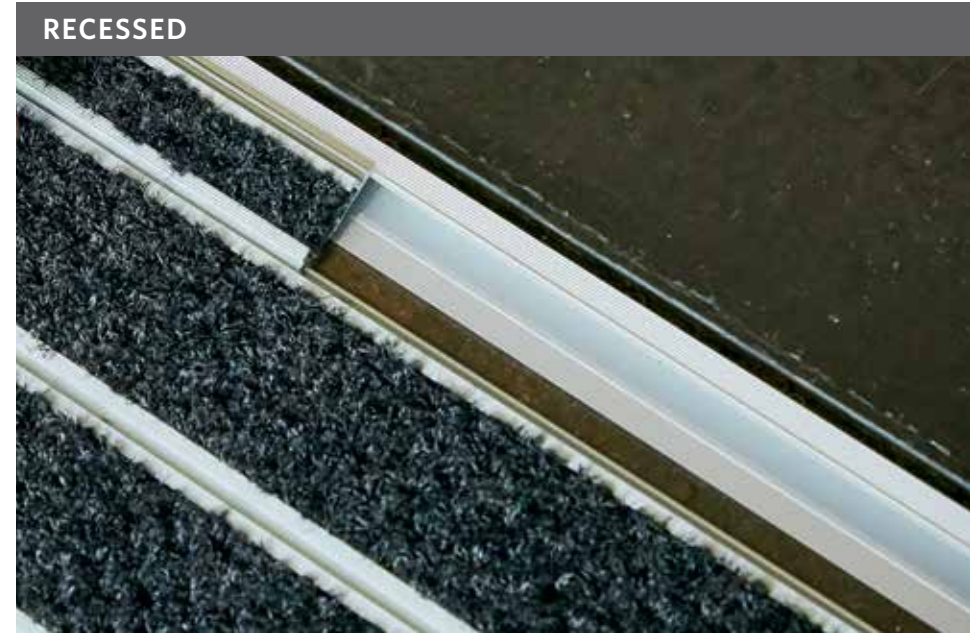




## CREATE SEAMLESS TRANSITIONS.

From exteriors to vestibules, OBEX™ Bar is well suited for all types of entrance locations. Its 11 mm height pairs seamlessly with other flooring, eliminating the need for transitions or recessing/cutting concrete. OBEX Bar can be installed in either recessed or surface-mounted applications.

*(Interior)* OBEX Bar shown in CutX Dark Grey. Recessed. OBEX Cut Tile in Drift Dark Grey.  
*(Exterior)* OBEX Bar shown in CutX Dark Grey. Surface Mounted.



RECESSED

**RECESSED INSTALLATIONS CAN BE CUT TO CREATE A VARIETY OF SHAPES.** The aluminum provides a smooth transition to the surrounding flooring. Half profiles and 5 mm aluminum spacers provide flexibility when making finished length adjustments. All three components come with the recessed installation kit.



SURFACE MOUNTED

**SURFACE-MOUNTED INSTALLATIONS USE A LOW-PROFILE FINISHING KIT.** The kit is comprised of ramps, corners and connectors. Aluminum front and side ramps connect to plank edges and are fastened to corners. Surface-mounted installations can only be rectangular shapes.

# MAINTAIN IN PLACE.

The OBEX™ Bar system allows cleaning in place without having to move or lift the product. Protocol for maintenance is daily vacuuming and hot-water extraction for deep cleaning.



# IN-STOCK, BOXED AND READY TO SHIP.

Getting started with OBEX™ Bar is easier than ever. Simply measure your space, choose the installation method and use our online calculator to help determine the quantity of boxes needed for your project.



### OBEX BAR QUANTITY CALCULATOR

Scan code for help determining the amount of product needed.

## OBEX BAR – MONO

Strong monofilament fibers use superior brushing action to capture debris from incoming traffic.



Grey

4000292548

## OBEX BAR – CUTX

An aggressive textile with extra monofilament fibers helps to successfully remove moisture and debris.



Grey

4000293783



Dark Grey

4000293782



## OBEX™ BAR

### MONO

#### BAR PROFILE

**Bar Material**

Extruded aluminum profile with high density polyethylene cushion backing

**Plank Width**

27.6 cm x 100 cm  
(10.87" x 39.37")

**Nominal Total Thickness**

0.43" (11 mm)

#### TEXTILE

**Construction**

Tufted, Cut Pile

**Yarn Type**

ECONYL®  
Monofilament

**Dye Method**

Solution Dyed

**Recommended****Maintenance**

Daily vacuum, deep clean via hot water extraction

### CUTX

#### BAR PROFILE

**Bar Material**

Extruded aluminum profile with high density polyethylene cushion backing

**Plank Width**

27.6 cm x 100 cm  
(10.87" x 39.37")

**Nominal Total Thickness**

0.43" (11 mm)

#### TEXTILE

**Construction**

Tufted, Cut Pile

**Yarn Type**

Milliken-Certified  
WearOn® Nylon and  
Monofilament

**Dye Method**

PrintWorks™  
Precision Dyeing

**Recommended****Maintenance**

Daily vacuum, deep clean via hot water extraction

### SUSTAINABLE FEATURES

OBEX Bar is certified SCS Indoor Advantage Gold with 27.5% pre-consumer and 9.3% post-consumer recycled content by total product weight.



Images in this brochure and architect folder are approximate for color and pattern scale. Please use actual carpet samples to make your final selections.

### SHOWN ON THE COVER

(Front Cover) OBEX Bar shown in Mono Grey. Surface Mounted.

(Back Cover) OBEX Bar shown in CutX Dark Grey. Recessed.

OBEX Cut Tile in Fizz Grey.

Milliken™