



étage®

**ATSIA**

Milliken™





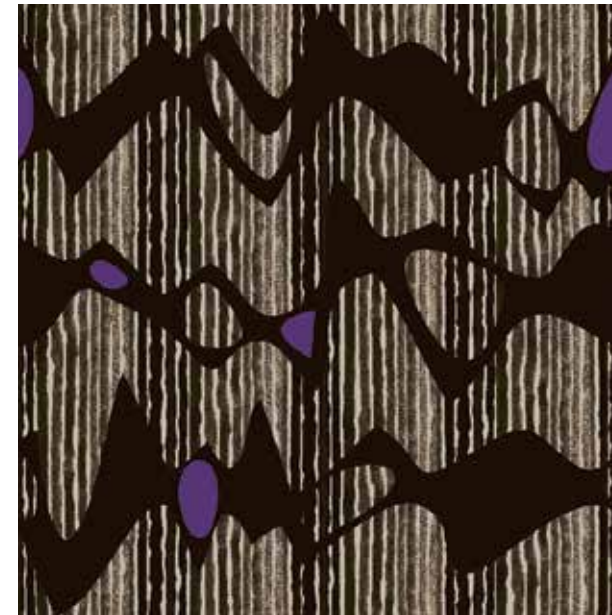
## **INSPIRED. INSPIRING.**

A voice calls from across the communal space. Sometimes the voice is solo. At others, it is a unified choreography that speaks to our humanity. The rhythmic qualities are almost drum—like in the expression of collective voice. A display of wholeness or separation, it is the dance of the rhythmic pattern that tells the story.





Single pattern repeat

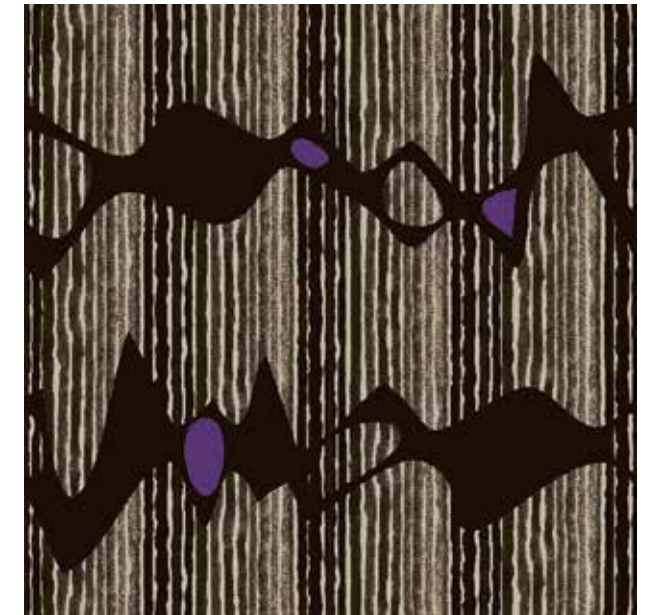


36" MODULAR TILE 2



Order #: 00393710  
Pattern repeat:  
36.00" W x 36.00" L

Single pattern repeat

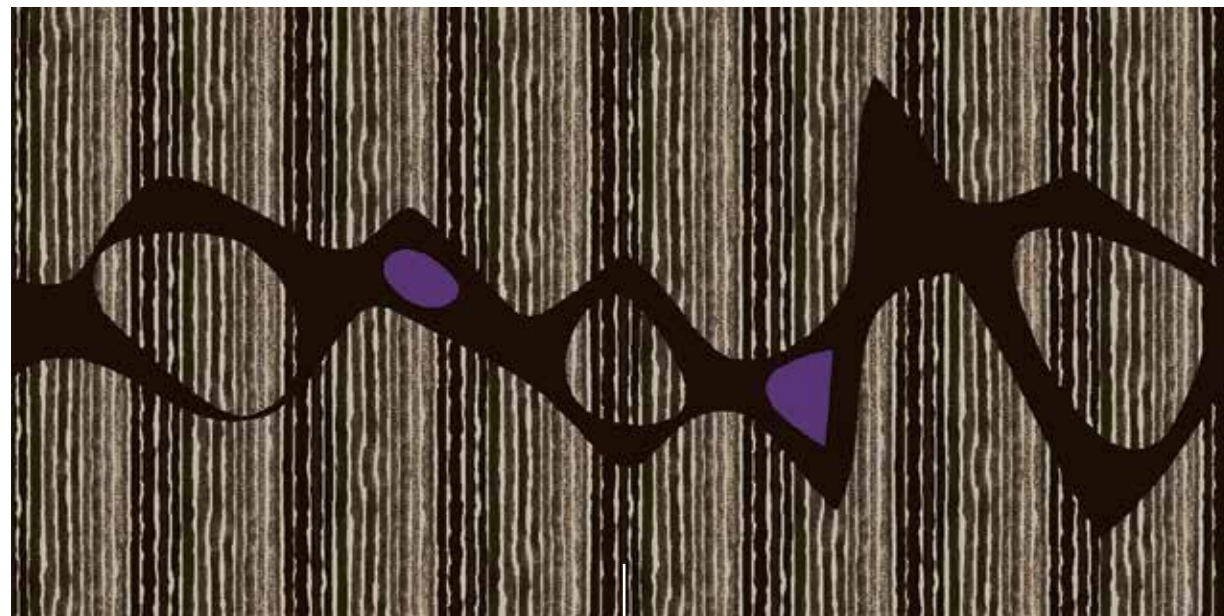


36" MODULAR TILE 3



Order #: 00393711  
Pattern repeat:  
36.00" W x 36.00" L

Single pattern repeat — two tiles shown

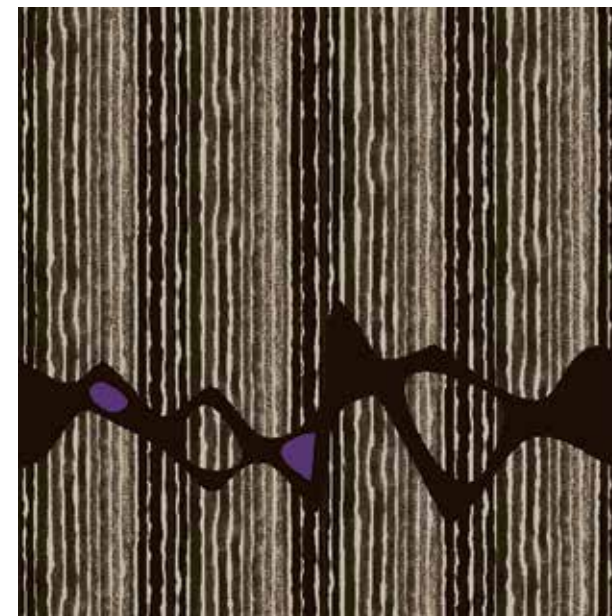


36" MODULAR TILE 1



Order #: 00393709  
Pattern repeat:  
72.00" W x 36.00" L

Single pattern repeat

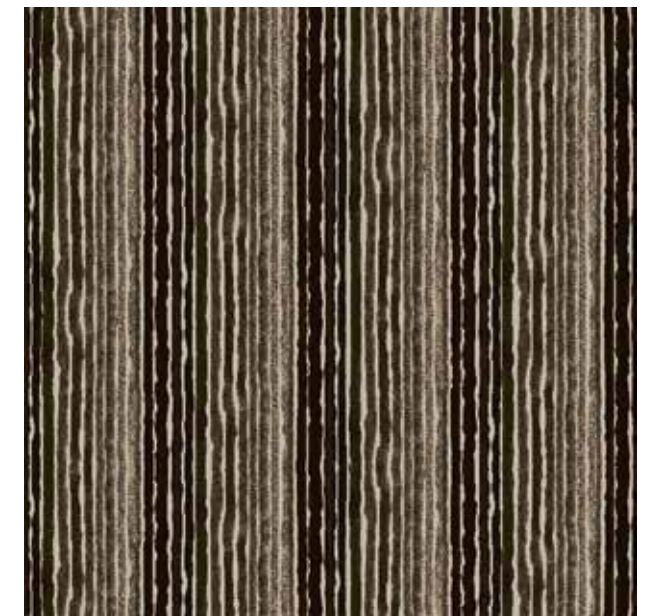


36" MODULAR TILE 4



Order #: 00393712  
Pattern repeat:  
36.00" W x 36.00" L

Single pattern repeat



36" MODULAR TILE 5



Order #: 00391726  
Pattern repeat:  
36.00" W x 36.00" L



# Abstract

**Kit of parts** — Milliken's modular carpet tile expertise provides a unique approach to scale, color spectrum and now, custom floor carpeting from a kit of standard design components. With our modular tiles, the flexibility of patterning and possibilities are increased, rather than a limitation. The Atsia Collection includes multiple components within each design group that can be combined in interesting ways to expand or change the scale of the pattern. In the example on this page, we begin the design with a single steady beat of Abstract 2 then make a crescendo with Abstract 1. All of this followed by a slow steady beat of Abstract 5. We then begin a reversed combination of Abstract 1, Abstract 2 and add-in a sampling of Abstract 3 to change the pace. It's custom made easy with standard components from the Atsia Collection by Milliken.



**36" MODULAR TILE 1**  
Order #: 00393709  
Pattern repeat:  
72.00" W x 36.00" L



**36" MODULAR TILE 2**  
Order #: 00393710  
Pattern repeat:  
36.00" W x 36.00" L



**36" MODULAR TILE 3**  
Order #: 00393711  
Pattern repeat:  
36.00" W x 36.00" L



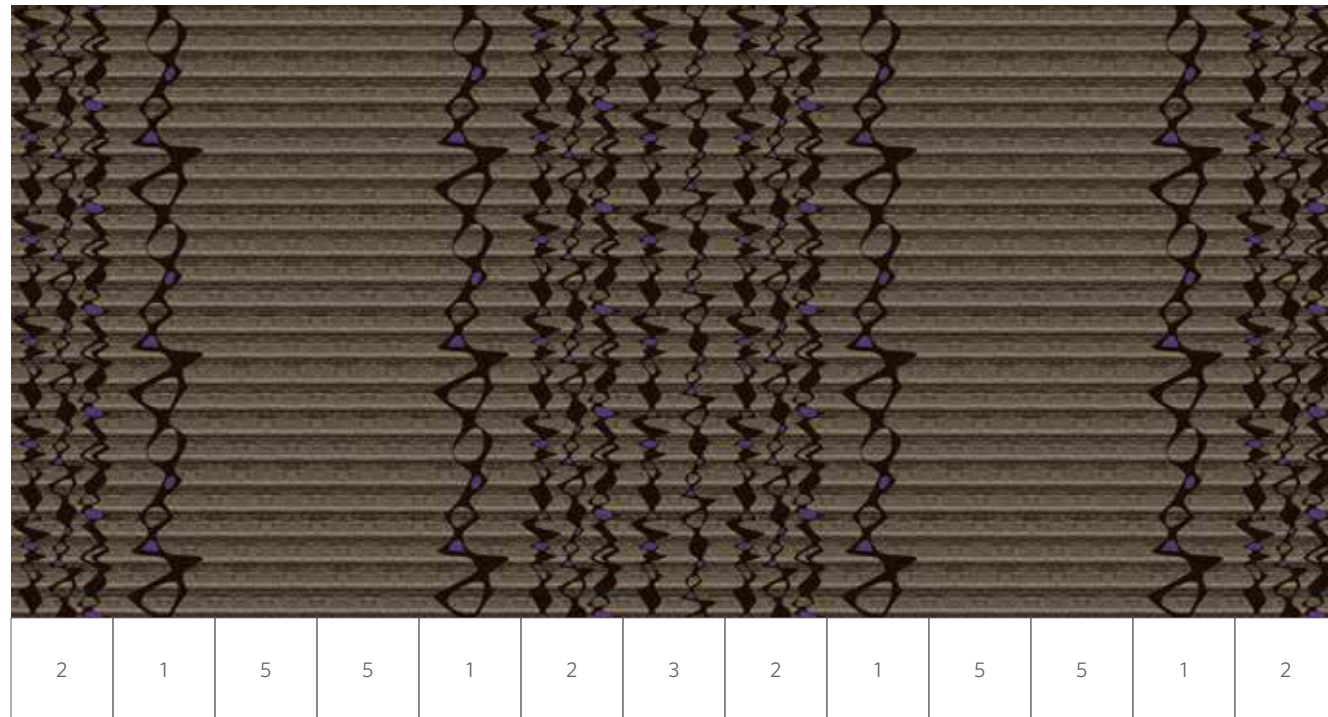
**36" MODULAR TILE 4**  
Order #: 00393712  
Pattern repeat:  
36.00" W x 36.00" L



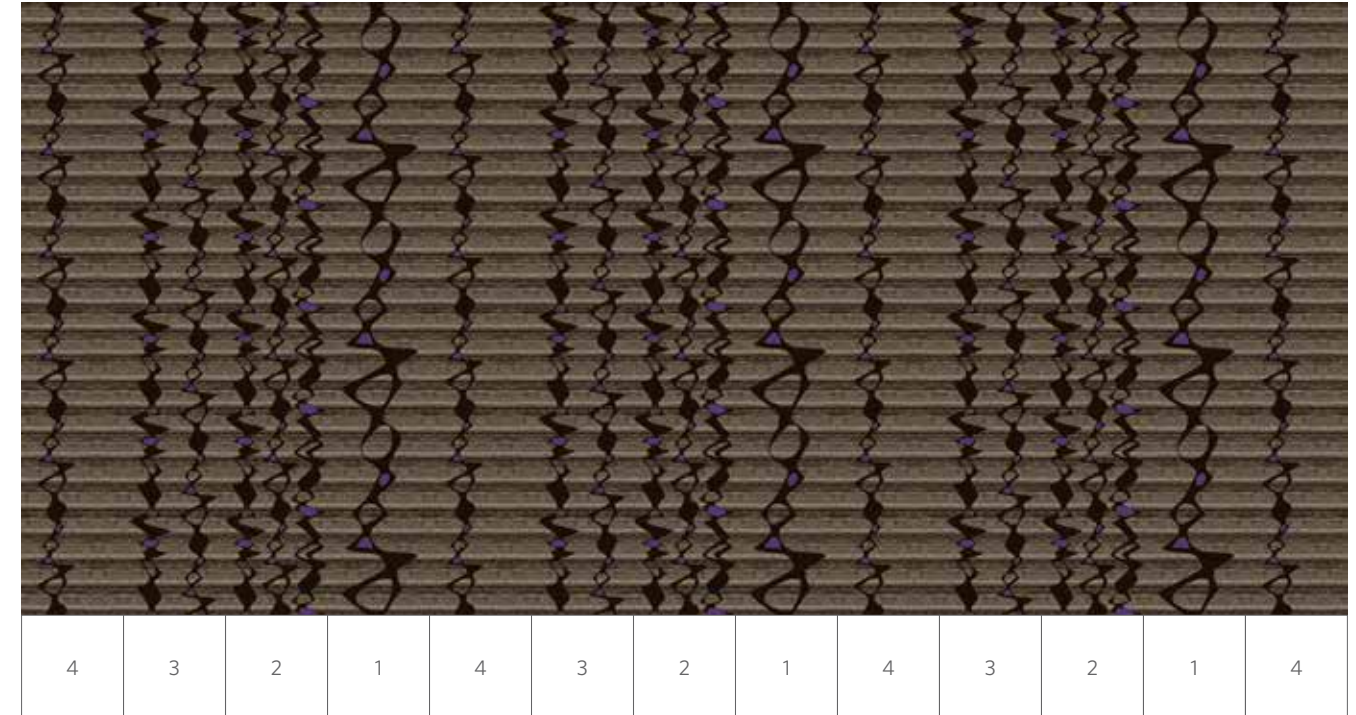
**36" MODULAR TILE 5**  
Order #: 00391726  
Pattern repeat:  
36.00" W x 36.00" L

*Designs have been rotated 90 degrees for reference to the layouts.*

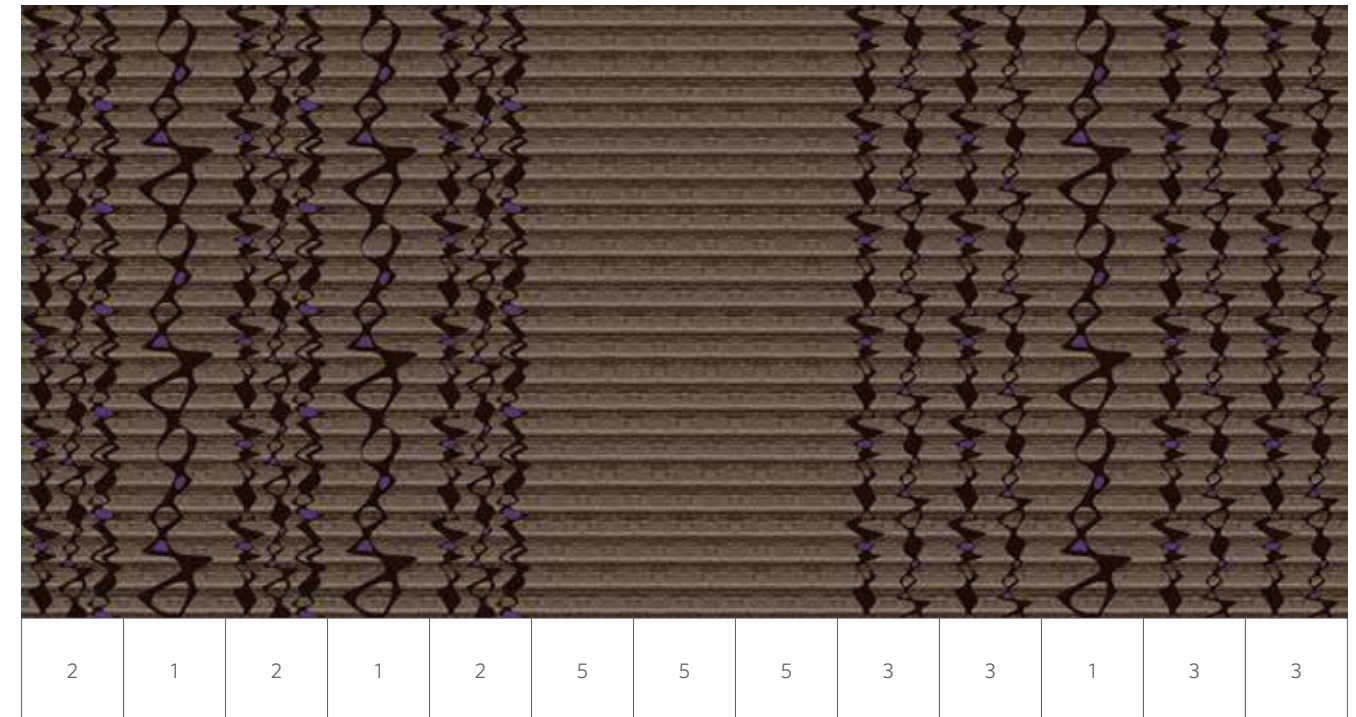
Layout 1



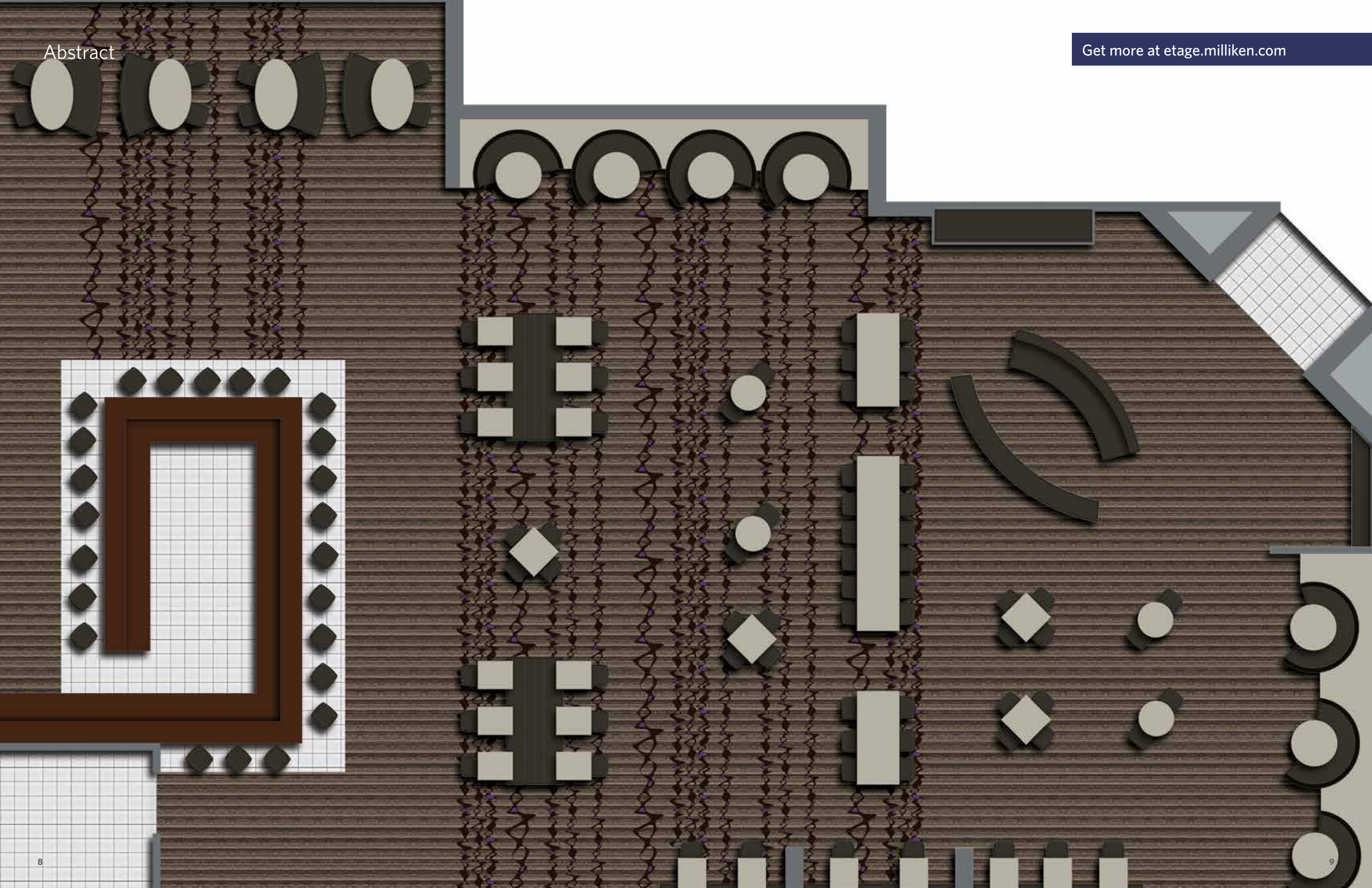
Layout 2



Layout 3

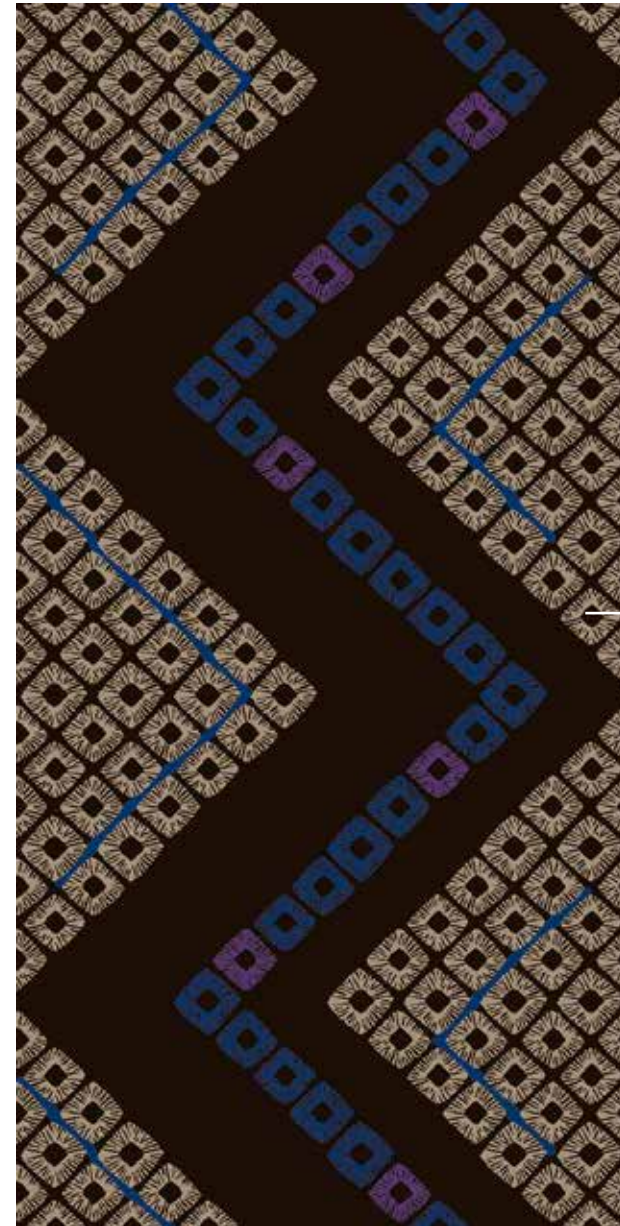






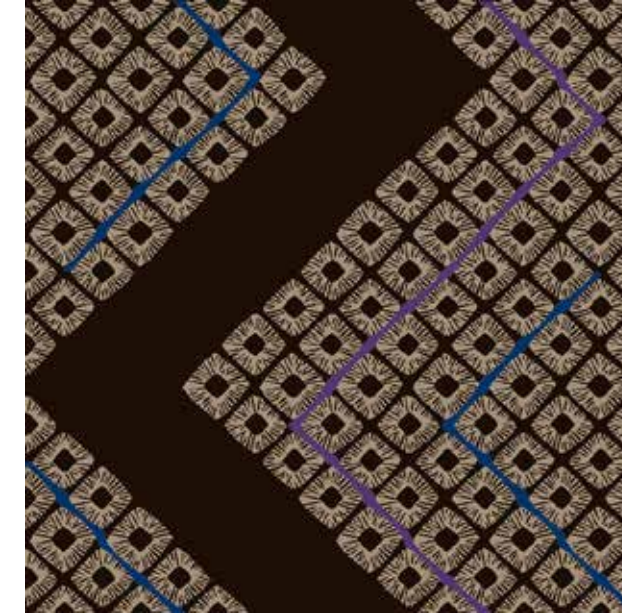


Single pattern repeat — two tiles shown



**36" MODULAR TILE 1**  
 Order #: 00393719  
 Pattern repeat:  
 36.00" W x 72.00" L

Single pattern repeat



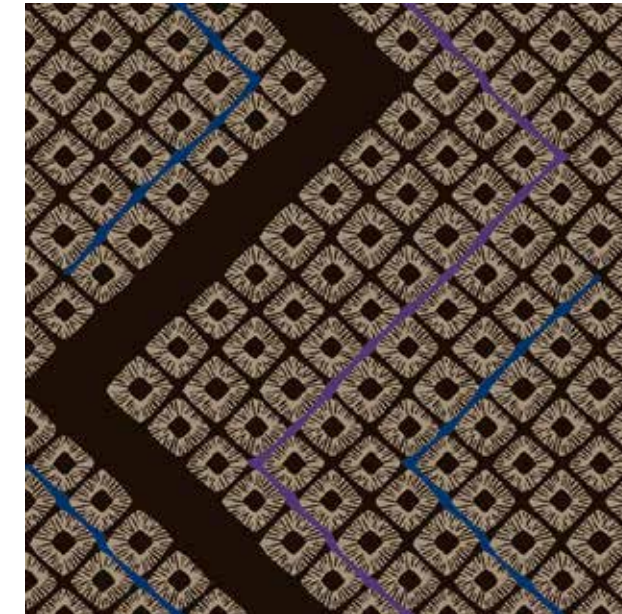
**36" MODULAR TILE 2**  
 Order #: 00393720  
 Pattern repeat:  
 36.00" W x 36.00" L

Single pattern repeat



**36" MODULAR TILE 3**  
 Order #: 00386582  
 Pattern repeat:  
 36.00" W x 36.00" L

Single pattern repeat



**36" MODULAR TILE 4**  
 Order #: 00386583  
 Pattern repeat:  
 36.00" W x 36.00" L

Single pattern repeat

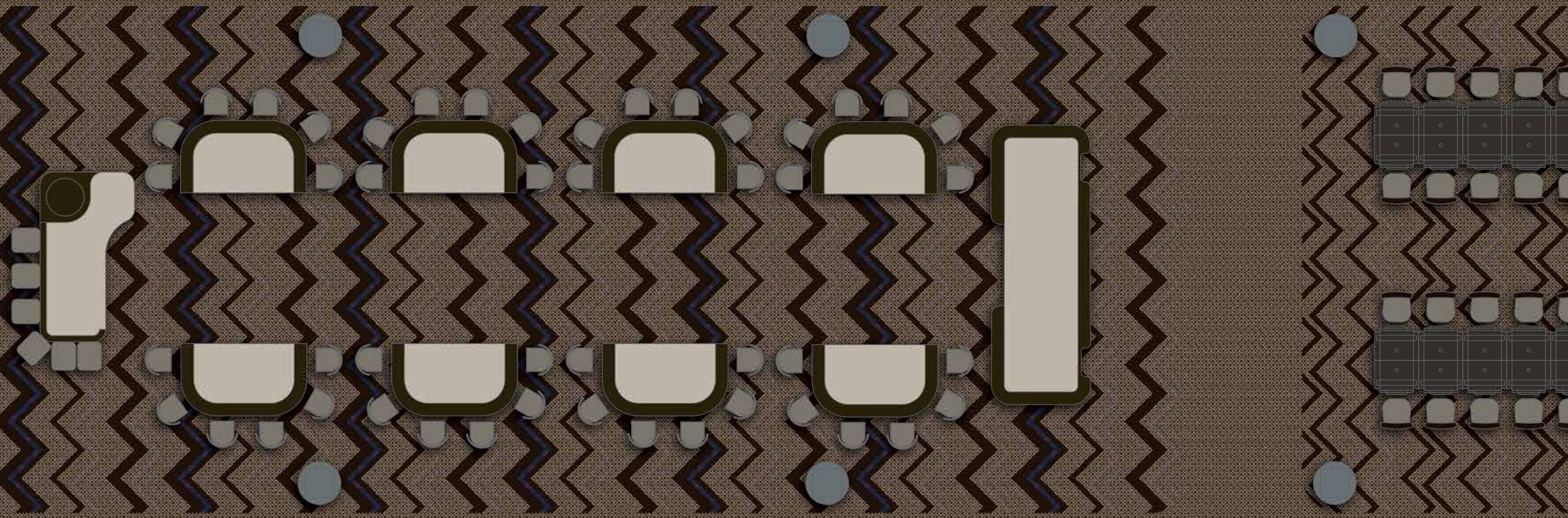
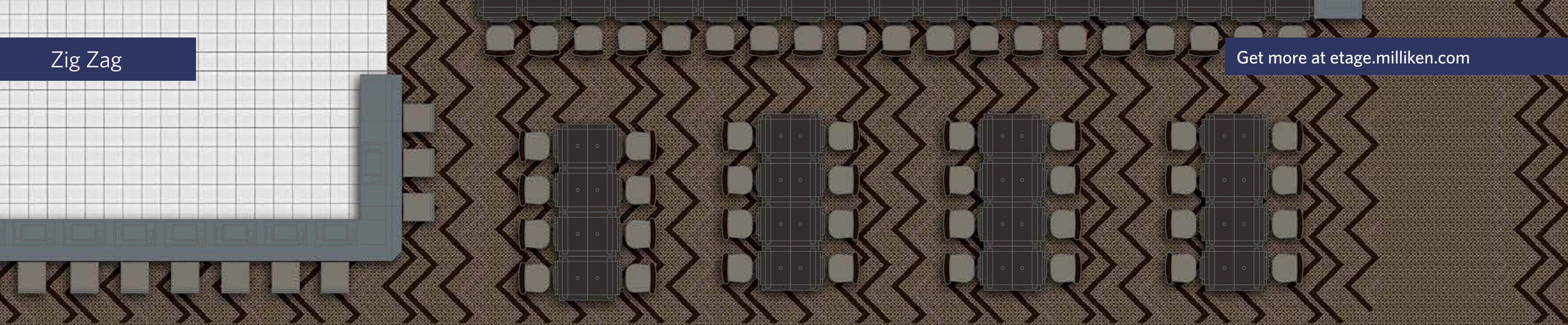


**36" MODULAR TILE 5**  
 Order #: 00391778  
 Pattern repeat:  
 36.00" W x 36.00" L





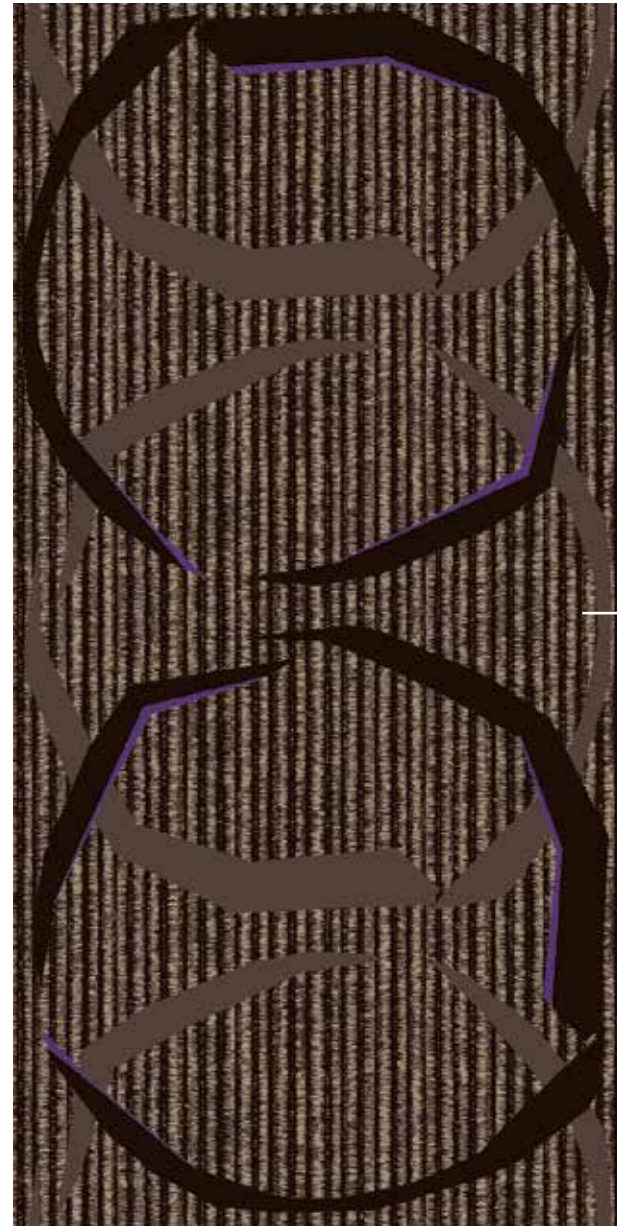








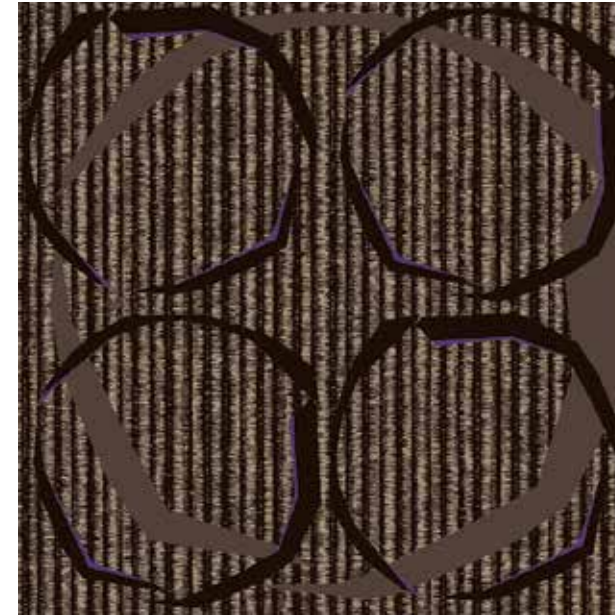
Single pattern repeat — two tiles shown



**36" MODULAR TILE 1**  
2 6 7 10

Order #: 00393323  
 Pattern repeat:  
 36.00" W x 72.00" L

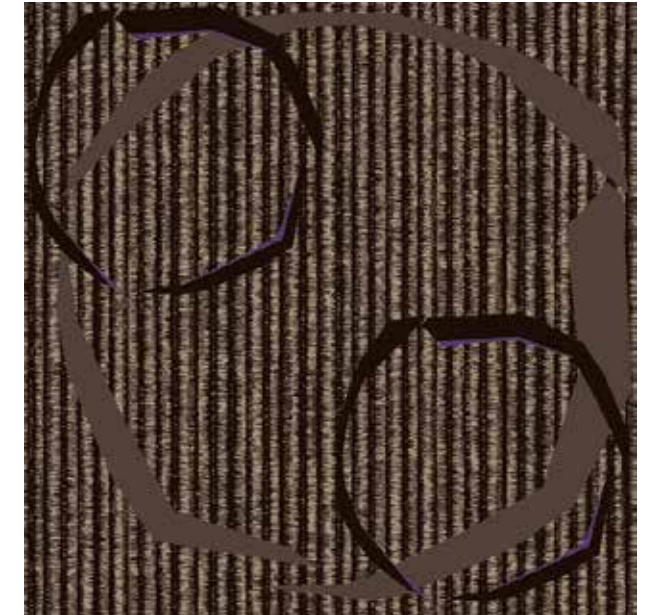
Single pattern repeat



**36" MODULAR TILE 2**  
2 6 7 10

Order #: 00393322  
 Pattern repeat:  
 36.00"W x 36.00"L

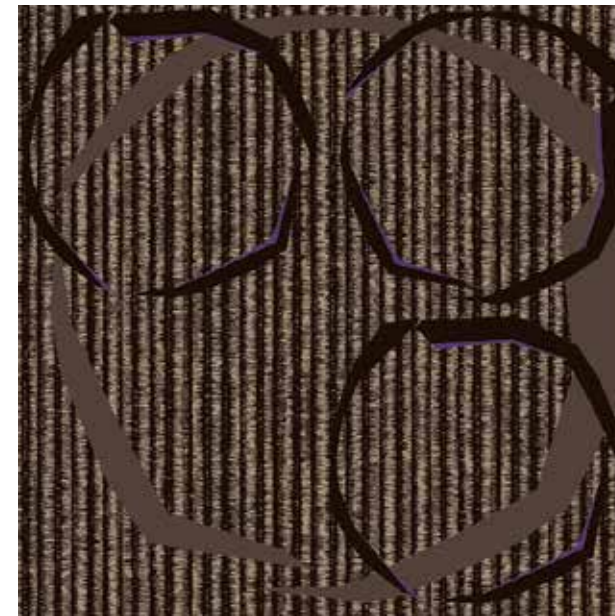
Single pattern repeat



**36" MODULAR TILE 3**  
2 6 7 10

Order #: 00393319  
 Pattern repeat:  
 36.00"W x 36.00"L

Single pattern repeat



**36" MODULAR TILE 4**  
2 6 7 10

Order #: 00393321  
 Pattern repeat:  
 36.00"W x 36.00"L

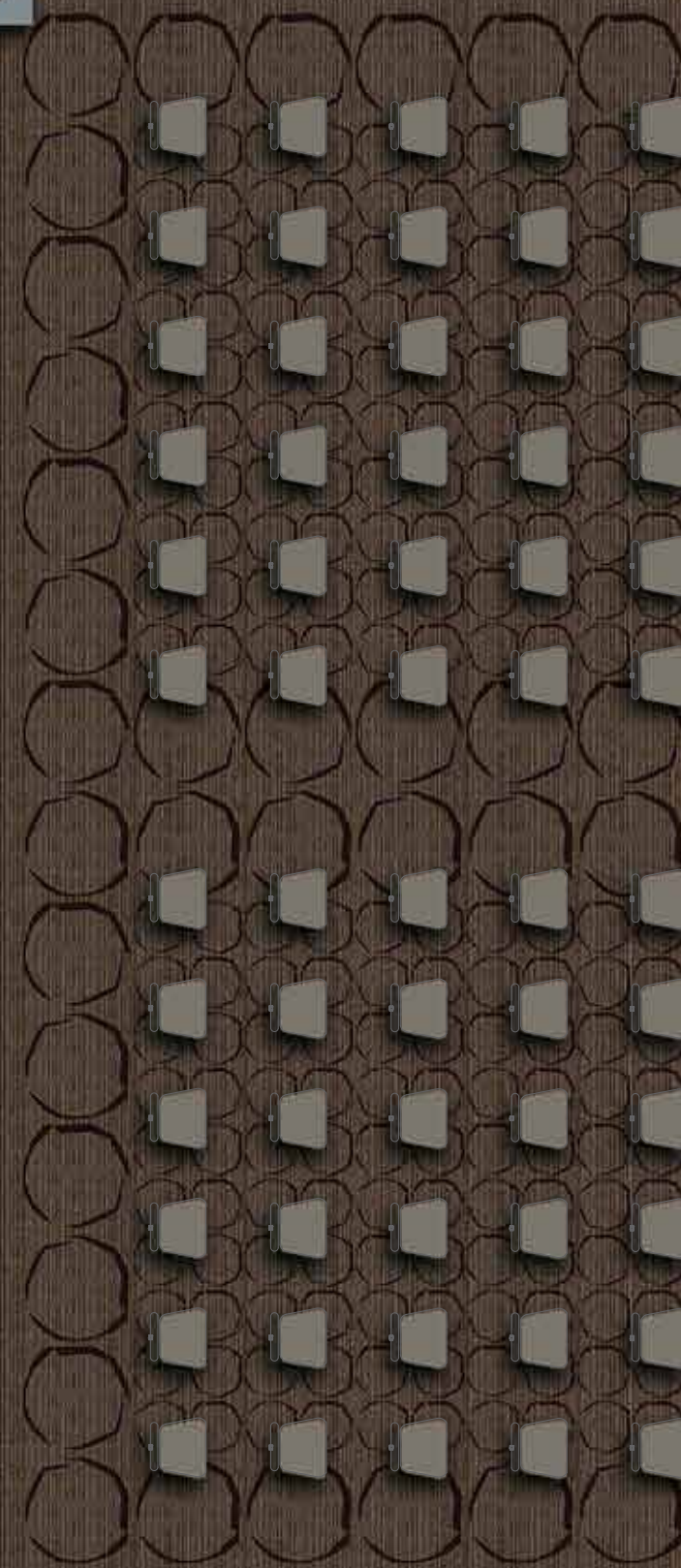
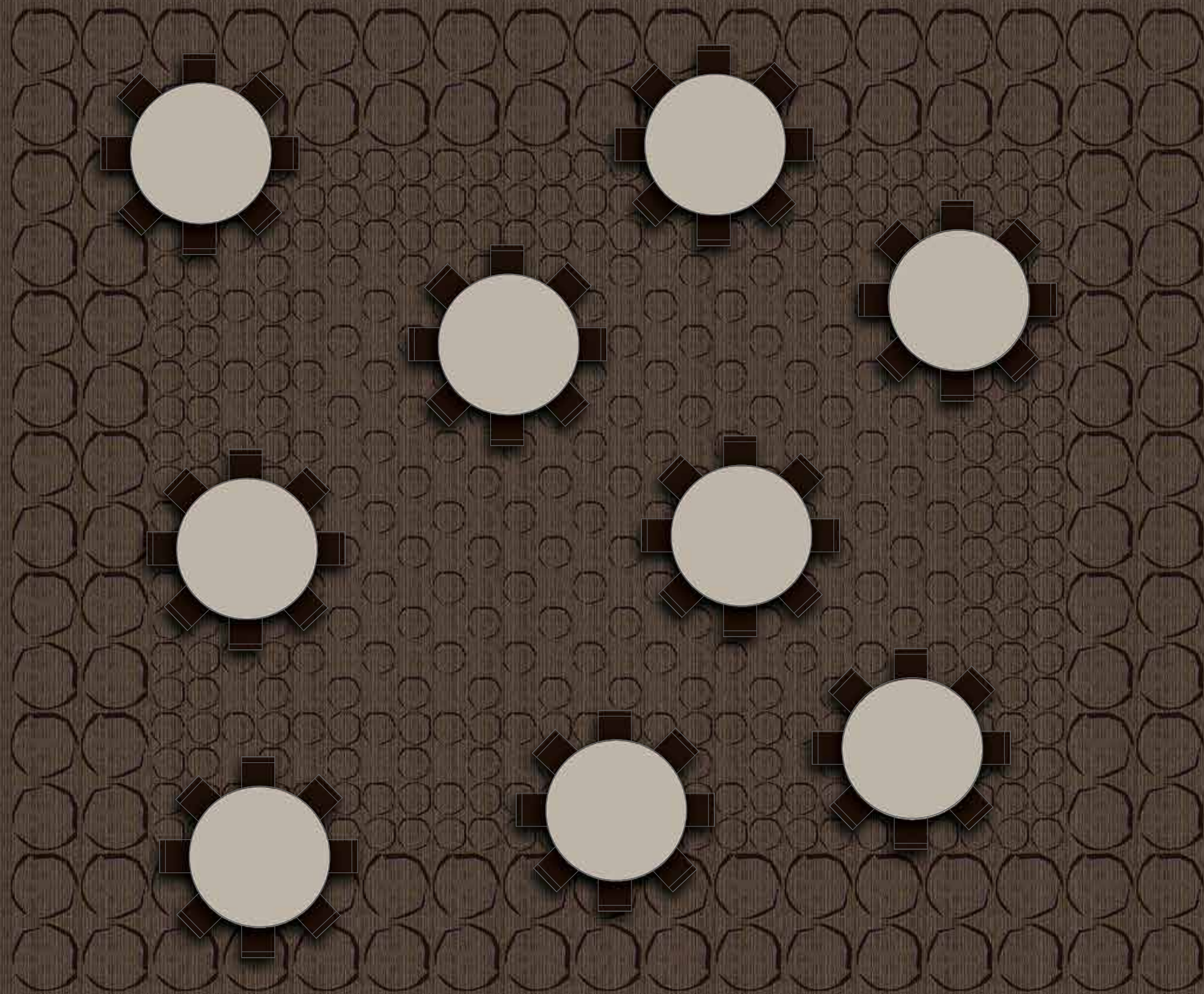
Single pattern repeat



**36" MODULAR TILE 5**  
2 7 10

Order #: 00392000  
 Pattern repeat:  
 36.00"W x 36.00"L







# Coordinates

Get more at [etage.milliken.com](http://etage.milliken.com)

Single pattern repeat



36" MODULAR TILE 1



Order #: 00386578  
Pattern repeat:  
36.00" W x 36.00" L

Single pattern repeat

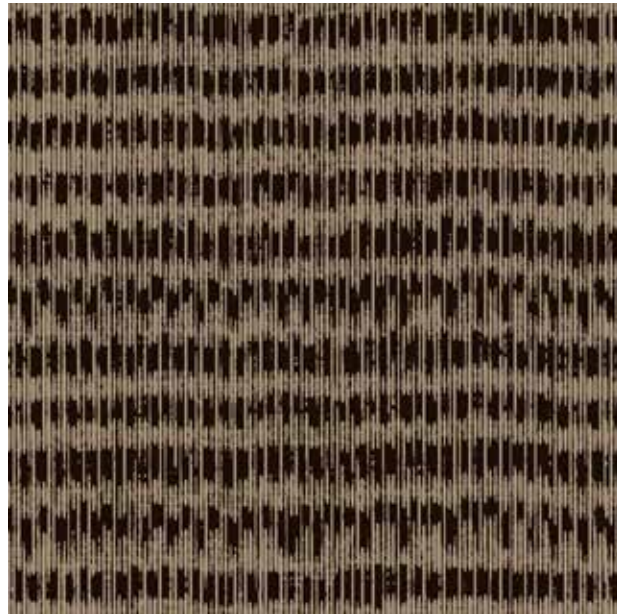


36" MODULAR TILE 2



Order #: 00386579  
Pattern repeat:  
36.00" W x 36.00" L

Single tile shown

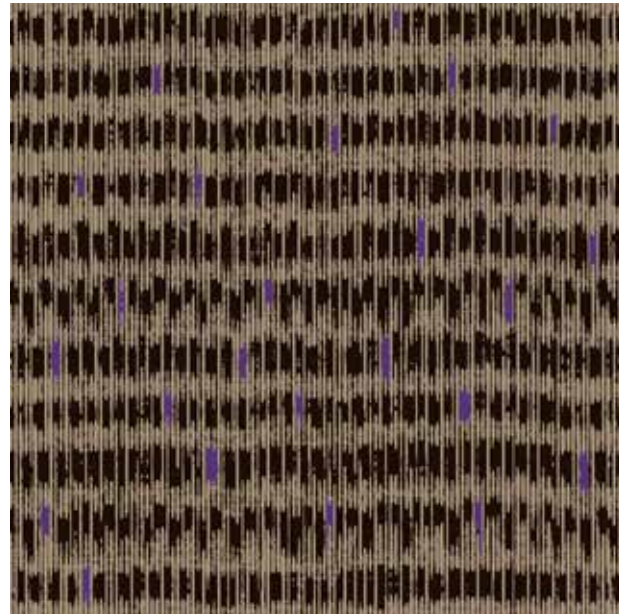


36" MODULAR TILE 3



Order #: 00394379  
Pattern repeat:  
Random

Single tile shown



36" MODULAR TILE 4



Order #: 00396966  
Pattern repeat:  
Random

Single pattern repeat



36" MODULAR TILE 5



Order #: 00391727  
Pattern repeat:  
36.00" W x 36.00" L

Single pattern repeat



36" MODULAR TILE 6



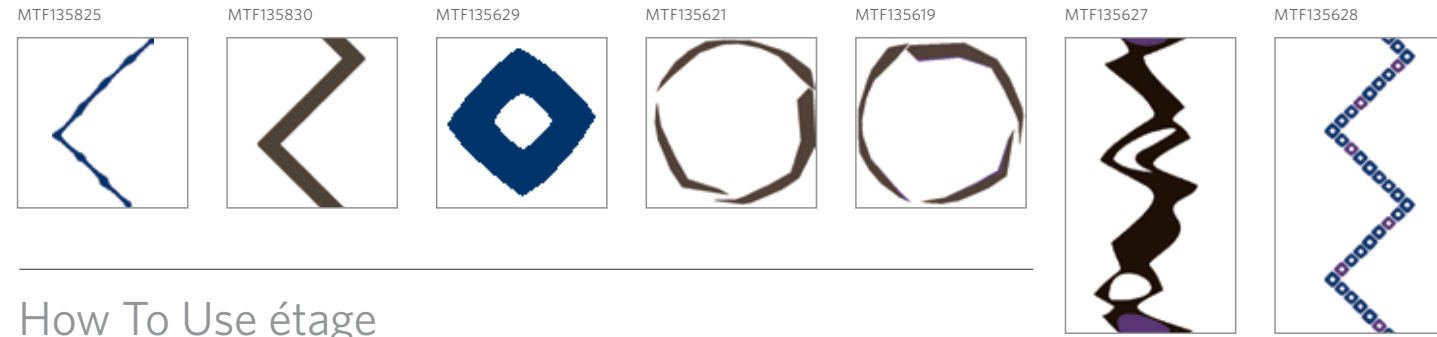
Order #: 00392000  
Pattern repeat:  
36.00" W x 36.00" L





## Motifs

Single design elements, no repeat, on a transparent background



## How To Use étage

1

Select a design as shown in this brochure, or use étage technology to customize.

Add and subtract design layers and motifs to create your own look. Remember that you must always use at least two layers, one of which must be the background.

2

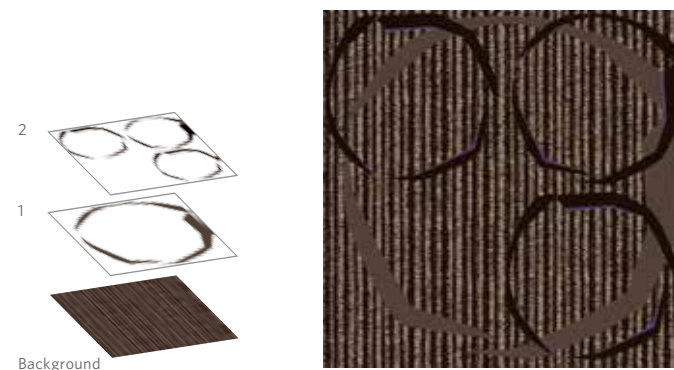
Designs in this brochure use a set of colors intended for this particular collection.

Specific colors used in each design are indicated below each pattern image as a swatch of the color with a number inside it. Refer to the colorway diagram on page 25 to find a corresponding color code. These colors are part of the Milliken Pure Color system.

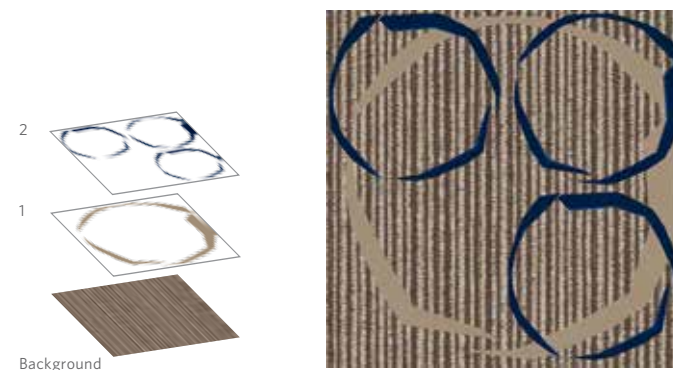
3

Choose a carpet construction that suits your installation.

Contact your Milliken representative to discuss the carpet construction that's best for you.



Designs shown in the brochure are ready to use, but you can also select them as a starting point for customization using étage technology.



No change is too great or too small (like simply choosing different colors from a pre-designed rug/runner).

## Colorway

The Atsia collection has eleven colors from over 1360 options in our Pure Color system.

Get more at [etage.milliken.com](http://etage.milliken.com)

pure|color

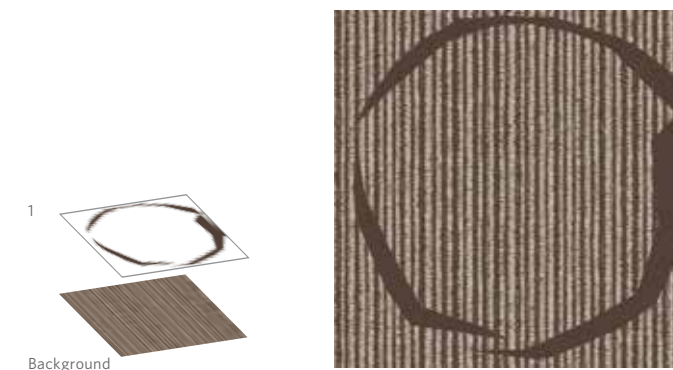
Based on the Natural Color System (NCS), the Pure Color Box lets designers play with the entire color wheel. With over 1360 defined colors and endless options in-between, PureColor makes custom easy.



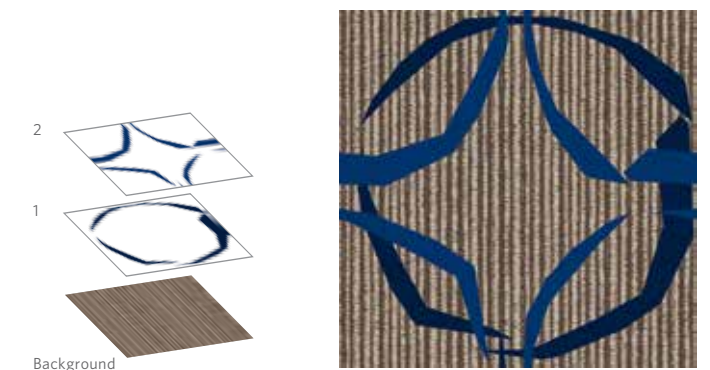
When it's time to break away from traditional hospitality looks, engage in étage technology.

This all-new process builds a complex pattern, layer by layer. Creating a fully custom look is as simple as choosing and combining layers — layers of organic design elements that defy traditional ideas of symmetry, boxes and borders. Étage technology brings a kind of freedom of design never before known in the hospitality industry.

Each collection includes small-, medium- and large-scale elements for ultimate flexibility in defining rugs, runners and open areas. Combine broadloom and modular and get the best of both. Freedom. Control. It's all here, waiting for an artist's touch. Exclusively from Milliken.



Layers can be added, subtracted, re-ordered, rotated, re-sized and re-colored in any combination to suit your needs.

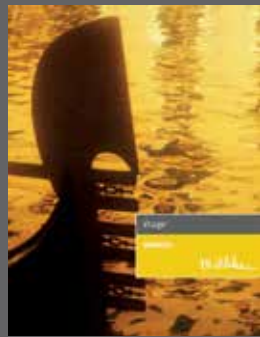
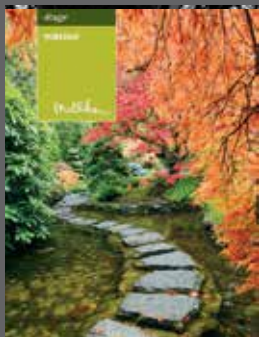
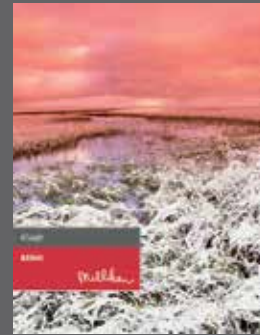
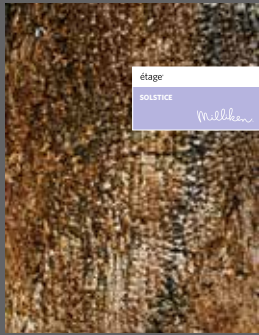


Best of all, repeating layers and motifs from all étage collections can be used together to create a myriad of designs.



# OTHER DESIGNS IN ÉTAGE

Have you seen all of our patterns? Étage allows you to use design elements from any design collection. Visit us online today and experience all that étage has to offer.



Gold of Platinum Certified  
NSF/ANSI 140 - 2007a  
International Green Association



**Growing greener for over 100 years.**  
Visit [milliken.com](http://milliken.com) for more information.

800.334.7749 (USA and Canada) | [milliken.com](http://milliken.com)  
Design © Milliken & Company | Made in the USA

Cover image: Multicolored sand in the boxes ©2013 Thinkstock