

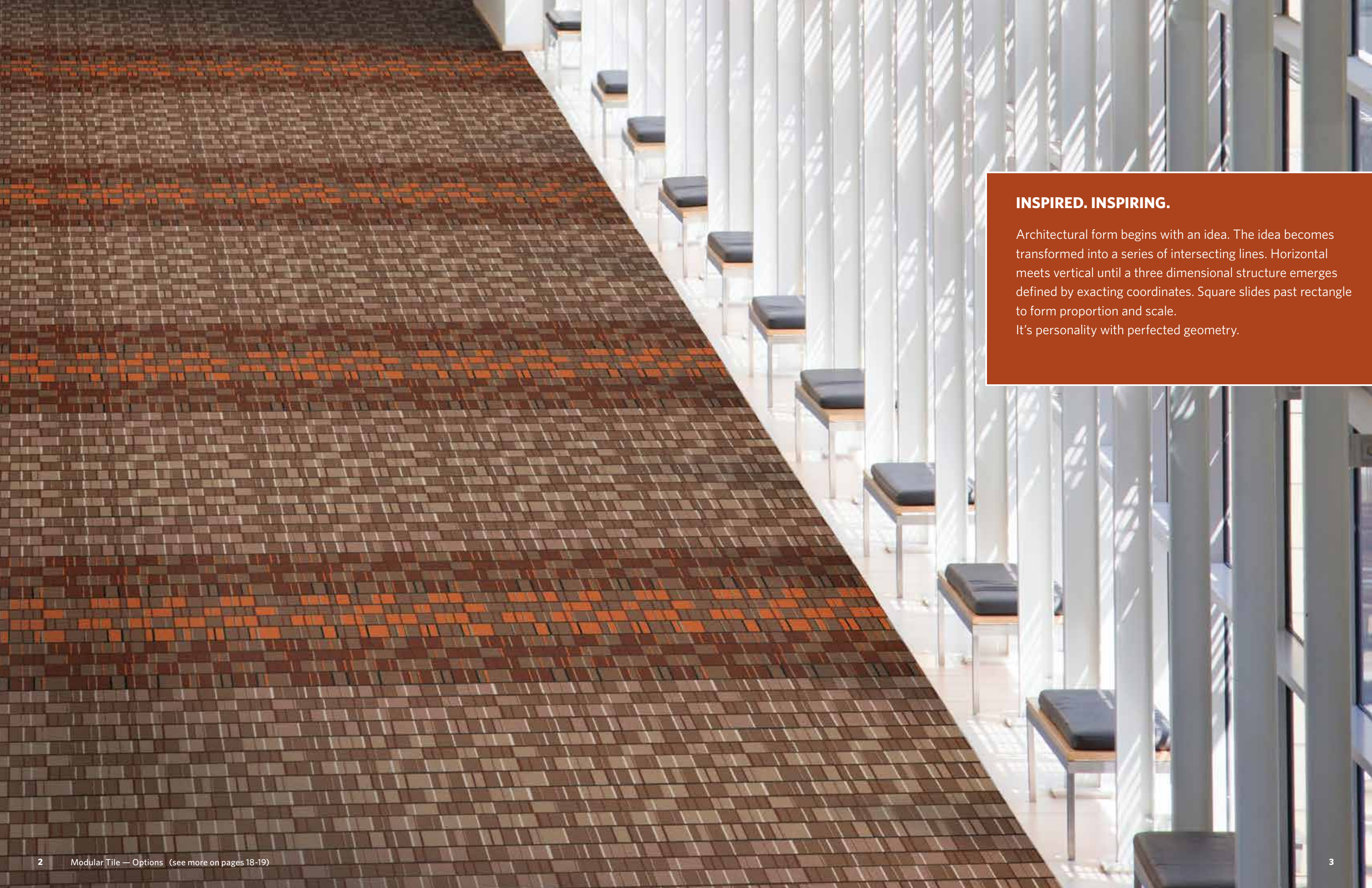
A low-angle, upward-looking view of a skyscraper's exterior, rendered as a complex, dense wireframe of thin grey lines. The lines form a grid-like structure that recedes into the distance, creating a sense of height and architectural detail. The background is a plain, light grey color.

étage®

**CARTESIAN**

*Milliken*™



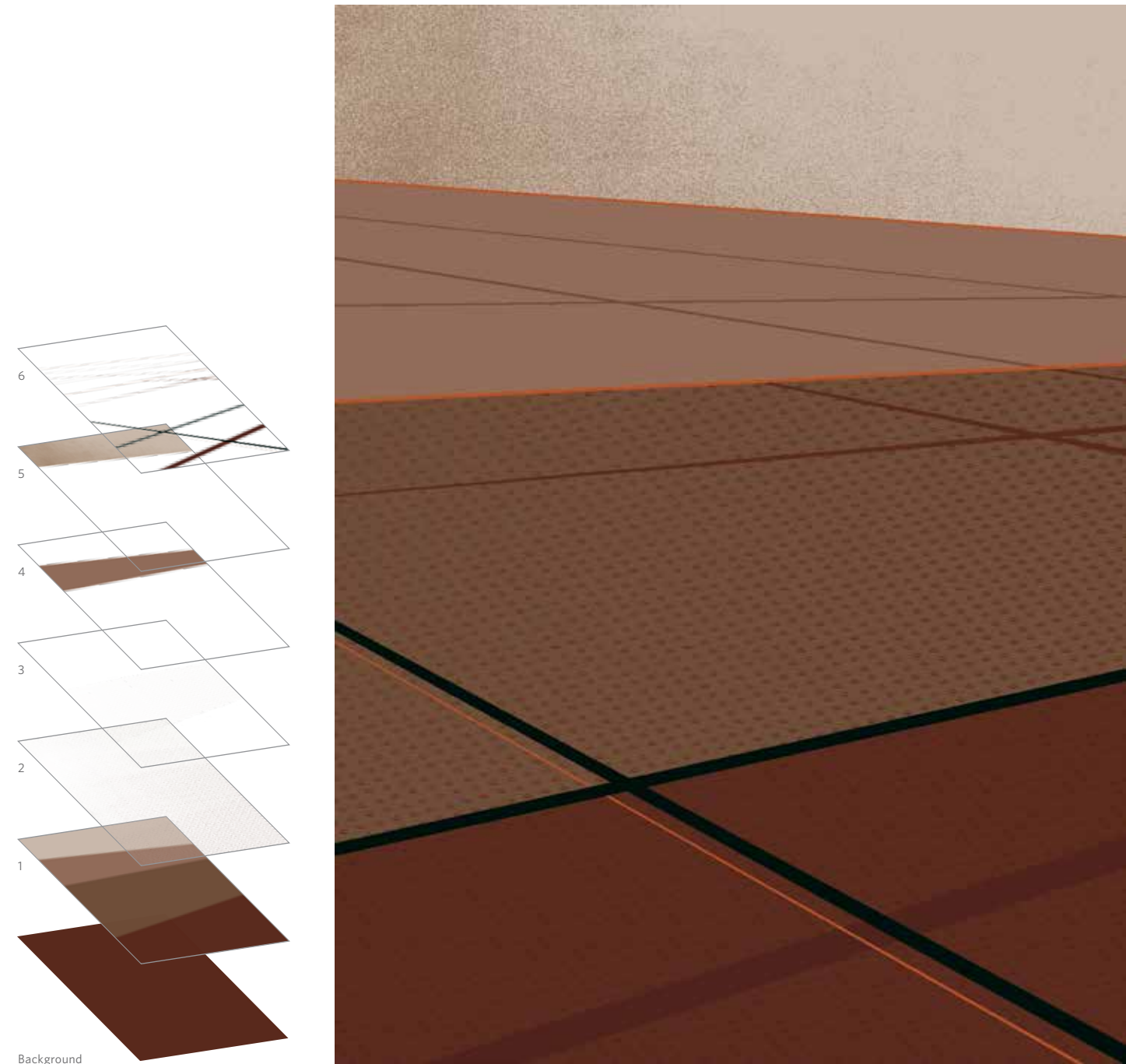


## **INSPIRED. INSPIRING.**

Architectural form begins with an idea. The idea becomes transformed into a series of intersecting lines. Horizontal meets vertical until a three dimensional structure emerges defined by exacting coordinates. Square slides past rectangle to form proportion and scale.

It's personality with perfected geometry.





**BROADLOOM RUG A**

1	2	3	4
6	7	8	9

Order #: 00355479  
 Pattern repeat:  
 81.00" W x 108.00" L

Single pattern repeat

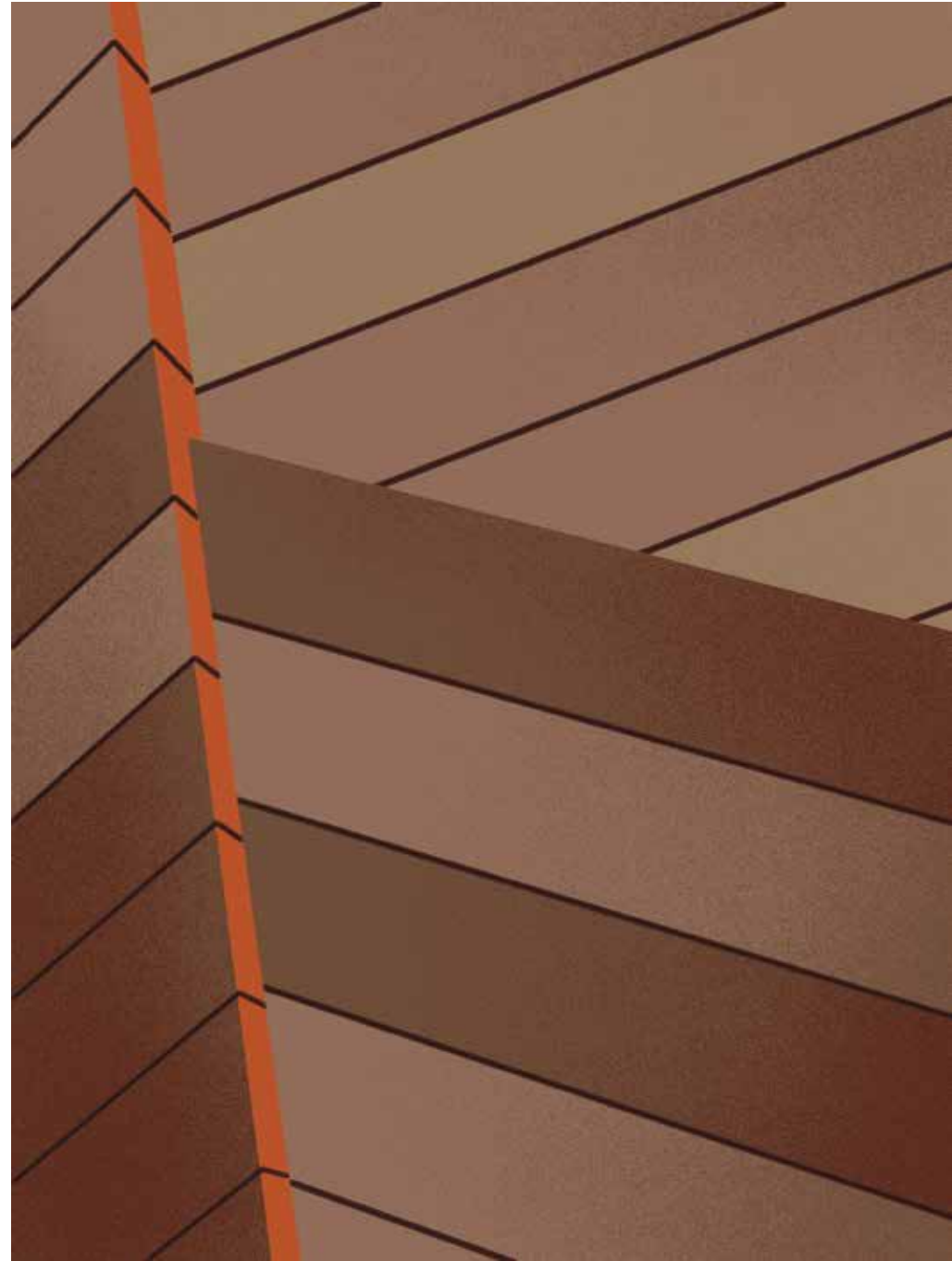
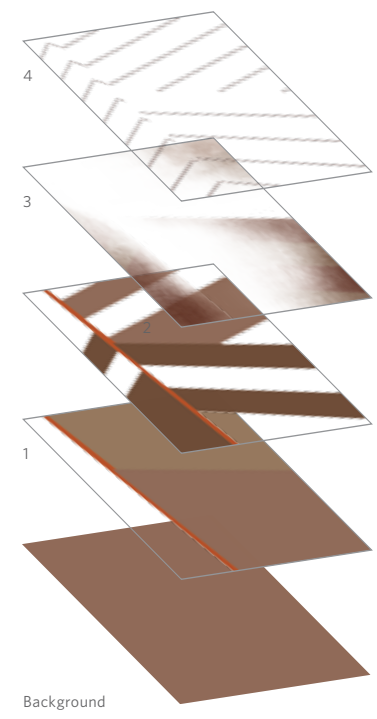


**BROADLOOM RUG B**

1	2	3	4
6	7	8	

Order #: 00346652  
 Pattern repeat:  
 81.00" W x 108.00" L

Single pattern repeat



**BROADLOOM RUG C**

1	2	3	4
6	7	8	

Order #: 00346665  
 Pattern repeat:  
 81.00" W x 108.00" L

*Single pattern repeat*

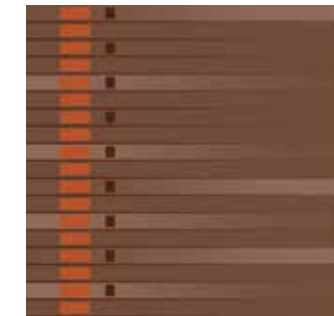
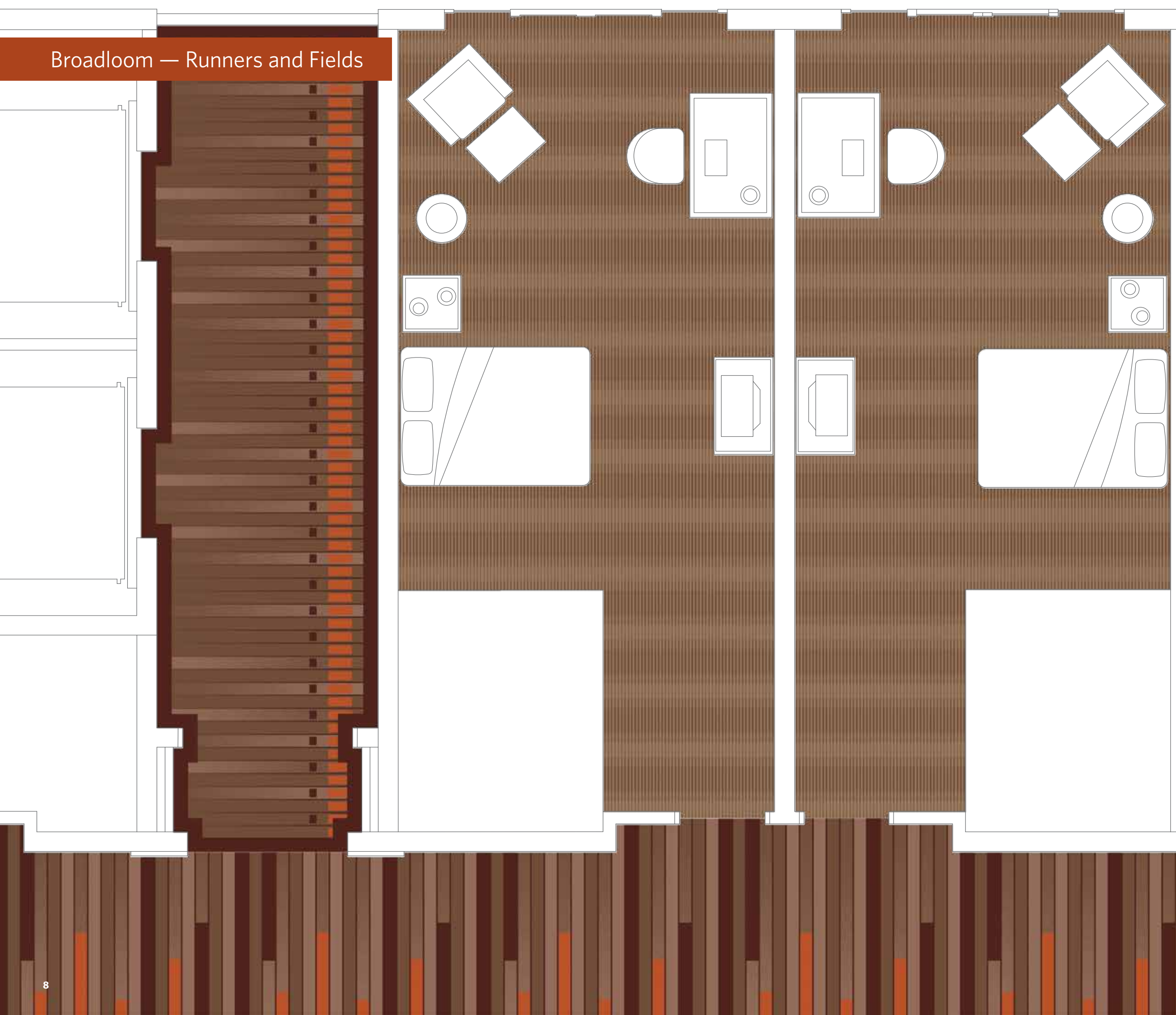


**BROADLOOM RUG C**

1	2	3	4
6	7	8	

Order #: 00346665  
 Pattern repeat:  
 81.00" W x 108.00" L



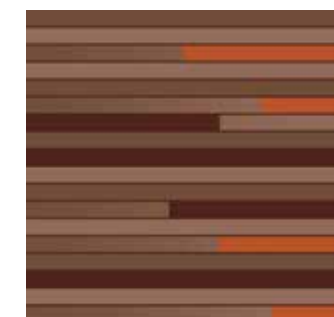


2 T122 SOLID

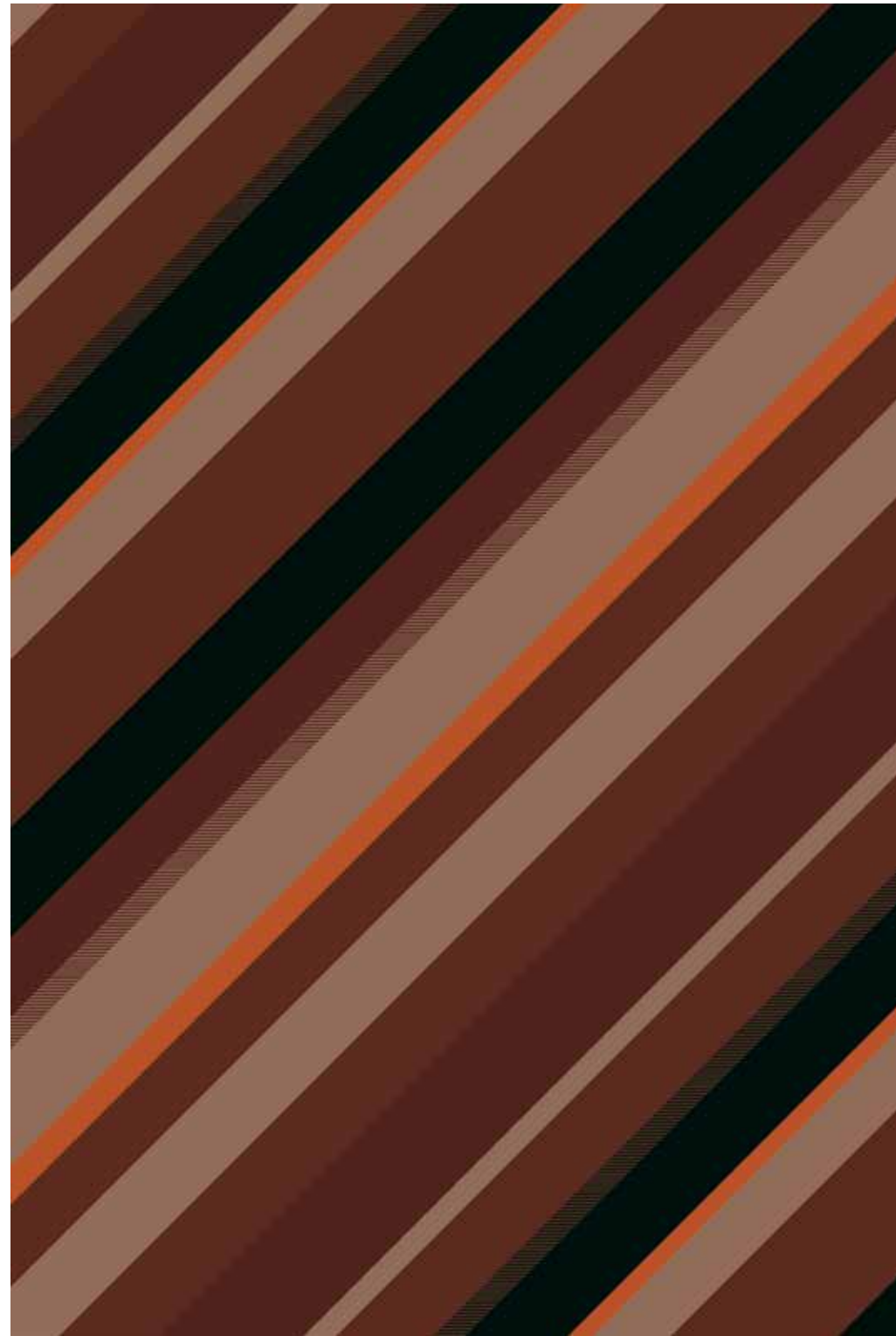
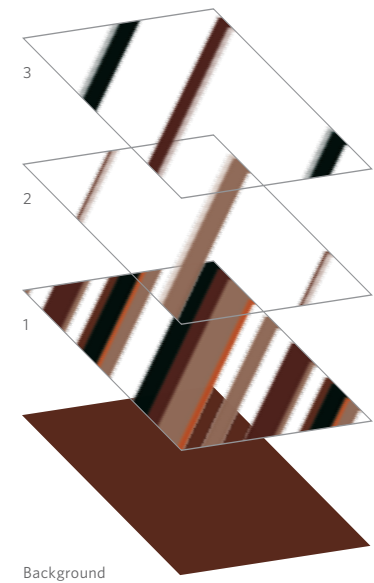
BROADLOOM RUNNER 3  
Order #: 00352219  
Pattern repeat:  
81.00" W x 81.00" L



BROADLOOM FIELD E — LIGHT  
Order #: 00352871  
Pattern repeat:  
20.25" W x 2.25" L



BROADLOOM RUNNER 2  
Order #: 00353912  
Pattern repeat:  
81.00" W x 81.00" L

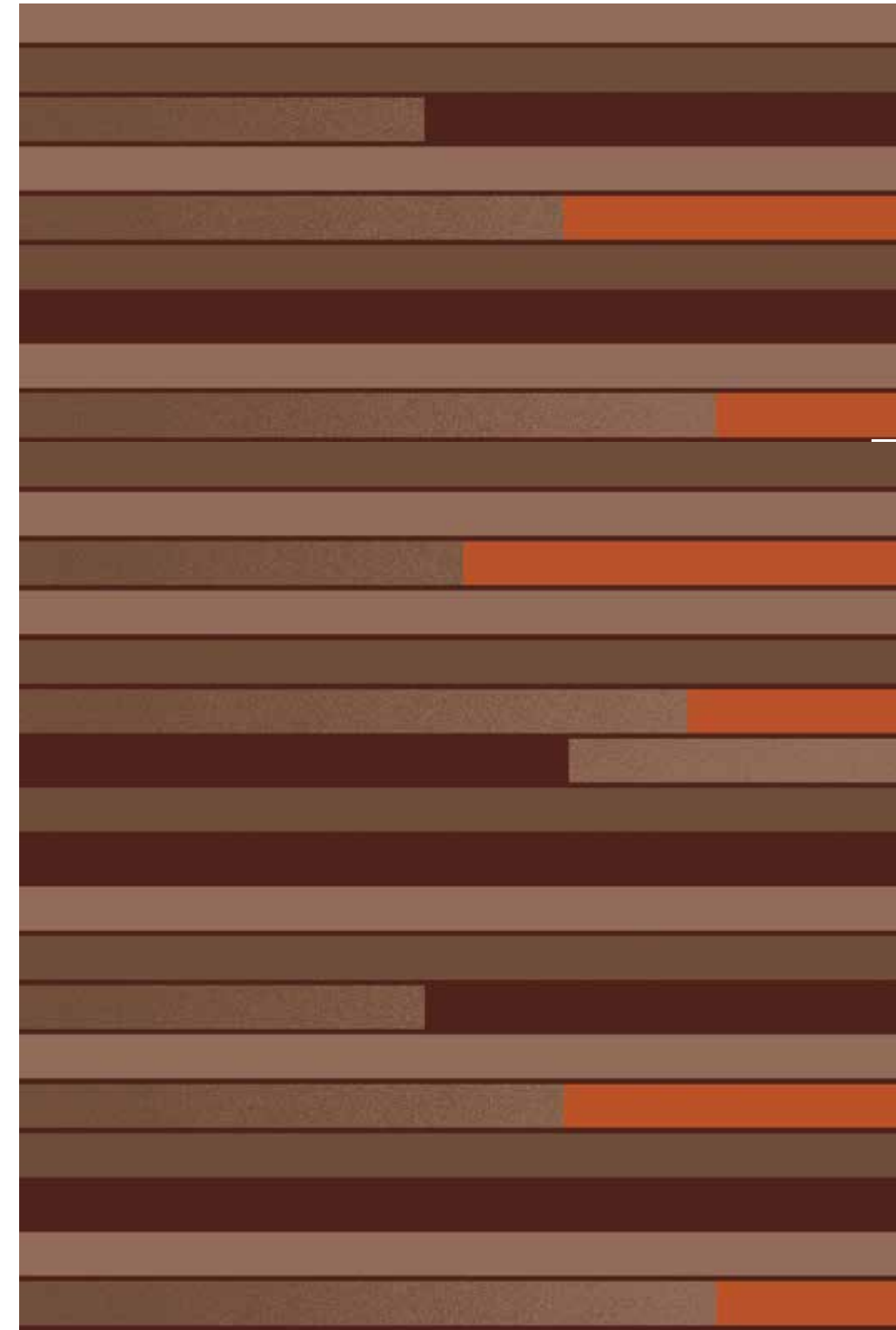


**BROADLOOM RUNNER 1**



Order #: 00352226  
 Pattern repeat:  
 81.00" W x 121.50" L

Single pattern repeat

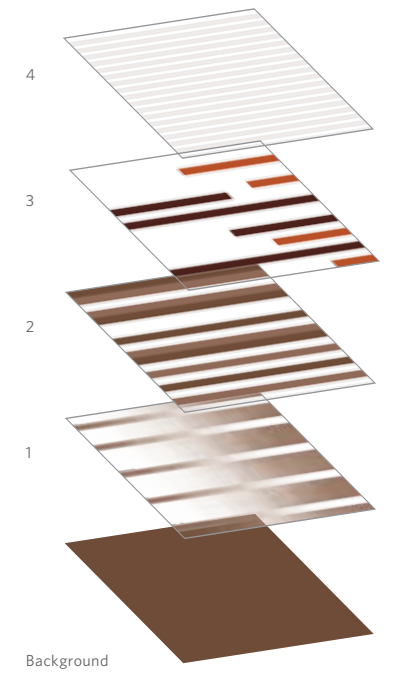


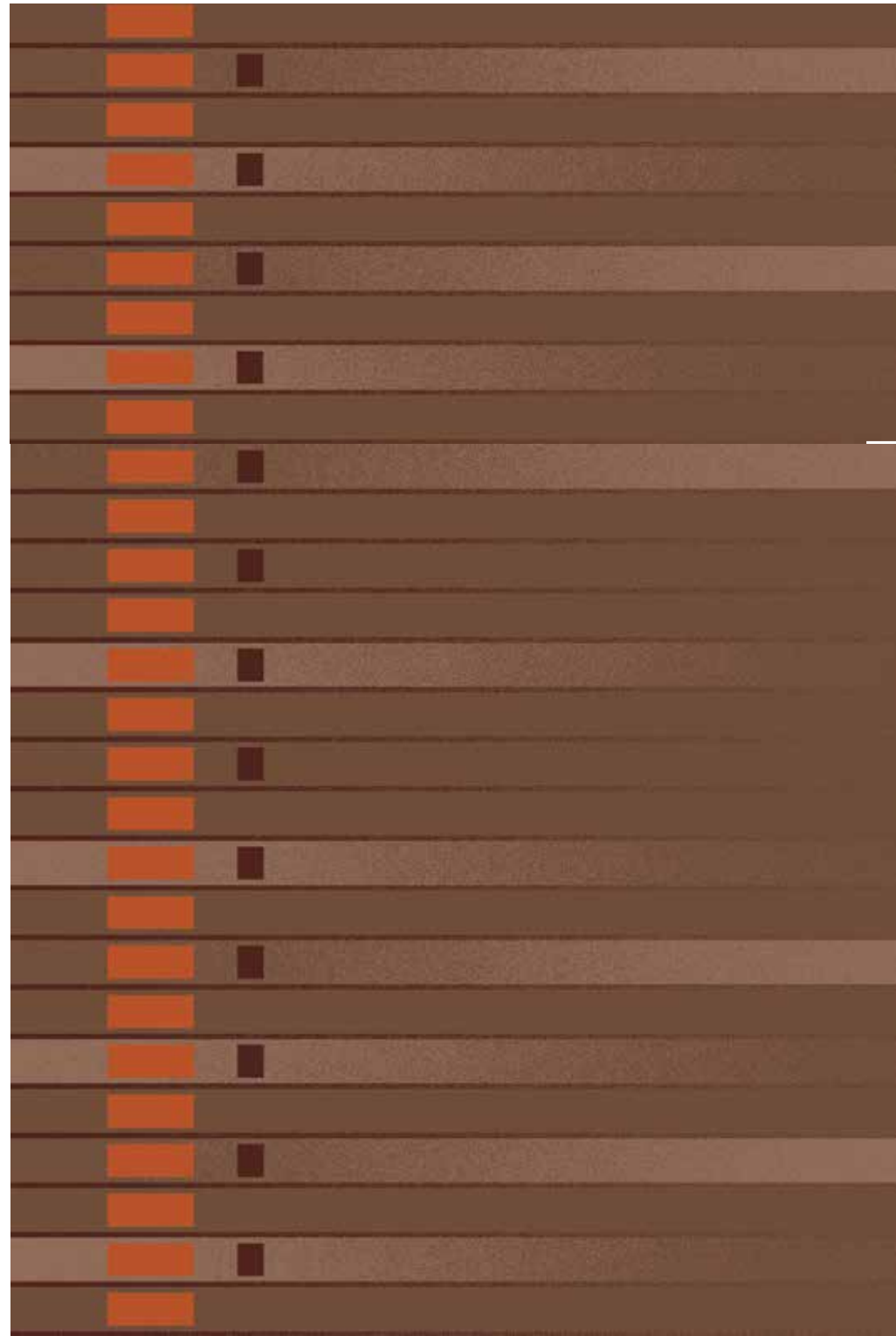
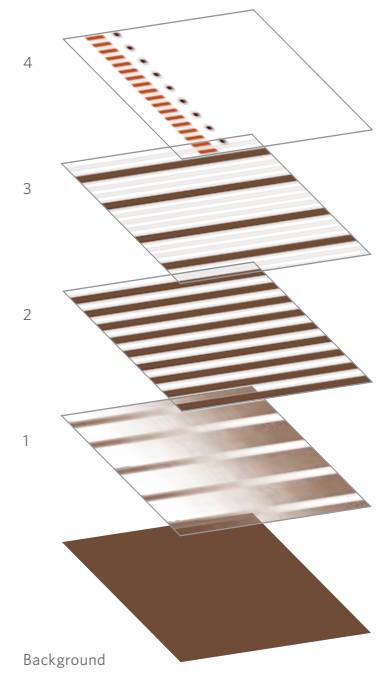
**BROADLOOM RUNNER 2**



Order #: 00353912  
 Pattern repeat:  
 81.00" W x 81.00" L

81.00" W x 121.50" L shown



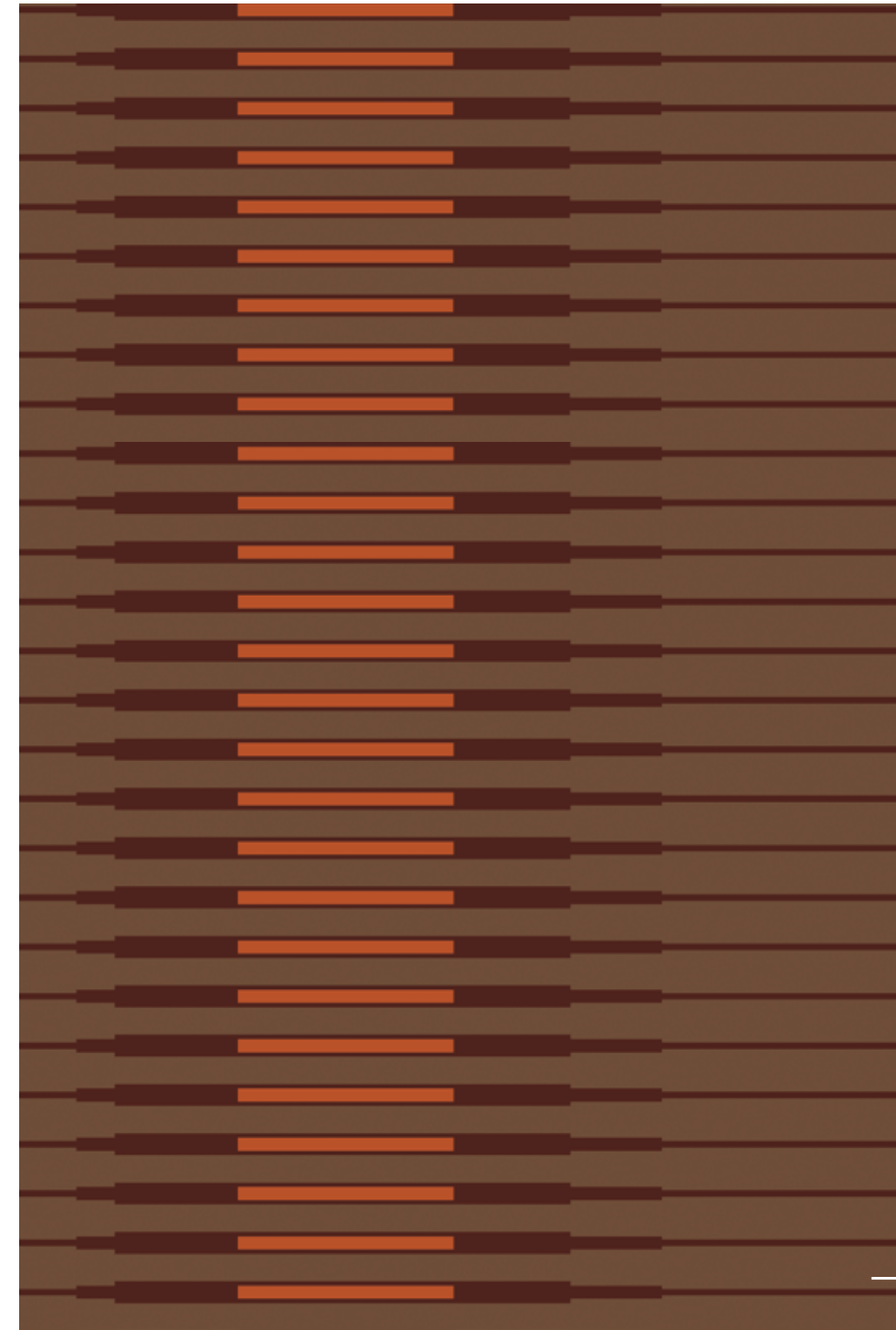


**BROADLOOM RUNNER 3**



Order #: 00352219  
 Pattern repeat:  
 81.00" W x 81.00" L

81.00" W x 121.50" L shown

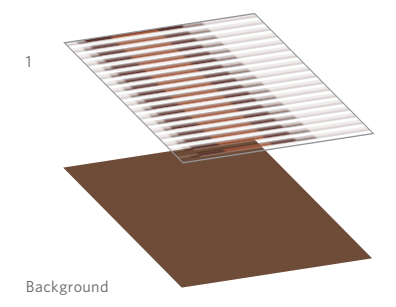


**BROADLOOM RUNNER 4**



Order #: 00352873  
 Pattern repeat:  
 81.00" W x 4.50" L

81.00" W x 121.50" L shown







Single pattern repeat



**BROADLOOM FIELD B — LIGHT**

3 6 8

Order #: 00353913  
Pattern repeat:  
40.50"W x 40.50"L

Single pattern repeat

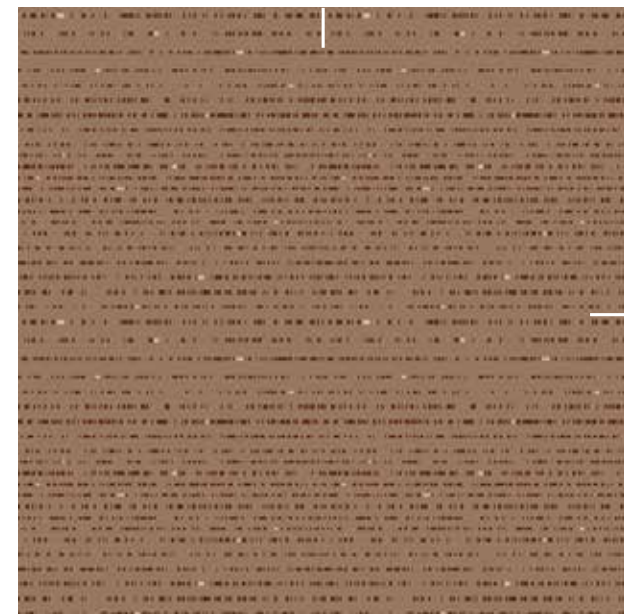


**BROADLOOM FIELD B — DARK**

2 6 8

Order #: 00353917  
Pattern repeat:  
40.50"W x 40.50"L

Four pattern repeats shown

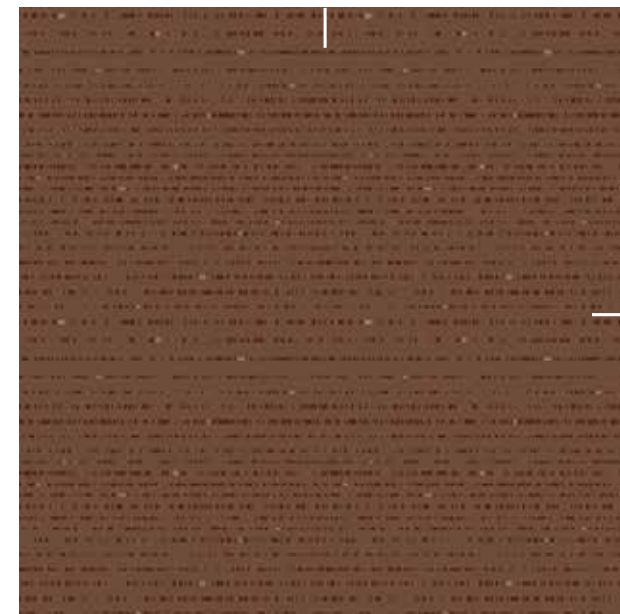


**BROADLOOM FIELD A — LIGHT**

3 8 9

Order #: 00353901  
Pattern repeat:  
20.25" W x 20.25" L

Four pattern repeats shown

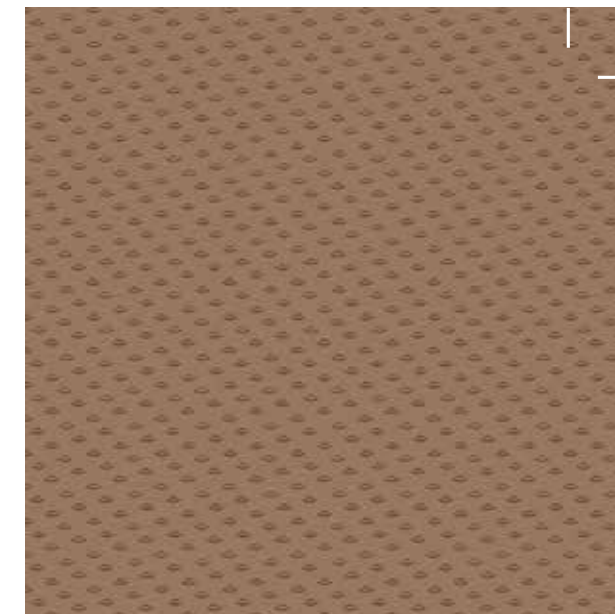


**BROADLOOM FIELD A — DARK**

2 6 8

Order #: 00355304  
Pattern repeat:  
20.25" W x 20.25" L

Eighty one pattern repeats shown

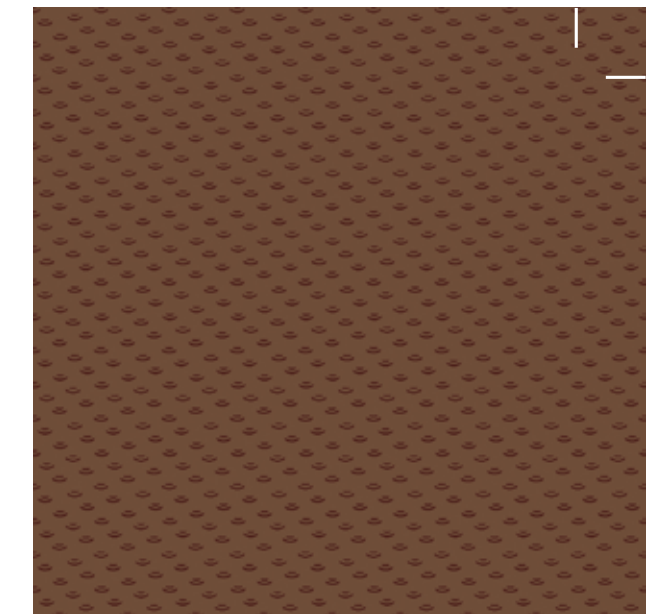


**BROADLOOM FIELD C — LIGHT**

6 8

Order #: 00353904  
Pattern repeat:  
4.50"W x 4.50"L

Eighty one pattern repeats shown



**BROADLOOM FIELD C — DARK**

2 6

Order #: 00353903  
Pattern repeat:  
4.50"W x 4.50"L



# Broadloom — Fields

Get more at [etage.milliken.com](http://etage.milliken.com)

Two pattern repeats shown

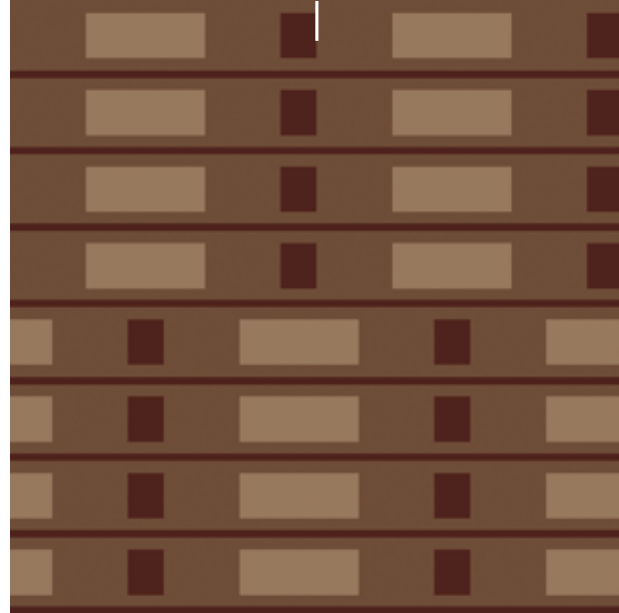


**BROADLOOM FIELD D — LIGHT**



Order #: 00353906  
Pattern repeat:  
20.25" W x 40.50" L

Two pattern repeats shown

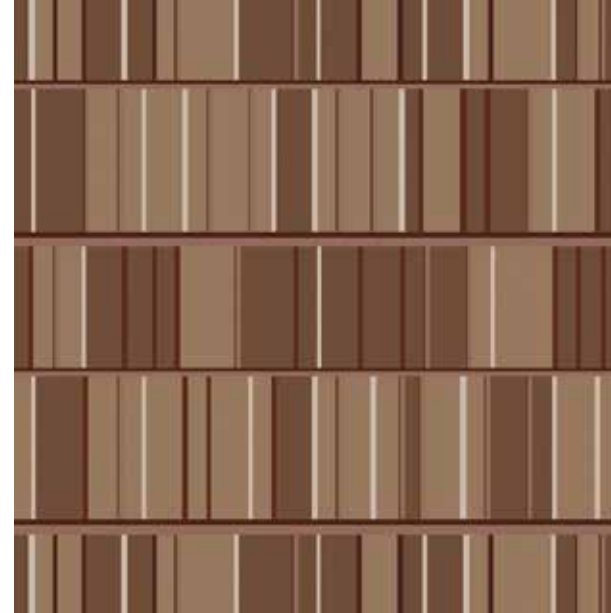


**BROADLOOM FIELD D — DARK**



Order #: 00353905  
Pattern repeat:  
20.25" W x 40.50" L

Single pattern repeat

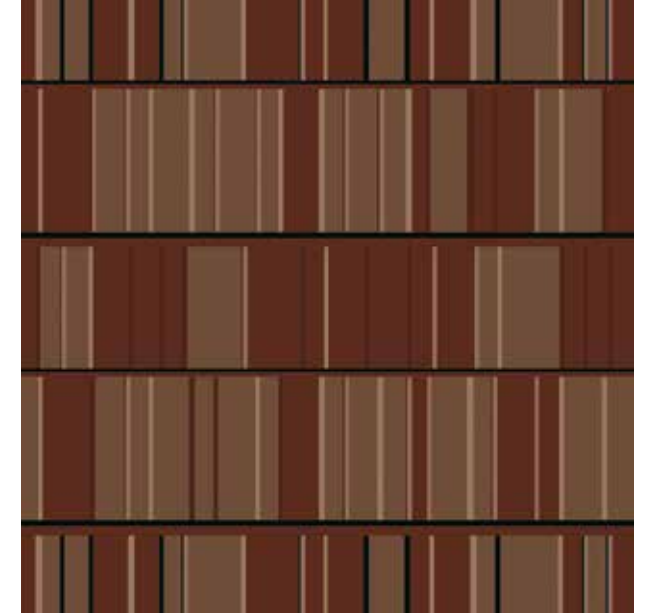


**BROADLOOM FIELD F — LIGHT**



Order #: 00353918  
Pattern repeat:  
40.50"W x 40.50"L

Single pattern repeat

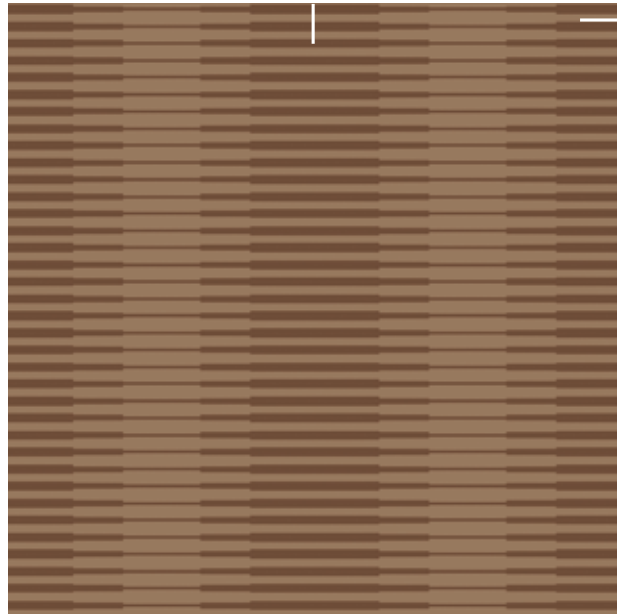


**BROADLOOM FIELD F — DARK**



Order #: 00355309  
Pattern repeat:  
40.50"W x 40.50"L

Thirty six pattern repeats shown

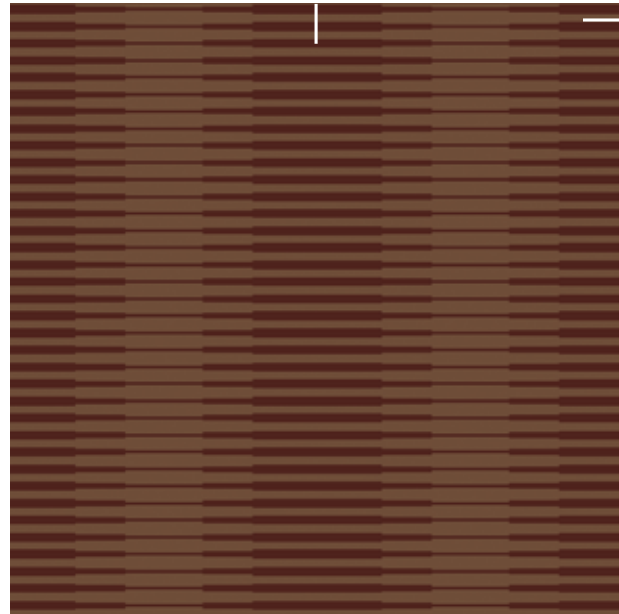


**BROADLOOM FIELD E — LIGHT**



Order #: 00352871  
Pattern repeat:  
20.25" W x 2.25" L

Thirty six pattern repeats shown

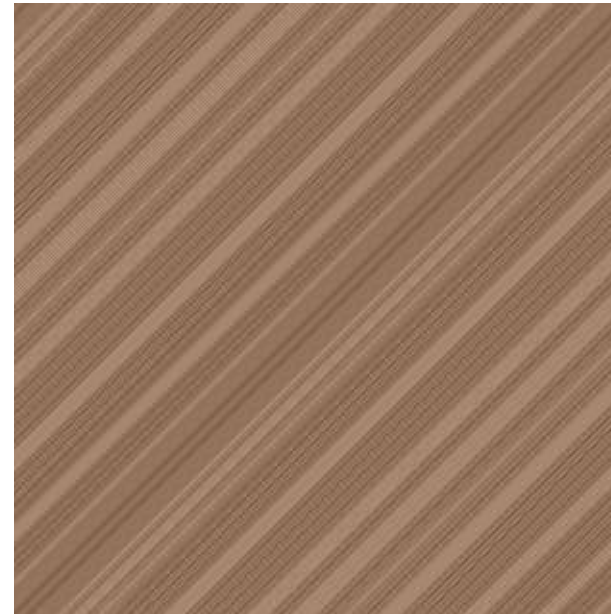


**BROADLOOM FIELD E — DARK**



Order #: 00352870  
Pattern repeat:  
20.25" W x 2.25" L

Single pattern repeat



**BROADLOOM FIELD G — LIGHT**



Order #: 00353908  
Pattern repeat:  
81.00"W x 81.00"L

Single pattern repeat



**BROADLOOM FIELD G — DARK**

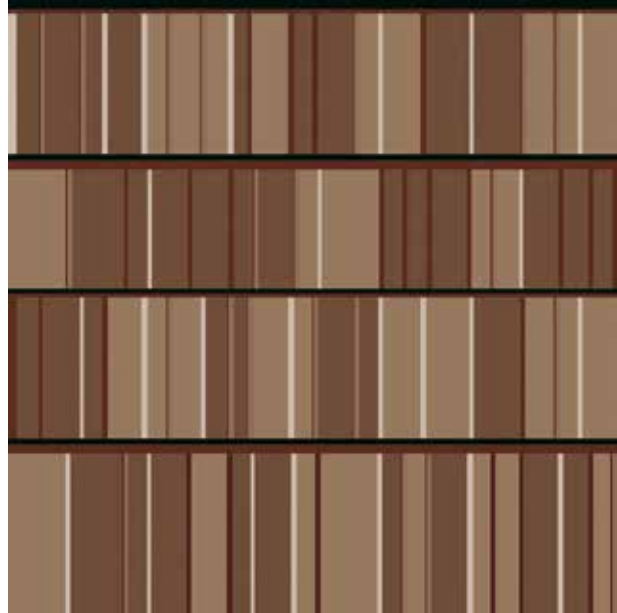


Order #: 00352869  
Pattern repeat:  
81.00"W x 81.00"L



# Modular Tile — Options

Single tile shown

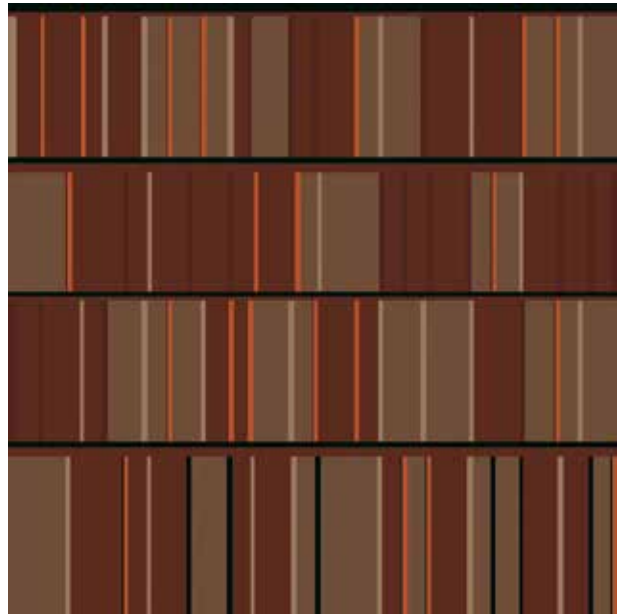


36" MODULAR TILE 1 — LIGHT

Order #: 00355276  
Pattern repeat:  
36.00" W x 36.00" L



Single tile shown

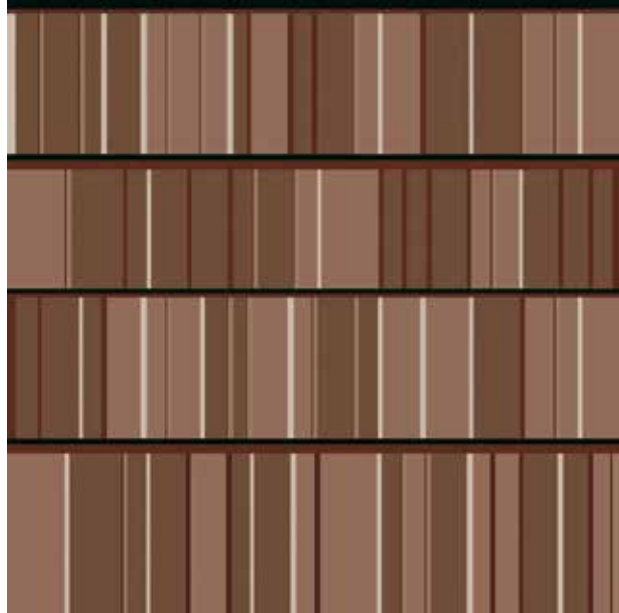


36" MODULAR TILE 3 — DARK WITH ACCENT

Order #: 00353921  
Pattern repeat:  
36.00" W x 36.00" L



Single tile shown



36" MODULAR TILE 2 — MEDIUM

Order #: 00355277  
Pattern repeat:  
36.00" W x 36.00" L



Single tile shown



36" MODULAR TILE 4 — ACCENT

Order #: 00353922  
Pattern repeat:  
36.00" W x 36.00" L



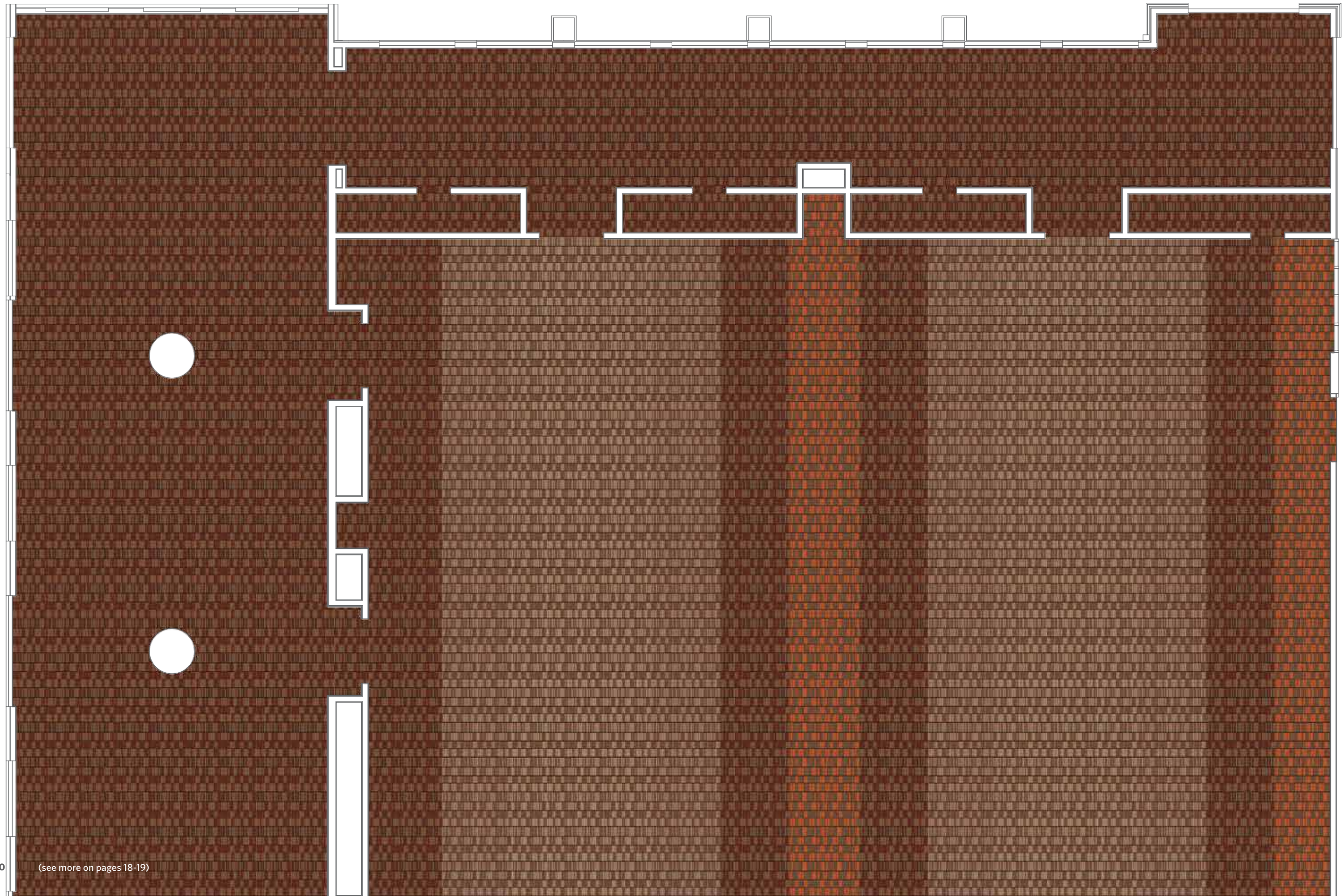
Get more at [etage.milliken.com](http://etage.milliken.com)

36" MODULAR TILE 3 — DARK WITH ACCENT

Order #: 00353921  
Pattern repeat:  
36.00" W x 36.00" L



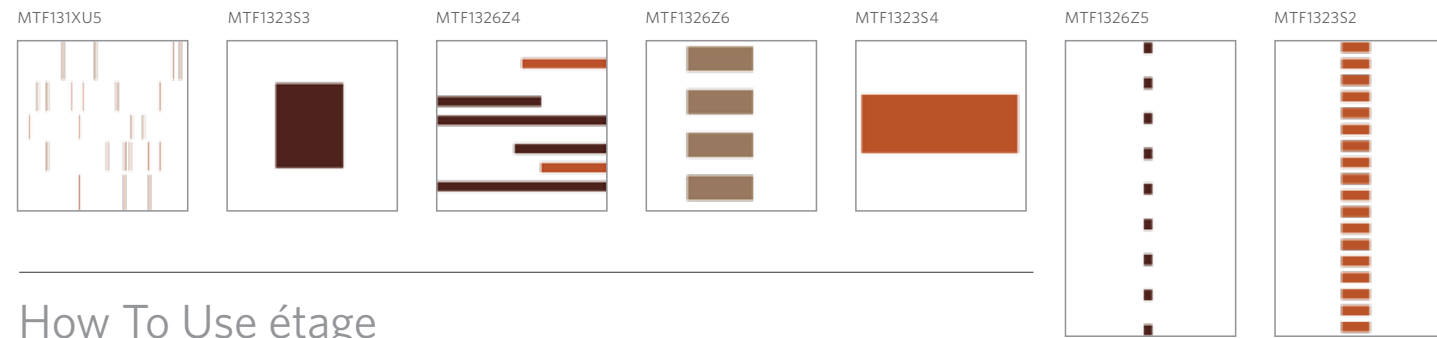






## Motifs

Single design elements, no repeat, on a transparent background



## How To Use étage

1

Select a design as shown in this brochure, or use étage technology to customize.

Add and subtract design layers and motifs to create your own look. Remember that you must always use at least two layers, one of which must be the background.

2

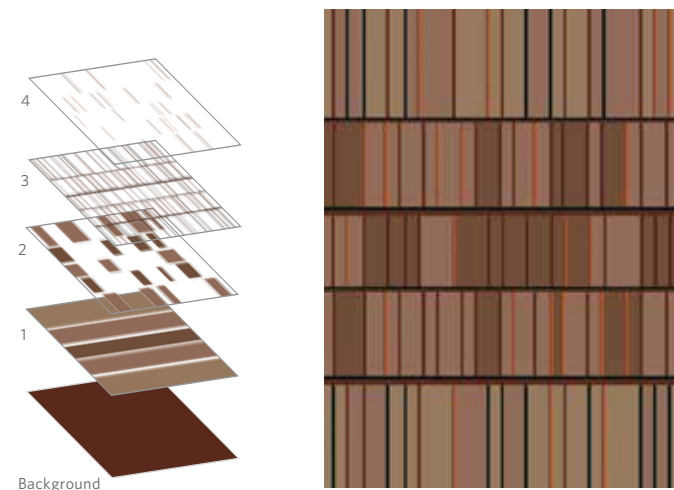
Designs in this brochure use a set of colors intended for this particular collection.

Specific colors used in each design are indicated below each pattern image as a swatch of the color with a number inside it. Refer to the colorway diagram on page 23 to find a corresponding color code. These colors are part of the Milliken Pure Color system.

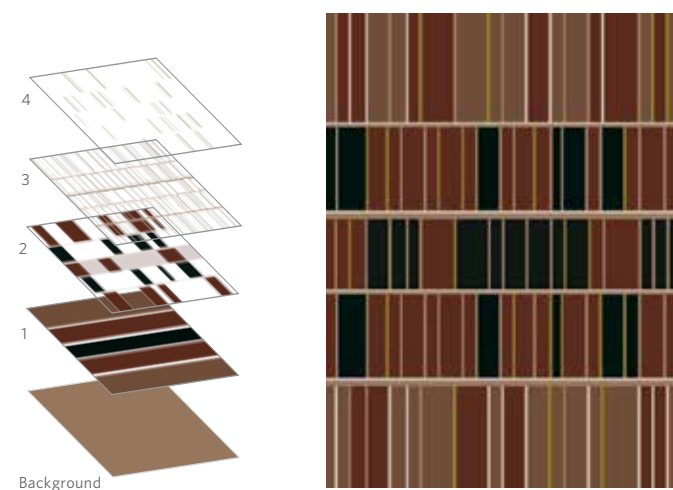
3

Choose a carpet construction that suits your installation.

Contact your Milliken representative to discuss the carpet construction that's best for you.



Designs shown in the brochure are ready to use, but you can also select them as a starting point for customization using étage technology.



No change is too great or too small (like simply choosing different colors from a pre-designed rug/runner).

## Colorway

The Cartesian collection has ten colors from over 1360 options in our Pure Color system.

Get more at [etage.milliken.com](http://etage.milliken.com)

pure|color

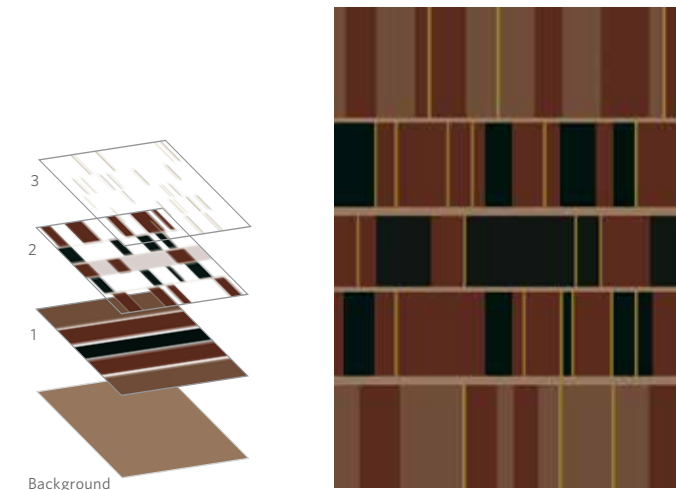
Based on the Natural Color System (NCS), the Pure Color Box lets designers play with the entire color wheel. With over 1360 defined colors and endless options in-between, PureColor makes custom easy.



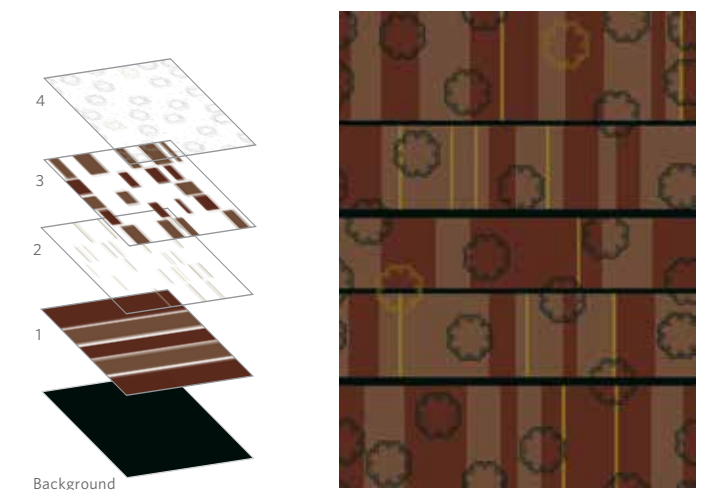
When it's time to break away from traditional hospitality looks, engage in étage technology.

This all-new process builds a complex pattern, layer by layer. Creating a fully custom look is as simple as choosing and combining layers — layers of organic design elements that defy traditional ideas of symmetry, boxes and borders. Étage technology brings a kind of freedom of design never before known in the hospitality industry.

Each collection includes small-, medium- and large-scale elements for ultimate flexibility in defining rugs, runners and open areas. Combine broadloom and modular and get the best of both. Freedom. Control. It's all here, waiting for an artist's touch. Exclusively from Milliken.



Layers can be added, subtracted, re-ordered, rotated, re-sized and re-colored in any combination to suit your needs.

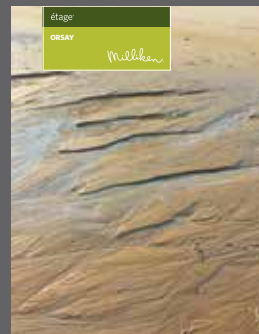
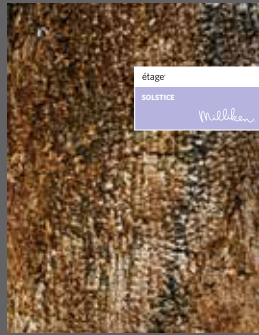


Best of all, repeating layers and motifs from all étage collections can be used together to create a myriad of designs.



# OTHER DESIGNS IN ÉTAGE

Have you seen all of our patterns? Étage allows you to use design elements from any design collection. Visit us online today and experience all that étage has to offer.



Gold of Platinum Certified  
NSF/ANSI 140 - 2007a  
International Green Association



**Growing greener for over 100 years.**  
Visit [milliken.com](http://milliken.com) for more information.

800.334.7749 (USA and Canada) | [milliken.com](http://milliken.com)  
Design © Milliken & Company | Made in the USA

Cover image: Modern Building (wireframe) ©2014 Thinkstock