

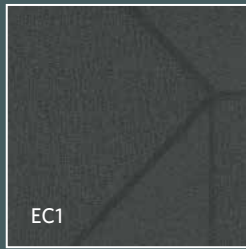
CONSTANTINE

CITY PROPER

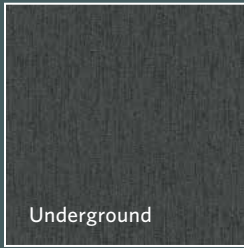
Design Quarter / EC1
Underground



Design Quarter



EC1



Underground



Milliken™



INSPIRED.

Pavement markings, worn asphalt, and heavily traveled concrete create direction for us in our daily existence. But what happens below the streets shapes our perspective on elements that create life in the city. It's the intertwining cables, paths, tunnels, and layers of municipal structure that reveal how a city breathes and evolves. City Proper challenges us to examine beyond the expected surface, to consider multiple levels of construction and texture, light and shadow.

EC1 in Empire, monolithic tile installation



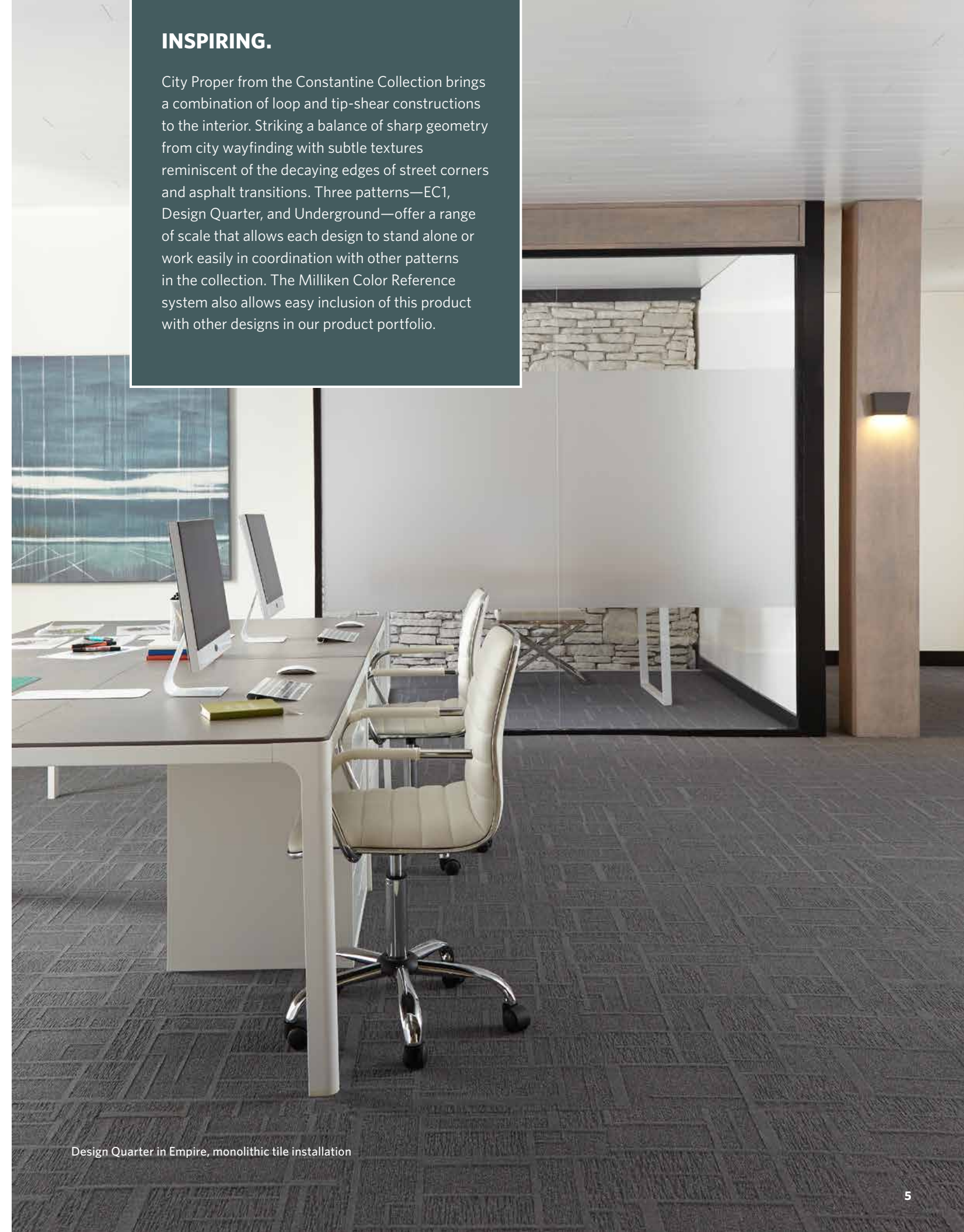
EC1 in Empire, monolithic tile installation, with Eero LVT in EER79-13, vertical ashlar plank installation



Underground in Empire, monolithic tile installation

INSPIRING.

City Proper from the Constantine Collection brings a combination of loop and tip-shear constructions to the interior. Striking a balance of sharp geometry from city wayfinding with subtle textures reminiscent of the decaying edges of street corners and asphalt transitions. Three patterns—EC1, Design Quarter, and Underground—offer a range of scale that allows each design to stand alone or work easily in coordination with other patterns in the collection. The Milliken Color Reference system also allows easy inclusion of this product with other designs in our product portfolio.



Design Quarter in Empire, monolithic tile installation



EC1 (*field*) and Underground (*border*) in John's Gate, monolithic tile installation



EC1, Design Quarter, and Underground (left to right) in Empire

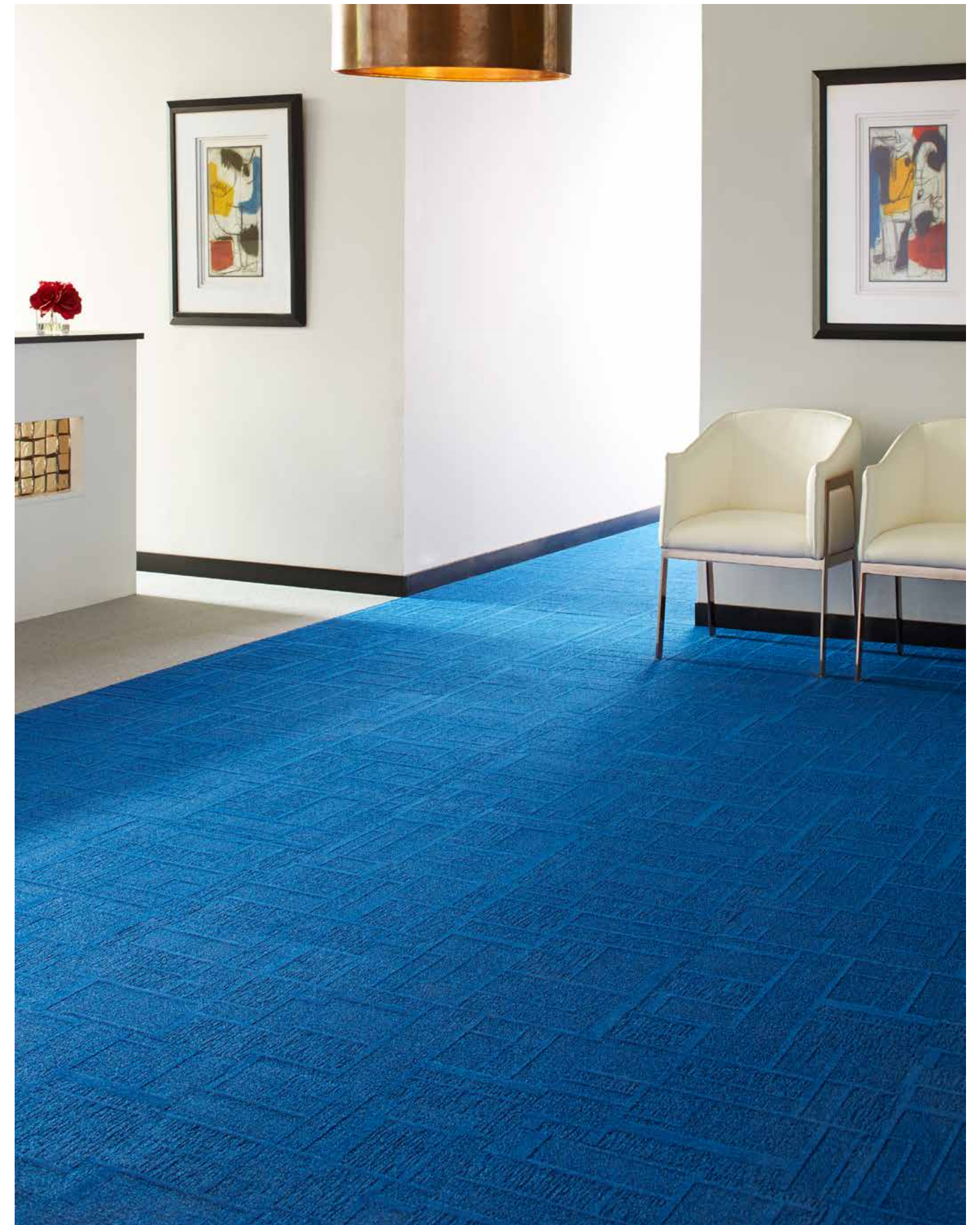


Get more at millikenfloors.com

EC1 and Underground in Ellis, random mix monolithic tile installation

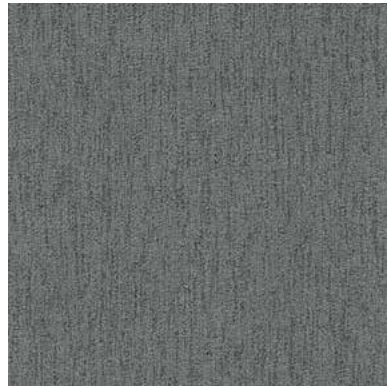


EC1 in Market (*foreground*) with Formwork in Vault (*office*), monolithic tile installation

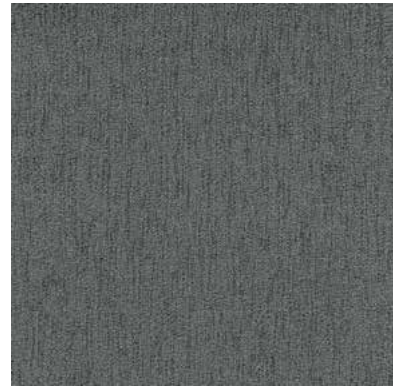


Design Quarter in Bryant (*foreground*) with Formwork in Pedestal (*reception area*), monolithic tile installation

Colorline shown in **Underground**



UDG108 FRENCH QUARTER
(EC1 ECC108, Design Quarter DES108)



UDG153 RADIO ROW
(EC1 ECC153, Design Quarter DES153)



UDG48 MADISON SQUARE
(EC1 ECC48, Design Quarter DES48)



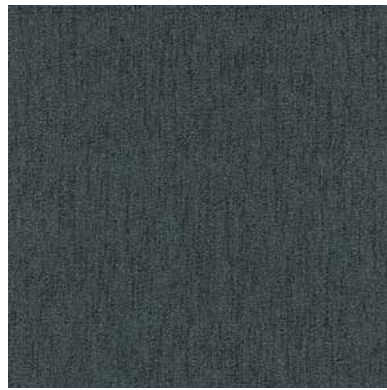
UDG15 CENTRAL
(EC1 ECC15, Design Quarter DES15)



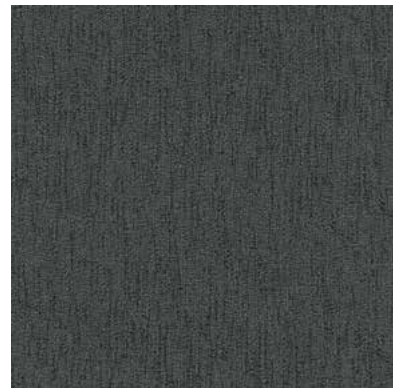
UDG141 GREENWAY
(EC1 ECC141, Design Quarter DES141)



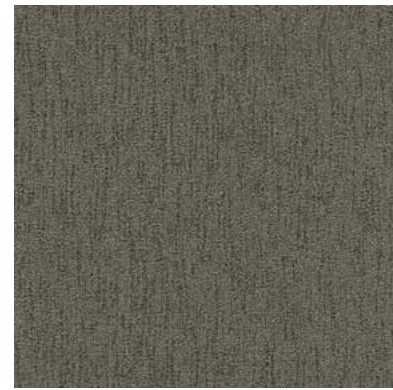
UDG231 GRAMERCY
(EC1 ECC231, Design Quarter DES231)



UDG154 WALL STREET
(EC1 ECC154, Design Quarter DES154)



UDG174 EMPIRE
(EC1 ECC174, Design Quarter DES174)



UDG122 JOHN'S GATE
(EC1 ECC122, Design Quarter DES122)



UDG124 HUDSON
(EC1 ECC124, Design Quarter DES124)



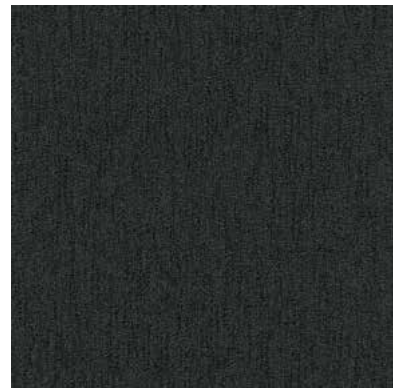
UDG203 HIGHLINE
(EC1 ECC203, Design Quarter DES203)



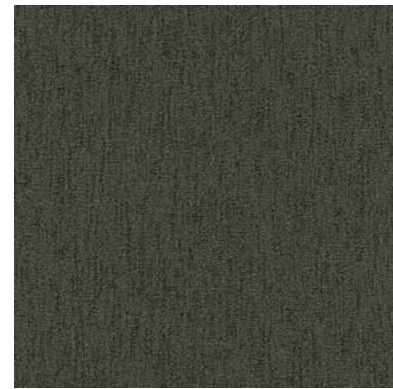
UDG169 CHELSEA
(EC1 ECC169, Design Quarter DES169)



UDG52 LIBERTY
(EC1 ECC52, Design Quarter DES52)



UDG119 FLATIRON
(EC1 ECC119, Design Quarter DES119)



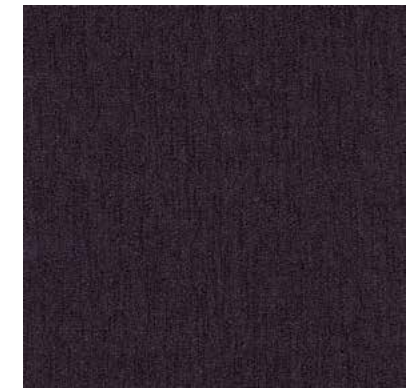
UDG120 CORNER HOUSE
(EC1 ECC120, Design Quarter DES120)



UDG94 MUIR
(EC1 ECC94, Design Quarter DES94)



UDG201 SOHO
(EC1 ECC201, Design Quarter DES201)



UDG66 FONTSIZE
(EC1 ECC66, Design Quarter DES66)



UDG107 ELLIS
(EC1 ECC107, Design Quarter DES107)



UDG27 SINGING BRITON
(EC1 ECC27, Design Quarter DES27)



UDG133 MARKET
(EC1 ECC133, Design Quarter DES133)



UDG59 BROOKLYN
(EC1 ECC59, Design Quarter DES59)



UDG229 ISLINGTON BOROUGH
(EC1 ECC229, Design Quarter DES229)

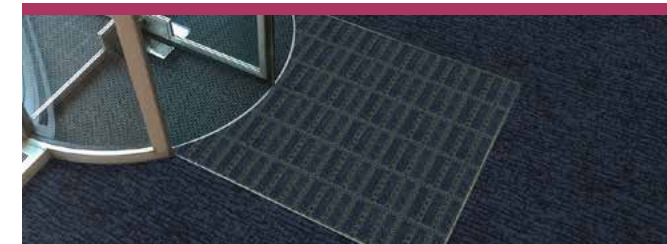


UDG183 BRYANT
(EC1 ECC183, Design Quarter DES183)

Complete Flooring Solutions



Milliken Floor Covering offers products and expertise in all areas of your commercial spaces, including high-performance entryway systems, broadloom & modular carpet, luxury vinyl tile, and milliCare®. Simplify your flooring needs with a trusted partner that will let you enjoy creating a great space without having to worry about everything else.



Entry Systems

The OBEX® brand of products offers highly effective, comprehensive modular entry solutions designed as a three-zone barrier system to prevent dirt and moisture from entering the building.

Available in coordinated colors and patterns, OBEX® entry products are engineered to increase the functionality of a building's entrance without forsaking elements of design or aesthetic. Simple and easy to work with, OBEX® offers entry systems that can be recessed or surface-mounted as well as exterior and interior applications.



Broadloom & Modular Carpet

Milliken's broadloom and carpet tile incorporate the latest innovations in tufting and dyeing technology, achieving unique looks and excellent performance. With our Color Reference system, coordinating multiple products across a single project is a snap; whether it's carpet, LVT, or entry systems. All carpet tile products have cushion backing for an extended lifespan, as well as ergonomic and environmental benefits. Broadloom carpet also has cushion-back options, and all are standard with StainSmart®, a proprietary treatment applied to Milliken carpets to repel and protect against stains and enhance soil release.



Luxury Vinyl Tile

From natural looks of wood and stone to more modern textures and abstracts, Milliken's collection of Luxury Vinyl Tile flooring creates new options for a commercial or hospitality interior. Our simple-to-search Color Reference system provides easy coordination of the LVT options to modular and broadloom carpets. From carpet tile to broadloom to planks to LVT, Milliken provides durable and elegant options for your project.



milliCare®

We care for the environment with products and a method that improve Indoor Air Quality and reduce water consumption and your carbon footprint. We care about you professionally by saving you time through customized service plans for your entire space provided for by our franchise network. You work healthier and live healthier, and the planet is a better place because of it. We can bring that same quality of care and service to you wherever you are. milliCare takes caring for your flooring and textiles off your to-do list, which means that you get to skip right to the part where you get to lean back, put your hands behind your head, and be a hero for keeping a beautifully cleaned space.

CITY PROPER

Design Quarter / EC1 / Underground

Images in this brochure are approximate for color and pattern scale. Please use actual carpet samples to make your final selections.

Have you seen our other collections? Visit us online today.



Formwork



Lination



Surface Study



Whale Song



Construction

Design Quarter, EC1: Tufted, Tip Shear
Underground: Tufted, Loop

Tile Size

50 cm x 50 cm (19.7" x 19.7")

Yarn Type

Universal® Fibers Solution-Dyed
Nylon Type 6,6

Stain Repel & Resist / Soil Release

StainSmart®

Tufted Face Weight

Design Quarter, EC1:
22 oz/yd² (746 g/m²)
Underground: 24 oz/yd² (814 g/m²)

Finished Pile Height

Design Quarter, EC1: 0.175" (4.45 mm)
Underground: 0.180" (4.57 mm)

Finished Pile Thickness

Design Quarter: 0.129" (3.28 mm)
EC1: 0.128" (3.25 mm)
Underground: 0.129" (3.28 mm)

Average Density

Design Quarter: 5,810
EC1: 5,878
Underground: 5,785

Standard Backing

PVC-Free Comfort Plus® ES Cushion
Comfort Plus® is available with TractionBack®

Texture Appearance Retention Rating (TARR)

Design Quarter, EC1: Heavy
Underground: Severe

Recommended Installation Method



MONOLITHIC

TractionBack®

Simplify your modular installation with Milliken's patented TractionBack®, an innovative backing system that is faster, more cost efficient, and environmentally superior to wet adhesives and peel-and-stick carpet tile.



This cushion-back carpet tile product is covered by one or more patents, published applications and/or patents pending. Specifications are subject to normal manufacturing tolerances and may be changed without prior notice.

Growing greener for over 100 years.

This product has a UL® Environment 3rd party verified Environmental Product Declaration (EPD). A copy of the EPD is available online at millikencarpet.com/epd and productguide.ulenvironment.com.