



COASTLINE

Milliken™



## WHERE LAND AND SEA FLOW TOGETHER.

The Coastline collection was inspired by natural transitions of land and water - ocean waves, sandy beaches, grassy marshes and rocky cliffs. Whether you want a relaxed atmosphere or vibrant energy, these subtle gradients will allow you to create spaces that organically connect and flow.



COLOR



LEFT TRANSITION



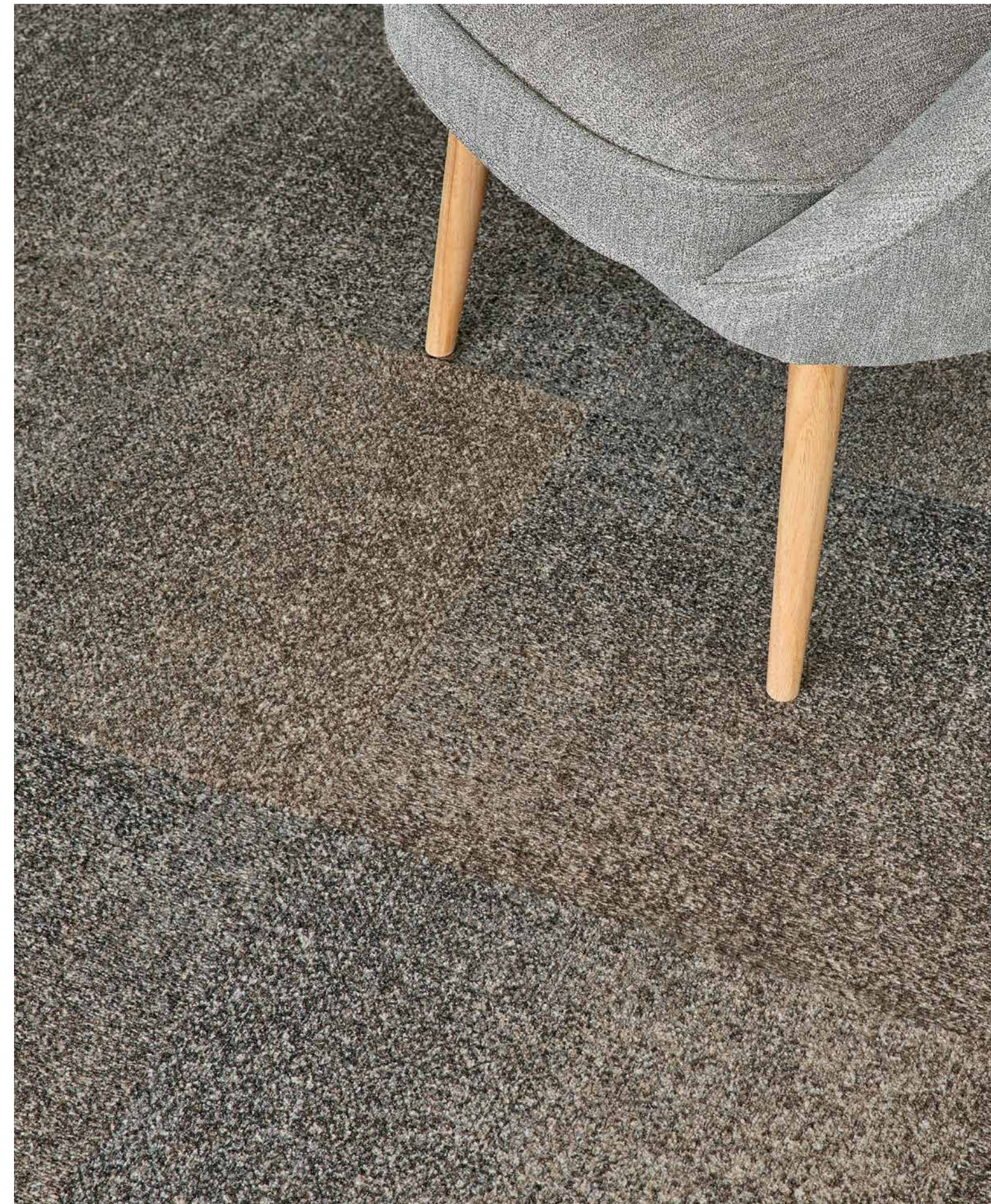
NEUTRAL



RIGHT TRANSITION

## COAST-TO-COAST GOES WALL-TO-WALL.

The modular system makes it easy to define spaces and incorporate wayfinding. Two distinct patterns, six neutrals and twelve colors offer ample diversity. Explore a variety of natural gradients as well as random layouts to achieve your design vision.





## WE HONOR THE COASTLINE BY PROTECTING IT.

The Coastline collection is printed on ECONYL® yarn, which is made from reclaimed fishing nets, carpets, and nylon waste otherwise destined for our landfills and oceans. This recycled nylon has the same characteristics as nylon made from virgin raw material. Creating beautiful carpet using innovative science is at the core of our **M/PACT™ carbon neutral program**. Coastline is further proof that you don't have to sacrifice aesthetics to be a responsible global citizen.



## SEAMLESSLY TRANSITION FROM BEACH TO BOARDWALK.

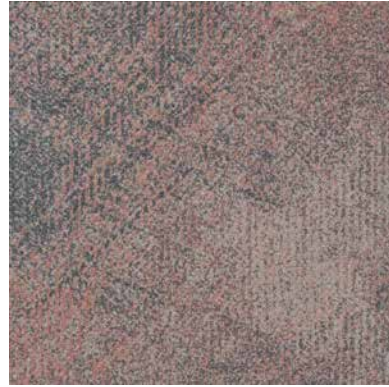
Milliken offers multiple collections of resilient flooring that complement Coastline. Choose the look of natural wood and stone or something entirely unexpected. We've made it easy to pair flooring tiles to enhance the form and function of any space.



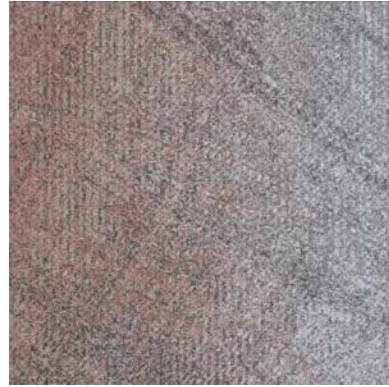
## AS COMFORTABLE AS WALKING BAREFOOT IN THE SAND.

Improve wellness in the workplace with WellBAC® cushion backing. It can reduce muscle strain by as much as 24% compared to hardback tiles, making a noticeable improvement to comfort in sit-to-stand environments. It absorbs 50% more noise than hardback which can reduce stress and improve concentration. Our cushion backing was even designed to be permeable, allowing water vapor to pass through and evaporate, eliminating the risk of moisture problems. Put simply, Coastline is the perfect combination of science and aesthetics.

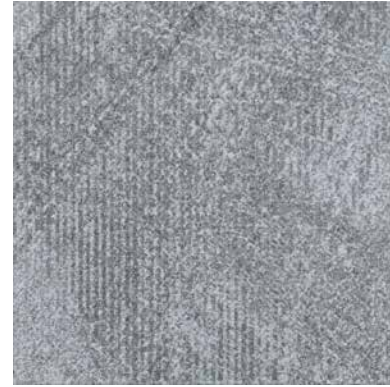
COASTLINE IN LANDSCAPE



**SCALLOP**  
LND153-261



**SCALLOP/LIGHTHOUSE**  
LNT153-261/215-153  
LNT215-153/153-261



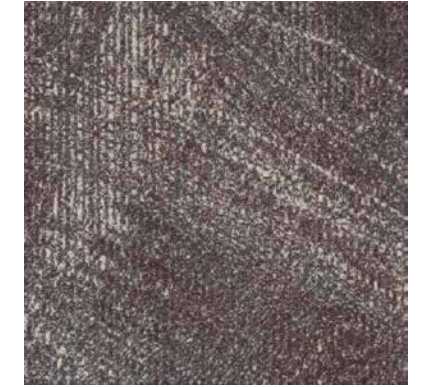
**LIGHTHOUSE**  
LND215-153



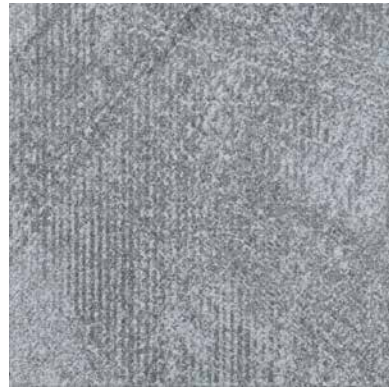
**PAMPAS GRASS**  
LND153-144



**PAMPAS GRASS/MUSSEL**  
LNT153-144/209-263  
LNT209-263/153-144



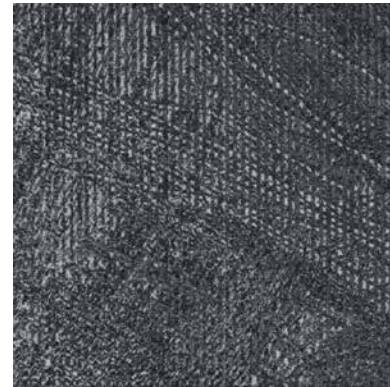
**MUSSEL**  
LND209-263



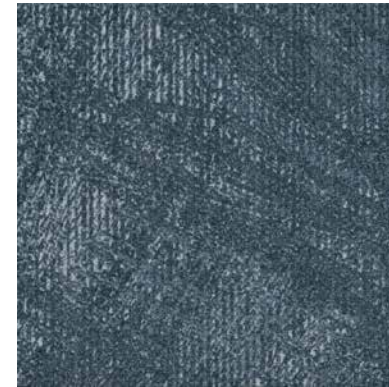
**LIGHTHOUSE**  
LND215-153



**LIGHTHOUSE/SEABED**  
LNT215-153/215-119  
LNT215-119/215-153



**SEABED**  
LND215-119



**ATLANTIC**  
LND118-73



**ATLANTIC/ROCKPOOL**  
LNT118-73/153  
LNT153/118-73



**ROCKPOOL**  
LND153



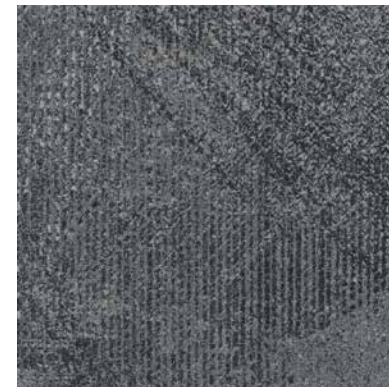
**CRUSH**  
LND5-15



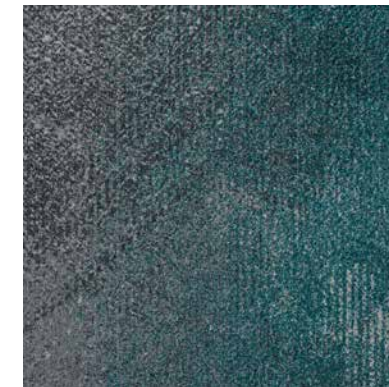
**CRUSH/PAMPAS GRASS**  
LNT5-15/153-144  
LNT153-144/5-15



**PAMPAS GRASS**  
LND153-144



**ROCKPOOL**  
LND153



**ROCKPOOL/MARITIME**  
LNT153/118-125  
LNT118-125/153



**MARITIME**  
LND118-125

COASTLINE IN LANDSCAPE

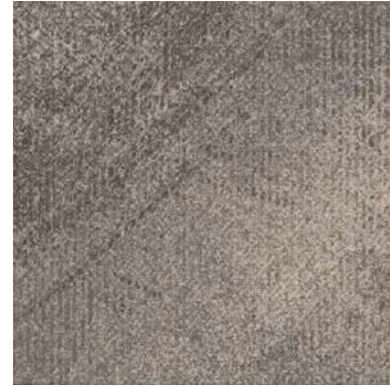
COASTLINE IN LANDSCAPE



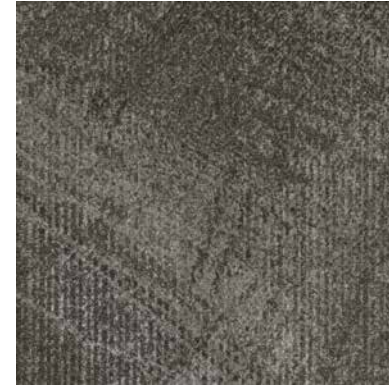
**SHORE**  
LND96-65



**SHORE/SANDBAR**  
LNT96-65/254-15  
LNT254-15/96-65



**SANDBAR**  
LND254-15



**DUNE**  
LND59-124



**DUNE/Shoreline**  
LNT59-124/79-120  
LNT79-120/59-124



**Shoreline**  
LND79-120



**SANDBAR**  
LND254-15



**SANDBAR/SEA OAT**  
LNT254-15/59  
LNT59/254-15



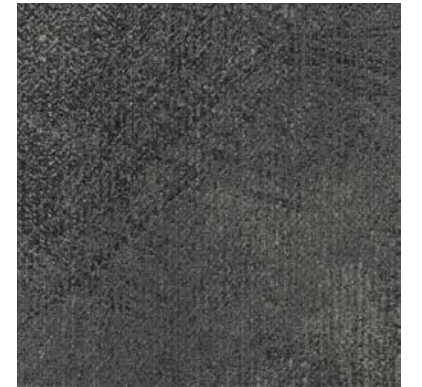
**SEA OAT**  
LND59



**SANDPIPER**  
LND250



**SANDPIPER/GREY SEAL**  
LNT250/133-13  
LNT133-13/250



**GREY SEAL**  
LND133-13



**PELICAN**  
LND180



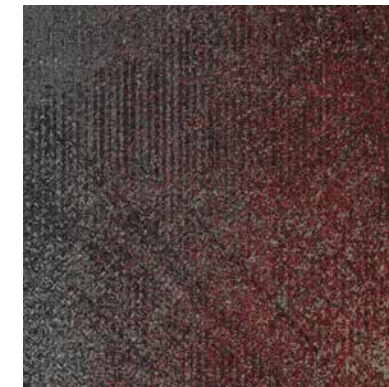
**PELICAN/DUNE**  
LNT180/59-124  
LNT59-124/180



**DUNE**  
LND59-124



**GREY SEAL**  
LND133-13



**GREY SEAL/ANEMONE**  
LNT133-13/60  
LNT60/133-13



**ANEMONE**  
LND60

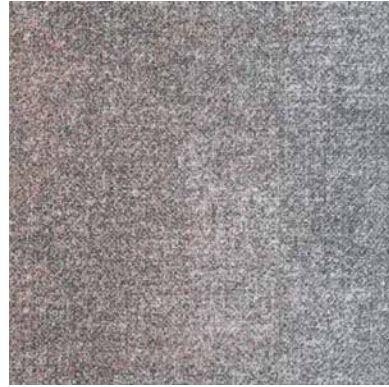
COASTLINE IN LANDSCAPE



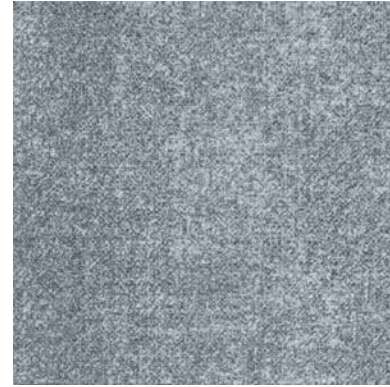
COASTLINE IN SEASCAPE



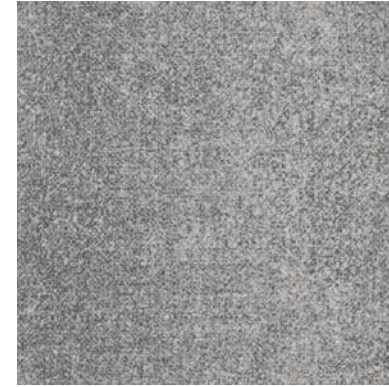
**SCALLOP**  
SEA153-261



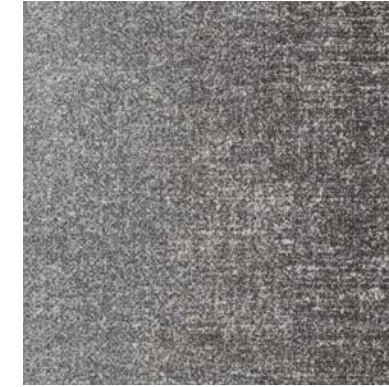
**SCALLOP/LIGHTHOUSE**  
SET153-261/215-153  
SET215-153/153-261



**LIGHTHOUSE**  
SEA215-153



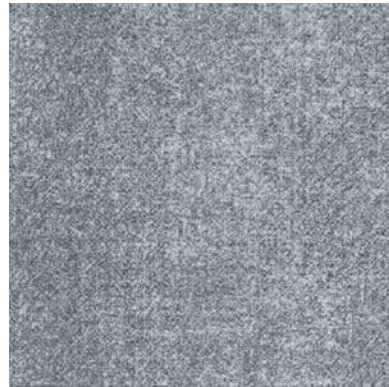
**PAMPAS GRASS**  
SEA153-144



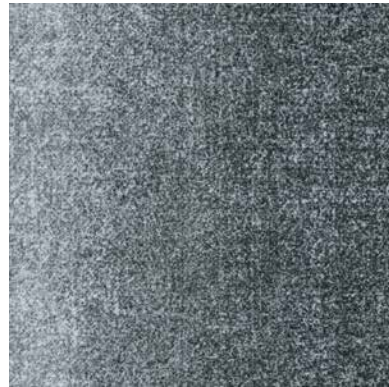
**PAMPAS GRASS/MUSSEL**  
SET153-144/209-263  
SET209-263/153-144



**MUSSEL**  
SEA209-263



**LIGHTHOUSE**  
SEA215-153



**SEABED/LIGHTHOUSE**  
SET215-153/215-119  
SET215-119/215-153



**SEABED**  
SEA215-119



**ATLANTIC**  
SEA118-73



**ATLANTIC/ROCKPOOL**  
SET118-73/153  
SET153/118-73



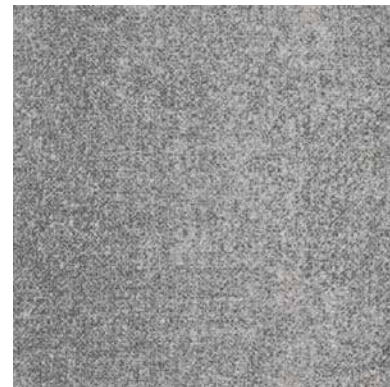
**ROCKPOOL**  
SEA153



**CRUSH**  
SEA5-15



**CRUSH/PAMPAS GRASS**  
SET5-15/153-144  
SET153-144/5-15



**PAMPAS GRASS**  
SEA153-144



**ROCKPOOL**  
SEA153



**ROCKPOOL/MARITIME**  
SET153/118-125  
SET118-125/153



**MARITIME**  
SEA118-125

COASTLINE IN SEASCAPE

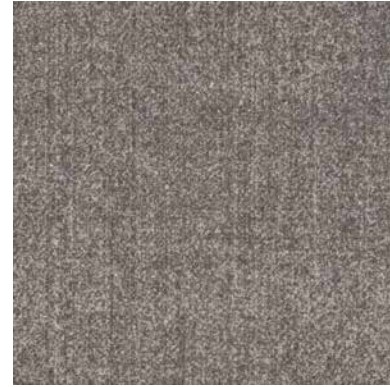
COASTLINE IN SEASCAPE



**SHORE**  
SEA96-65



**SHORE/SANDBAR**  
SET96-65/254-15  
SET254-15/96-65



**SANDBAR**  
SEA254-15



**SANDBAR**  
SEA254-15



**SANDBAR/SEA OAT**  
SET254-15/59  
SET59/254-15



**SEA OAT**  
SEA59



**PELICAN**  
SEA180

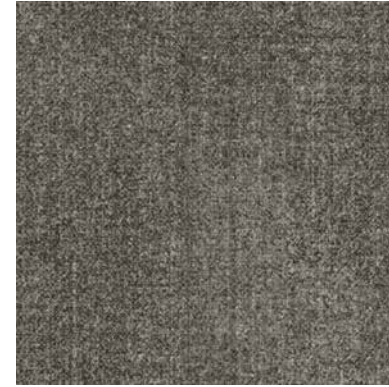


**PELICAN/DUNE**  
SET180/59-124  
SET59-124/180



**DUNE**  
SEA59-124

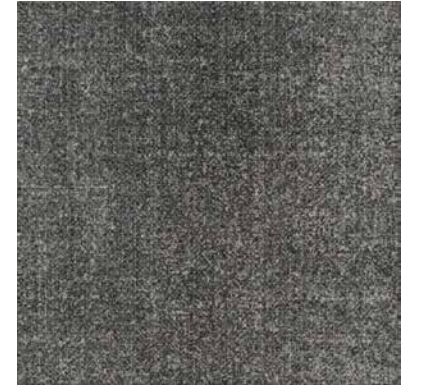
COASTLINE IN SEASCAPE



**DUNE**  
SEA59-124



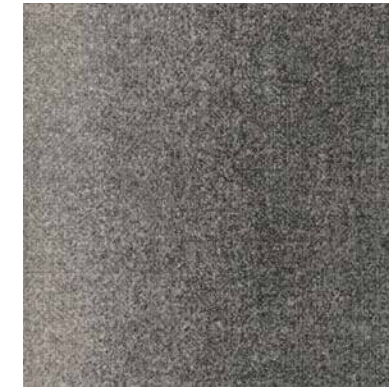
**DUNE/Shoreline**  
SET59-124/79-120  
SET79-120/59-124



**Shoreline**  
SEA79-120



**SANDPIPER**  
SEA250



**SANDPIPER/GREY SEAL**  
SET250/133-13  
SET133-13/250



**GREY SEAL**  
SEA133-13



**GREY SEAL**  
SEA133-13



**GREY SEAL/ANEMONE**  
SET133-13/60  
SET60/133-13



**ANEMONE**  
SEA60



# COASTLINE

Landscape / Seascape

**Construction**  
Tufted, Textured Loop

**Tile Size**  
50 cm x 50 cm  
(19.7" x 19.7")

**Yarn Type**  
ECONYL® Nylon

**Stain Resist / Soil Release**  
StainSmart®

**Standard Backing**  
PVC-Free WellBAC®  
Comfort Cushion  
Available with  
TractionBack®

**Texture Appearance Retention Rating (TARR)**  
Severe Traffic End-Use Applications

**Recommended Installation Methods**



MONOLITHIC ASHLAR



QUARTER-TURN



Scan to explore the collection story.

## SUSTAINABLE FEATURES

Coastline is manufactured with WellBAC® Comfort cushion backing, and is certified NSF-140 Gold with 47.9% pre-consumer recycled content by total product weight. Coastline is also available with our NSF-140 Platinum backing option.

All Milliken modular carpets carry Environmental Product Declarations and Health Product Declarations, which contribute to LEED certification. Additionally, Milliken modular carpets carry Declare® transparency labels and comply with the Red List Imperative of the Living Building Challenge.™



**M/PACT™**  
CARBON NEUTRAL PRODUCT

**ECONYL®**



M/PACT carbon neutral products offset the raw materials and manufacturing carbon footprint\* by using 3rd party Verified Carbon Standard Credits that support renewable energy and carbon reduction technologies to help fight climate change. When you choose M/PACT products, you can be sure your choice is carbon neutral.

## TRACTIONBACK®

Simplify your modular installation with Milliken's patented TractionBack®, an innovative backing system that is faster, more cost efficient, and environmentally superior to wet adhesives and peel-and-stick carpet tile.

## SHOWN ON THE COVER

(Front) Landscape in Shoreline LND79-120, Shoreline/Dune LNT79-120/59-124, and Dune LND59-124. Ashlar.  
(Back) Seascape in Anemone SEA60. Ashlar.

Images in this brochure and architect folder are approximate for color and pattern scale. Please use actual carpet samples to make your final selections.

\*As calculated and verified A1-3 GWP through an ISO14025/ISO14040 compliant LCA and published in third party EPDs.

Milliken™