



**ELEVATION**

Milliken™



**INSPIRED. INSPIRING.**

Every drop moves in full unison until the power of many is greater than one. Each splash and trickle enabling the power to create. Shapes emerge and patterns form as our perspective sees the space before us change from one of everyday object to one of natural awe.



# COLORLINE



TRU14 KAOLIN



TRU69 FOHN



TRU41 HAMADA



TRU86 TERRAIN



TRU108 ZONAL



TRU79 RAVINE



TRU76 SANDBAR



TRU77 CANYON



TRU94 KARST



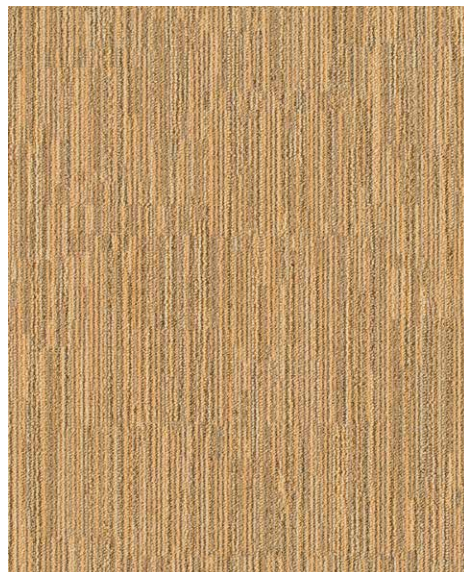
TRU27 SHADOW MARK



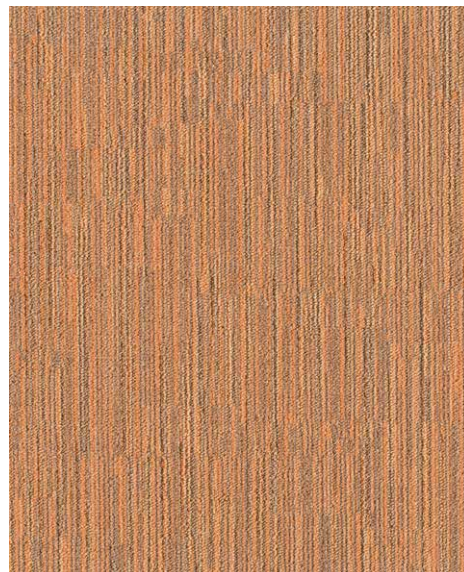
TRU67 BASALT



TRU133 MAGNETIC



TRU134 HEATH



TRU135 ALBEDO



TRU102 MAGMA PLUME



TRU109 RED TIDE



TRU137 FLORA

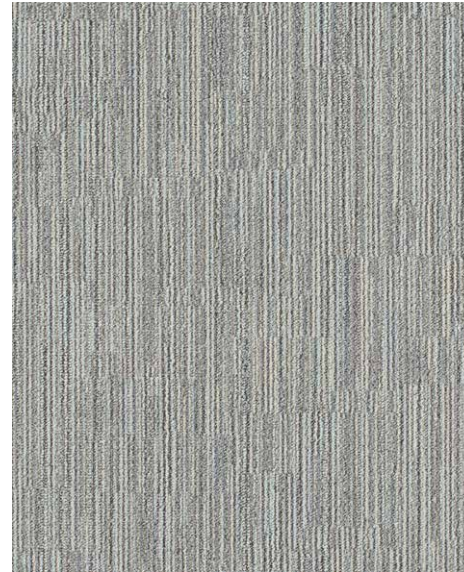


TRU182 RELIEF





TRU13 BAHADA



TRU132 SATELLITE



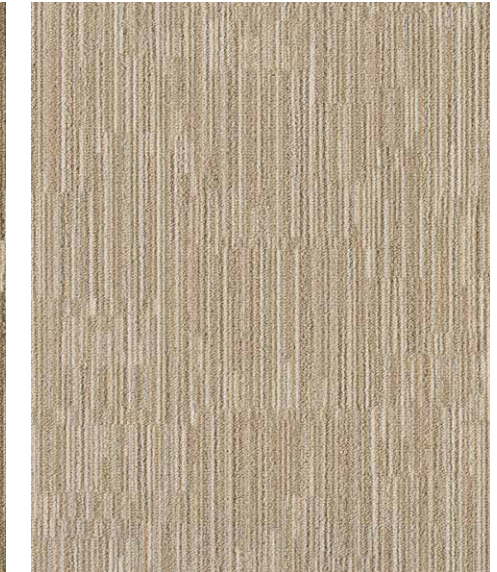
TRU157 COASTAL



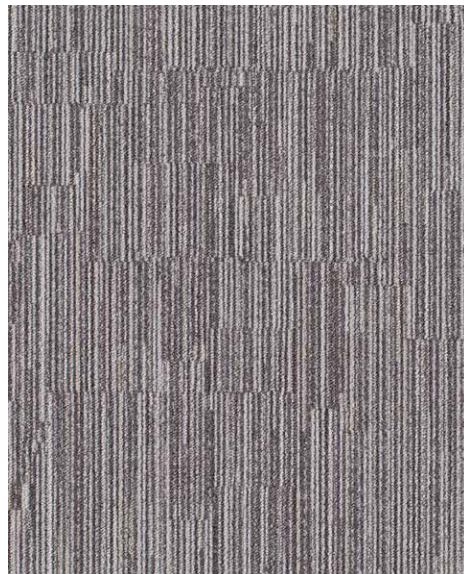
TRU43 ATOLL



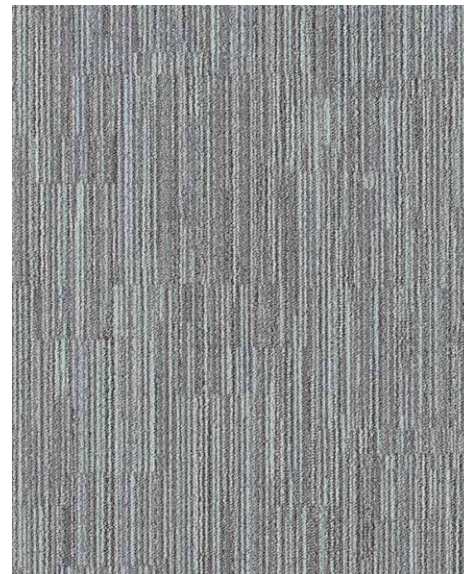
TRU87 CANOPY



TRU81 MESA



TRU174 OOLITH



TRU25 ARIEL



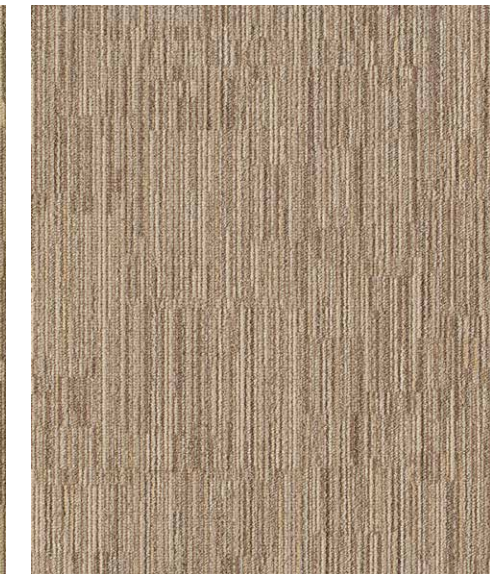
TRU52 DELTA



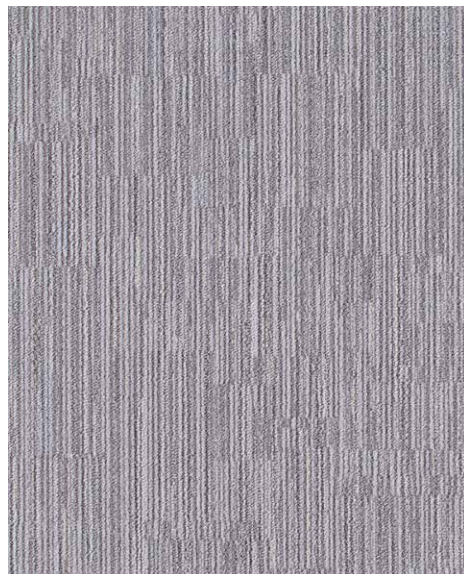
TRU56 KAME



TRU45 BAY



TRU42 FEN



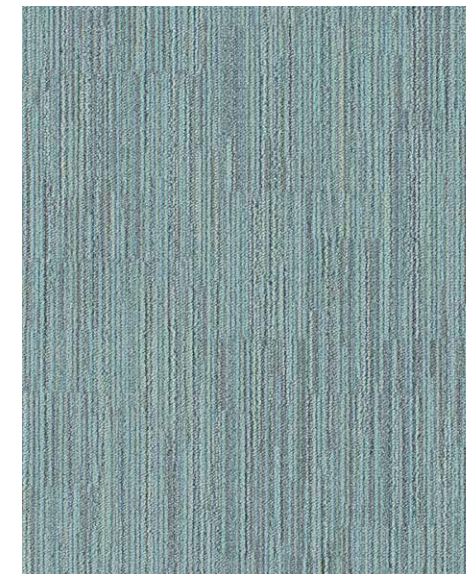
TRU138 SPATIAL



TRU126 AQUIFER



TRU183 CIRQUE



TRU140 OASIS



TRU103 AURORA



TRU141 FAUNA



# ELEVATION

## True North

### Construction

Tufted, Textured Loop

### Tile Sizes

50 cm x 50 cm (19.7" x 19.7")

1 m x 1 m (39.4" x 39.4")

50 cm x 1 m (19.7" x 39.4")

25 cm x 1 m (9.84" x 39.4")

### Yarn Type

Milliken-Certified WearOn®

Nylon

### Stain Resist / Soil Release

StainSmart®

### Dye Method

PrintWorks™ Precision Dyeing

### Gauge

1/12

### Stitches Per Inch

9.8

### Tufts

117.6/in<sup>2</sup> (1,821/100 cm<sup>2</sup>)

### Standard Backing

PVC-Free WellBAC® Comfort

Cushion

Available with TractionBack®

### Recycled Content by

#### Total Weight

Standard Backing: 39.3%

Pre-Consumer, 0.0% Post-

Consumer; NSF 140 Platinum

Backing Option: 28.6%

Pre-Consumer, 10.7% Post-

Consumer

### Embodied Carbon

14.37 (kg CO<sub>2</sub>e)/m<sup>2</sup>

### Nominal Total Thickness

0.28" (7.1 mm)

### Nominal Total Weight

89.2 oz/yd<sup>2</sup> (3,024 g/m<sup>2</sup>)

### Flammability (Radiant

Panel ASTM E-648)

≥ 0.45 (Class I)

### Smoke Density (NFPA-

258-T or ASTM-E-662)

≤ 450

### Methanamine Pill Test

(CPSC FF-1-70 or ASTM

D 2859)

Self-Extinguishing

### Lightfastness (AATCC

16E)

≥ 4.0 at 80 Hours

### Crocking (AATCC 165)

≥ 4.0 Wet or Dry

### Static Electricity

(AATCC-134) 20%

R.H., 70° F.

≤ 3.5 KV, Permanent

Conductive Fiber

### Texture Appearance

Retention Rating

(TARR)

Severe Traffic End-Use

Applications

### Recommended

Maintenance

MilliCare® Textile and

Carpet Care

Service Network

### Indoor Air Quality—CRI

Green Label Plus™

GLP0793, Carpet

Category 5Y

### Recommended

Installation Method(s)

Monolithic



MONOLITHIC

## SUSTAINABLE FEATURES

**Elevation** is manufactured with WellBAC® Comfort cushion backing, and is certified NSF-140 Gold with 39.3% pre-consumer recycled content by total product weight.

**Elevation** is also available with our NSF-140 Platinum backing option. All Milliken modular carpets carry Environmental Product Declarations and Health Product Declarations, which contribute to LEED certification. Additionally, Milliken modular carpets carry Declare® transparency labels and comply with the Red List Imperative of the Living Building Challenge.™



**Declare.**



Images in this brochure are approximate for color and pattern scale. Please use actual carpet samples to make your final selections.

### SHOWN ON THE COVER

(Front and Spine) True North in

Satellite. (Back) True North in

Bahada.



Scan to learn more.

Milliken™