

# ENCRYPTION

Linear Code / Block Code



PRICE

Milliken™



**INSPIRED.**

Peer through the complexity to see the digital domain in its multi-faceted beauty — the interplay of shadow and highlight, color and texture within a balanced, yet evolving dimension. Building and receding, the symmetry is accented and syncopated by color.

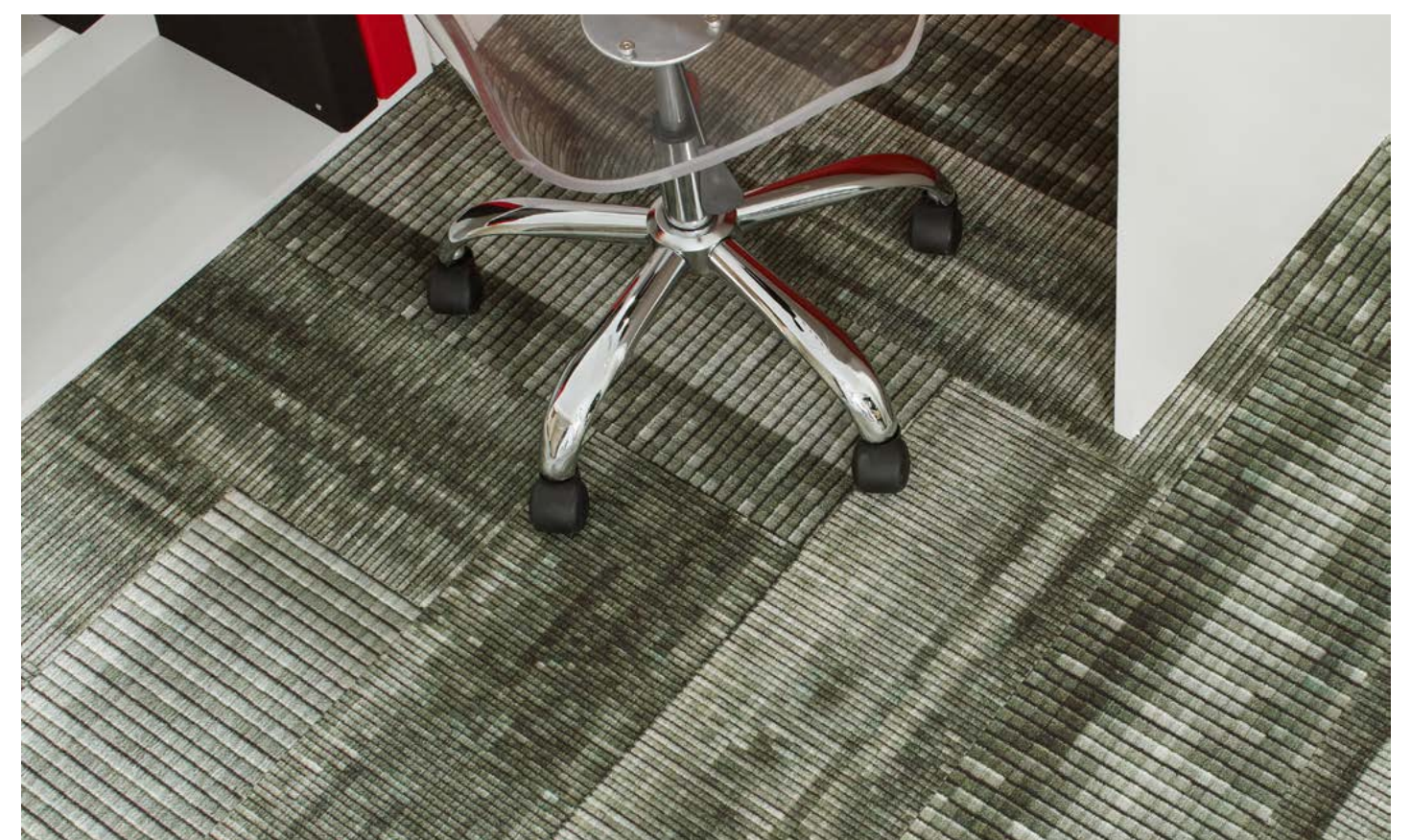




Block Code and Linear Code in Secret (office), 25cm x 1m vertical ashlar random plank, with Midtown Village LVT in Logan (hallway), monolithic tile



Linear Code and Block Code in Misty (random mix), 25cm x 1m herringbone plank



Close-up of Linear Code and Block Code in Misty, herringbone plank



## INSPIRING.

Available in two scales and a wide range of colors from muted to vivid, Encryption is equally at home in large, open areas or a small, focused setting. The two patterns – Linear Code and Block Code – may be used alone or together, in a random or more structured arrangement. The modular plank format increases your creative options and extends the sense of space.

Get more at [millikenfloors.com](http://millikenfloors.com)



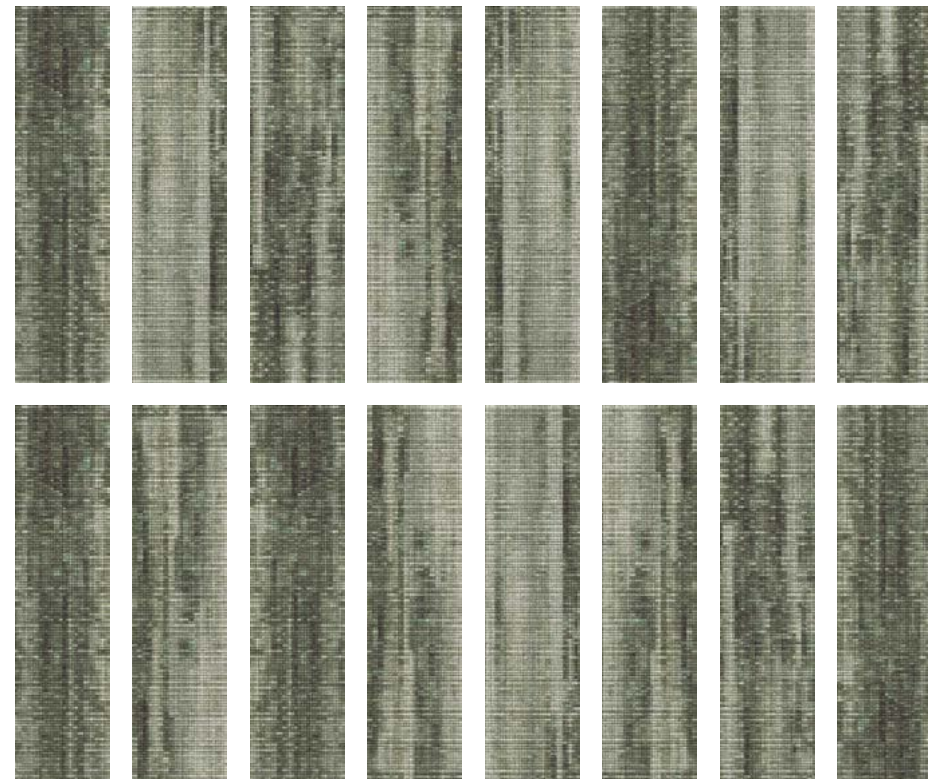


Linear Code and Block Code in Misty (random mix), 25cm x 1m vertical ashlar plank

## Encryption Pattern Repeat

Both patterns in the Encryption collection have a large 16-tile repeat that creates more interest and less repetition on the floor. This also means that a single tile or smaller sample may not fully represent the color as it will appear when installed. Tiles vary in color and value from one to another, and within a single tile. For a better representation of the finished appearance of an installation, consider ordering multiple tiles in your color selection.

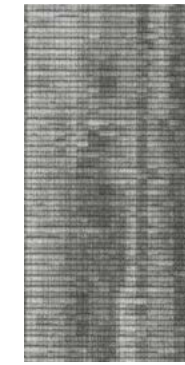
Below is an example of the full 16-tile repeat color variation specific to one colorway - Linear Code in LRC43 Misty.



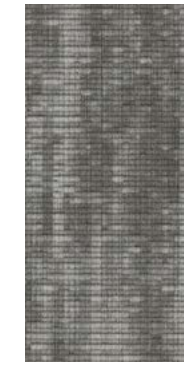
## Colorline shown in Linear Code



LRC152 SECRET  
(Block Code BKC152)



LRC152-5 KEY  
(Block Code BKC152-5)



LRC108 NODE  
(Block Code BKC108)



LRC120-6 DATA  
(Block Code BKC120-6)



LRC97-149 FLOW  
(Block Code BKC97-149)



LRC46-25 QUANTUM  
(Block Code BKC46-25)



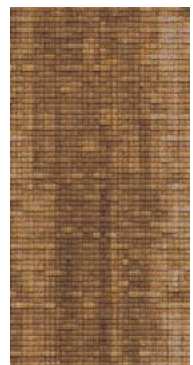
LRC13-5 PASSWORD  
(Block Code BKC13-5)



LRC18-48 SCRAMBLE  
(Block Code BKC18-48)



LRC208 LINK  
(Block Code BKC208)



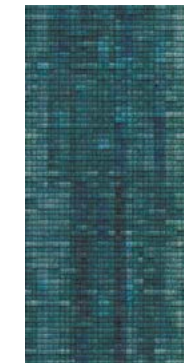
LRC135 BINARY  
(Block Code BKC135)



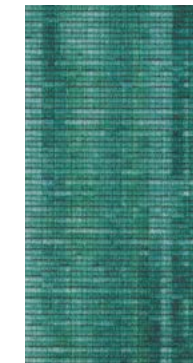
LRC149 PORTAL  
(Block Code BKC149)



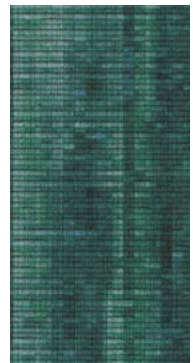
LRC158-51 PLATFORM  
(Block Code BKC158-51)



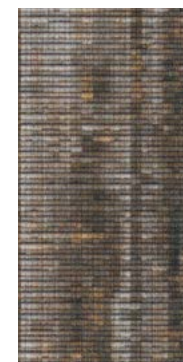
LRC125-161 WATERMARK  
(Block Code BKC125-161)



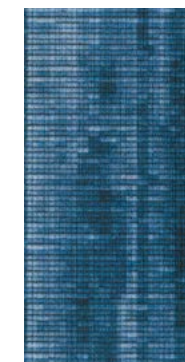
LRC200 CIPHER  
(Block Code BKC200)



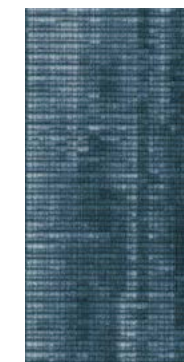
LRC201 TEMPEST  
(Block Code BKC201)



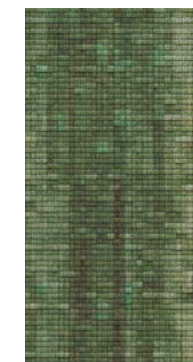
LRC77-6-10 PROXY  
(Block Code BKC77-6-10)



LRC228 SKIPJACK  
(Block Code BKC228)



LRC126 STREAM  
(Block Code BKC126)



LRC203 ACCESS  
(Block Code BKC203)



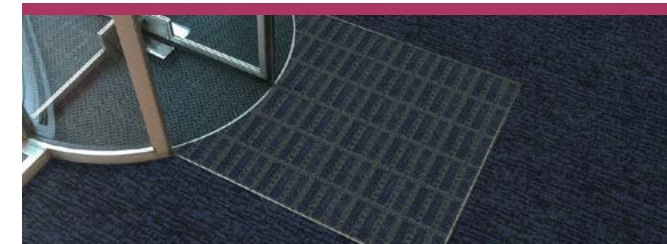
LRC43 MISTY  
(Block Code BKC43)



# Complete Flooring Solutions



Milliken Floor Covering offers products and expertise in all areas of your commercial spaces, including high-performance entryway systems, broadloom & modular carpet, luxury vinyl tile, and milliCare®. Simplify your flooring needs with a trusted partner that will let you enjoy creating a great space without having to worry about everything else.



## Entry Systems

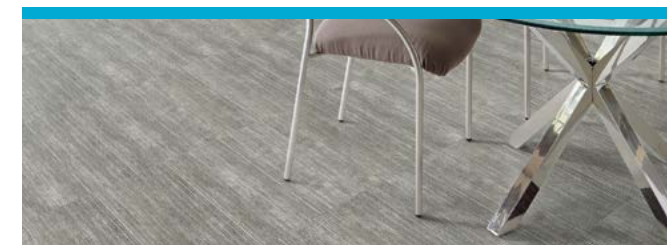
The OBEX™ brand of products offers highly effective, comprehensive modular entry solutions designed as a three-zone barrier system to prevent dirt and moisture from entering the building.

Available in coordinated colors and patterns, OBEX™ entry products are engineered to increase the functionality of a building's entrance without forsaking elements of design or aesthetic. Simple and easy to work with, OBEX™ offers entry systems that can be recessed or surface-mounted as well as exterior and interior applications.



## Broadloom & Modular Carpet

Milliken's broadloom and carpet tile incorporate the latest innovations in tufting and dyeing technology, achieving unique looks and excellent performance. With our Color Reference system, coordinating multiple products across a single project is a snap; whether it's carpet, LVT, or entry systems. All carpet tile products have cushion backing for an extended lifespan, as well as ergonomic and environmental benefits. Broadloom carpet also has cushion-back options, and all are standard with StainSmart®, a proprietary treatment applied to Milliken carpets to repel and protect against stains and enhance soil release.



## Luxury Vinyl Tile

From natural looks of wood and stone to more modern textures and abstracts, Milliken's collection of Luxury Vinyl Tile flooring creates new options for a commercial or hospitality interior. Our simple-to-search Color Reference system provides easy coordination of the LVT options to modular and broadloom carpets. From carpet tile to broadloom to planks to LVT, Milliken provides durable and elegant options for your project.



## milliCare®

We care for the environment with products and a method that improve Indoor Air Quality and reduce water consumption and your carbon footprint. We care about you professionally by saving you time through customized service plans for your entire space provided for by our franchise network. You work healthier and live healthier, and the planet is a better place because of it. We can bring that same quality of care and service to you wherever you are. milliCare takes caring for your flooring and textiles off your to-do list, which means that you get to skip right to the part where you get to lean back, put your hands behind your head, and be a hero for keeping a beautifully cleaned space.

# ENCRYPTION

## Linear Code / Block Code

Images in this brochure are approximate for color and pattern scale. Please use actual carpet samples to make your final selections.

Have you seen our other collections? Visit us online today.



District LVT



Formwork



Shift LVT



Moraine



### Construction

Tufted, Textured Loop

### Tile Size

25 cm x 1 m (9.8" x 39.4")

### Yarn Type

100% Milliken-Certified WearOn®  
Nylon Type 6,6

### Stain Repel / Stain Resist / Soil Release

StainSmart®

### Tufted Face Weight

15 oz/yd<sup>2</sup> (509 g/m<sup>2</sup>)

### Finished Pile Height

0.13" (3.3 mm)

### Finished Pile Thickness

0.08" (2.03 mm)

### Average Density

6,541

### Standard Backing

PVC-Free Underscore™ ES Cushion  
Underscore™ is available with TractionBack®

### Texture Appearance Retention Rating (TARR)

Severe

### Recommended Installation Method



PLANKS

### TractionBack®

Simplify your modular installation with Milliken's patented TractionBack®, an innovative backing system that is faster, more cost efficient, and environmentally superior to wet adhesives and peel-and-stick carpet tile.



This cushion-back carpet tile product is covered by one or more patents, published applications and/or patents pending. Specifications are subject to normal manufacturing tolerances and may be changed without prior notice.

### Growing greener for over 100 years.

This product has a UL® Environment 3<sup>rd</sup> party verified Environmental Product Declaration (EPD). A copy of the EPD is available online at [milliken地毯.com/epd](http://milliken地毯.com/epd) and [productguide.ulenvironment.com](http://productguide.ulenvironment.com).

Customer Concierge 800.824.2246 | [millikenfloors.com](http://millikenfloors.com)  
© 2017 Milliken & Company | Design © Milliken & Company | Made in the USA

Cover image: *High-rise office buildings in Hong Kong*,  
by hfzimages. © 2017 Shutterstock

27100XXXX  
CP 0157