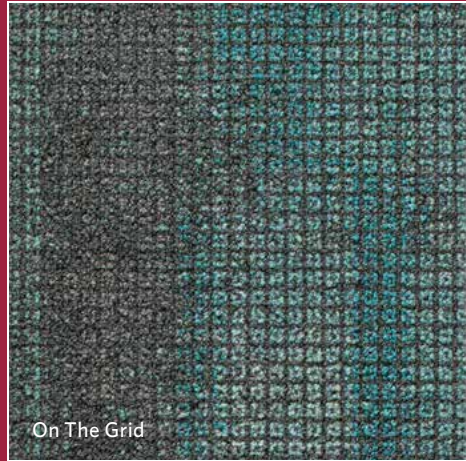


LATITUDE

On The Grid



Milliken™

150
years of *Milliken*.



INSPIRED. INSPIRING

Perspective gives meaning and shapes our consideration of the world around us. From great heights, objects change and become small intricate details or massive volumes that guide us. At times, they merge and morph to create a new reality. Latitude explores new perspectives based on our physical point of view. Navigate a new idea of geometrics brushed and softened by shifting organics.

On The Grid in Bermuda and Hemisphere, 25cm x 1m planks, vertical ashlar installation



On The Grid in Sector, 25cm x 1m planks, vertical ashlar installation



Latitude offers 32 colors; 16 neutrals and 16 companion accents. Each accent includes the neutral coordinate color as part of the design. Use this coordination to create a floor as shown on page 3, or allow your favorite accent to make a statement on its own. For more details, view the colorline and begin your inspiration.

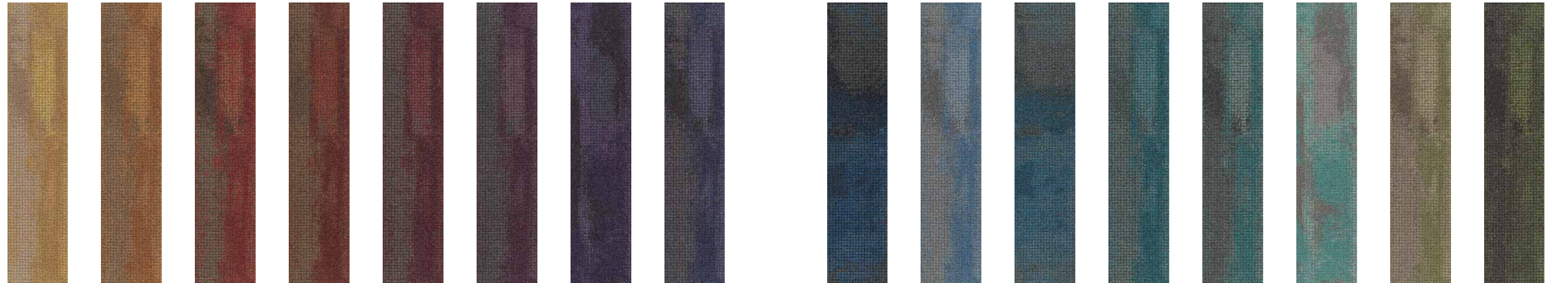
On The Grid in Hinterland, 25cm x 1m planks, vertical ashlar installation



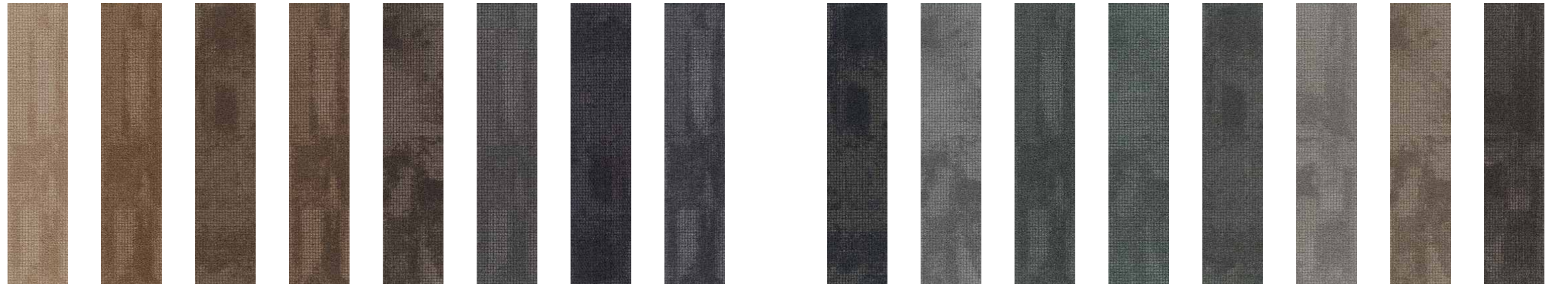
On The Grid in Moraine, Backshore and Legend, 25cm x 1m planks, herringbone Installation

Colorline

The 16 neutrals (bottom row) and 16 coordinating accents (top row) of Latitude provide a ready-to-use color palette for your next project. Use a single color or add its coordinate with the same neutral background to make a more bold floor. Creativity soars when you mix your favorite combination from the 32 colors in a variety of plank installation methods.



OTG134-65-76-4 CAPRICORN OTG134-128-77-176 BUTTE OTG102-179-96-69 SECTOR OTG102-60-120-143 AFRICAN PLATE OTG110-179-178-68 PIEDMONT OTG137-10-44 SEA LEVEL OTG38-195-131-119 ORIENTATION OTG194-19-119-154 BALTIC OTG183-123-27-93 NAUTICAL MILE OTG157-170-13-108 POLAR ICE OTG159-199-106-79 PACIFIC REALM OTG140-201-51-46 MEDITERRANEAN OTG161-200-53-78 BERMUDA OTG172-161-97-171 GREENWICH OTG103-45-94-41 HINTERLAND OTG141-58-83 EQUATOR



OTG76-4 MERIDIAN OTG77-176 BACKSHORE OTG96-69 MORAINÉ OTG120-143 LEGEND OTG178-68 TOPO OTG10-44 SHORELINE OTG131-119 BERING OTG119-154 HACHURE OTG27-93 GIBRALTAR OTG13-108 ARCTIC ZONE OTG106-79 TIME LINE OTG51-46 NAVIGATION OTG53-78 HEMISPHERE OTG97-171 CASPIAN OTG94-41 TRANSIT OTG58-83 NEATLINE

ADVANTAGES OF MILLIKEN CARPET TILE



Cushion Backing

Comfort Plus® & Underscore™ are Milliken's latest generation cushion backing systems and are standard on Milliken modular carpet products. In addition to providing superior underfoot comfort and significantly improving the carpet's wear performance, these cushion backings also offer ergonomic, acoustic, and environmental benefits.

Milliken cushion backing protects the carpet face from wear and can extend the carpet's life by up to 40%. Acting like an insulating shock absorber, Milliken cushion backings protect against wear, improve appearance retention and enhance comfort and safety. Cushion backing also helps Milliken carpets earn test ratings of Severe in the TARR system.

Milliken cushion-backed carpet tiles are unmatched in moisture management. They stop liquids at the surface and wick moisture away from the sub-floor thereby reducing conditions for mold and mildew growth. By allowing high levels of moisture to be transported through the tile, Milliken modular tiles can handle water vapor emissions up to 85% relative humidity. This unique feature eliminates one less worry about carpet in a high-humidity environment.

Cushion Improves Acoustics

Much emphasis is placed on the need to reduce unwanted noise in corporate and public spaces. Reducing noise levels can improve comfort, well-being, the ability to concentrate and yield higher performance and productivity. Milliken cushion-backed tiles achieve an improvement in sound absorption performance by absorbing sounds across a wide range of frequencies including those most associated with human speech. Milliken's cushioned carpet tiles absorb up to 50% more noise than hard-backed carpets and up to 12X more than hard surface and rubber flooring. Better yet, the new LEED v4 rewards designers for providing spaces that facilitate better communications by offering up to 2 LEED points. Clearly, acoustics matter.



StainSmart®

StainSmart is a proprietary treatment applied to Milliken modular carpets to provide Stain Repel, Stain Resist and Soil Release characteristics. This treatment provides state-of-the-art protection against penetrating stains and soil. It's a dual action technology that enables liquid and oil-based spills to bead up and be easily removed from the carpet. The treatment becomes an inherent part of the carpet so it's durable over years of use, even in high traffic.

Stain Repel: StainSmart allows many liquid spills to be blotted and removed easily before they can penetrate beyond the carpet surface.

Stain Resist: This chemistry blocks the dye sites of the nylon fiber, lessening the ability of a stain to bond with the fiber.

Soil Release: Prevents soil from adhering to or imbedding in the fiber surface and enhances the efficiency of soil removal when proper cleaning techniques are followed.

Milliken warrants that carpet treated with StainSmart will resist soiling and staining during the lifetime* of the carpet. Proper maintenance is vital to the long-term effectiveness of the StainSmart treatment. Soaps used in wet-cleaning processes, especially spin bonnet, can cause rapid resoiling and effectively negate the protection built into the product. Milliken recommends the MilliCare® Textile and Carpet Care Service Network.

*Lifetime is defined as the period of time that the original purchaser of the carpet chooses to keep the carpet on the floor at the original installation site.



Sustainable

At Milliken, sustainability is core to our culture. We believe a healthy enterprise and healthy earth are vitally linked. We care about and respect each other, our customers, and the world we share. While we hold ourselves accountable to the highest ethical standards, we derive our greatest satisfaction from creating innovations that help solve the world's problems at a human level—adding value to people's lives, improving health and safety, and making this world sustainable.

Milliken has also demonstrated a commitment to transparency by disclosing the components of our commercial carpet tile products through Declare®, a voluntary labeling program and database operated by the International Living Future Institute™, and complies with the Red List Imperative of the Living Building Challenge™.

Examples of Our Commitment:

- Zero waste to the landfill from our Milliken US carpet manufacturing facilities since 1992.
- 46% of the energy used in the manufacture of our carpet is renewable through company owned hydroelectric facilities and local landfill methane gas harvesting.
- Milliken Carpet tile products have Environmental Product Declarations (EPD's) that are third party certified by Underwriters Laboratory (UL).
- All Milliken Carpet products are free of the 15 Red List chemicals defined in the Living Building Challenge.
- All global Milliken products are third-party certified carbon neutral by the Leonardo Academy. Carbon dioxide created in the manufacturing of all Milliken products globally is offset through company owned sustainably managed forests and green energy producing facilities.
- Product Life Cycle Assessments (LCA) are used for New Product Development. Milliken has used the Design for Environment (DfE) process for our commercial carpet products since 2002.
- Our polyurethane backed cushion increases the life of carpet more than 40%.
- All Milliken Carpet products are 3rd party certified NSF-140 Gold or Platinum.
- All U.S. plants are certified as OSHA VPP STAR Sites.
- All carpet manufacturing sites are ISO-14001 Certified—the highest global standard for environmental responsibility.
- First US carpet manufacturer to obtain carpet manufacturing certification for the ISO 9000 Series Standard for quality.



LATITUDE

On The Grid

Have you seen our other collections? Visit us online today.



Arcadia



Color Field



Identity One



LVT



Construction

Tufted, Textured Loop

Tile Size

25 cm x 1 m (9.8" x 39.4")

Yarn Type

Milliken-Certified WearOn® Nylon
Type 6,6

Stain Repel / Stain Resist / Soil Release

StainSmart®

Tufted Face Weight

20 oz/yd² (678 g/m²)

Finished Pile Height

0.11" (2.79 mm)

Average Density

7,793

Standard Backing

PVC-Free Comfort Plus® ES Cushion

Texture Appearance Retention Rating (TARR)

Severe

Recommended Installation Method



PLANKS



This cushion-back carpet tile product is covered by one or more patents, published applications and/or patents pending. Specifications are subject to normal manufacturing tolerances and may be changed without prior notice.

Growing greener for over 100 years.

This product has a UL® Environment 3rd party verified Environmental Product Declaration (EPD). A copy of the EPD is available online at millikencarpet.com/epd and productguide.ulenvironment.com.

Customer Concierge 800.824.2246 | millikenfloors.com
© 2015 Milliken & Company | Design © Milliken & Company | Made in the USA

Cover image: *Topographic map background concept*,
by Juli Hansen. © 2015 Shutterstock

2710025601
CP 0815