



## LINEATION

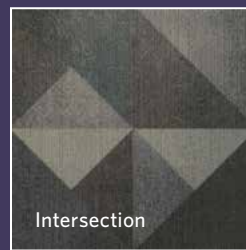
Direct Route / Three Corners  
Intersection / Triangular Path



Direct Route



Three Corners



Intersection



Triangular Path



PRICE

Milliken™

150

years of Milliken

## INSPIRED.

The gesture of a pen, the flourish of a brush; each brings distinct identity to the quality of lines. Forms emerge through strict boundaries or intersections, where they blend seamlessly into one another. It is at these moments of meeting where paths are determined and new possibilities surface. Will it be a course of strict discipline or meaningful wander?



Three Corners in Base Tone, monolithic tile installation



Direct Route in Base Tone, monolithic tile installation



Intersection in Base Tone, monolithic tile installation

## INSPIRING.

The Lineation Collection creates unique shapes through a combination of broad color gradations and disciplined geometry. Four patterns feature refined lines that form precise iterations of the isosceles triangle or meander slightly as they take shape. Brought to life through high-resolution Millitron® patterning, this all-loop, severe wear-rated construction provides an approachable toolset to make a statement or redefine classic sophistication through flooring.

Intersection, Three Corners, and Direct Route in Base Tone (left to right), monolithic tile installation



Triangular Path in Shell Brown with Direct Route in Base Tone, monolithic tile installation

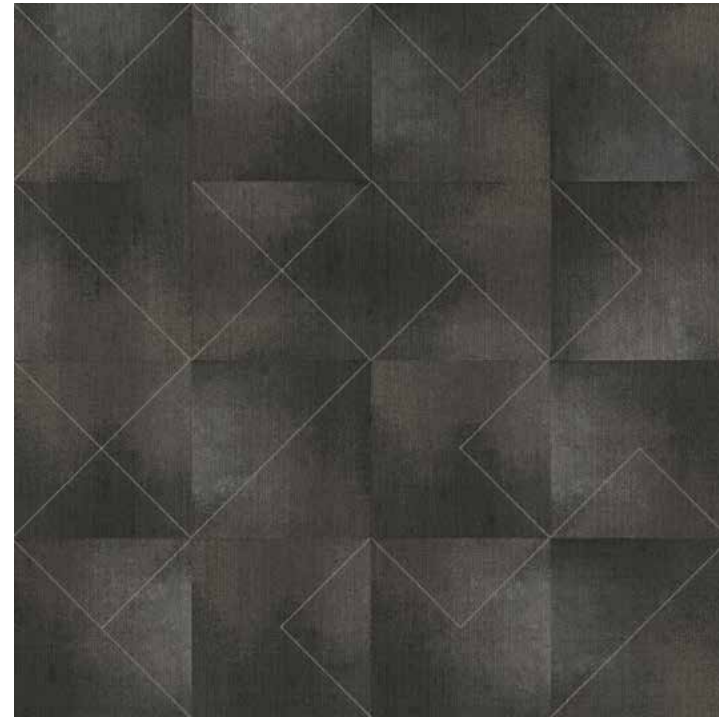


Triangular Path in Morning Blend (rug) with Slate LVT in SLT121 (field), monolithic tile installation

## Coordination Through Color Families and Pattern Scale

The Lination color line expands the concept of color families with pre-defined combinations of complementary hues. This color family approach offers the ability to quickly coordinate patterns to create custom floors with standard materials. Use color families for time-sensitive projects, or make use of the entire line for an unexpected palette.

The 16 colors of Triangular Path have companions in Direct Route, Three Corners and Intersection. These companions share two or three standard colors from Triangular Path to easily enable creative floor designs through both color and pattern scale.



Triangular Path's 16-Tile Repeat (TGP13-79 Peppercorn)

For instance, the Dungaree, Gulf Breeze and Pencil Grey colors in Triangular Path coordinate directly to the Backlight color family of Direct Route, Three Corners and Intersection, which explore scales of the isosceles triangle. Create a distinct monolithic visual with a singular pattern and color. Or, intermix patterns within color families to create movement and intrigue. The pattern combinations of Lination inspire new perspectives on the interaction of lines and plane—and the shapes they can create. Triangular Path also coordinates color-for-color with Watercolor Lesson in the Naturally Drawn collection for even more creative options.

### Triangular Path



Dungaree

Gulf Breeze

Pencil Grey

### Direct Route



Backlight

## Triangular Path

Colorline



TGP21-12 ANTIQUE SAND



TGP21-124 VINTAGE TAUPE



TGP73-153 BLUE DAWN



TGP73-19 HARBOR GREY



TGP15-114 MORNING BLEND



TGP26-102 CANYON RED



TGP158-139 DUNGAREE



TGP25-132 PENCIL GREY



TGP144-83 SPOTTED DOVE



TGP59-145 TINSMITH



TGP139-172 GULF BREEZE



TGP132-46 PACIFIC SLOPE



TGP118-165 SHELL BROWN



TGP13-79 PEPPERCORN



TGP45-21 LIME PEEL



TGP64-21 TOPIARY

# Direct Route

6-Tile Color Families



DIR124-21-15 VALUE



DIR165-13-118 BASE TONE



DIR73-19 AQUATINT



DIR139-25-152 BACKLIGHT



DIR88-87-64 EARTH



Direct Route in Aquatint, monolithic tile installation



Direct Route in Aquatint, random turn tile installation

## Direct Route

6-Tile Color Families



DIR124-21-15 VALUE



DIR165-13-118 BASE TONE



DIR73-19 AQUATINT



DIR139-25-152 BACKLIGHT



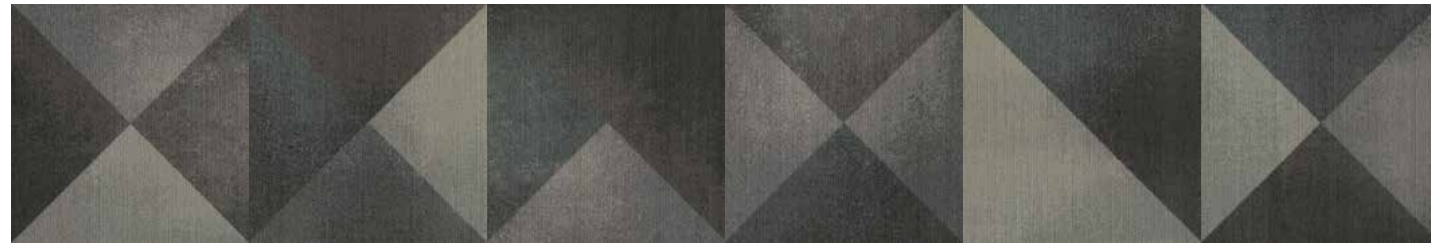
DIR88-87-64 EARTH

## Three Corners

6-Tile Color Families



THC124-21-15 VALUE



THC165-13-118 BASE TONE



THC73-19 AQUATINT



THC139-25-152 BACKLIGHT



THC88-87-64 EARTH

## Intersection

6-Tile Color Families



INT124-21-15 VALUE



INT165-13-118 BASE TONE



INT73-19 AQUATINT



INT139-25-152 BACKLIGHT



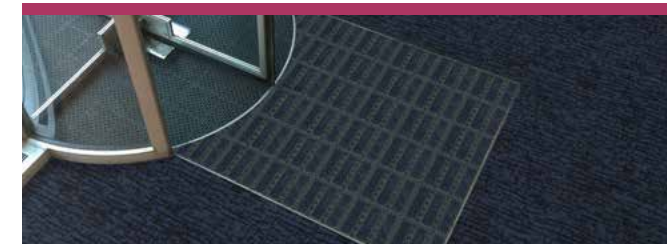
INT88-87-64 EARTH



# Complete Flooring Solutions



Milliken Floor Covering offers products and expertise in all areas of your commercial spaces, including high-performance entryway systems, broadloom & modular carpet, luxury vinyl tile, and milliCare®. Simplify your flooring needs with a trusted partner that will let you enjoy creating a great space without having to worry about everything else.



## Entry Systems

The OBEX® brand of products offers highly effective, comprehensive modular entry solutions designed as a three-zone barrier system to prevent dirt and moisture from entering the building.

Available in coordinated colors and patterns, OBEX® entry products are engineered to increase the functionality of a building's entrance without forsaking elements of design or aesthetic. Simple and easy to work with, OBEX® offers entry systems that can be recessed or surface-mounted as well as exterior and interior applications.



## Broadloom & Modular Carpet

Milliken's broadloom and carpet tile incorporate the latest innovations in tufting and dyeing technology, achieving unique looks and excellent performance. With our Color Reference system, coordinating multiple products across a single project is a snap; whether it's carpet, LVT, or entry systems. All carpet tile products have cushion backing for an extended lifespan, as well as ergonomic and environmental benefits. Broadloom carpet also has cushion-back options, and all are standard with StainSmart®, a proprietary treatment applied to Milliken carpets to repel and protect against stains and enhance soil release.



## Luxury Vinyl Tile

From natural looks of wood and stone to more modern textures and abstracts, Milliken's collection of Luxury Vinyl Tile flooring creates new options for a commercial or hospitality interior. Our simple-to-search Color Reference system provides easy coordination of the LVT options to modular and broadloom carpets. From carpet tile to broadloom to planks to LVT, Milliken provides durable and elegant options for your project.



## milliCare®

We care for the environment with products and a method that improve Indoor Air Quality and reduce water consumption and your carbon footprint. We care about you professionally by saving you time through customized service plans for your entire space provided for by our franchise network. You work healthier and live healthier, and the planet is a better place because of it. We can bring that same quality of care and service to you wherever you are. milliCare takes caring for your flooring and textiles off your to-do list, which means that you get to skip right to the part where you get to lean back, put your hands behind your head, and be a hero for keeping a beautifully cleaned space.

# LINEATION

Direct Route / Three Corners  
Intersection / Triangular Path

Images in this brochure are approximate for color and pattern scale. Please use actual carpet samples to make your final selections.

Have you seen our other collections? Visit us online today.



Formwork



Journal



Surface Study



Whale Song



## Construction

Tufted, Textured Loop

## Tile Size

50 cm x 50 cm (19.7" x 19.7")

## Yarn Type

Milliken-Certified WearOn® Nylon  
Type 6,6

## Stain Repel & Resist / Soil Release

StainSmart®

## Tufted Face Weight

15 oz/yd<sup>2</sup> (509 g/m<sup>2</sup>)

## Finished Pile Height

0.13" (3.30 mm)

## Finished Pile Thickness

0.08" (2.03 mm)

## Average Density

6,541

## Standard Backing

PVC-Free Underscore™ ES Cushion  
Underscore™ is available with TractionBack®

## Texture Appearance Retention Rating (TARR)

Severe

## Recommended Installation Method



MONOLITHIC

## TractionBack®

Simplify your modular installation with Milliken's patented TractionBack®, an innovative backing system that is faster, more cost efficient, and environmentally superior to wet adhesives and peel-and-stick carpet tile.



This cushion-back carpet tile product is covered by one or more patents, published applications and/or patents pending. Specifications are subject to normal manufacturing tolerances and may be changed without prior notice.

## Growing greener for over 100 years.

This product has a UL® Environment 3<sup>rd</sup> party verified Environmental Product Declaration (EPD). A copy of the EPD is available online at [millikencarpet.com/epd](http://millikencarpet.com/epd) and [productguide.ulenvironment.com](http://productguide.ulenvironment.com).

Customer Concierge 800.824.2246 | [millikenfloors.com](http://millikenfloors.com)  
© 2015 Milliken & Company | Design © Milliken & Company | Made in the USA

Cover image: *Line Crag*, by Roy Acosta.  
© 2016 Milliken & Company

2710026543  
CP 0416