

# LINEN 2.0



Linen 2.0



Milliken™



## INSPIRED. INSPIRING.

A currency in ancient Egypt. A flax thread defining a straight line. Appreciated for its exceptional coolness and freshness as apparel in hot climates, classic linen has earned a sense of sophisticated simplicity throughout its history. Tone-on-tone. Texture-on-texture. Dimension created from subtlety. Classic, sophisticated, the linen-inspired pattern proves once again, there is more to it than first meets the eye.



Linen 2.0 in Linsey



Linen 2.0 in Linsey, monolithic tile installation



Linen 2.0 in Lockram, monolithic tile installation



Linen 2.0 in Marcella, monolithic tile installation

Colorline images shown are cropped for greater pattern detail and represent only a part of full a 1m x 1m tile.



LIN015 LINEAR B



LIN121 LINSEED



LIN060 CAMLET



LIN010 MURREY



LIN077 FLAX



LIN124 CAMBRAI



LIN145 HELEN



LIN083 LINSEY



LIN096 CARTHAGE



LIN069 REED



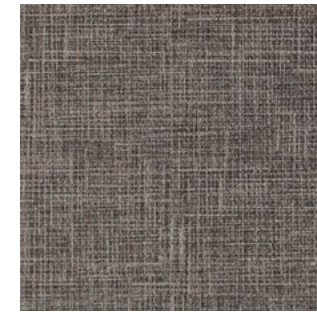
LIN059 CAMBRESINE



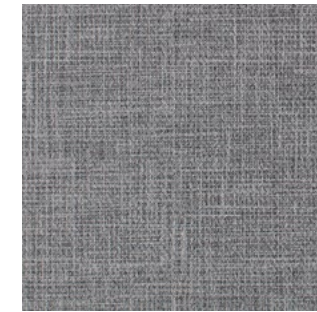
LIN097 NEITH



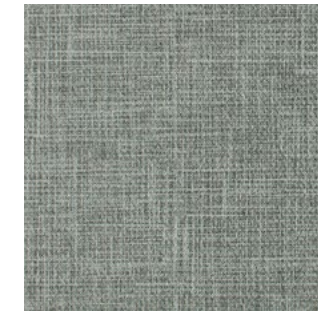
LIN120 SINDON



LIN067 BARRAS



LIN005 LISBURN



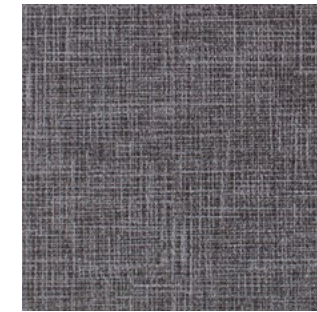
LIN043 PENELOPE



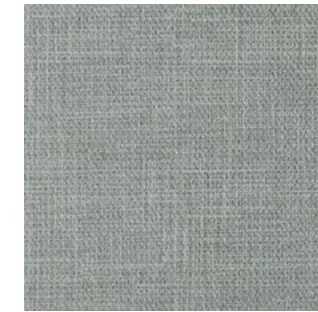
LIN079 CROMMELIN



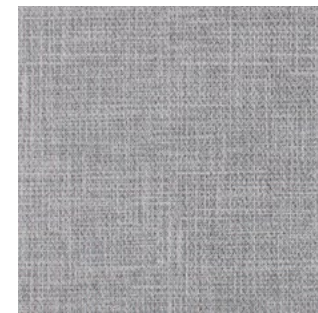
LIN046 LOCKRAM



LIN118 VALLEY OF THE NILE



LIN101 WESTPHALIA



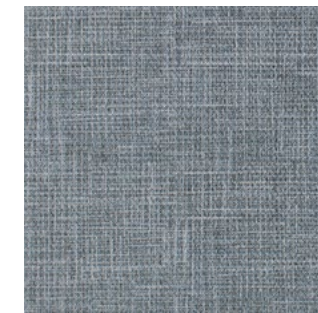
LIN108 CALYPSO



LIN171 BELFAST



LIN107 CRETE



LIN106 TUNIC



LIN075 SIRCE



LIN122 PYLOS



LIN071 ISLE OF BUGEN



LIN081 RAMSES



LIN087 LICHEN



LIN094 MARCELLA



LIN023 BAST



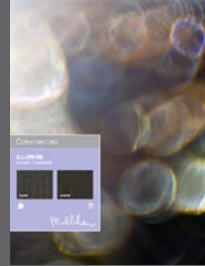
LIN093 ISIS

# LINEN 2.0

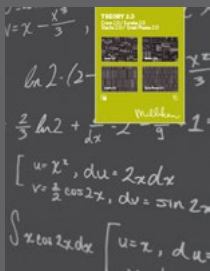
Have you seen our other collections? Visit us online today.



Craft



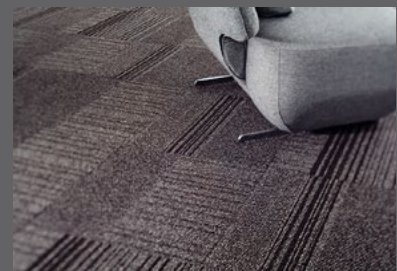
Illumine



Theory 2.0



Yarn Storm



## Construction

Tufted, Textured Loop

## Tile Size

1 m x 1 m (39.4" x 39.4")

## Yarn Type

Milliken-Certified WearOn® Nylon  
Type 6,6

## Stain Repel / Stain Resist / Soil Release

StainSmart®

## Tufted Face Weight

20 oz/yd<sup>2</sup> (678.1 g/m<sup>2</sup>)

## Finished Pile Height

0.11" (2.8 mm)

## Average Density

6,583

## Standard Backing

PVC-Free Comfort Plus® ES Cushion  
Comfort Plus® is available with TractionBack®

## Texture Appearance Retention Rating (TARR)

Severe

## Recommended Installation Methods



VERTICAL  
ASHLAR



MONOLITHIC

## TractionBack®

Simplify your modular installation with Milliken's patented TractionBack®, an innovative backing system that is faster, more cost efficient, and environmentally superior to wet adhesives and peel-and-stick carpet tile.

This cushion-back carpet tile product is covered by one or more patents, published applications and/or patents pending. Specifications are subject to normal manufacturing tolerances and may be changed without prior notice.



**Growing greener for over 100 years.**  
Visit [millikencarpet.com](http://millikencarpet.com) for more information.