



**MOMENT**

*Milliken*<sup>®</sup>



**INSPIRED. INSPIRING.**

As each day unfolds, it reveals a series of moments captured in our mind like art in memory. These images are etched in a visual gallery waiting to be retrieved.

*"All that is important is this one moment in movement. Do not let it slip away unnoticed."*

—Martha Graham



The Moment Collection is a journey through place and time where life is captured forever in our memory, awaiting our recall. These lasting images captured and lovingly nurtured in the mind's eye evoke emotion and allow the full experience of memorable moments in our lives.





## PHOTOGRAPHY



On The Avenue Rug & Skinny Stripe Light in Grayscale

### MOMENT

Influenced by this concept of 'art in memory', photography plays a key role in the Moment Collection. Photographic images become the visual and emotional voice of the collection. Each image was carefully selected to reflect the energy, dramatic impact and scale which occurs naturally in a large public space. As the nuances of the collection are revealed, the movement of line and shape bring the beauty of motion to life in an almost cinematic way for each of the four designs—Swept Away, On the Avenue, Saturday Morning and City Escape.

A wide range of varying gray scales keeps the focus on the movement within the design and allows the viewer to create their own visual journey. A journey inspired by a moment in life.





INSPIRED

7



8

#### ON THE AVENUE

The solitude of walking in the rain is the essence of this design. Even though many share the city street, they are alone in their thoughts. The rain becomes the barrier between passersby and other distractions; but it can also aid in mental concentration and clarity that may be diminished on a clear day. The silhouettes within *On the Avenue* offer a modern feel and also introduce characters to the piece - among them a mysterious woman and a young couple.

*"Some people walk in the rain. Others just get wet."*  
—Roger Miller

9



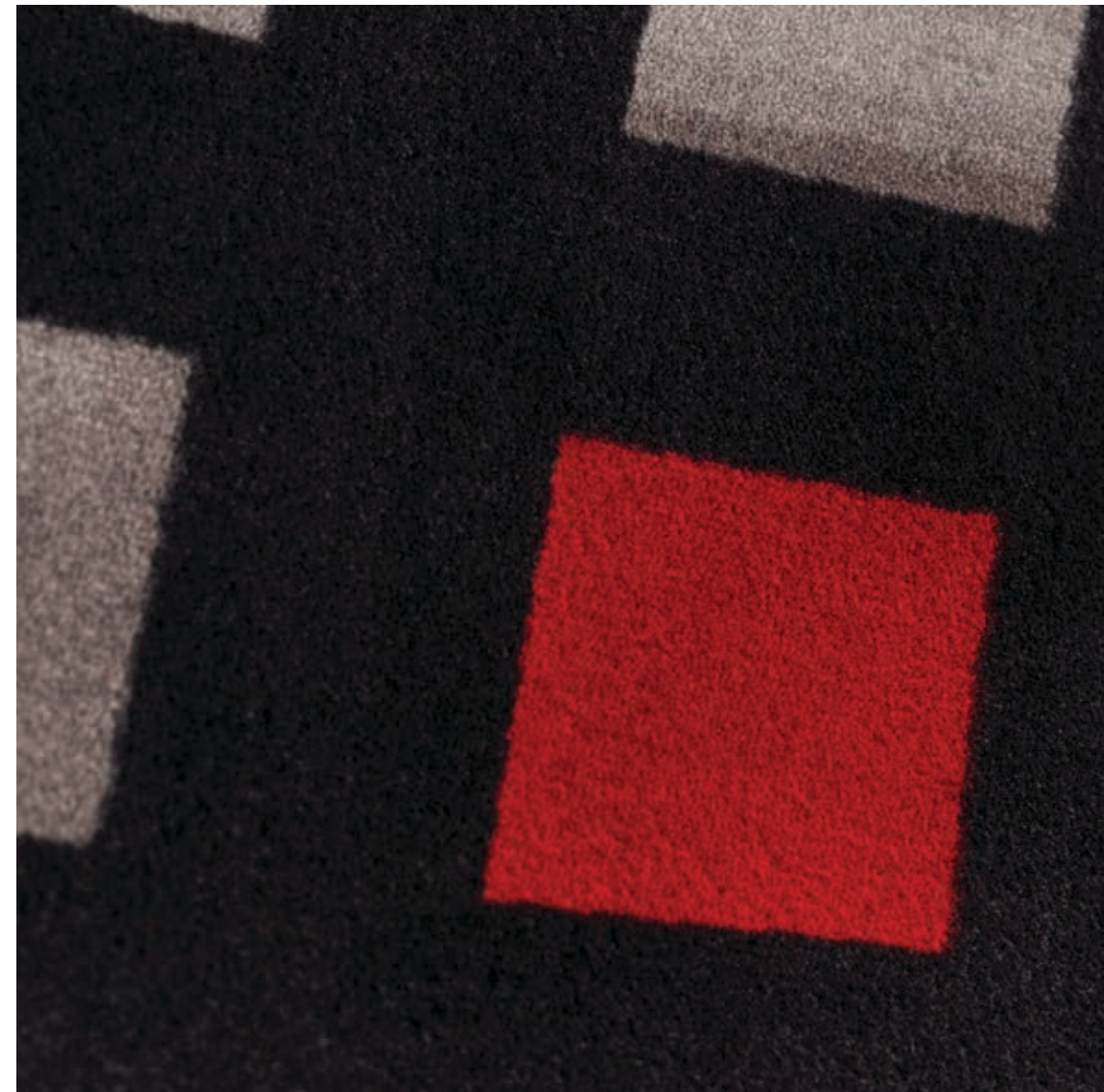


Transitions Large Stripe in Grayscale



On The Avenue Rug Random & Skinny Stripe Dark in Grayscale





On The Avenue Runner with Accent in Grayscale



On The Avenue Rug in Grayscale



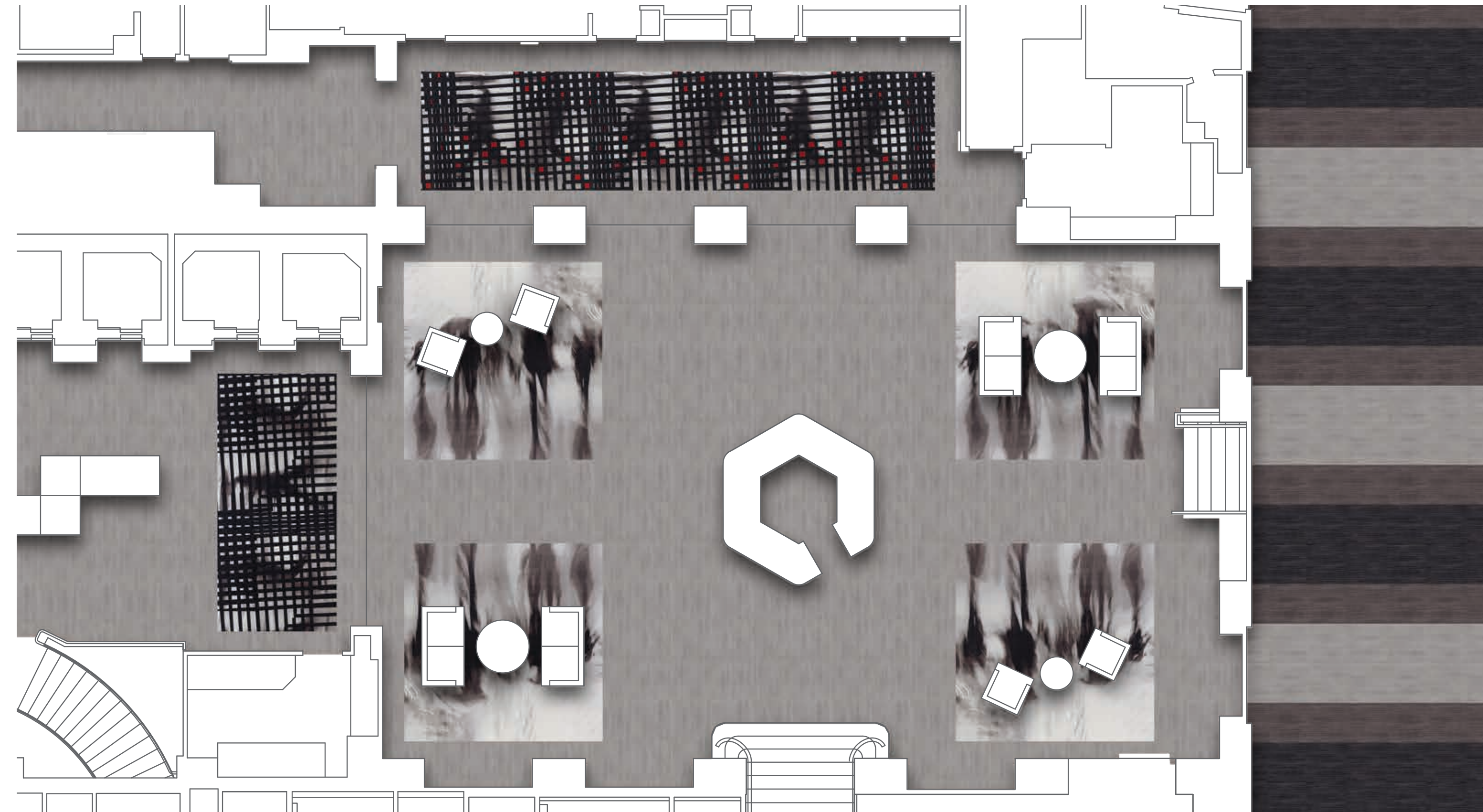
On The Avenue Rug/Runner in Grayscale



On The Avenue Runner with Accent in Grayscale

## PHOTO-GRAPHIC

The collection's feature pieces are the photographic images. However, some of the companion designs take on a different approach, allowing the artwork to shift to a secondary role as it merges with the graphic layer or becomes just the graphic. The last elemental change is the addition of a single color accent. The four basic design forms allow for different levels of customization and space planning.





ON THE AVENUE



On The Avenue Runner with Accent in Grayscale



RUG

Order #: 00332518  
 Random: 00400629  
 Rug Size:  
 180.00" W x 180.00" L

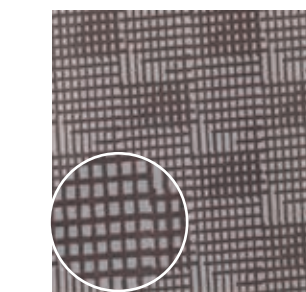
1	2	3	4	5
6	7	8	9	10
11	12	13	14	15
16	17	18	19	20
21	22	23	24	25



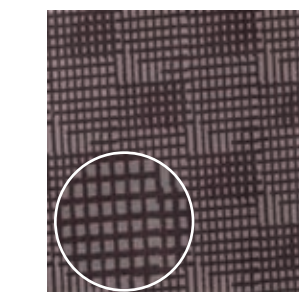
RUG/RUNNER

Order #: 00314565  
 Length Pattern repeat:  
 108.00" W x 144.00" L

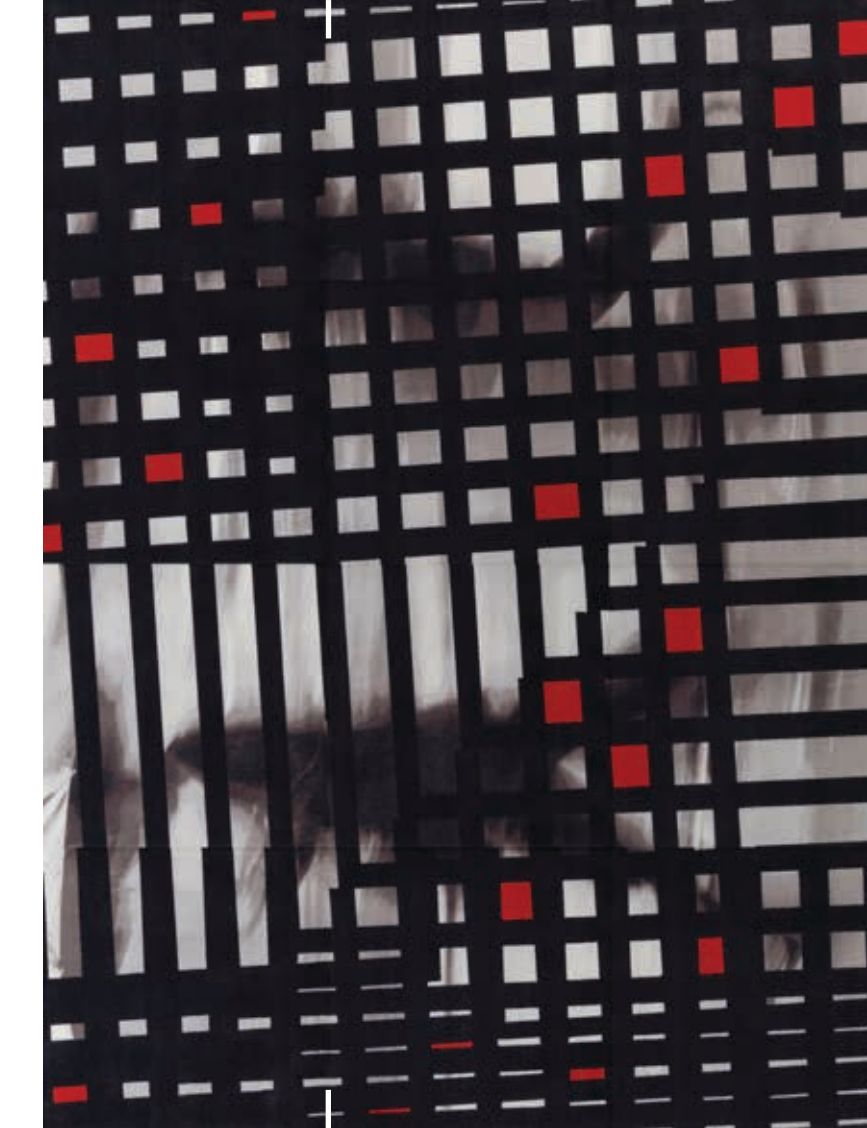
1	2	3
4	5	6
7	8	9
10	11	12



GRAPHIC—LIGHT  
 Order #: 00331426  
 Pattern repeat:  
 36.00" W x 36.00" L



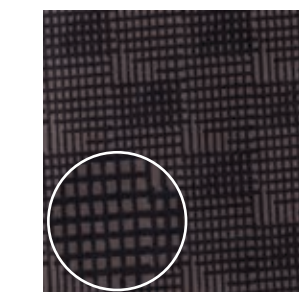
GRAPHIC—MEDIUM  
 Order #: 00331427  
 Pattern repeat:  
 36.00" W x 36.00" L



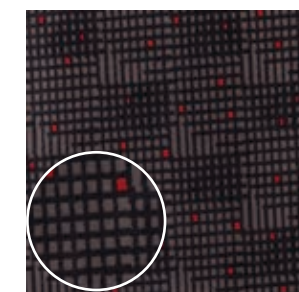
RUNNER WITH ACCENT  
 Available in 6' & 9' widths

Order #: 00352724  
 Length Pattern repeat:  
 72.00" W x 144.00" L  
 Order #: 00326087  
 Length Pattern repeat:  
 108.00" W x 144.00" L

1	2	3
4	5	6
7	8	9
10	11	12



GRAPHIC—DARK  
 Order #: 00331428  
 Pattern repeat:  
 36.00" W x 36.00" L



GRAPHIC—WITH ACCENT  
 Order #: 00332109  
 Pattern repeat:  
 36.00" W x 36.00" L



## SWEPT AWAY

Dance, an art form that connects the body with the soul, is the focus of this design. Capturing the mesmerizing effect that movement has in creating unforgettable moments, Swept Away follows the natural beauty of dancers flowing organically across the floor. Because of the unique placement of color, the body shapes blur almost disappearing from the observer's eye only to reappear again. The stark contrast of black and white shades in the costumes offer a powerful and connecting effect within the design.

*"There are movements which impinge upon the nerves with a strength that is incomparable, for movement has power to stir the senses and emotions, unique in itself." —Doris Humphrey*







Swept Away Rug in Grayscale



Swept Away Rug in Grayscale





Swept Away Rug/Runner in Grayscale



Swept Away Graphic Light in Grayscale





RUG

Order #: 00326067  
 Random: 00400626  
 Rug Size:  
 180.00" W x 180.00" L

1	2	3	4	5
6	7	8	9	10
11	12	13	14	15
16	17	18	19	20
21	22	23	24	25



RUG/RUNNER

Order #: 00333481  
 Length Pattern repeat:  
 108.00" W x 144.00" L

1	2	3
4	5	6
7	8	9
10	11	12

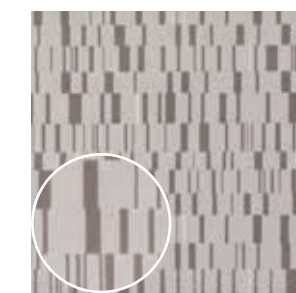


RUNNER WITH ACCENT  
 Available in 6' & 9' widths

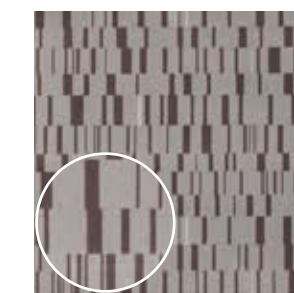
Order #: 00352740  
 Length Pattern repeat:  
 72.00" W x 144.00" L

1	2	3
4	5	6
7	8	9
10	11	12

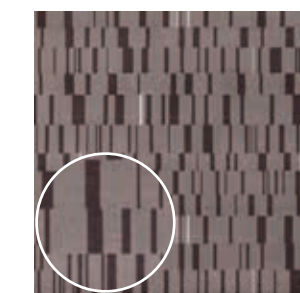
Order #: 00333688  
 Length Pattern repeat:  
 108.00" W x 144.00" L



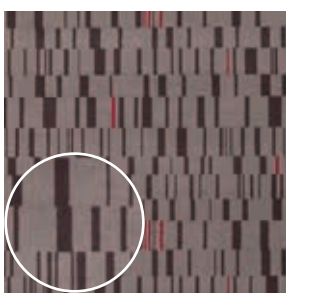
GRAPHIC—LIGHT  
 Order #: 00326195  
 Pattern repeat:  
 36.00" W x 36.00" L



GRAPHIC—MEDIUM  
 Order #: 00332131  
 Pattern repeat:  
 36.00" W x 36.00" L



GRAPHIC—DARK  
 Order #: 00326197  
 Pattern repeat:  
 36.00" W x 36.00" L



GRAPHIC—WITH ACCENT  
 Order #: 00332130  
 Pattern repeat:  
 36.00" W x 36.00" L





## CITY ESCAPE

All are invited to become a part of this design, part of the moment. The City Escape image creates intrigue and draws a visitor in through the effects of perspective and motion. Just like each commuter, observers will find themselves immersed into the city making a connection with it and those who inhabit it.

"The life of our city is rich in poetic and marvelous subjects. We are enveloped and steeped as though in an atmosphere of the marvelous; but we do not notice it."—Charles Baudelaire





City Escape Rug in Grayscale



Skinny Stripe Light & City Escape Graphic Light & Medium in Grayscale



City Escape Runner with Accent & Skinny Stripe Light in Grayscale



City Escape Graphic Light in Grayscale

### PUBLIC TO PRIVATE

The Moment Collection begins with a photographic image that emphasizes the movement and energy of a public space. As we move through a property and transition from public to semi-public to private areas, the patterns in Moment transition with us. Graphic structures layered over elements of the public image begin to emerge. These graphics allow for the evolution of the design until finally, when in our most private space, we are greeted with the basic forms and structural elements.





City Escape Rug in Grayscale



City Escape Graphic with Accent in Grayscale



### THE GRAPHIC

The graphic plays a large role as it merges with the image but it also continues the design language as it becomes a set of smaller patterns in each collection. Available in light, medium, dark and with accent. These add to the variety of color tones and scale choices offered in Moment.



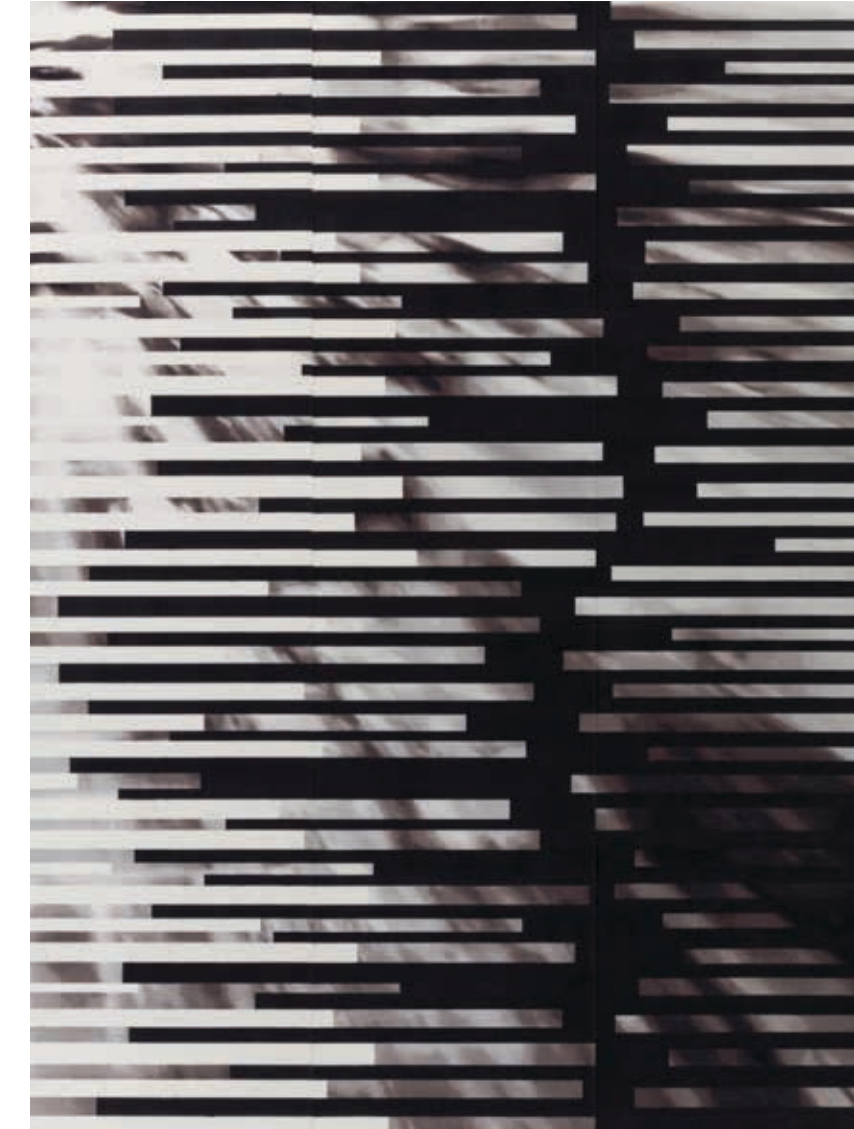


RUG

Order #: 00326072  
 Random: 00400628  
 Rug Size:  
 144.00" W x 180.00" L

1	2	3	4
5	6	7	8
9	10	11	12
13	14	15	16
17	18	19	20

Image shown rotated for installation layout

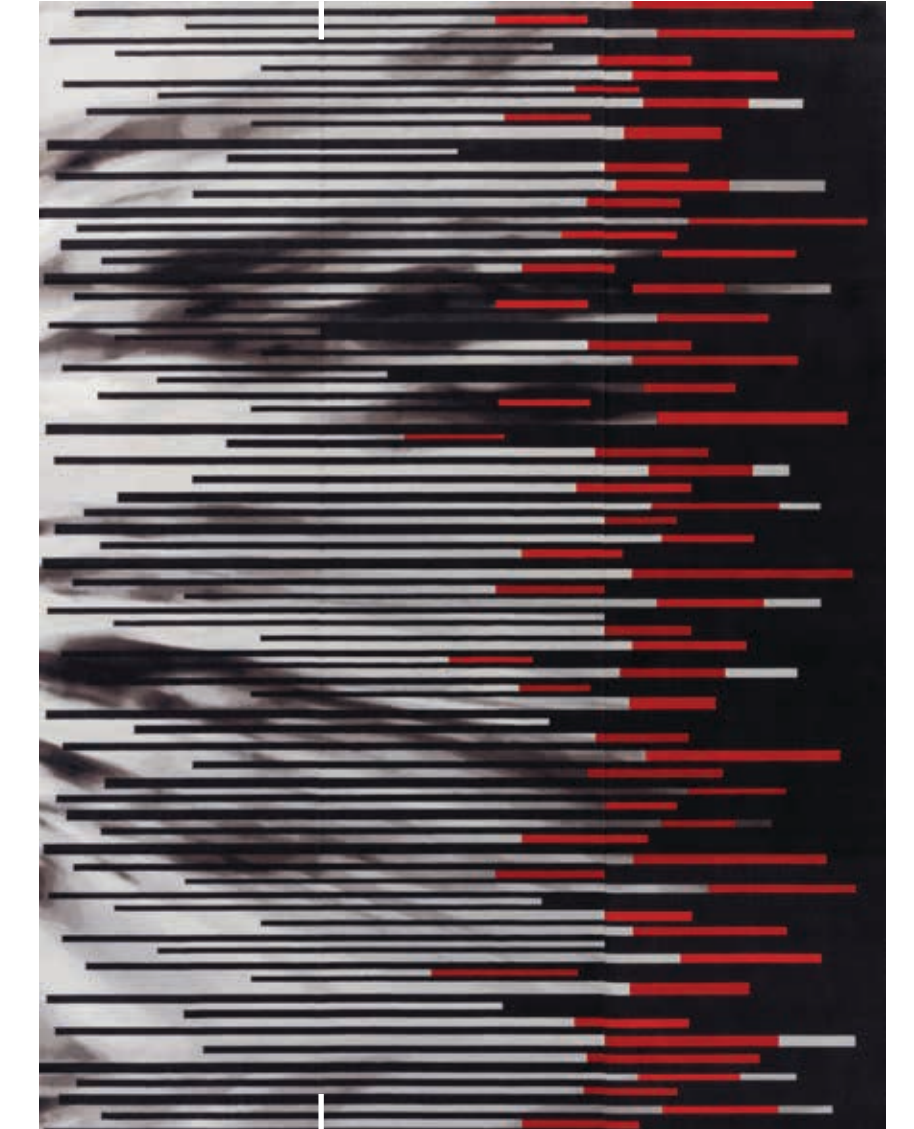


RUG/RUNNER

Order #: 00326073  
 Length Pattern repeat:  
 108.00" W x 144.00" L

1	2	3
4	5	6
7	8	9
10	11	12

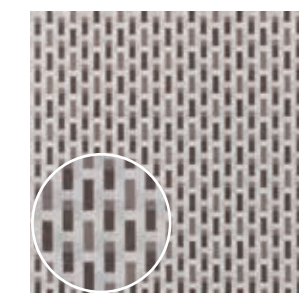
Image shown rotated for installation layout



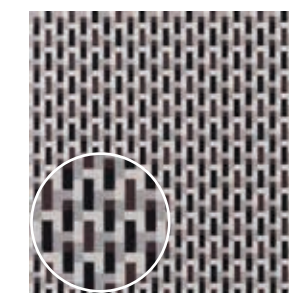
RUNNER WITH ACCENT  
 Available in 6' & 9' widths

Order #: 00352720  
 Length Pattern repeat:  
 72.00" W x 144.00" L  
 Order #: 00326088  
 Length Pattern repeat:  
 108.00" W x 144.00" L

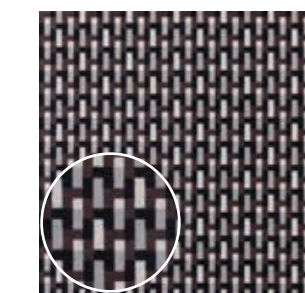
1	2	3
4	5	6
7	8	9
10	11	12



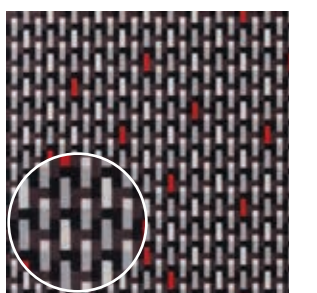
GRAPHIC—LIGHT  
 Order #: 00332127  
 Pattern repeat:  
 36.00" W x 36.00" L



GRAPHIC—MEDIUM  
 Order #: 00314488  
 Pattern repeat:  
 36.00" W x 36.00" L



GRAPHIC—DARK  
 Order #: 00314486  
 Pattern repeat:  
 36.00" W x 36.00" L



GRAPHIC—WITH ACCENT  
 Order #: 00326193  
 Pattern repeat:  
 36.00" W x 36.00" L





## **SATURDAY MORNING**

Immediately embrace the natural energy of the Saturday Morning design. The sound of the spokes turning. The blur of the wheels in motion. The breeze as the riders pass by. Saturday Morning features a retro, nostalgic image to contemporize the design and make it relevant in today's spaces.

"Life is like riding a bicycle. To keep your balance, you must keep moving."—Albert Einstein





Transitions Large Stripe Dark in Grayscale



Saturday Morning Rug & Large Stripe in Grayscale







## RANDOMIZED MODULAR LAYOUTS

Milliken's modular carpet tile expertise is evident in this collection. Each design was created to provide scale, color spectrum and luxury. The uniqueness of Milliken's technology and approach allows for the modular tile format to increase the flexibility and pattern possibilities, rather than being a limitation. Within the Moment Collection, there are 4 basic layout types: Large Scale Precision, Random, Random with Accent and Single tile.

Each different type adds to the versatility of the collection.

1	2	3
4	5	6
7	8	9

**LARGE SCALE PRECISION** — Used to create large scale pattern repeats normally only achieved via broadloom. Each unique tile has only one location and must be installed numerically to achieve precise pattern match at the intersection of each tile. A detailed floor plan is provided to ensure all tile are placed in the appropriate location to achieve the large scale aesthetic.

3	5	2
1	6	9
5	3	7

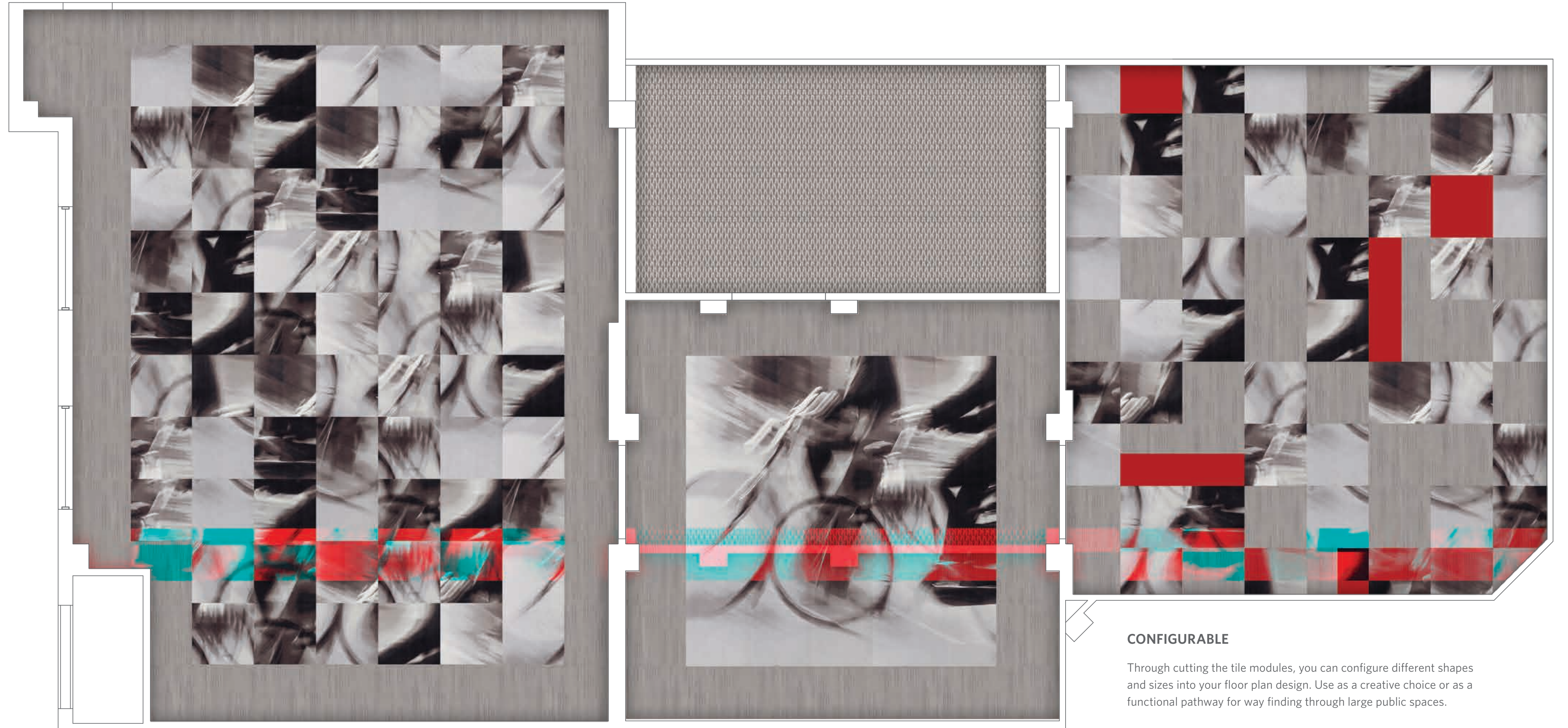
**RANDOM** — Contains multiple different tiles that are installed randomly with no pattern match at each tile. The variety in this layout type makes each installation unique without special installation instructions. The design is installed randomly from the delivery container with no particular order or placement required.

3	A	2
A	6	9
5	A	A

**RANDOM WITH ACCENT**—Similar to random, this install method utilizes a combination of outfill or accent tile to disperse the effect of the main random design. Any amount or combination of accent and outfill tile can be used to create a unique design each time.

1	1	1
1	1	1
1	1	1

**SINGLE TILE REPEAT** —Each tile contains the entire pattern repeat. When installed monolithically, the pattern will match at each edge and does require installation alignment. However, the design is confined to a single tile requiring no numeric order or SKU management on-site.



### CONFIGURABLE

Through cutting the tile modules, you can configure different shapes and sizes into your floor plan design. Use as a creative choice or as a functional pathway for way finding through large public spaces.



RANDOM



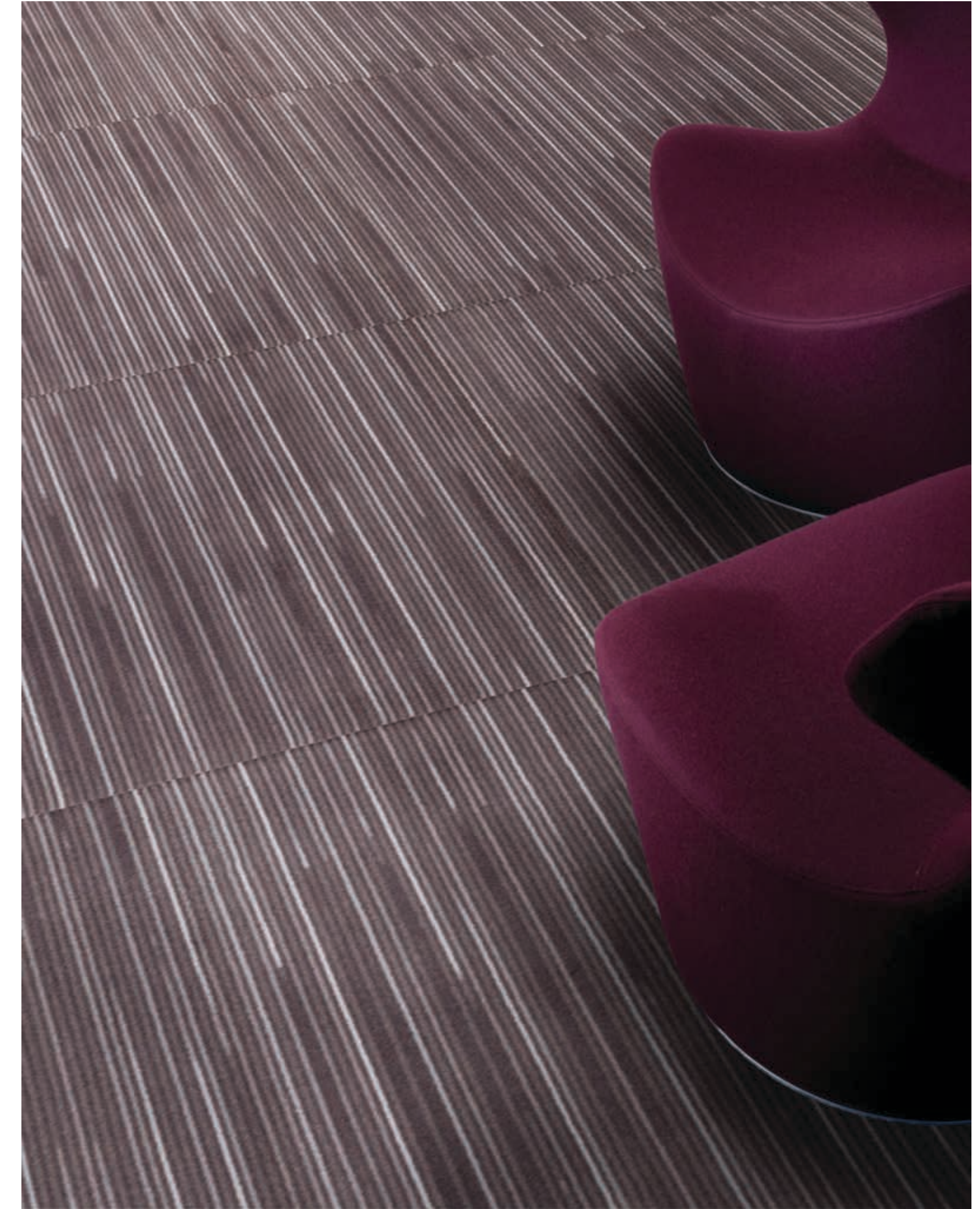
Saturday Morning Rug Random & Skinny Stripe Light in Grayscale



Saturday Morning Runner with R129 Accent & Graphic Medium in Grayscale

**CHANGE YOUR ACCENT**

Create a sophisticated custom look by just simply changing the accent color of the Moment Collection. Carry your signature color from your furniture, fabric or paint onto the floor. With 1360 colors to choose from in the Milliken Pure Color library, the choices are endless as you add that extra pop of color to the neutral gradient tones of Moment.



Transitions Large Stripe Medium in Grayscale





RUG

Order #: 00326074  
 Random: 00400627  
 Rug Size:  
 180.00" W x 180.00" L

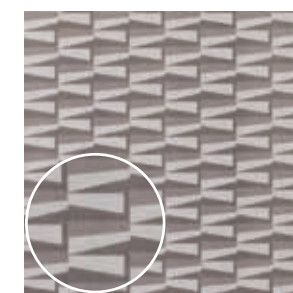
1	2	3	4	5
6	7	8	9	10
11	12	13	14	15
16	17	18	19	20
21	22	23	24	25



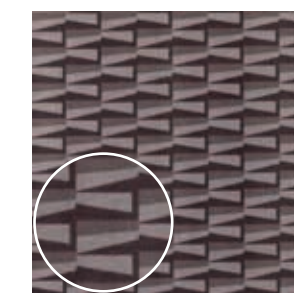
RUG/RUNNER

Order #: 00333319  
 Length Pattern repeat:  
 108.00" W x 144.00" L

1	2	3
4	5	6
7	8	9
10	11	12



GRAPHIC—LIGHT  
 Order #: 00326199  
 Pattern repeat:  
 36.00" W x 36.00" L



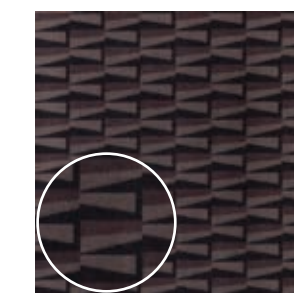
GRAPHIC—MEDIUM  
 Order #: 00334963  
 Pattern repeat:  
 36.00" W x 36.00" L



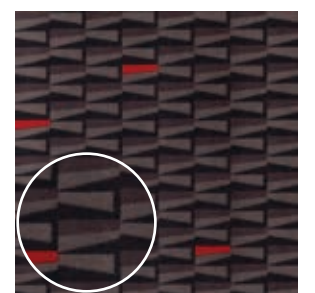
RUNNER WITH ACCENT  
 Available in 6' & 9' widths

Order #: 00352717  
 Length Pattern repeat:  
 72.00" W x 144.00" L  
 Order #: 00333736  
 Length Pattern repeat:  
 108.00" W x 144.00" L

1	2	3
4	5	6
7	8	9
10	11	12



GRAPHIC—DARK  
 Order #: 00333044  
 Pattern repeat:  
 36.00" W x 36.00" L



GRAPHIC—WITH ACCENT  
 Order #: 00332118  
 Pattern repeat:  
 36.00" W x 36.00" L





**FLEX & TRANSITIONS**

The Moment Collection includes patterns that coordinate with all of the design groups: On the Avenue, Swept Away, City Escape and Saturday Morning. These “flex patterns” allow multiple options when selecting the more structured rugs and runner elements to accompany the focal rug. The collection has also been designed to include ‘transition’ patterns. These patterns work effortlessly with all design groups and provide easy choices for out-fill or field tiles.





Flex Large with Skinny Stripe Light in Grayscale



## A KIT-OF-PARTS

There are many functional reasons why tile is the perfect choice but with Milliken's unique digital tile printing technology, the aesthetic options are what make it the creative choice. Each design and individual tile becomes a space planning tool in your creative kit-of-parts. Using the modular flexibility of tile, the pattern layout and repeat can become as large and as elaborate as you desire while just using a few SKU's. Just as in the architectural and construction application think of tile in the interior as MESR:

**Modular** - manufactured with standardized dimensions for flexibility and variety in use.

**Extensible** - the design layout can easily be extended.

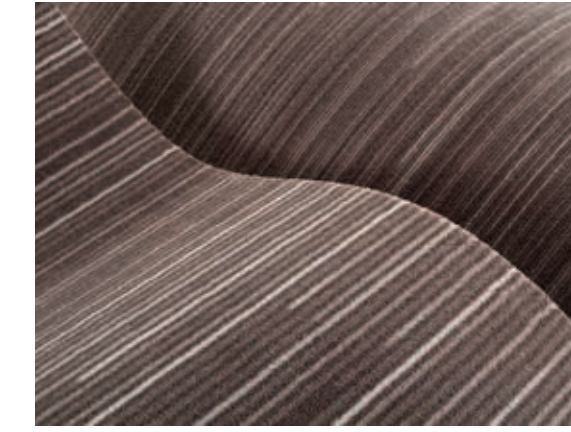
**Scalable** - the ability to change the design scale or size.

**Reconfigurable** - each tile can be mixed and matched in a variety of configurations.

Tile is not an aesthetic limitation but a creative freedom as the number of shapes and layouts you can realize in a floor plan are limitless.



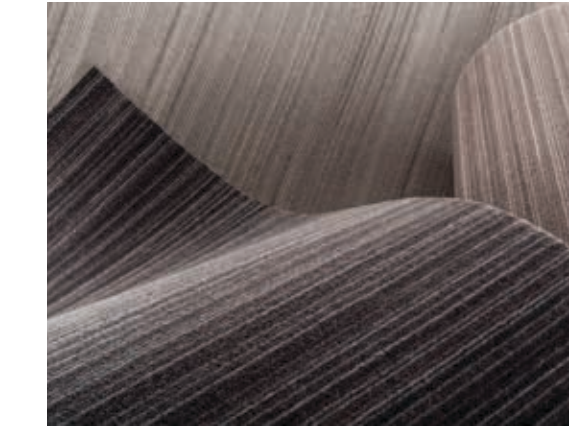
Transition Stripe Light, Medium & Dark in Grayscale



Use Skinny and Large Stripe individually or in combination.



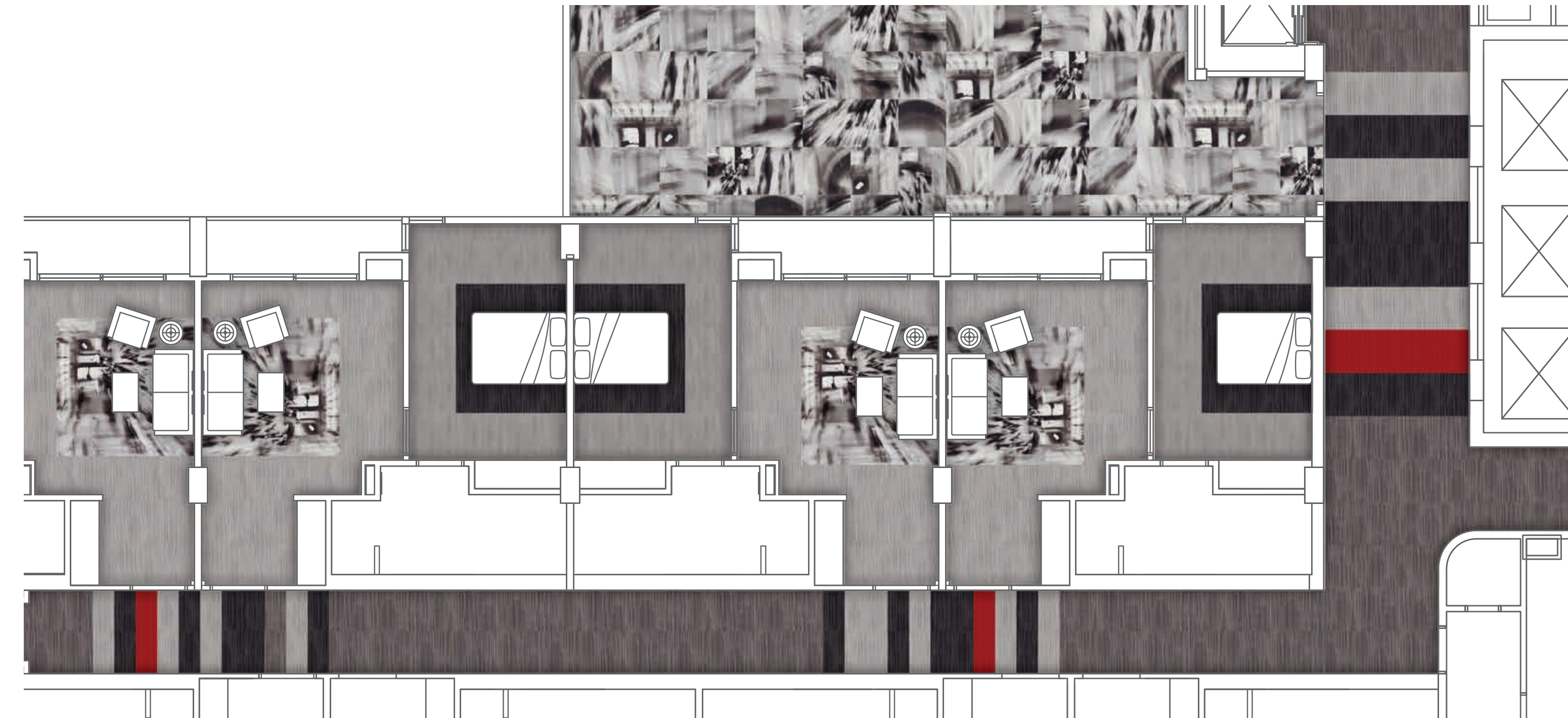
Use the large rugs in precision or random layouts.



Use any combination of Light, Medium & Dark to create space plans.



Use a near solid as transition.



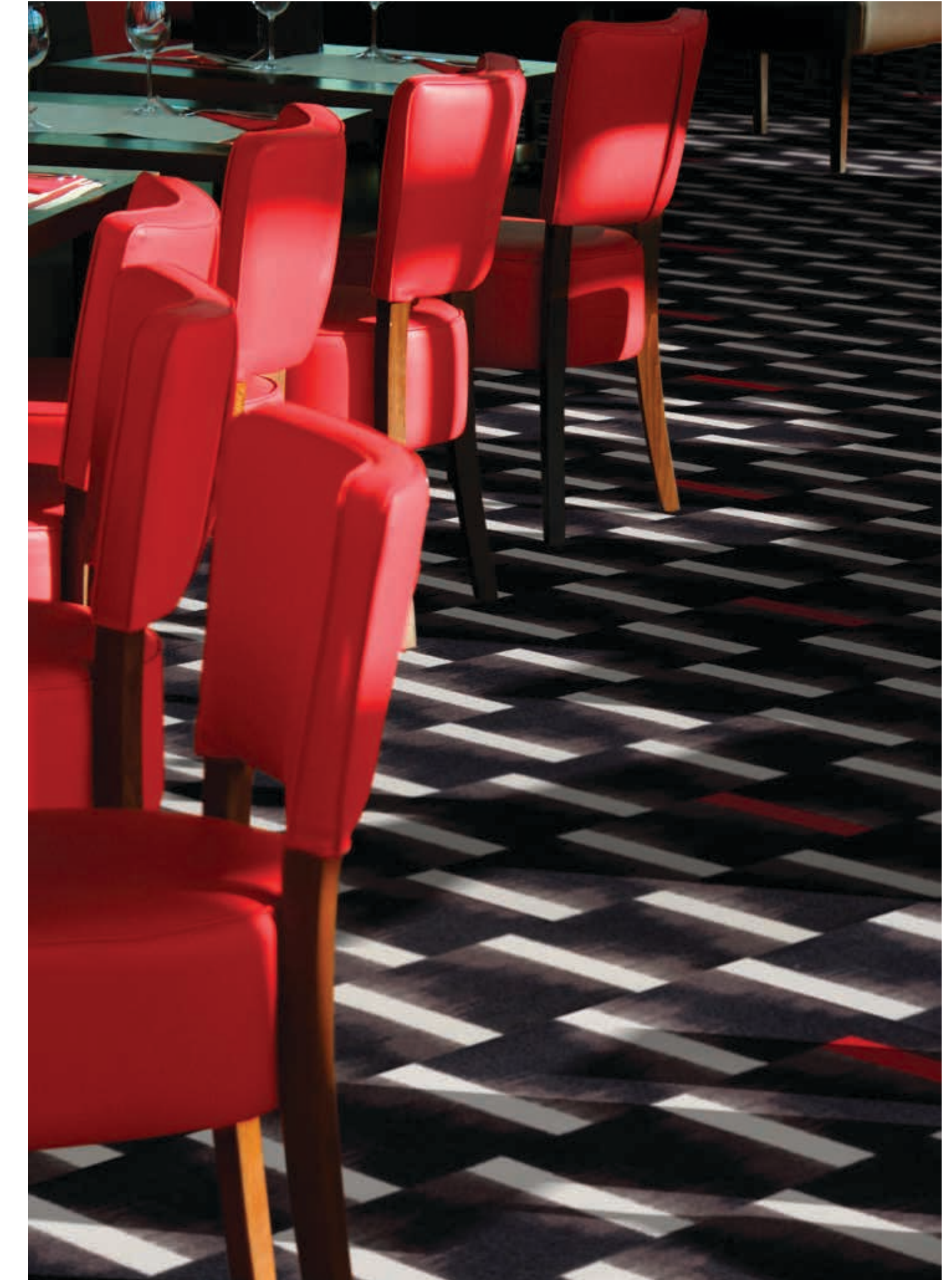




Transitions Large Stripe Light, Medium & Dark in Grayscale with E127 Solid Accent



Flex Large & Large Stripe Light in Grayscale



Flex Dashed with Accent in Grayscale





Stripe Random in Grayscale



On the Avenue Graphic Medium in Grayscale



**FLEX PATTERNS**

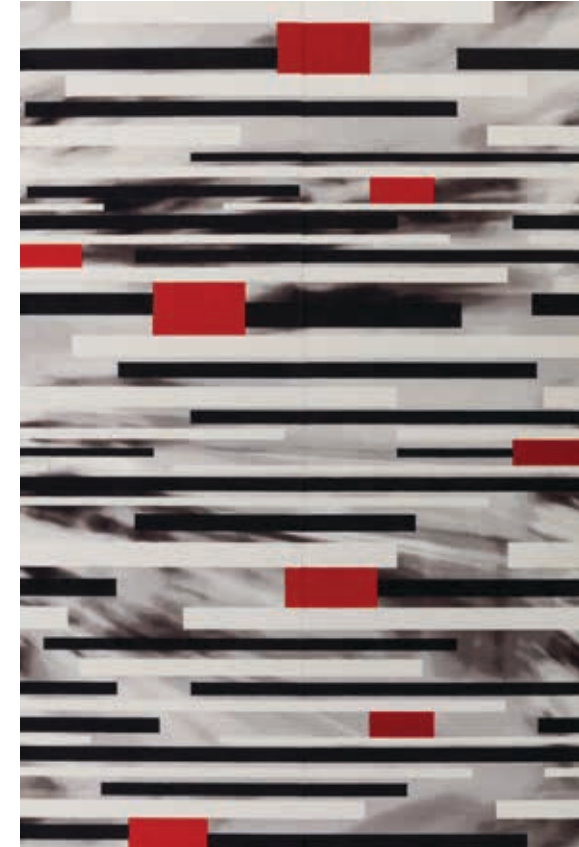
*Image shown rotated for installation layout*



**FLEX PATTERN LARGE**

Order #: 00326094  
Pattern repeat:  
108.00" W x 144.00" L

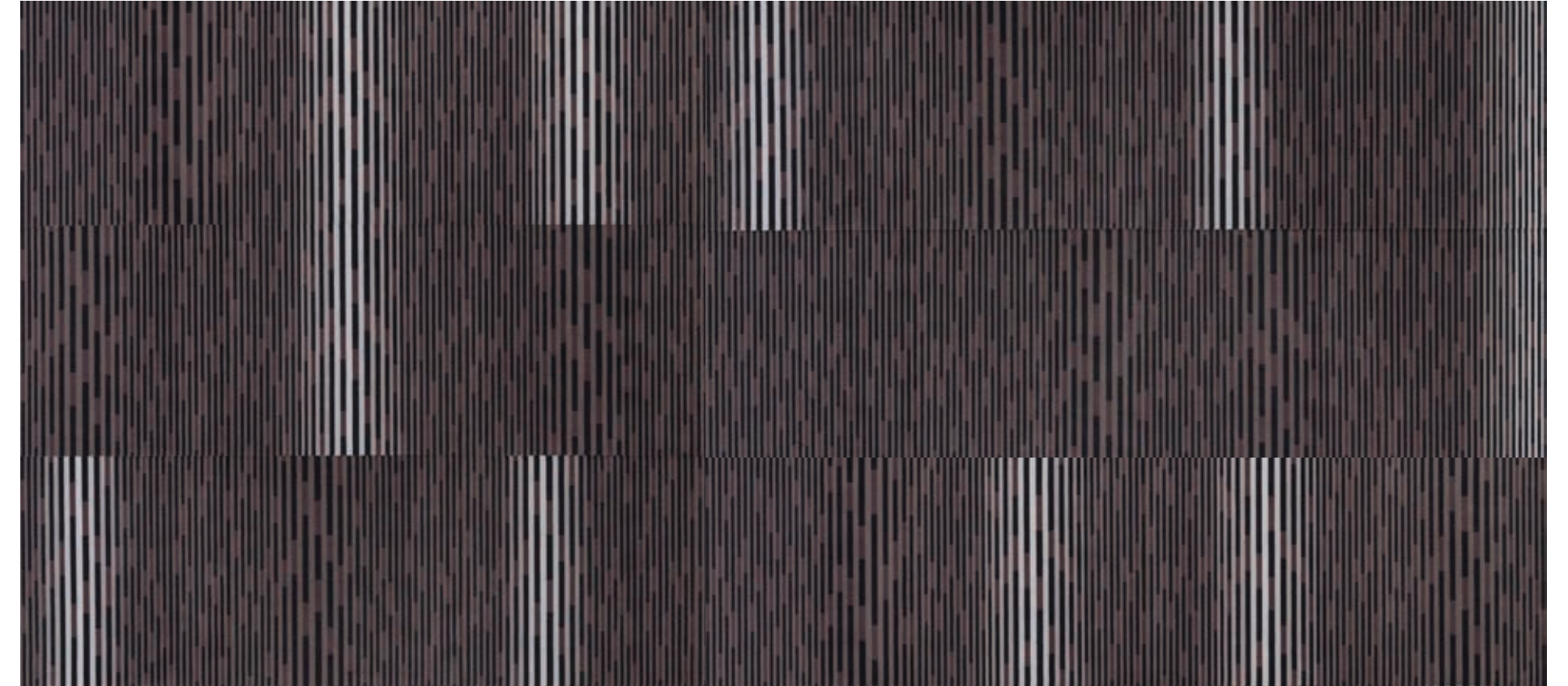
1	2	3
4	5	6
7	8	9
10	11	12



**FLEX PATTERN MEDIUM**

Order #: 00333663  
Pattern repeat:  
72.00" W x 108.00" L

1	2
3	4
5	6



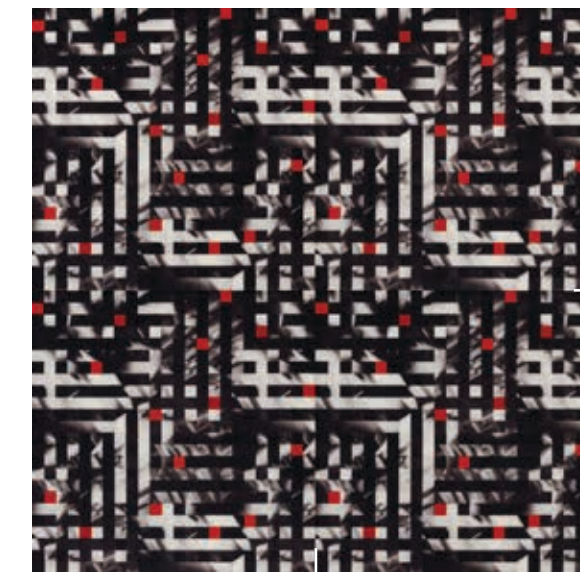
**STRIPE RANDOM**

Order #: 00326095  
Pattern repeat:  
Random



**FLEX WOVEN**

Order #: 00326191  
Pattern repeat:  
36.00" W x 36.00" L

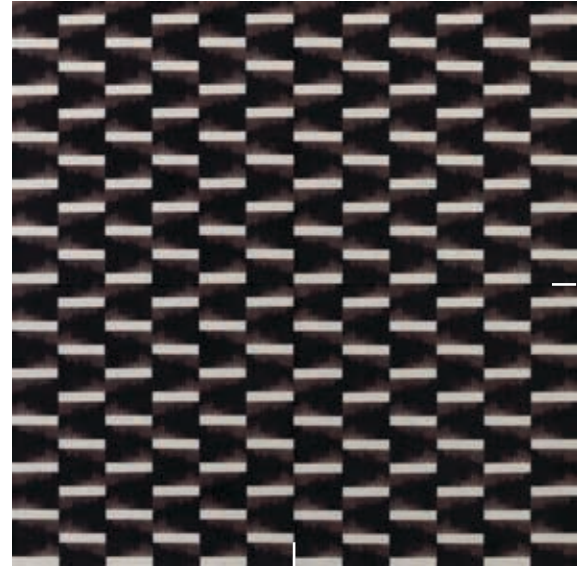


**FLEX WOVEN WITH ACCENT**

Order #: 00329855  
Pattern repeat:  
36.00" W x 36.00" L

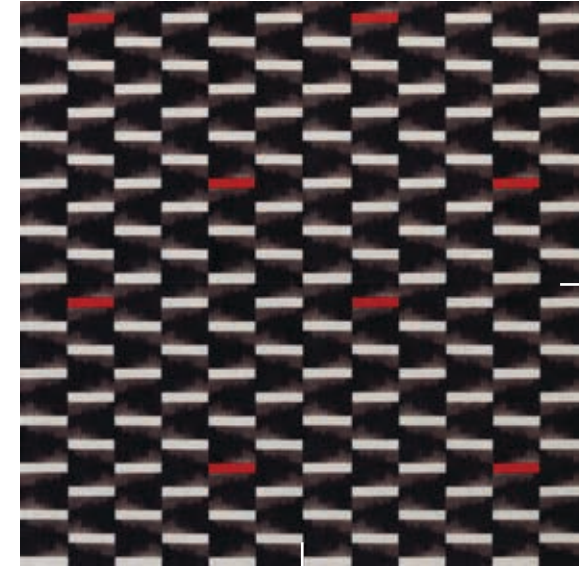


**FLEX PATTERNS**



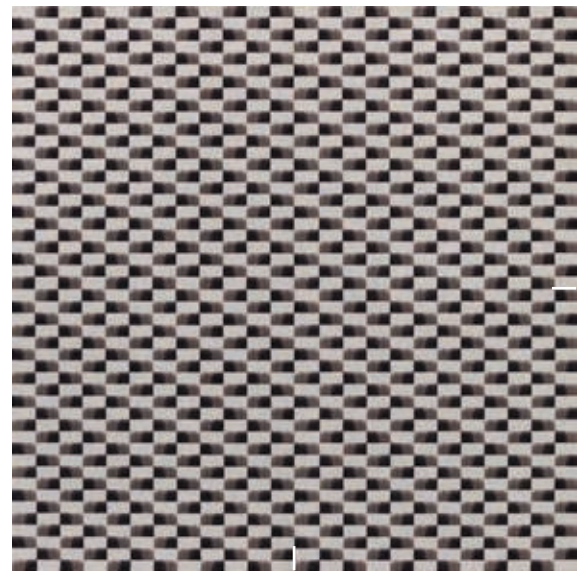
**FLEXED DASH**

Order #: 00326110  
Pattern repeat:  
36.00"W x 36.00"L



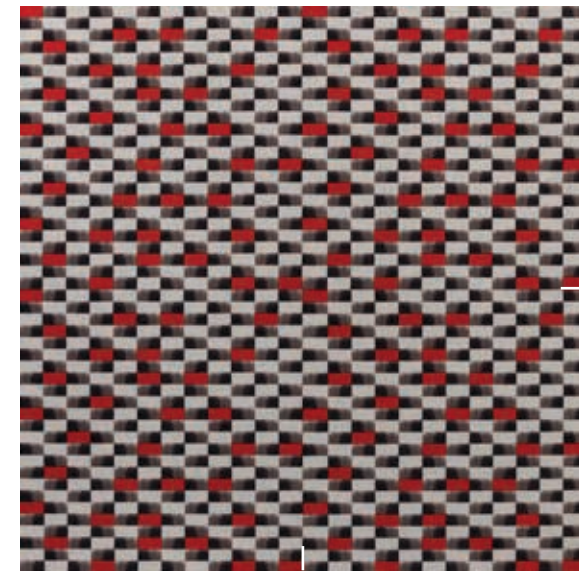
**FLEXED DASH WITH ACCENT**

Order #: 00326112  
Pattern repeat:  
36.00"W x 36.00"L



**FLEX CHECKER**

Order #: 00326113  
Pattern repeat:  
36.00"W x 36.00"L



**FLEX CHECKER WITH ACCENT**

Order #: 00326114  
Pattern repeat:  
36.00"W x 36.00"L

**TRANSITIONS**



**LARGE STRIPE DARK**

Order #: 00337666  
Pattern repeat:  
Random



**SKINNY STRIPE LIGHT**

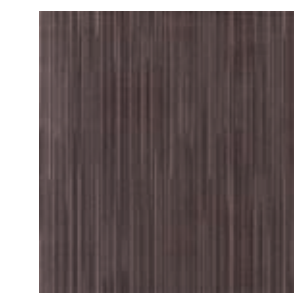
Order #: 00333397  
Pattern repeat:  
Random



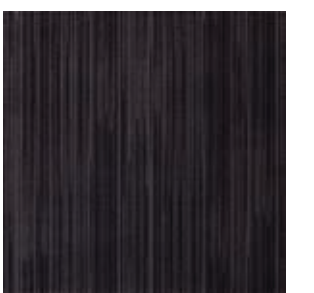
**LARGE STRIPE LIGHT**  
Order #: 00337660  
Pattern repeat:  
Random



**LARGE STRIPE MEDIUM**  
Order #: 00337663  
Pattern repeat:  
Random



**SKINNY STRIPE MEDIUM**  
Order #: 00334978  
Pattern repeat:  
Random



**SKINNY STRIPE DARK**  
Order #: 00334977  
Pattern repeat:  
Random



## MILLIKEN'S GRADIENT PROCESS

With over 30 colors in each design, Moment expands upon the availability of 12 colors in other designs. This new color freedom is achieved differently and requires a new way of processing color. The designs are created through a color gradient process eliminating the need to individually place color. Due to the advanced high resolution printing technique, many resulting subtle variants and trace colors are achieved. The color technique offered in this collection is leading the industry in how pattern is created by color.

Provide us with color direction and the Milliken Design team will make your custom creation a reality.

## CUSTOM COLOR PROCESS

Due to the gradient process, custom recoloring is not color for color replacement as traditionally done with most carpet technologies. Think of the carpet design as a photographic image which allows for color shifting or tinting. When recoloring the patterns in Moment, you can choose from our standard color choices Grayscale and Duotone or you can provide us with color direction for your custom gradient.

In order to create your custom color, you will need to select 2 new midtones from the Pure Color Library. The Milliken Design team will then build the color spectrum by adding lighter and darker tones allowing us to achieve the best possible gradient of color. Using this new gradient, the design is recreated in the new enhanced color palette.

Because of the nature of this process, custom coloring is time consuming and needs to be planned in your project time-line like custom design work. The end result is worth the extra time as ultimately each design is unique art for your specific project.

## USING A PHOTOGRAPHIC COLOR APPROACH

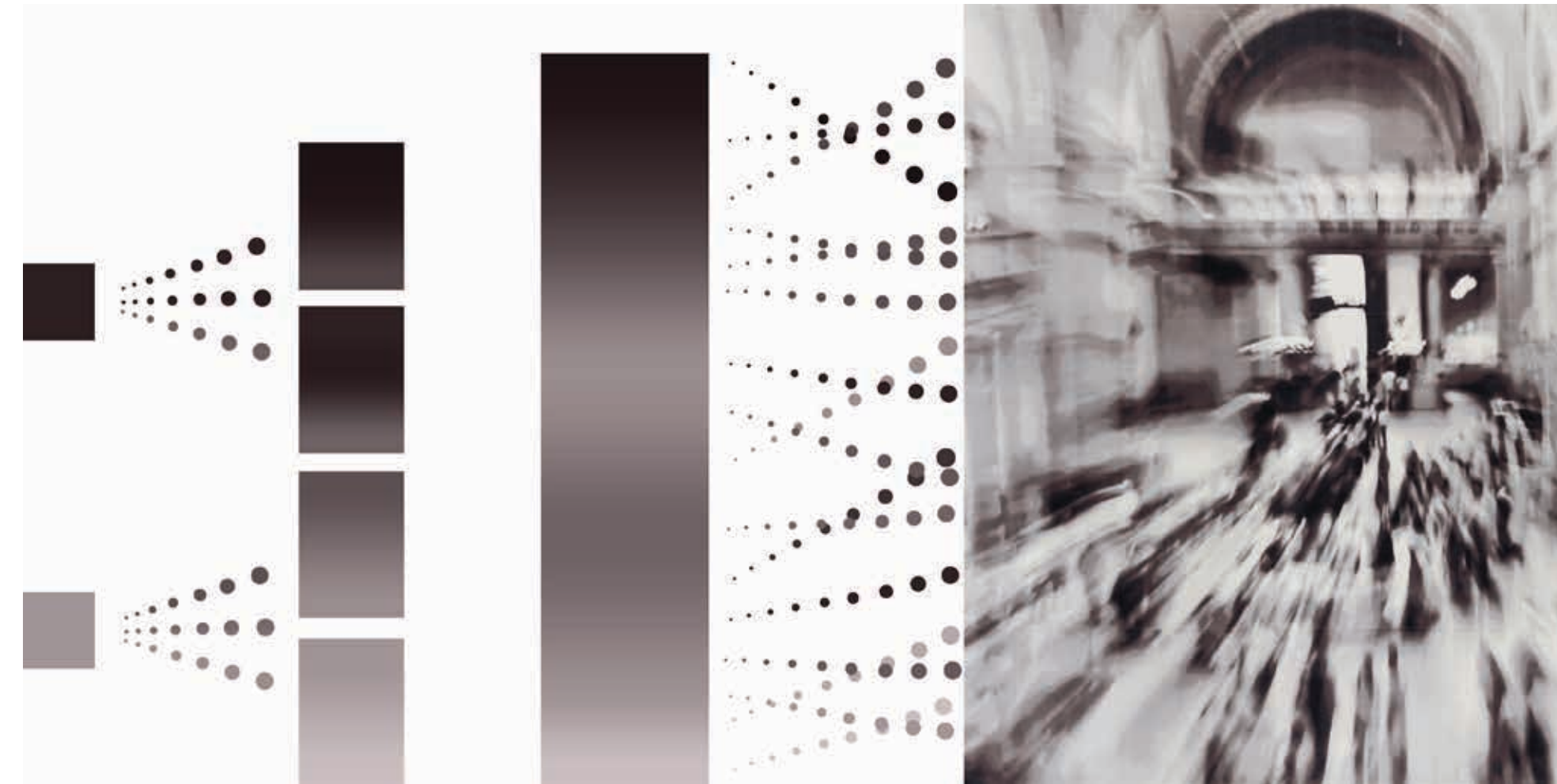
The photographic approach to color in the Moment Collection is critical and the subject matter the source for visually communicating the beauty that can be achieved through digital printing.

### GRAYSCALE

As with most photography today, using grayscale tones is a way to project a very clean and modern style. The stark black and white contrast as well as the use of the gray midtones provides a very subtle yet dramatic affect, the reason it was selected as the signature color palette for the Moment Colleciton.

### DUOTONE

Duotone adds warmth to the designs while maintaining the depth and character of the original photography. The colorway enables the customer to visualize the collections versatility by providing an alternative way to approach the color. Through selecting a halftone, you can control the color shift and mood of Moment.



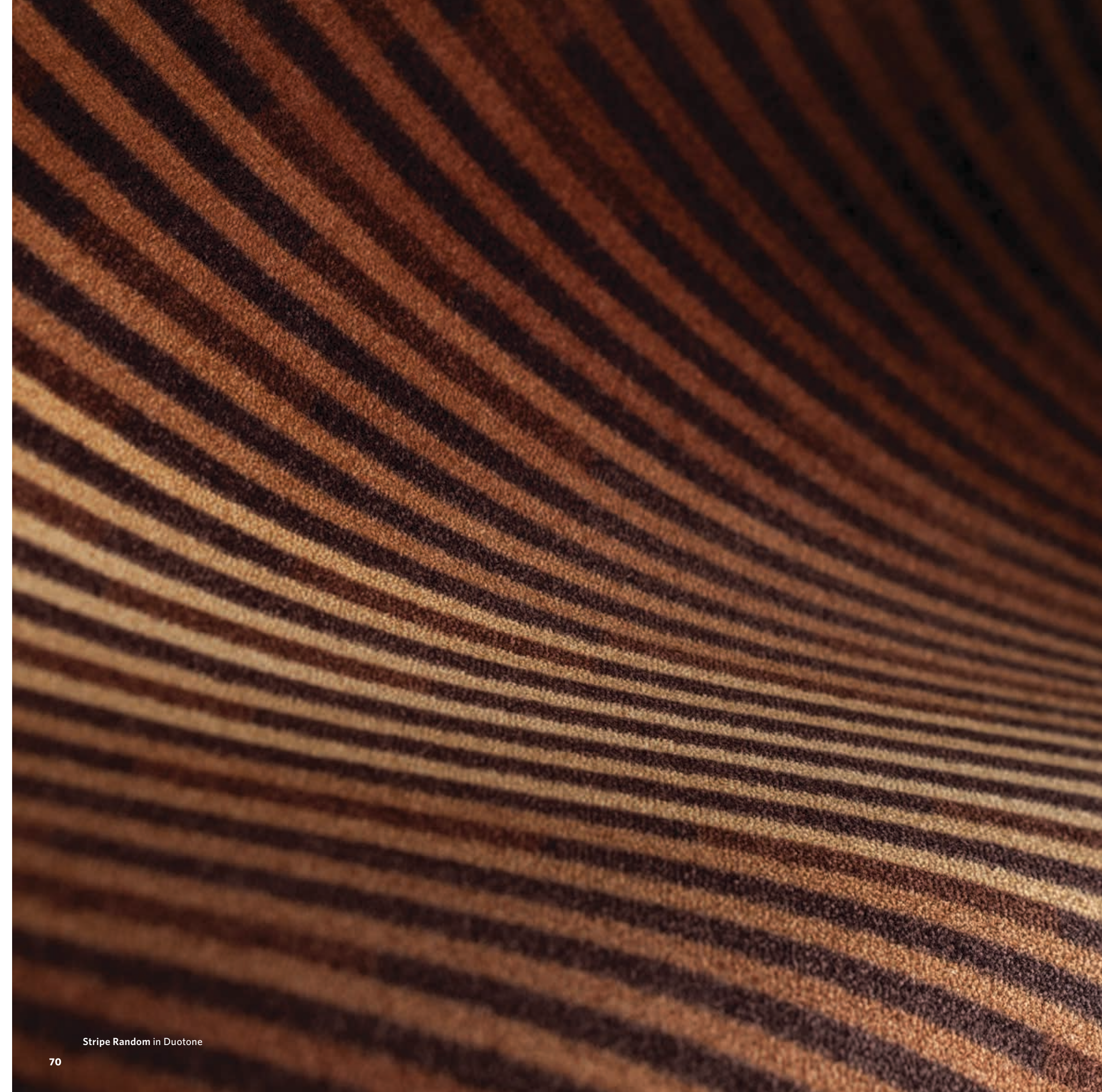
You provide the color direction.

Milliken creates the color spectrum.

Colors merge to create an enhanced image.







#### DUOTONE

Using browns as the halftone, the Duotone color palette is less stark adding to the functionality and giving it an almost distressed quality. The range of brown midtones and the bright yellow accent add depth and warmth to Moment.









Large Stripe Medium in Duotone



On the Avenue Rug & Large Stripe Medium in Duotone





City Escape Rug/Runner in Duotone

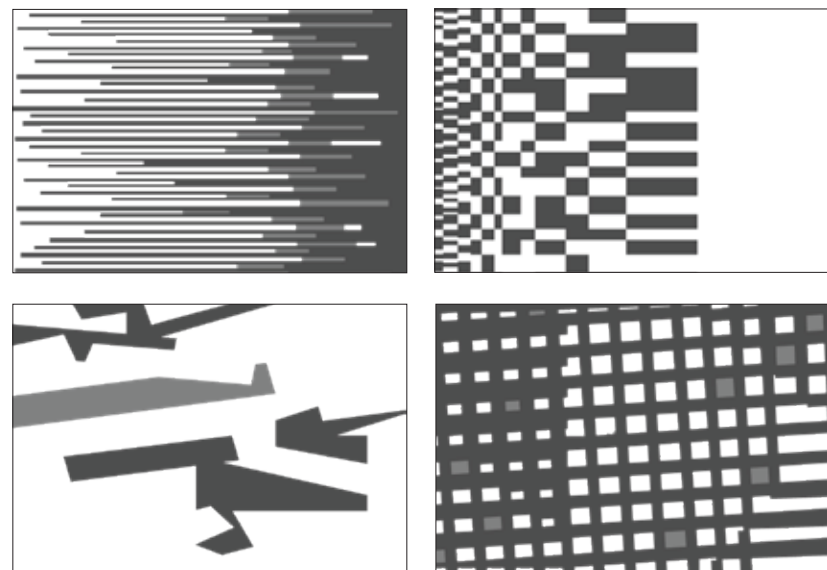


Skinny Stripe Medium in Duotone

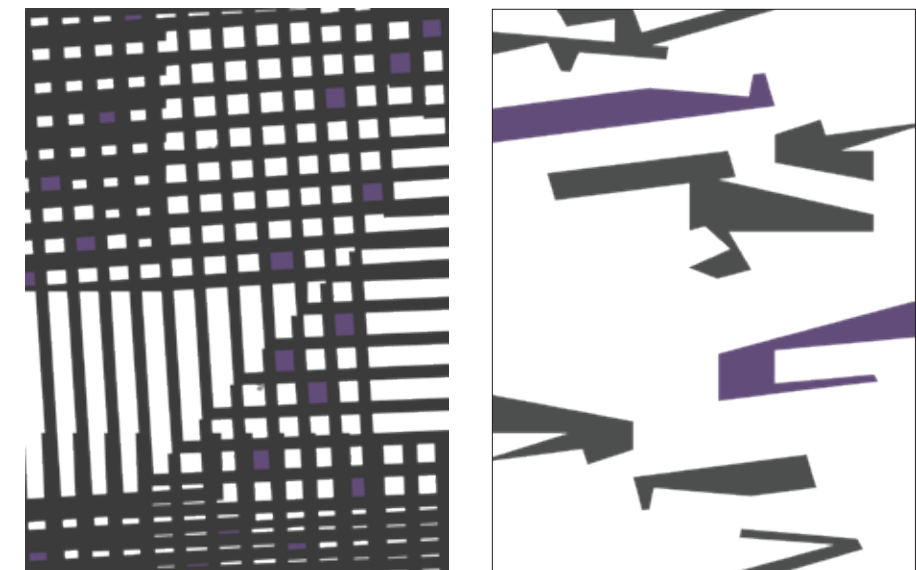




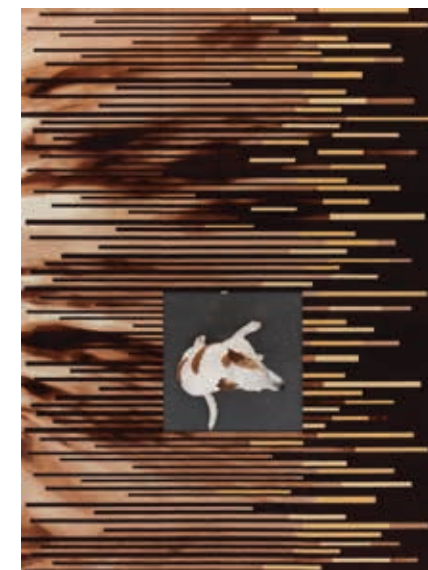
Swept Away Runner with Accent in Duotone



Use one of our graphic layers.



Change the accent color.



Use your own image.

#### WAYS TO CUSTOMIZE

The Moment Collection was meant to inspire and create collaborate interactions with interior designers. Due to the photographic nature, the custom process can be more complex and time consuming. Therefore, features were intentionally added in the development of each design to enable easier ways to customize.

- Change your accent color
- Mix or create your own graphic layer
- Select your Duotone color choice
- Send us your photo or image

Each color is digitally printed on the carpet in tile form, making each tile a canvas and your vision possible.





On the Avenue Rug & Runner with Accent in Duotone



On the Avenue Graphic Light in Duotone



Flex Medium in Duotone









Order # : 00335603  
Random: 00401293



Order # : 00335889



Order # : 00334144



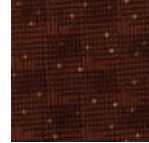
Order # : 00334146



Order # : 00335898



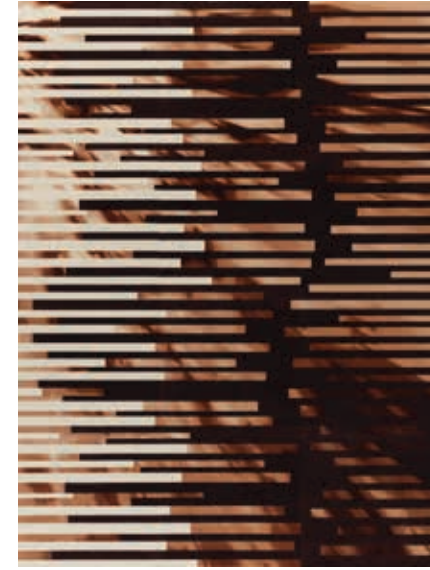
Order # : 00334148



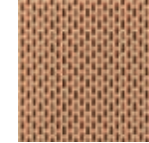
Order # : 00338173



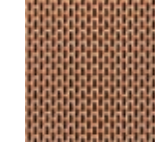
Order # : 00335887  
Random: 00401292



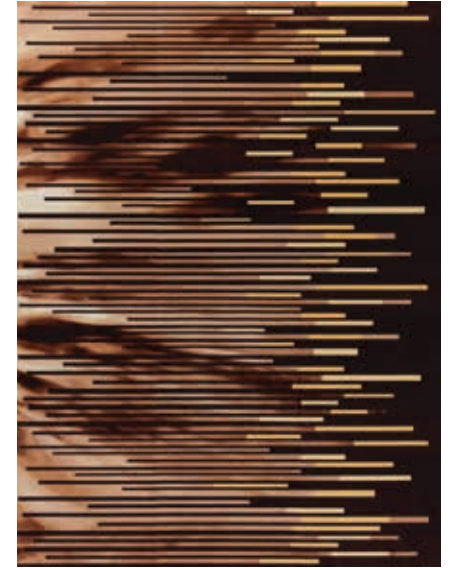
Order # : 00335895



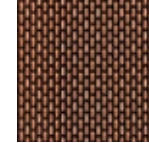
Order # : 00338185



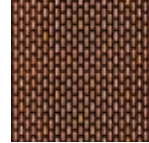
Order # : 00334135



Order # : 00335900



Order # : 00334137



Order # : 00338189



Order # : 00335605  
Random: 00401290



Order # : 00338011



Order # : 00334139



Order # : 00334142



Order # : 00338074



Order # : 00338175



Order # : 00341800



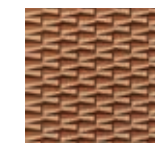
Order # : 00335604  
Random: 00401291



Order # : 00337973



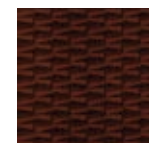
Order # : 00338165



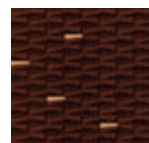
Order # : 00334131



Order # : 00338057



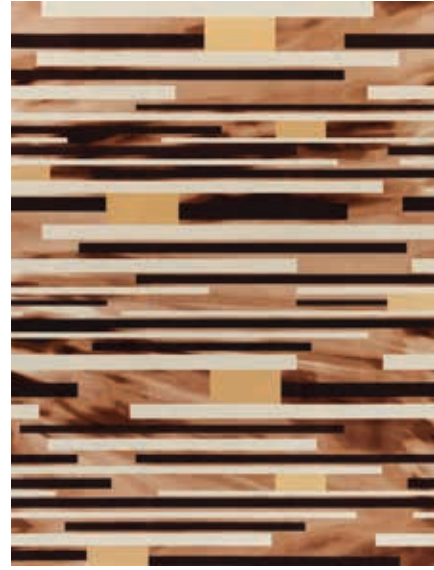
Order # : 00334133



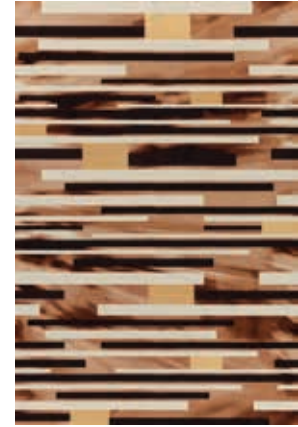
Order # : 00338172



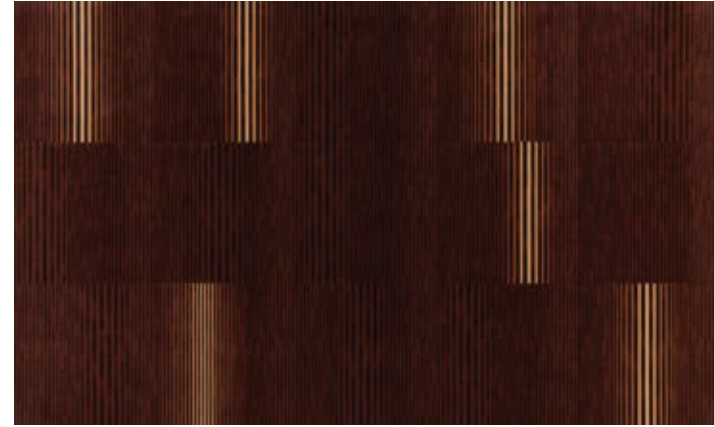
MOMENT—DUOTONE



Order # : 00338296



Order # : 00342217



Order # : 00338443



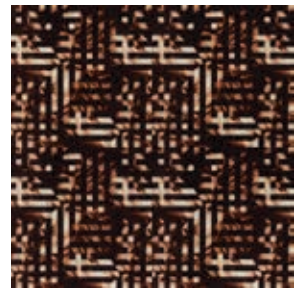
Order # : 00338194



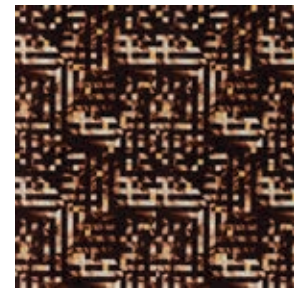
Order # : 00338195



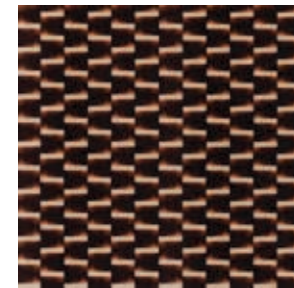
Order # : 00338196



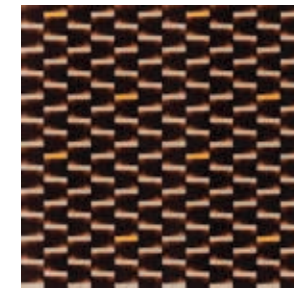
Order # : 00335906



Order # : 00338304



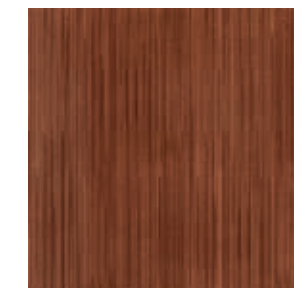
Order # : 00343425



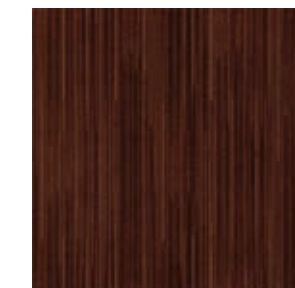
Order # : 00344650



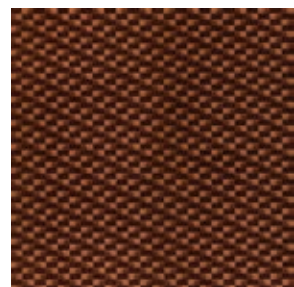
Order # : 00335161



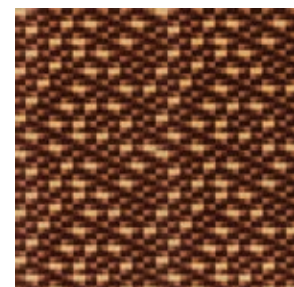
Order # : 00335165



Order # : 00335170



Order # : 00343430

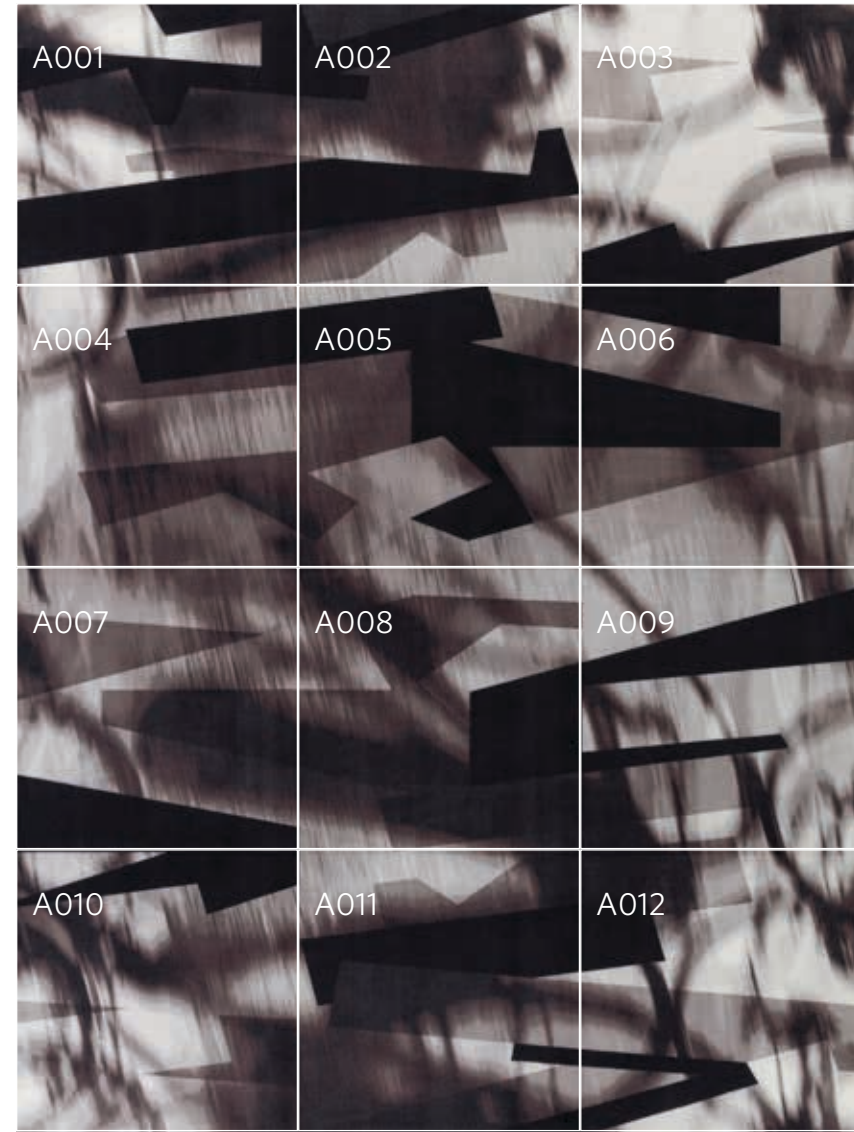


Order # : 00344647



## INCODE

Elaborate large scale designs created with multiple unique tiles may seem overwhelming and a perceived installation challenge. However, Milliken's Incode is a unique technology that achieves large scale designs with an easy install process that benefits installers, specifying designers, and end-users.



STEP 1



## INCODE PROCESS

STEP 1 — Milliken creates an installation map and SKU coding for each custom tile design.

STEP 2 — While each tile is being manufactured, the unique code is dye injected into the carpet face using a temporary, UV sensitive dye.

STEP 3 — Once the code is revealed with a UV light, the installation becomes as simple as 'install by numbers'.

Get more at [millikencarpet.com](http://millikencarpet.com)



STEP 3



## MOMENT COLLECTION OVERVIEW

DESIGN NAME	GRAYSCALE	DUOTONE	LAYOUT TYPE	PATTERN REPEAT	TILE GRID	GRAYSCALE VIEWED ON PAGE	DUOTONE VIEWED ON PAGE	GRAYSCALE BROADLOOM	DUOTONE BROADLOOM
ON THE AVENUE RUG	00332518	00335603	LARGE PRECISION	180.00"W X 180.00"L	5 X 5 GRID—25 TILES	2-3, 5-6, 11, 13-14, 16	75, 81, 86	00366309	00369067
ON THE AVENUE RUG/RUNNER	00314565	00335889	LARGE PRECISION	108.00"W X 144.00"L	3 X 4 GRID—12 TILES	13-14, 17	86	00378701	00378797
ON THE AVENUE RUNNER W/ACCENT 9'	00326087	00335898	LARGE PRECISION	108.00"W X 144.00"L	3 X 4 GRID—12 TILES	12, 13-14, 15, 17	86	N/A	N/A
ON THE AVENUE RUNNER W/ACCENT 6'	00352724	00353535	LARGE PRECISION	72.00"W X 144.00"L	2 X 4 GRID—8 TILES	12, 17	86	00366417	00369075
ON THE AVENUE GRAPHIC LIGHT	00331426	00334144	SINGLE TILE	36.00"W X 36.00"L	1 X 1 GRID—1 TILE	17	82, 86	00366463	00369080
ON THE AVENUE GRAPHIC MEDIUM	00331427	00334146	SINGLE TILE	36.00"W X 36.00"L	1 X 1 GRID—1 TILE	17,61	86	00366466	00369083
ON THE AVENUE GRAPHIC DARK	00331428	00334148	SINGLE TILE	36.00"W X 36.00"L	1 X 1 GRID—1 TILE	17	86	00366470	00369089
ON THE AVENUE GRAPHIC W/ACCENT	00332109	00338173	SINGLE TILE	36.00"W X 36.00"L	1 X 1 GRID—1 TILE	17	86	00366474	00369092
SWEPT AWAY RUG	00326067	00335605	LARGE PRECISION	144.00"W X 180.00"L	4 X 5 GRID—20 TILES	20, 21, 24	86	00366289	00366831
SWEPT AWAY RUG/RUNNER	00333481	00338011	LARGE PRECISION	108.00"W X 144.00"L	3 X 4 GRID—12 TILES	22, 25	86	00366291	00366920
SWEPT AWAY RUNNER W/ACCENT 9'	00333688	00338074	LARGE PRECISION	108.00"W X 144.00"L	3 X 4 GRID—12 TILES	25	78, 86	N/A	N/A
SWEPT AWAY RUNNER W/ACCENT 6'	00352740	00353527	LARGE PRECISION	72.00"W X 144.00"L	2 X 4 GRID—8 TILES	25	86	00366315	00366921
SWEPT AWAY GRAPHIC LIGHT	00326195	00334139	SINGLE TILE	36.00"W X 36.00"L	1 X 1 GRID—1 TILE	23, 25	86	00366317	00366942
SWEPT AWAY GRAPHIC MEDIUM	00332131	00334142	SINGLE TILE	36.00"W X 36.00"L	1 X 1 GRID—1 TILE	25	86	00366320	00366944
SWEPT AWAY GRAPHIC DARK	00326197	00338175	SINGLE TILE	36.00"W X 36.00"L	1 X 1 GRID—1 TILE	25	86	00366335	00366945
SWEPT AWAY GRAPHIC W/ACCENT	00332130	00341800	SINGLE TILE	36.00"W X 36.00"L	1 X 1 GRID—1 TILE	25	86	00366391	00366965
CITY ESCAPE RUG	00326072	00335887	LARGE PRECISION	144.00"W X 180.00"L	5 X 5 GRID—25 TILES	28, 31, 34, 55-56, 67, 68	87	00366303	00367161
CITY ESCAPE RUG/RUNNER	00326073	00335895	LARGE PRECISION	108.00"W X 144.00"L	3 X 4 GRID—12 TILES	35, 55	76, 87	00378707	00378791
CITY ESCAPE RUNNER W/ACCENT 9'	00326088	00335900	LARGE PRECISION	108.00"W X 144.00"L	3 X 4 GRID—12 TILES	29, 35	87	N/A	N/A
CITY ESCAPE RUNNER W/ACCENT 6'	00352720	00353534	LARGE PRECISION	72.00"W X 144.00"L	2 X 4 GRID—8 TILES	35	87	00366407	00367448
CITY ESCAPE GRAPHIC LIGHT	00332127	00338185	SINGLE TILE	36.00"W X 36.00"L	1 X 1 GRID—1 TILE	28, 30, 33, 35	87	00366504	00369052
CITY ESCAPE GRAPHIC MEDIUM	00314488	00334135	SINGLE TILE	36.00"W X 36.00"L	1 X 1 GRID—1 TILE	28, 33, 35	87	00366487	00369057
CITY ESCAPE GRAPHIC DARK	00314486	00334137	SINGLE TILE	36.00"W X 36.00"L	1 X 1 GRID—1 TILE	33, 35	87	00366507	00369061
CITY ESCAPE GRAPHIC W/ACCENT	00326193	00338189	SINGLE TILE	36.00"W X 36.00"L	1 X 1 GRID—1 TILE	32, 35	87	00366515	00369064
SATURDAY MORNING RUG	00326074	00335604	LARGE PRECISION	180.00"W X 180.00"L	5 X 5 GRID—25 TILES	39, 43-44, 45, 48	72-73, 87	00366295	00367132
SATURDAY MORNING RUG/RUNNER	00333319	00337973	LARGE PRECISION	108.00"W X 144.00"L	3 X 4 GRID—12 TILES	40-41, 49	87	00366398	00367134
SATURDAY MORNING RUNNER W/ACCENT 9'	00333736	00338057	LARGE PRECISION	108.00"W X 144.00"L	3 X 4 GRID—12 TILES	49	87	N/A	N/A
SATURDAY MORNING RUNNER W/ACCENT 6'	00352717	00353531	LARGE PRECISION	72.00"W X 144.00"L	2 X 4 GRID—8 TILES	49	87	00366299	00367136
SATURDAY MORNING GRAPHIC LIGHT	00326199	00338165	SINGLE TILE	36.00"W X 36.00"L	1 X 1 GRID—1 TILE	43-44, 49	87	00366428	00367141
SATURDAY MORNING GRAPHIC MEDIUM	00334963	00334131	SINGLE TILE	36.00"W X 36.00"L	1 X 1 GRID—1 TILE	46, 49	87	00366432	00367147
SATURDAY MORNING GRAPHIC DARK	00333044	00334133	SINGLE TILE	36.00"W X 36.00"L	1 X 1 GRID—1 TILE	49	87	00366443	00367152
SATURDAY MORNING GRAPHIC W/ACCENT	00332118	00338172	SINGLE TILE	36.00"W X 36.00"L	1 X 1 GRID—1 TILE	49	87	00366446	00367157
FLEX PATTERN LARGE	00326094	00338296	LARGE PRECISION	108.00"W X 144.00"L	3 X 4 GRID—12 TILES	52-53, 57, 62	88	N/A	N/A
FLEX PATTERN MEDIUM	00333663	00342217	LARGE PRECISION	72.00"W X 108.00"L	2 X 3 GRID—6 TILES	62	83, 88	00366427	00369306
FLEX STRIPE RANDOM	00326095	00338443	RANDOM	RANDOM	7 UNIQUE TILES—RANDOM	60, 63	70, 88	00381679	00401501
FLEX WOVEN	00326191	00335906	SINGLE TILE	36.00"W X 36.00"L	1 X 1 GRID—1 TILE	63	88	00366579	00369101
FLEX WOVEN W/ACCENT	00329855	00338304	SINGLE TILE	36.00"W X 36.00"L	1 X 1 GRID—1 TILE	63	88	00366582	00369103
FLEX DASHED	00326110	00343425	SINGLE TILE	36.00"W X 36.00"L	1 X 1 GRID—1 TILE	64	88	00366788	00369105
FLEX DASHED W/ACCENT	00326112	00344650	SINGLE TILE	36.00"W X 36.00"L	1 X 1 GRID—1 TILE	58, 64	88	00366792	00369110
FLEX CHECKER	00326113	00343430	RANDOM	RANDOM	1 X 1 GRID—1 TILE	50.64	88	00366801	00369296
FLEX CHECKER W/ACCENT	00326114	00344647	SINGLE TILE	36.00"W X 36.00"L	1 X 1 GRID—1 TILE	64	88	00366806	00369301
TRANSITIONS LARGE STRIPE LIGHT	00337660	00335161	RANDOM	RANDOM	1 X 1 GRID—RANDOM	10, 57, 58, 65	89	00380971	00380975
TRANSITIONS LARGE STRIPE MEDIUM	00337663	00335165	RANDOM	RANDOM	1 X 1 GRID—RANDOM	47, 55-56, 65	74, 75, 89	00380972	00380976
TRANSITIONS LARGE STRIPE DARK	00337666	00335170	RANDOM	RANDOM	1 X 1 GRID—RANDOM	38, 39, 55-56, 57, 65	89	00380974	00380978
TRANSITIONS SKINNY STRIPE LIGHT	00333397	00338194	RANDOM	RANDOM	1 X 1 GRID—RANDOM	5-6, 13-14, 28, 29, 43-44, 45, 53, 54, 55-56, 65	89	00380892	00380895
TRANSITIONS SKINNY STRIPE MEDIUM	00334978	00338195	RANDOM	RANDOM	1 X 1 GRID—RANDOM	14, 54, 55, 65	77, 84-85, 89	00380893	00380896
TRANSITIONS SKINNY STRIPE DARK	00334977	00338196	RANDOM	RANDOM	1 X 1 GRID—RANDOM	11, 14, 54, 65	72-73, 89	00380894	00380897



## SPECIFICATIONS

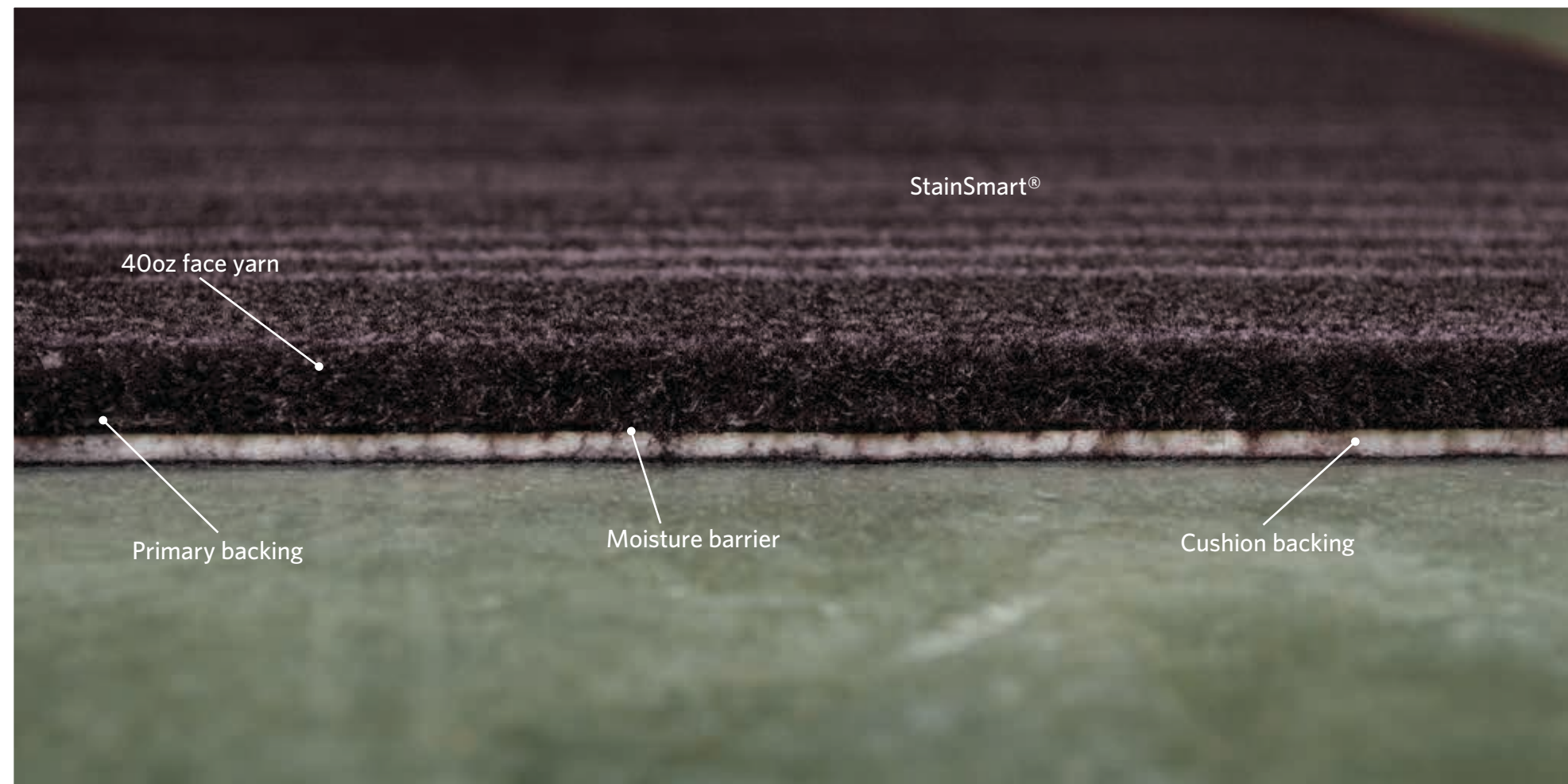
**FACE WEIGHT** — With carpet tile, some manufacturers quote total weight and some quote face weight. Milliken reveals both. Moment is available in 36oz and 40oz face weight.

**BACKING** — There are various backing types with different tile options. All Milliken tile comes standard with attached pvc-free polyurethane cushion.

**DIMENSIONAL STABILITY** — For carpet tile, it is imperative that the tile remain flat and dimensionally stable and secure to the floor under extreme conditions (humidity, temperature, & rolling traction). All Milliken modular carpet products are certified with the Aachen test and pass for dimensional stability.

**STAIN AND SOIL PROTECTION** — Food and beverage spills in public environments require product performance enhancements to help with long term cleanability and overall appearance. All Milliken carpet products include as standard our StainSmart® technology- a chemically bonded stain and soil resist technology.

**MOISTURE BARRIER** — For added performance, the product is standard with a barrier layer that prevents moisture from penetrating through the backing.



## Grand Plaza® 36

**Construction**  
Tufted, Patterned Cut-Pile Carpet Tile

**Dye Method**  
Digital Millitron® Dye Injection

**Tile Size**  
36" x 36" (914.4 x 914.4 mm.)

**Yarn Type**  
Milliken WearOn® BCF Nylon Type 6,6

**Stain Resist / Soil Release**  
StainSmart®

**Tufted Face Weight**  
36 oz./sq.yd. (1,220.7 g./sq.m.)

**Finished Pile Height**  
0.25 in. sheared (6.4 mm.)

**Average Density**  
5,184

**Standard Backing**  
PVC-Free Comfort Plus® ES  
Cushion Secondary with Synthetic  
Woven/Non-Woven Composite  
Primary

### Recommended Installation Methods



MONOLITHIC

## Grand Plaza® 40

**Construction**  
Tufted, Patterned Cut-Pile Carpet Tile

**Dye Method**  
Digital Millitron® Dye Injection

**Tile Size**  
36" x 36" (914.4 x 914.4 mm.)

**Yarn Type**  
Milliken WearOn® BCF Nylon Type 6,6

**Stain Resist / Soil Release**  
StainSmart®

**Tufted Face Weight**  
40 oz./sq.yd. (1,356.3 g./sq.m.)

**Finished Pile Height**  
0.25 in. sheared (6.4 mm.)

**Average Density**  
5,879

**Standard Backing**  
PVC-Free Comfort Plus® ES  
Cushion Secondary with Synthetic  
Woven/Non-Woven Composite  
Primary

### Recommended Installation Methods



MONOLITHIC





Gold or Platinum Certified  
NSFANSI 140-2007  
Sustainable Carpet Recycled



**Growing greener for over 100 years.**  
Visit [milliken.com](http://milliken.com) for more information.

800.334.7749 (USA and Canada) | [millikencarpet.com](http://millikencarpet.com)  
Design © Milliken & Company | Made in the USA