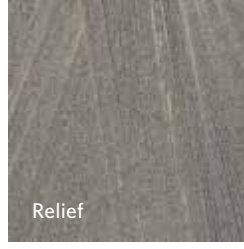
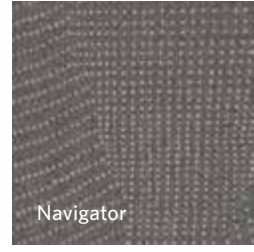
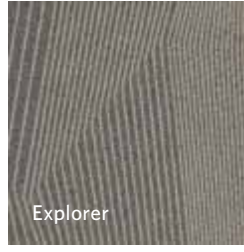


# MORaine

Explorer / Navigator  
Relief / Regions



Milliken™

0  
50  
100  
150

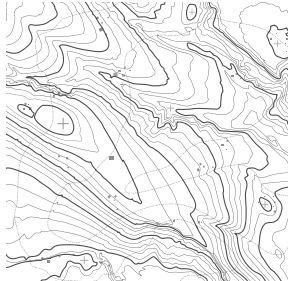
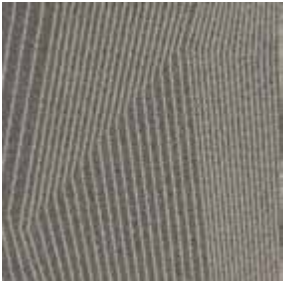
100 ▲

**INSPIRED.**

Maps identify location and help us to navigate the Earth's surface. Thousands of years of sediment defined by glacial movement and continental shifts create the topography we explore. The variety of regions come to life through dynamic terrain and unique surface qualities that morph our experience. This contrast of contours creates a geological rhythm and surface quality that makes each step a first for all.

MORaine PATTERNS

**Explorer**



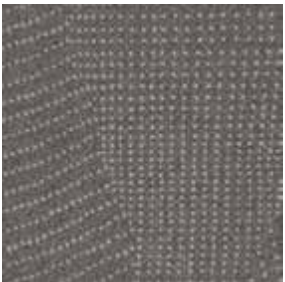
Explorer is the geometric abstraction of the organic contour lines within a topographical map. It is a modern take on an ageless cartographic medium that is both familiar and innovative.

**Relief**



Relief acts as both the antithesis and complement to Explorer. Greater line density starts to create visual planes while emphasizing the geometry and rhythm of Explorer.

**Navigator**



Based on a 3-dimensional point field map, Navigator used a series of pixel points to create plane and perspective within a single tile. A combination of tiles create a dynamic terrain comprised of tilting and shifting visual planes.

**Regions**

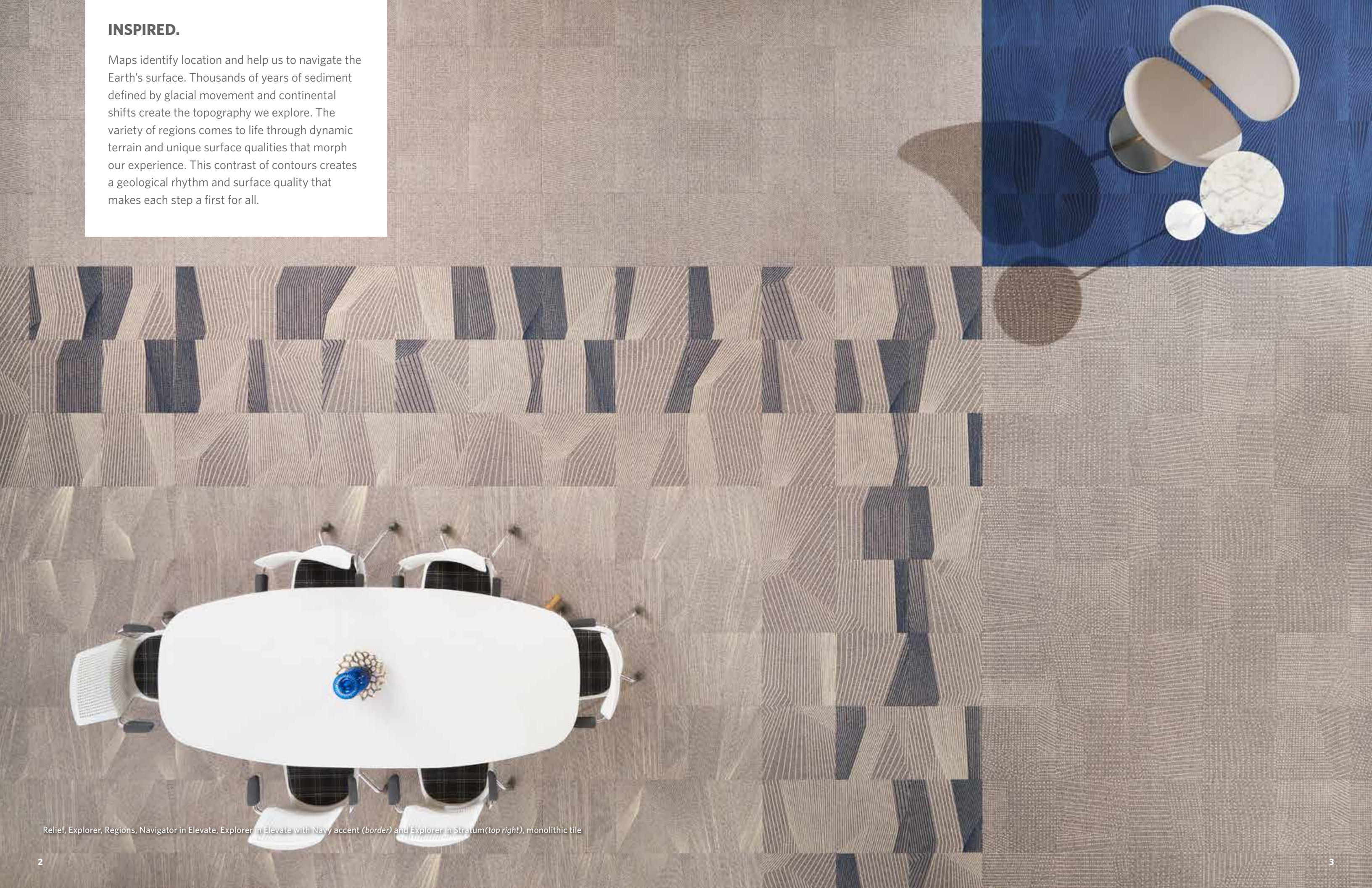


Regions shifts the scale and density of Navigator. What once felt like a textural abstraction of a 3-dimensional plan, now takes on its own unique surface quality.

Relief, Explorer, Regions, Navigator in Elevate, Explorer in Elevate with Navy accent (border) and Explorer in Stratum(top right), monolithic tile

## INSPIRED.

Maps identify location and help us to navigate the Earth's surface. Thousands of years of sediment defined by glacial movement and continental shifts create the topography we explore. The variety of regions comes to life through dynamic terrain and unique surface qualities that morph our experience. This contrast of contours creates a geological rhythm and surface quality that makes each step a first for all.



Explorer in Elevate, monolithic tile



Relief in Elevate, monolithic tile

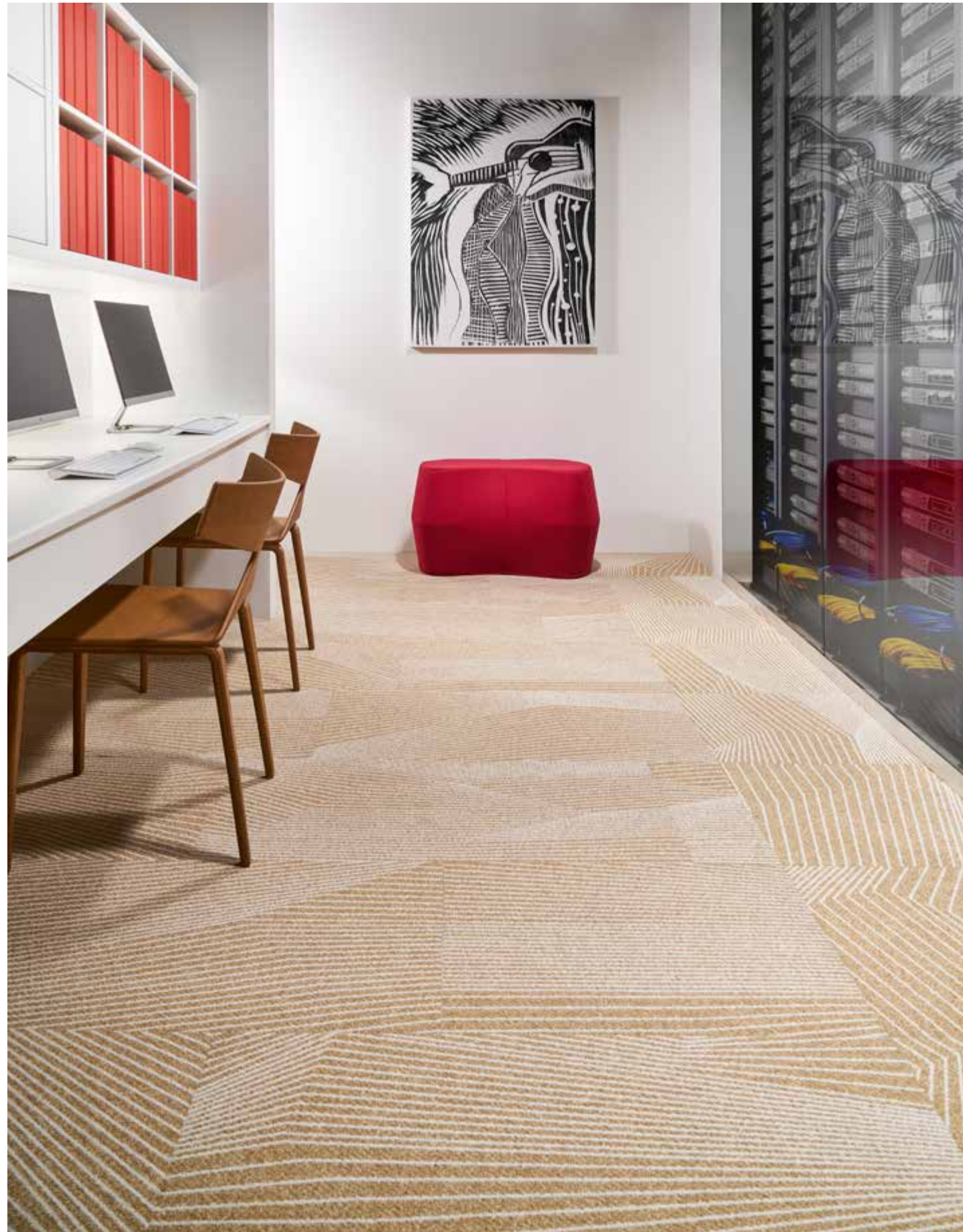


Navigator in Elevate, monolithic tile



Regions in Elevate, monolithic tile

Relief, Explorer, Regions, Navigator in Elevate, Explorer in Elevate with Navy accent (border) and Explorer in Stratum (top right), monolithic tile



Explorer in Edges, 50cm x 1m ashlar plank (left), 50cm monolithic tile (right border)

Get more at [millikenfloors.com](http://millikenfloors.com)



Explorer in Edges and Contour (alternating bands), 50cm x 1m herringbone plank

**INSPIRING.**

Four patterns offer a range of geometric abstractions and density of line to create new planes and textures for the floor.

Each pattern is offered in 18 standard colors.

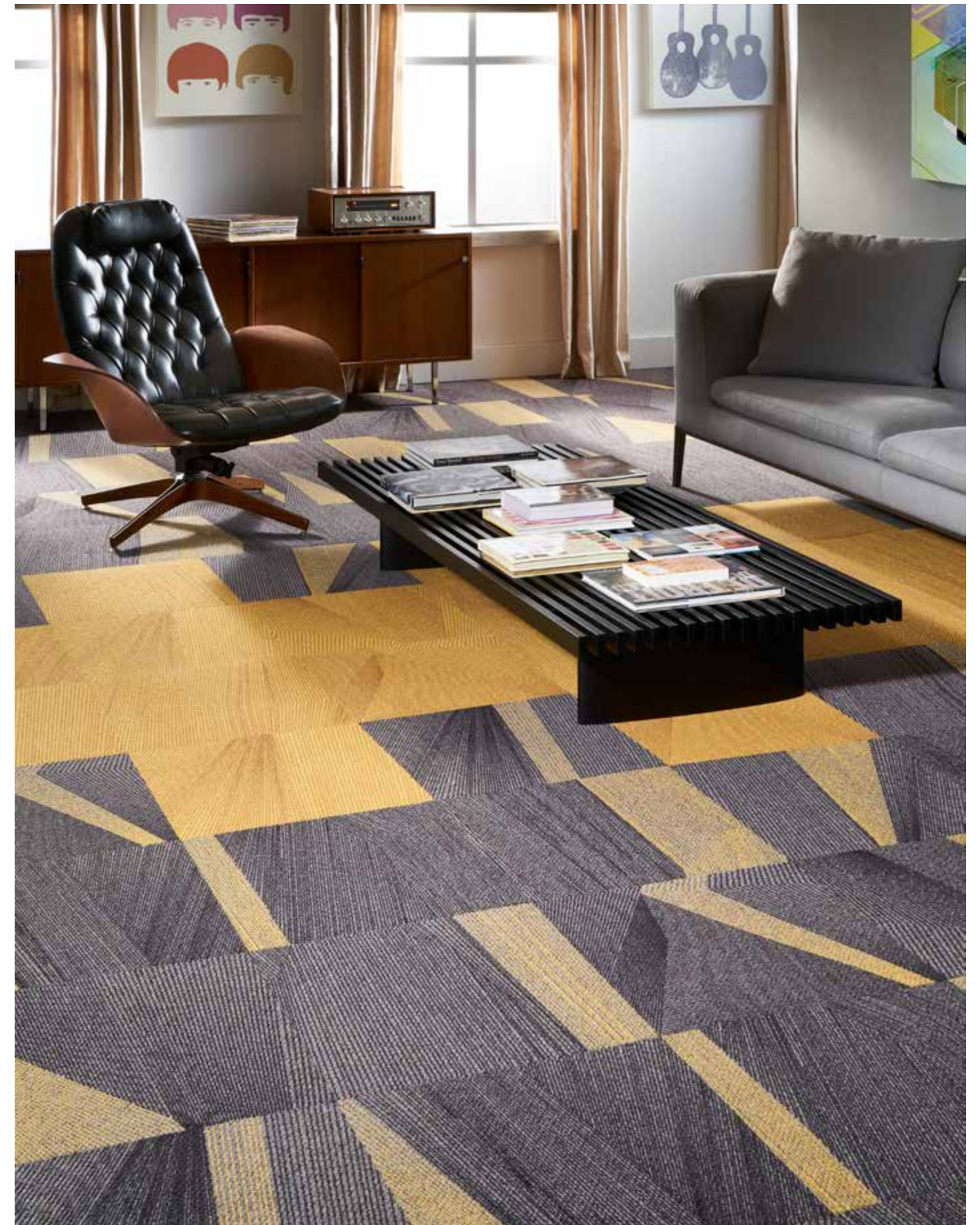
The 12 neutrals in these standard colors can be easily enhanced with one of eight accents.

Get more at [millikenfloors.com](http://millikenfloors.com)

Regions in Measure with Navy accent and LVT Charlotte in CHT108, monolithic tile



Explorer and Relief in Measure (random mix), monolithic tile



Relief in Extent (under coffee table) and in Measure with Gold accent, monolithic tile



Explorer in Breakline and Measure with White, 50cm x 1m vertical ashlar plank



Get more at [millikenfloors.com](http://millikenfloors.com)

Navigator and Regions in Formation (random mix), monolithic tile

# ACCENTUATE YOUR STYLE

Each of the **12 neutral** colorways in the Moraine collection can be enhanced with an accent from one of **six bright** colors, **black**, or **white**. Use them to delineate spaces, simplify way-finding, or just to add a splash of color to any space.

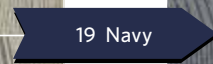


Explorer



EXR13-6 ELEVATE

Explorer with Accent

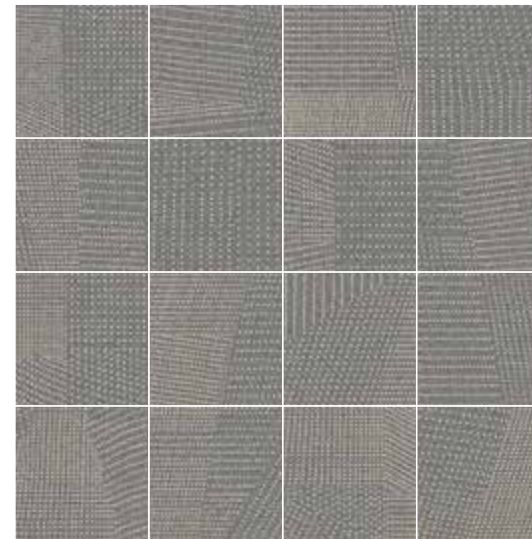


EXR19-13-6 ELEVATE WITH NAVY

The examples shown here indicate the accented areas for each pattern in Moraine. Each multi-tile pattern repeat has predetermined areas that will receive the accent color in each tile.

Contact your sales representative to order a sample of your unique color combination.

Navigator



NAV13-6 ELEVATE

Navigator with Accent



NAV19-13-6 ELEVATE WITH NAVY

Relief



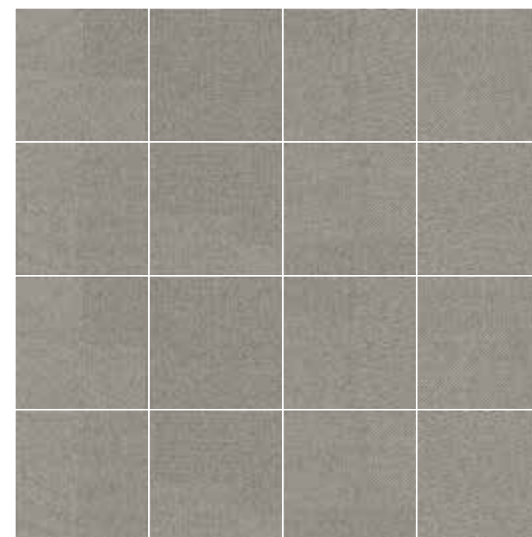
REF13-6 ELEVATE

Relief with Accent



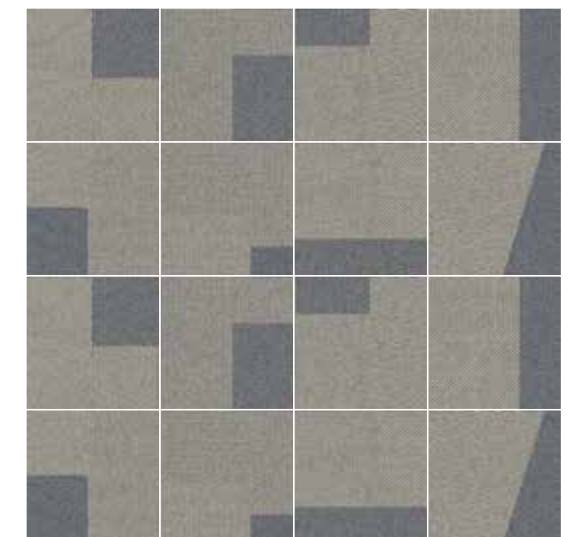
REF19-13-6 ELEVATE WITH NAVY

Regions



REG13-6 ELEVATE

Regions with Accent

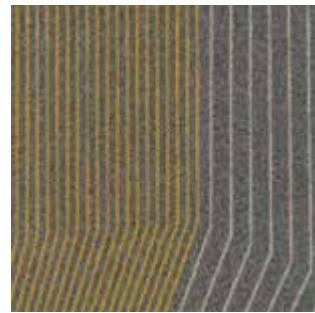


REG19-13-6 ELEVATE WITH NAVY

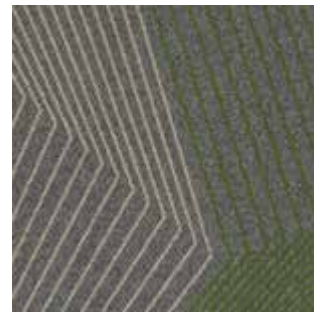


# ACCENT EXAMPLES

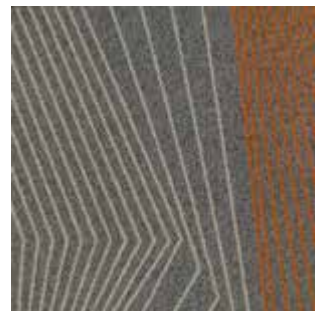
Color Elevate with All 8 Available Accents



EXR231-13-6 ELEVATE WITH GOLD



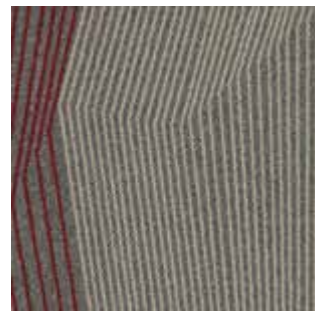
EXR141-13-6 ELEVATE WITH GREEN



EXR252-13-6 ELEVATE WITH ORANGE



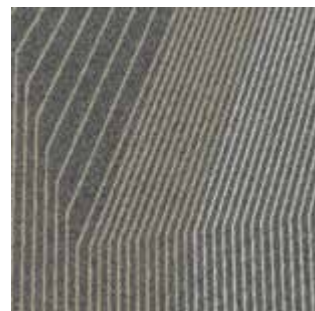
EXR201-13-6 ELEVATE WITH TEAL



EXR109-13-6 ELEVATE WITH BURGUNDY



EXR19-13-6 ELEVATE WITH NAVY



EXR215-13-6 ELEVATE WITH WHITE



EXR133-13-6 ELEVATE WITH BLACK

# COLOR LINE

Neutrals



EXR15 EDGES (Navigator NAV15, Regions REG15, Relief REF15)



EXR13-6 ELEVATE (Navigator NAV6, Regions REG6, Relief REF6)



EXR118-48 STRUCTURE (Navigator NAV118-48, Regions REG118-48, Relief REF118-48)



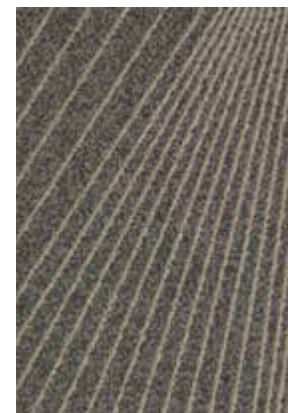
EXR133-4 BREAKLINE (Navigator NAV133-4, Regions REG133-4, Relief REF133-4)



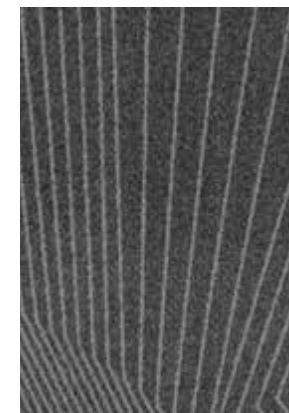
EXR21-90 POINT (Navigator NAV21-90, Regions REG21-90, Relief REF21-90)



EXR48-44 CONTOUR (Navigator NAV48-44, Regions REG48-44, Relief REF48-44)



EXR6-153 ORIGIN (Navigator NAV6-153, Regions REG6-153, Relief REF6-153)



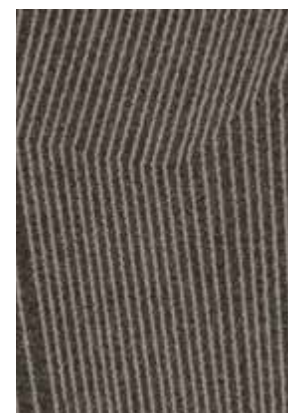
EXR180-119 BORDER (Navigator NAV180-119, Regions REG180-119, Relief REF180-119)



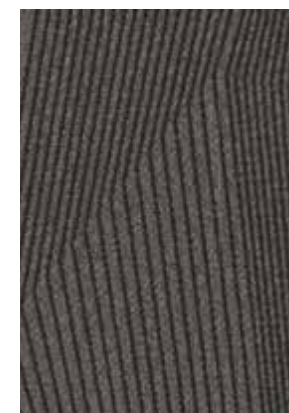
EXR10-44 PLAT (Navigator NAV10-44, Regions REG10-44, Relief REF10-44)



EXR59 FORMATION (Navigator NAV59, Regions REG59, Relief REF59)



EXR145 TERRAIN (Navigator NAV145, Regions REG145, Relief REF145)



EXR133-6 MEASURE (Navigator NAV133-6, Regions REG133-6, Relief REF133-6)

Brights\*



EXR98-231 EXTENT (Navigator NAV98-231, Regions REG98-231, Relief REF98-231)



EXR141-202 CONFIGURE (Navigator NAV141-202, Regions REG141-202, Relief REF141-202)



EXR252 FRONTIER (Navigator NAV252, Regions REG252, Relief REF252)



EXR201-229 AERIAL (Navigator NAV201-229, Regions REG201-229, Relief REF201-229)



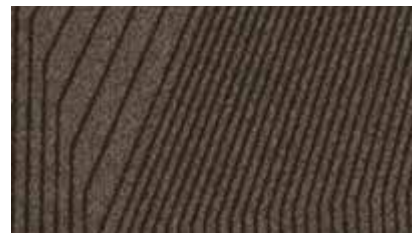
EXR82-109 RIM (Navigator NAV82-109, Regions REG82-109, Relief REF82-109)



EXR123-19 STRATUM (Navigator NAV123-19, Regions REG123-19, Relief REF123-19)

\*Brights should only be used for accents, borders or other small areas

Explorer



EXR10-44 PLAT



EXR21-90 POINT



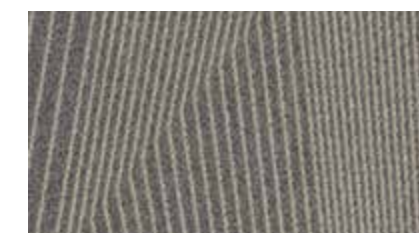
EXR15 EDGES



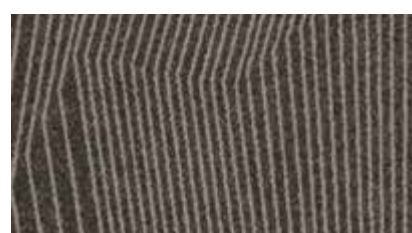
EXR59 FORMATION



EXR48-44 CONTOUR



EXR13-6 ELEVATE



EXR145 TERRAIN



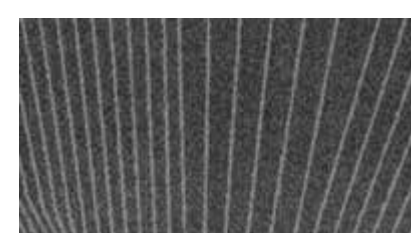
EXR6-153 ORIGIN



EXR118-48 STRUCTURE



EXR133-6 MEASURE



EXR180-119 BORDER



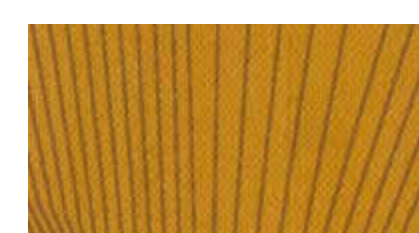
EXR133-4 BREAKLINE



EXR82-109 RIM



EXR252 FRONTIER



EXR98-231 EXTENT



EXR123-19 STRATUM



EXR201-229 AERIAL

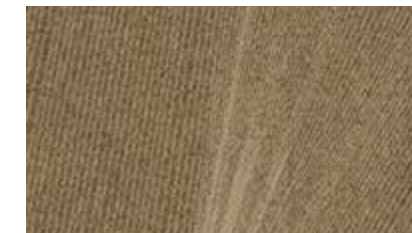


EXR141-202 CONFIGURE

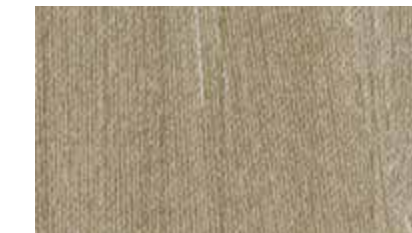
Relief



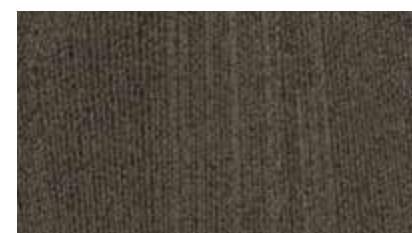
REF10-44 PLAT



REF21-90 POINT



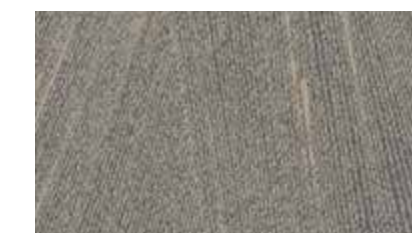
REF15 EDGES



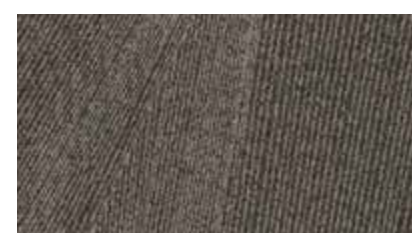
REF59 FORMATION



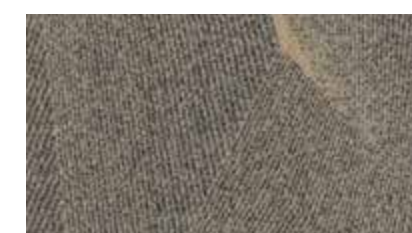
REF48-44 CONTOUR



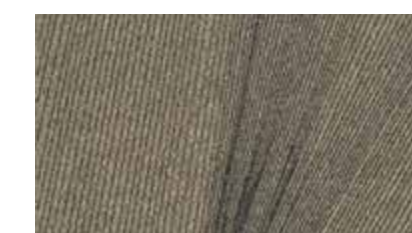
REF13-6 ELEVATE



REF145 TERRAIN



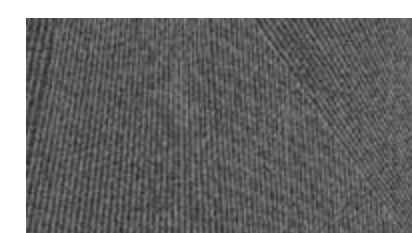
REF6-153 ORIGIN



REF118-48 STRUCTURE



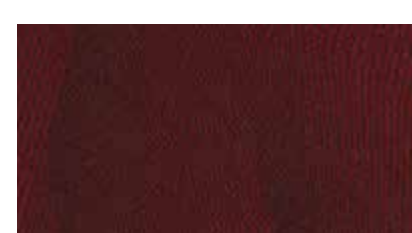
REF133-6 MEASURE



REF180-119 BORDER



REF133-4 BREAKLINE



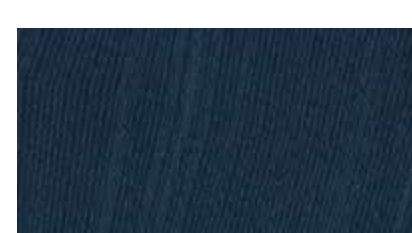
REF82-109 RIM



REF252 FRONTIER



REF98-231 EXTENT



REF123-19 STRATUM



REF201-229 AERIAL



REF141-202 CONFIGURE

Navigator



NAV10-44 PLAT



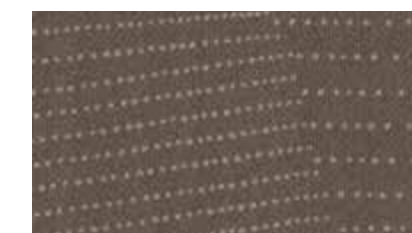
NAV21-90 POINT



NAV15 EDGES



NAV59 FORMATION



NAV48-44 CONTOUR



NAV13-6 ELEVATE



NAV145 TERRAIN



NAV6-153 ORIGIN



NAV118-48 STRUCTURE



NAV133-6 MEASURE



NAV180-119 BORDER



NAV133-4 BREAKLINE



NAV82-109 RIM



NAV252 FRONTIER



NAV98-231 EXTENT



NAV123-19 STRATUM

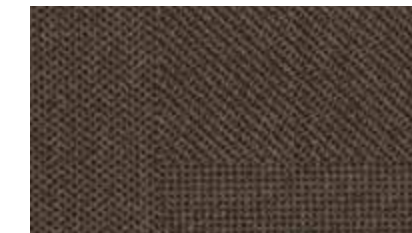


NAV201-229 AERIAL



NAV141-202 CONFIGURE

Regions



REG10-44 PLAT



REG21-90 POINT



REG15 EDGES



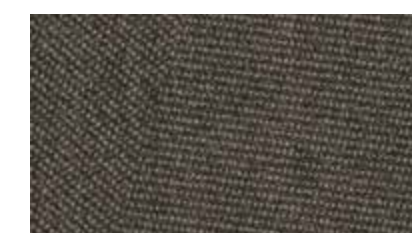
REG59 FORMATION



REG48-44 CONTOUR



REG13-6 ELEVATE



REG145 TERRAIN



REG6-153 ORIGIN



REG118-48 STRUCTURE



REG133-6 MEASURE



REG180-119 BORDER



REG133-4 BREAKLINE



REG82-109 RIM



REG252 FRONTIER



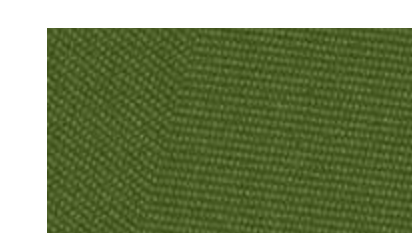
REG98-231 EXTENT



REG123-19 STRATUM



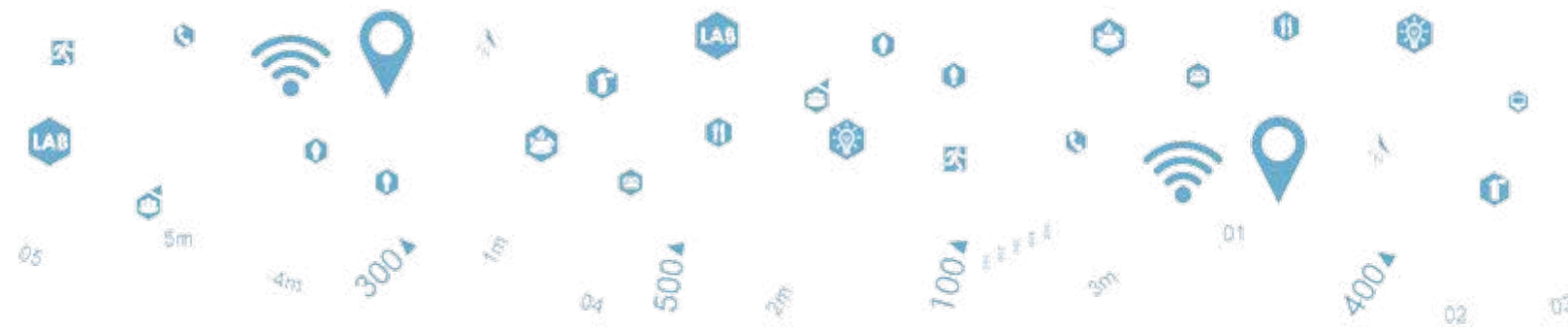
REG201-229 AERIAL



REG141-202 CONFIGURE



## ADDITIONAL CUSTOMIZATION OPTIONS



Patterns in Moraine can be completely customized to allow for more useful applications in wayfinding or branding. Overlay graphics or text using the accent colors to create a truly unique installation. This can be used to designate areas, deliver messages, or just create a more appealing interior.

Adding unique graphics to your project requires a minimum yardage and additional lead time. Please contact your Milliken sales representative to start your own custom design.



CUSTOM NAVIGATOR - SYMBOLS



CUSTOM NAVIGATOR - NUMBERS



CUSTOM NAVIGATOR - ZONES

# Complete Flooring Solutions



Milliken Floor Covering offers products and expertise in all areas of your commercial spaces, including high-performance entryway systems, broadloom & modular carpet, luxury vinyl tile, and milliCare®. Simplify your flooring needs with a trusted partner that will let you enjoy creating a great space without having to worry about everything else.



## Entry Systems

The OBEX® brand of products offers highly effective, comprehensive modular entry solutions designed as a three-zone barrier system to prevent dirt and moisture from entering the building.

Available in coordinated colors and patterns, OBEX® entry products are engineered to increase the functionality of a building's entrance without forsaking elements of design or aesthetic. Simple and easy to work with, OBEX® offers entry systems that can be recessed or surface-mounted as well as exterior and interior applications.



## Broadloom & Modular Carpet

Milliken's broadloom and carpet tile incorporate the latest innovations in tufting and dyeing technology, achieving unique looks and excellent performance. With our Color Reference system, coordinating multiple products across a single project is a snap; whether it's carpet, LVT, or entry systems. All carpet tile products have cushion backing for an extended lifespan, as well as ergonomic and environmental benefits. Broadloom carpet also has cushion-back options, and all are standard with StainSmart®, a proprietary treatment applied to Milliken carpets to repel and protect against stains and enhance soil release.



## Luxury Vinyl Tile

From natural looks of wood and stone to more modern textures and abstracts, Milliken's collection of Luxury Vinyl Tile flooring creates new options for a commercial or hospitality interior. Our simple-to-search Color Reference system provides easy coordination of the LVT options to modular and broadloom carpets. From carpet tile to broadloom to planks to LVT, Milliken provides durable and elegant options for your project.



## milliCare®

We care for the environment with products and a method that improve Indoor Air Quality and reduce water consumption and your carbon footprint. We care about you professionally by saving you time through customized service plans for your entire space provided for by our franchise network. You work healthier and live healthier, and the planet is a better place because of it. We can bring that same quality of care and service to you wherever you are. milliCare takes caring for your flooring and textiles off your to-do list, which means that you get to skip right to the part where you get to lean back, put your hands behind your head, and be a hero for keeping a beautifully cleaned space.

# MORAINE

Explorer / Navigator / Regions / Relief

Images in this brochure are approximate for color and pattern scale. Please use actual carpet samples to make your final selections.

Have you seen our other collections? Visit us online today.



Arctic Survey



Color Field Patina



Freelay LVT



Lapidus



## Construction

Tufted, Textured Loop

## Tile Sizes

50 cm x 50 cm (19.7" x 19.7")

50 cm x 1 m (19.7" x 39.4")

## Yarn Type

Milliken-Certified WearOn® Nylon  
Type 6,6

## Stain Repel & Resist / Soil Release

StainSmart®

## Standard Backing

PVC-Free Underscore™ ES Cushion

Underscore™ is available with TractionBack®

## Texture Appearance Retention

Rating (TARR)

Severe

## Recommended Installation Methods



MONOLITHIC PLANKS

## TractionBack®

Simplify your modular installation with Milliken's patented TractionBack®, an innovative backing system that is faster, more cost efficient, and environmentally superior to wet adhesives and peel-and-stick carpet tile.



This cushion-back carpet tile product is covered by one or more patents, published applications and/or patents pending. Specifications are subject to normal manufacturing tolerances and may be changed without prior notice.

## Growing greener for over 100 years.

This product has a UL® Environment 3<sup>rd</sup> party verified Environmental Product Declaration (EPD). A copy of the EPD is available online at [millikencarpet.com/epd](http://millikencarpet.com/epd) and [productguide.ulenvironment.com](http://productguide.ulenvironment.com).

Customer Concierge 800.824.2246 | [millikenfloors.com](http://millikenfloors.com)  
© 2016 Milliken & Company | Design © Milliken & Company | Made in the USA

Cover image: *Topography*, by Milliken Design.  
© 2016, Milliken & Company

27100XXXX  
CP 0117