



NATURALLY DRAWN

Drawing In Ink / Hand Sketched
Hand Sketched Transition
Watercolor Lesson



Drawing In Ink



Hand Sketched



Hand Sketched
Transition



Watercolor Lesson



Milliken™

150
years of Milliken

INSPIRED. INSPIRING.

"Art takes nature as its model." Aristotle

From nature's calendar to the artist's studio, from the outside to the inside, creative minds have joined to create three designs drawn from nature and reinterpreted through artistic expression. Watercolor Lesson, Drawing In Ink, Hand Sketched and Hand Sketched Transition, each one lovingly crafted through its artist's medium: watercolor, ink and pencil sketch. Four designs, each with a story to tell.







Drawing In Ink in Gulf Breeze/Pacific Slope, ashlar tile installation



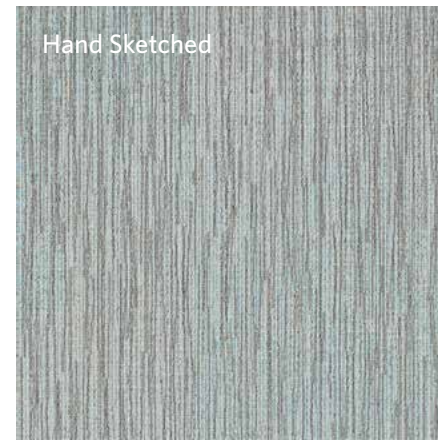
Hand Sketched in Gulf Breeze, ashlar tile installation

Hand Sketched & Hand Sketched Transition

Hand Sketched is created with free-flowing fine pencil lines by the artist's own hand to form shifting ombré tones that undulate smoothly across the tile.

The Hand Sketched design is offered with a companion, accessory design, Hand Sketched Transition. The Hand Sketched Transition design enables an effortless color flow from one Hand Sketched color into the next, without hard lines or distracting color breaks.

Sometimes blending complementary colors, sometimes merging contrasting colors, Hand Sketched Transition allows you to create a smooth and continuous flow of organically changing color across the floor plane.



HSK93-139 GULF BREEZE



HST93-172-139 GULF BREEZE/PACIFIC SLOPE



HSK93-172 PACIFIC SLOPE



HSB172-93-139 PACIFIC SLOPE/GULF BREEZE



Hand Sketched in Gulf Breeze (top), Hand Sketched Transition in Gulf Breeze/Pacific Slope (middle), Hand Sketched in Pacific Slope (bottom), ashlar tile installation



Hand Sketched Transition, Hand Sketched and Watercolor Lesson, ashlar & monolithic tile installation

Coordination from Top to Bottom

While Hand Sketch Transition is coordinated for smooth gradients between Hand Sketched colors, Drawing In Ink and Watercolor Lesson are also designed to easily coordinate with the Hand Sketched colorline while creating dramatically different visual effects. Use the full kit of parts in different areas of a project to define spaces while maintaining tight coordination throughout.





(top to bottom) Drawing In Ink in Antique Sand / Vintage Taupe, Hand Sketched in Vintage Taupe, and Watercolor Lesson in Vintage Taupe, ashlar tile installation

The inspiration for Naturally Drawn was the colors and lines of nature reinterpreted through the exquisite and delicate mediums of watercolor, ink, and hand-drawing.



Hand Sketched



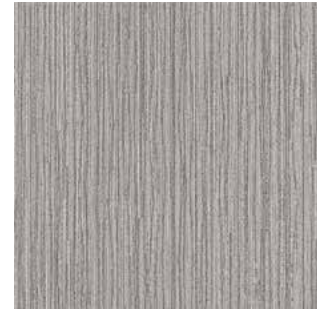
HSK124-15 ANTIQUE SAND



HSK98-96 MORNING BLEND



HSK173 SPOTTED DOVE



HSK144-108 SHELL BROWN



HSK154-106 BLUE DAWN



HSK139-153 DUNGAREE



HSK93-139 GULF BREEZE



HSK64-21 LIME PEEL

Hand Sketched Transition (Top)



HST15-124-44 ANTIQUE SAND/VINTAGE TAUPE



HST98-96-26 MORNING BLEND/CANYON RED



HST173-94 SPOTTED DOVE/TINSMITH



HST144-108-114 SHELL BROWN/PEPPERCORN



HST73-154-106 BLUE DAWN/HARBOR GREY



HST139-118-153 DUNGAREE/PENCIL GREY



HST93-172-139 GULF BREEZE/PACIFIC SLOPE



HST64-45-21 LIME PEEL/TOPIARY

Hand Sketched



HSK124-44 VINTAGE TAUPE



HSK102-26 CANYON RED



HSK94 TINSMITH



HSK174-108 PEPPERCORN



HSK73-154 HARBOR GREY



HSK118-153 PENCIL GREY



HSK93-172 PACIFIC SLOPE



HSK64-45 TOPIARY

Hand Sketched Transition (Bottom)



HSB124-15-44 VINTAGE TAUPE/ANTIQUÉ SAND



HSB96-98-26 CANYON RED/MORNING BLEND



HSB94-173 TINSMITH/SPOTTED DOVE



HSB108-144-114 PEPPERCORN/SHELL BROWN



HSB154-73-106 HARBOR GREY/BLUE DAWN



HSB118-139-153 PENCIL GREY/DUNGAREE



HSB172-93-139 PACIFIC SLOPE/GULF BREEZE



HSB45-64-21 TOPIARY/LIME PEEL

Watercolor Lesson



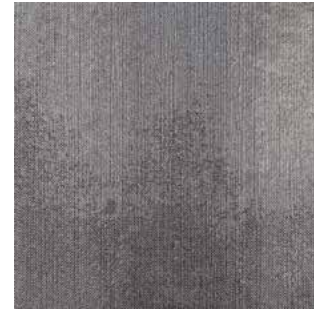
WLN21-12 ANTIQUE SAND



WLN15-114 MORNING BLEND



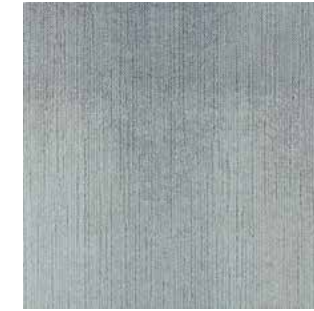
WLN144-83 SPOTTED DOVE



WLN118-165 SHELL BROWN



WLN73-153 BLUE DAWN



WLN158-139 DUNGAREE



WLN139-172 GULF BREEZE



WLN45-21 LIME PEEL



WLN21-124 VINTAGE TAUPE



WLN26-102 CANYON RED



WLN59-145 TINSMITH



WLN13-79 PEPPERCORN



WLN19-73 HARBOR GREY



WLN25-132 PENCIL GREY



WLN132-46 PACIFIC SLOPE



WLN64-21 TOPIARY

Drawing In Ink



DWK44-15 ANTIQUE SAND/
VINTAGE TAUPE



DWK82-102-26 MORNING
BLEND/CANYON RED



DWK94-68 SPOTTED DOVE/
TINSMITH



DWK165-79 SHELL BROWN/
PEPPERCORN



DWK118-73 BLUE DAWN/
HARBOR GREY



DWK 139-153 DUNGAREE/
PENCIL GREY



DWK79-174-172 GULF BREEZE/
PACIFIC SLOPE



DWK64-81 LIME PEEL/
TOPIARY

Advantages of Milliken Carpet Tile



Cushion Backing

Comfort Plus® & Underscore™ are Milliken's latest generation cushion backing systems and are standard on Milliken modular carpet products. In addition to providing superior underfoot comfort and significantly improving the carpet's wear performance, these cushion backings also offer ergonomic, acoustic, and environmental benefits.

Milliken cushion backing protects the carpet face from wear and can extend the carpet's life by up to 40%. Acting like an insulating shock absorber, Milliken cushion backings protect against wear, improve appearance retention and enhance comfort and safety. Cushion backing also helps Milliken carpets earn test ratings of Severe in the TARR system.

Milliken cushion-backed carpet tiles are unmatched in moisture management. They stop liquids at the surface and wick moisture away from the sub-floor thereby reducing conditions for mold and mildew growth. By allowing high levels of moisture to be transported through the tile, Milliken modular tiles can handle water vapor emissions up to 85% relative humidity. This unique feature eliminates one less worry about carpet in a high-humidity environment.

Cushion Improves Acoustics

Much emphasis is placed on the need to reduce unwanted noise in corporate and public spaces. Reducing noise levels can improve comfort, well-being, the ability to concentrate and yield higher performance and productivity. Milliken cushion-backed tiles achieve an improvement in sound absorption performance by absorbing sounds across a wide range of frequencies including those most associated with human speech. Milliken's cushioned carpet tiles absorb up to 50% more noise than hard-backed carpets and up to 12X more than hard surface and rubber flooring. Better yet, the new LEED v4 rewards designers for providing spaces that facilitate better communications by offering up to 2 LEED points. Clearly, acoustics matter.



TractionBack®

TractionBack® is a remarkable bio-based, high-friction coating that keeps our PVC-free carpet tile securely in-place without additional adhesives, floor sealers or primers. Applied during the manufacturing process, carpet tiles with TractionBack® require no manipulation, additional taping, or gluing steps in the field. Ready to install out-of-the-box makes installation, moving, or replacing Milliken carpet easier on you and the environment.

- Reduces or eliminates the need to prime or seal the floor
- Reduces or eliminates adhesive cost and saves on installation labor
- Eliminates the tools and labor to add other attachment mechanisms to the carpet tile
- Reduces or eliminates time spent spreading wet adhesives and waiting to dry
- Eliminates unnecessary waste like 'peel and stick' film covers
- Reduces or eliminates VOC off-gassing typically associated with floor sealants and adhesives
- allowing faster carpet installation and space habitation
- Stays in place even under high water vapor emissions
- Allows high levels of moisture to be transported through the tile
- Reduces or eliminates damage to raised access floors and high-quality sub-floors, leaving little or no residue
- Tiles can be lifted and re-placed multiple times without losing traction effect



Sustainable

At Milliken, sustainability is core to our culture. We believe a healthy enterprise and healthy earth are vitally linked. We care about and respect each other, our customers, and the world we share. While we hold ourselves accountable to the highest ethical standards, we derive our greatest satisfaction from creating innovations that help solve the worlds' problems at a human level—adding value to people's lives, improving health and safety, and making this world sustainable.

Milliken has also demonstrated a commitment to transparency by disclosing the components of our commercial carpet tile products through Declare®, a voluntary labeling program and database operated by the International Living Future Institute™, and complies with the Red List Imperative of the Living Building Challenge™.

Examples of Our Commitment:

- Zero waste to the landfill from our Milliken US carpet manufacturing facilities since 1992.
- 46% of the energy used in the manufacture of our carpet is renewable through company owned hydroelectric facilities and local landfill methane gas harvesting.
- Milliken Carpet tile products have Environmental Product Declarations (EPD's) that are third party certified by Underwriters Laboratory (UL).
- All Milliken Carpet products are free of the 15 Red List chemicals defined in the Living Building Challenge.
- All global Milliken products are third-party certified carbon neutral by the Leonardo Academy. Carbon dioxide created in the manufacturing of all Milliken products globally is offset through company owned sustainably managed forests and green energy producing facilities.
- Product Life Cycle Assessments (LCA) are used for New Product Development. Milliken has used the Design for Environment (DfE) process for our commercial carpet products since 2002.
- Our polyurethane backed cushion increases the life of carpet more than 40%.
- All Milliken Carpet products are 3rd party certified NSF-140 Gold or Platinum.
- All U.S. plants are certified as OSHA VPP STAR Sites.
- All carpet manufacturing sites are ISO-14001 Certified—the highest global standard for environmental responsibility.
- First US carpet manufacturer to obtain carpet manufacturing certification for the ISO 9000 Series Standard for quality.



StainSmart®

StainSmart® is a proprietary treatment applied to Milliken modular carpets to provide Stain Repel, Stain Resist and Soil Release characteristics. This treatment provides state-of-the-art protection against penetrating stains and soil. It's a dual action technology that enables liquid and oil-based spills to bead up and be easily removed from the carpet. The treatment becomes an inherent part of the carpet so it's durable over years of use, even in high traffic.

Stain Repel: StainSmart allows many liquid spills to be blotted and removed easily before they can penetrate beyond the carpet surface.

Stain Resist: This chemistry blocks the dye sites of the nylon fiber, lessening the ability of a stain to bond with the fiber.

Soil Release: Prevents soil from adhering to or imbedding in the fiber surface and enhances the efficiency of soil removal when proper cleaning techniques are followed.

Milliken warrants that carpet treated with StainSmart will resist soiling and staining during the lifetime* of the carpet. Proper maintenance is vital to the long-term effectiveness of the StainSmart treatment. Soaps used in wet-cleaning processes, especially spin bonnet, can cause rapid resoiling and effectively negate the protection built into the product. Milliken recommends the MilliCare® Textile and Carpet Care Service Network.

*Lifetime is defined as the period of time that the original purchaser of the carpet chooses to keep the carpet on the floor at the original installation site.

NATURALLY DRAWN

Drawing In Ink / Hand Sketched

Hand Sketched Transition / Watercolor Lesson

Have you seen our other collections? Visit us online today.



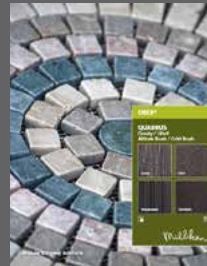
Ghost Artist



Kai



Lyceum



Quadrus



Construction

Tufted, Textured Loop

Tile Size

50 cm x 50 cm (19.7" x 19.7")

Yarn Type

Milliken-Certified WearOn® Nylon
Type 6,6

Stain Repel / Stain Resist / Soil Release

StainSmart®

Tufted Face Weight

15 oz/yd² (509 g/m²)

Finished Pile Height

0.08" (2.03 mm)

Average Density

6,541

Standard Backing

PVC-Free Underscore™ ES Cushion
Underscore™ is available with TractionBack®

Texture Appearance Retention Rating (TARR)

Severe

Recommended Installation Method



ASHLAR

TractionBack®

Simplify your modular installation with Milliken's patented TractionBack®, an innovative backing system that is faster, more cost efficient, and environmentally superior to wet adhesives and peel-and-stick carpet tile.



This cushion-back carpet tile product is covered by one or more patents, published applications and/or patents pending. Specifications are subject to normal manufacturing tolerances and may be changed without prior notice.

Growing greener for over 100 years.

This product has a UL® Environment 3rd party verified Environmental Product Declaration (EPD). A copy of the EPD is available online at millikencarpet.com/epd and productguide.ulenvironment.com.

Customer Concierge 800.824.2246 | millikenfloors.com
© 2014 Milliken & Company | Design © Milliken & Company | Made in the USA

Cover image: *Creation Sylvia Eustache Roofs, Bloom #20*, by Iris Velghe

2710025346
CP 0515