



**Orsay**  
BROADLOOM & MODULAR



[www.millikencarpets.com](http://www.millikencarpets.com)

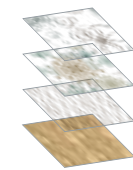
1.800.334.7749

Milliken Hospitality

étage™







étage™

When it's time to break away from traditional hospitality looks, look to étage technology. This all-new process builds a complex pattern, layer by layer. Creating a fully custom look is as simple as choosing and combining layers — layers of organic design elements that defy traditional ideas of symmetry, boxes and borders. Étage technology brings a kind of freedom of design never before known in the hospitality industry. Each collection includes small-, medium- and large-scale elements for ultimate flexibility in defining rugs, runners and open areas. Combine broadloom and modular and get the best of both. Freedom. Control. It's all here, waiting for an artist's touch. Exclusively from Milliken Hospitality.

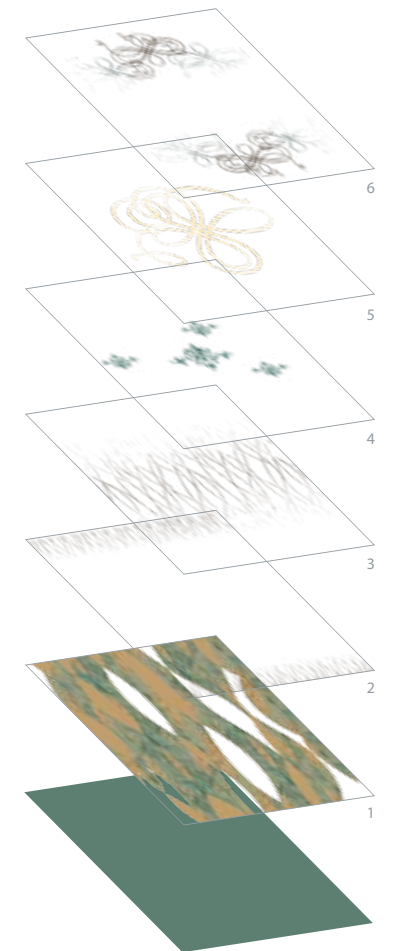
The Orsay Collection. As vibrant and unexpected as a Renoir. Combine layers of watercolor, neo-traditional pattern and freeform calligraphy for a signature effect like no other. You have ultimate control.



BROADLOOM RUG A

P/1410 C/1043  
81.00"W x 117.00"L

Image shown represents a full pattern repeat.



BACKGROUND



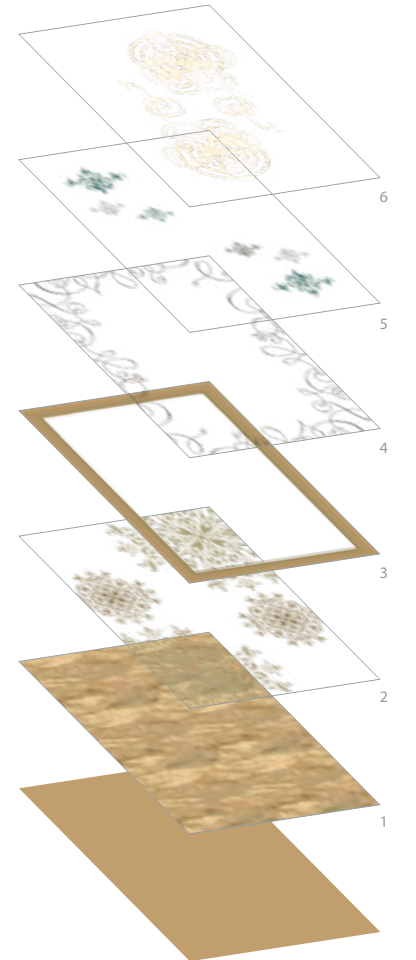
ALL COLORS ARE APPROXIMATIONS ONLY

- 1 2 3 4 5 6 7 8 9 10 11

BROADLOOM RUG B

P/1410 C/1044  
81.00"W x 117.00"L

Image shown represents a full pattern repeat.



BACKGROUND



- 1 2 3 4 5 6 7 8 9 10



BROADLOOM A

SMALL SCALE  
P/1410 C/1045  
10.80"W x 10.80"L

MEDIUM SCALE  
P/1410 C/1046  
18"W x 18"L

LARGE SCALE  
P/1410 C/1047  
40.50"W x 40.50"L

Lower right corner area  
represents a full pattern repeat.

SMALL SCALE



- 2 3 4 5 7 8 9 10 11

MEDIUM SCALE

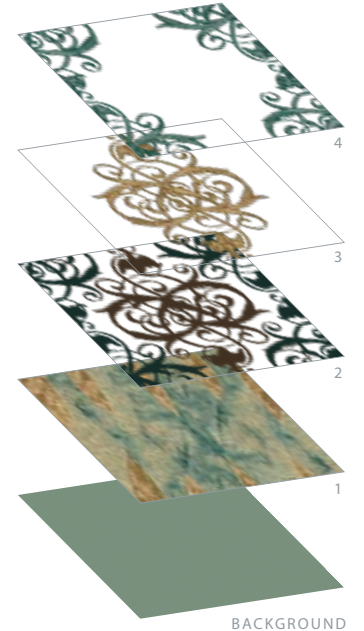


- 1 2 3 4 5 7 8 9 10 11

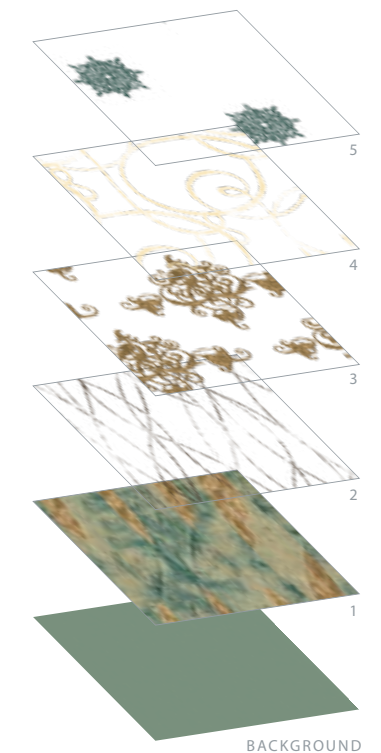
LARGE SCALE



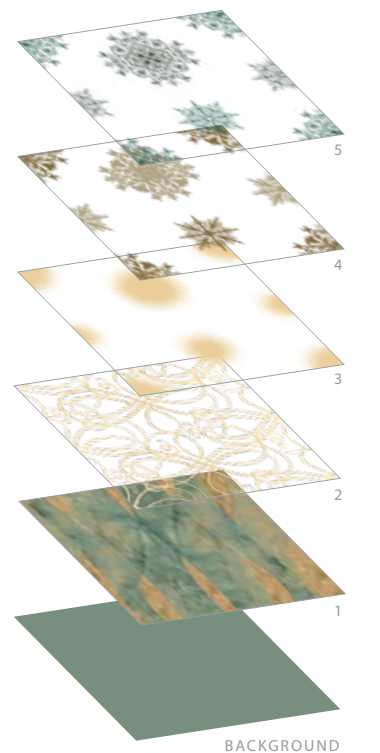
- 1 2 3 4 5 6 7 8 9 10



BACKGROUND



BACKGROUND



BACKGROUND



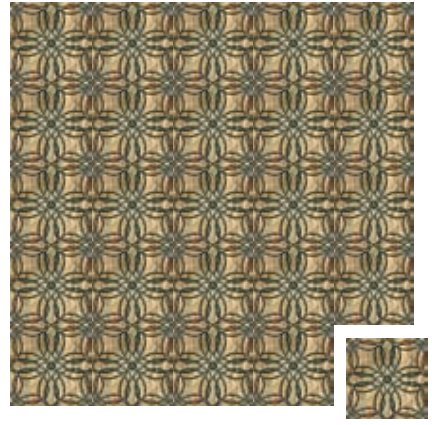
**BROADLOOM B**

SMALL SCALE

P/1410 C/1048

10.80"W x 10.80"L

SMALL SCALE



- 2
- 3
- 5
- 7
- 8
- 10
- 11

MEDIUM SCALE

P/1410 C/1049

18.00"W x 18.00"L

MEDIUM SCALE



- 2
- 3
- 4
- 5
- 6
- 7
- 10
- 11

LARGE SCALE

P/1410 C/1050

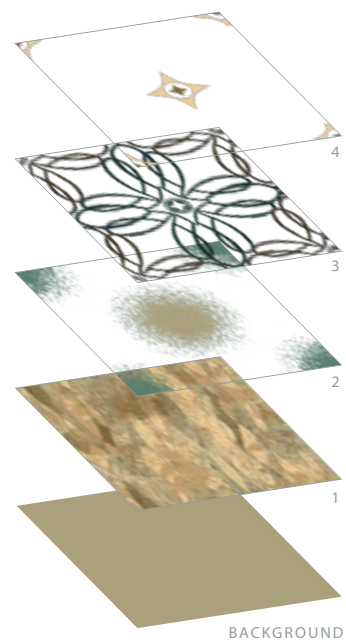
81.00"W x 81.00"L

LARGE SCALE

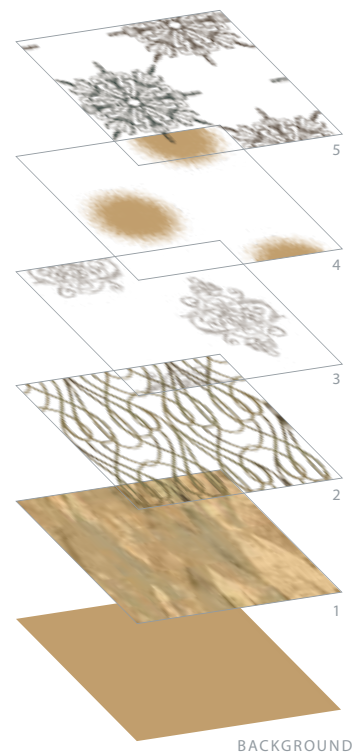


- 2
- 3
- 4
- 5
- 6
- 7
- 8
- 9
- 10
- 11

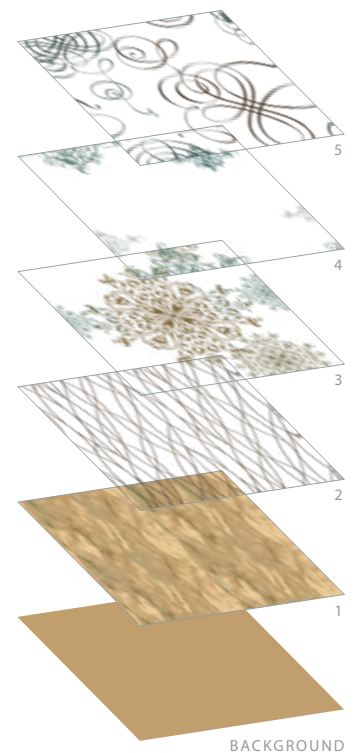
Lower right corner area represents a full pattern repeat.



BACKGROUND



BACKGROUND



BACKGROUND



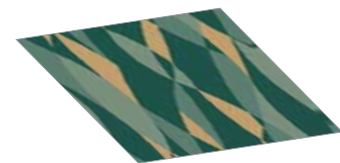
BROADLOOM TEXTURE FILL A

P/1410 C/1052  
9.00"W x 9.00"L

Lower right corner area  
represents a full pattern repeat.



- 3
- 4
- 8
- 9



BACKGROUND

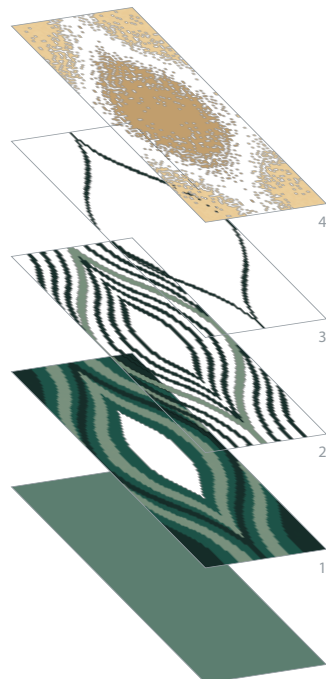
BROADLOOM TEXTURE FILL B

P/1410 C/1053  
3.00"W x 7.50"L

Lower right corner area  
represents a full pattern repeat.



- 2
- 3
- 4
- 8
- 9
- 11



BACKGROUND

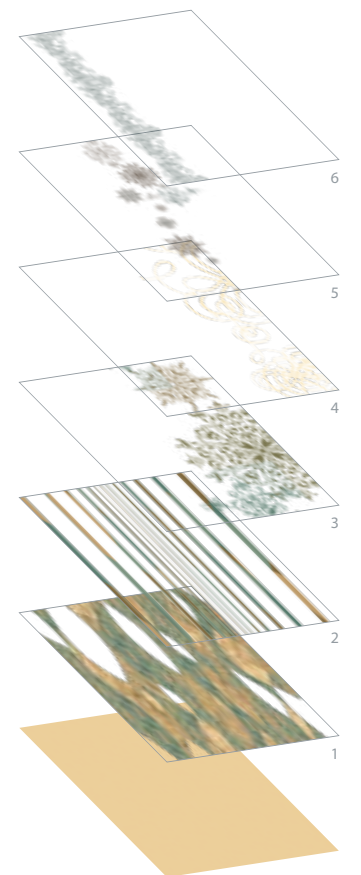


- 1
- 2
- 3
- 4
- 5
- 6
- 7
- 8
- 9
- 10
- 11

BROADLOOM RUNNER

P/1410 C/1051  
81.00"W x 108.00"L

Image shown represents a full pattern repeat.



BACKGROUND



MODULAR FIELD 1

FOUR TILE REPEAT

A

P/6698 C/891  
36.00"W x 36.00"L

B

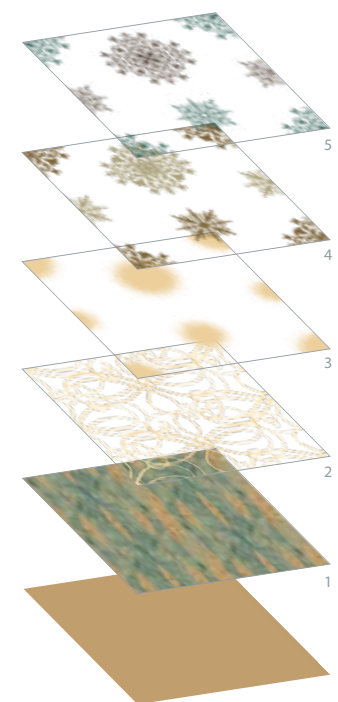
P/6698 C/892  
36.00"W x 36.00"L

C

P/6698 C/893  
36.00"W x 36.00"L

D

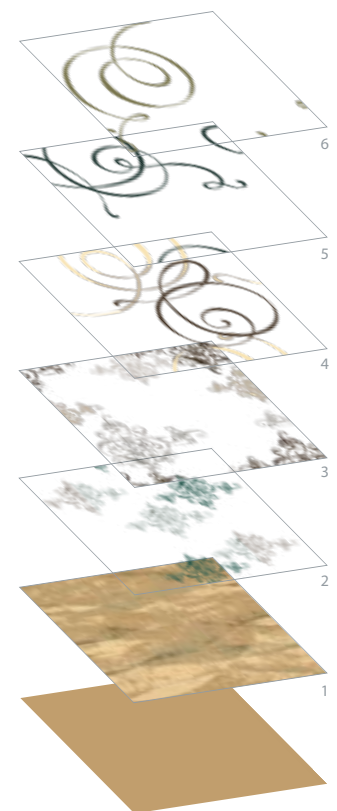
P/6698 C/894  
36.00"W x 36.00"L



BACKGROUND

MODULAR FIELD 2

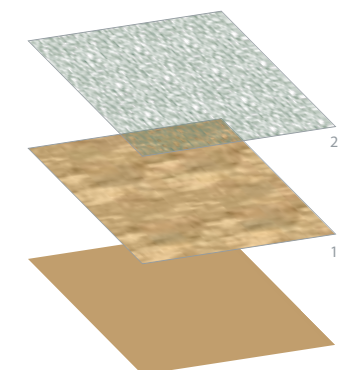
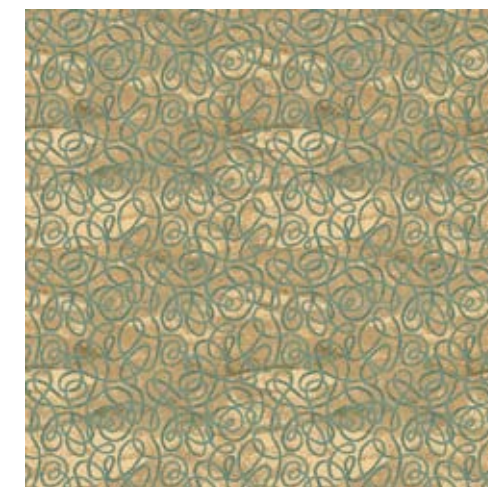
P/6698 C/895  
36.00"W x 36.00"L



BACKGROUND

MODULAR OUTFILL 1

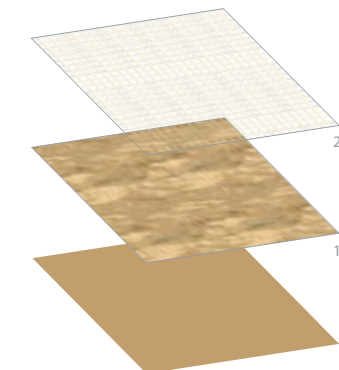
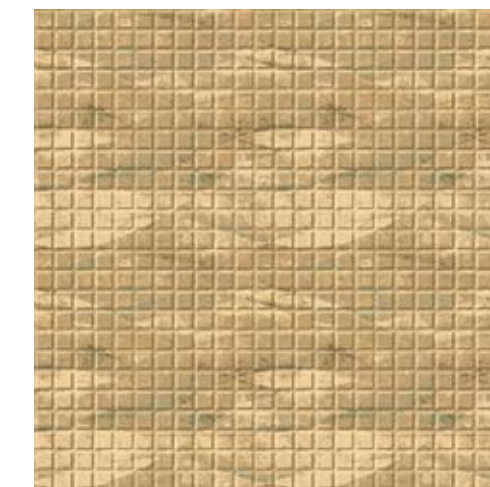
P/6698 C/899  
36.00"W x 36.00"L



BACKGROUND

MODULAR OUTFILL 2

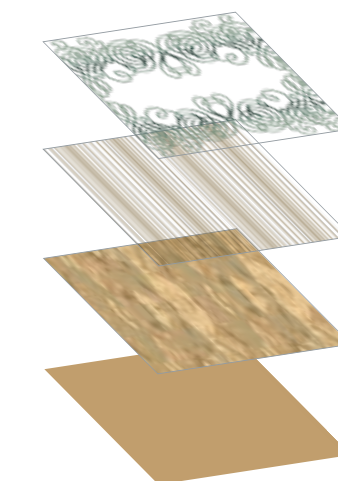
P/6698 C/900  
36.00"W x 36.00"L



BACKGROUND

MODULAR HORIZONTAL BORDER

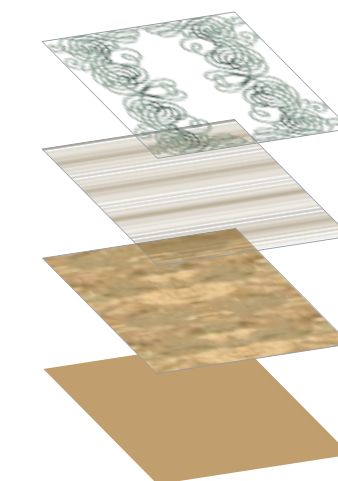
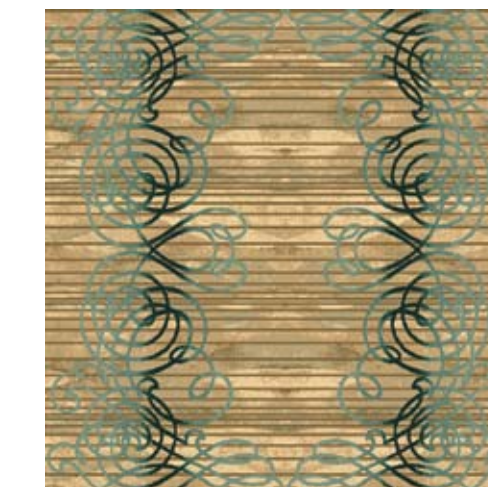
P/6698 C/896  
36.00"W x 36.00"L



BACKGROUND

MODULAR VERTICAL BORDER

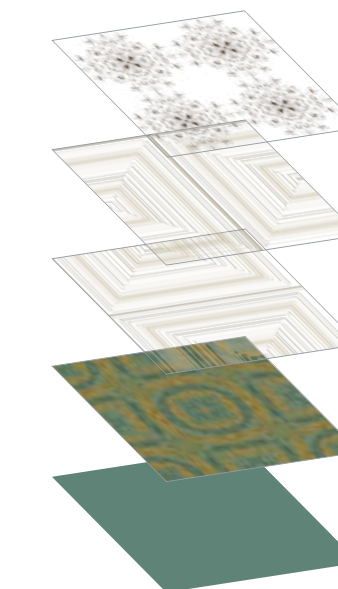
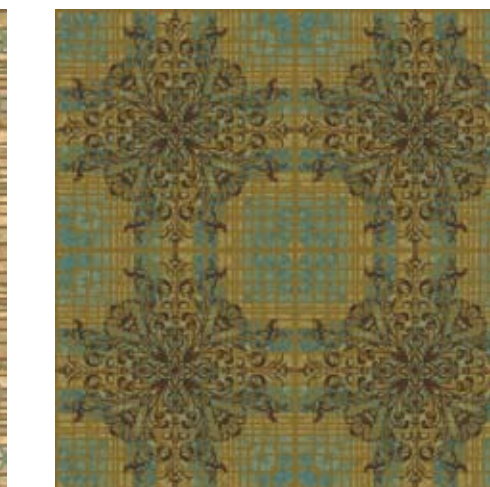
P/6698 C/897  
36.00"W x 36.00"L



BACKGROUND

MODULAR CORNER

P/6698 C/898  
36.00"W x 36.00"L



BACKGROUND





# Orsay

36" MODULAR



Enjoy the extraordinary design flexibility of étage technology in modular carpet. It's easy to handle, can be installed and replaced without disruption, and stores compactly. Integral cushion backing extends wear while providing comfort. Get great performance with less waste.



ORS001

### TO USE ÉTAGE:

1. Select a design as shown, or use étage technology to customize. Add and subtract layers to create your own look. Remember that you must always use at least two layers, one of which must be the background.
2. All designs in this brochure use the 12 colors shown below. Specific colors used in each design are indicated by the color dot below each pattern image. These colors are part of the Milliken Color Library system.
3. Choose a carpet construction that suits your installation. All designs in this brochure are shown in "Royal" cut-pile. Contact your Milliken representative to discuss the carpet construction that's best for you.
4. You can further customize your design by working with the motifs below. Or, you can even bring in motifs from other étage designs. With étage you have ultimate freedom to design.



### ORSAY COLORWAY | ALL COLORS ARE APPROXIMATIONS ONLY



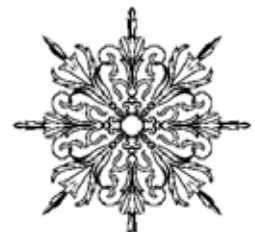
ORS006



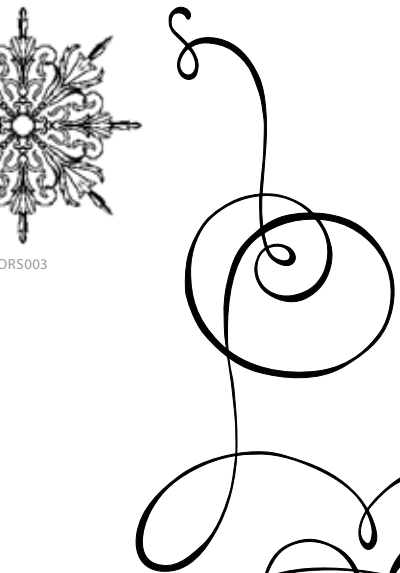
ORS002



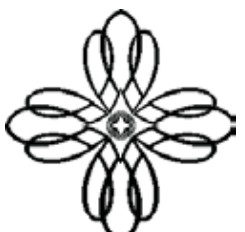
ORS005



ORS003



ORS008



ORS004



ORS007

