



SCATTERGRAPH

Milliken™



INSPIRED. INSPIRING.

Scattergraph provides an organic coordinate, where threads of light and shade create a dappled tonal pattern. Its soft, organic nature works beautifully in a range of color options.

Scattergraph in Cartesian, monolithic tile installation



SCA124-39 PLOT



SCA12-17 CORRELATION



SCA47-124 ARRAY



SCA95-44 AFFINE



SCA15-98 LINE



SCA59-98 ORIGIN



SCA19-47 GRID



SCA95-27 BEST FIT



SCA79-108 HALF SPACE



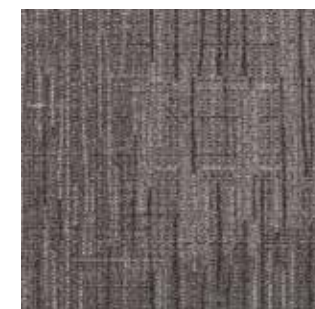
SCA107-108 HYPERPLANE



SCA25-37 INFLUENCE



SCA04-87 SENSOR



SCA108-27 CARTESIAN



SCA25-119 METRICS



SCA119-106 SUBSPACE



SCA100-23 DESIGNATE

SCATTERGRAPH

Construction

Tufted, Textured Loop

Tile Size

50 cm x 50 cm (19.7" x 19.7")

Yarn Type

Milliken-Certified WearOn® Nylon

Stain Resist / Soil Release

StainSmart®

Dye Method

PrintWorks™ Precision Dyeing

Gauge

1/8

Stitches Per Inch

10.3

Tufts

82.4/in² (1,276/100 cm²)

Standard Backing

PVC-Free WellBAC® Comfort Cushion
Available with TractionBack®

Recycled Content by Total Weight

Standard Backing: 36.8% Pre-Consumer, 0.0% Post-Consumer; NSF 140 Platinum Backing Option: 26.8% Pre-Consumer, 10.0% Post-Consumer

Embodied Carbon

16.33 (kg CO₂e)/m²

Nominal Total Thickness

0.32" (8.1 mm)

Nominal Total Weight

95.0 oz/yd² (3,221 g/m²)

Flammability (Radiant Panel ASTM E-648)

≥ 0.45 (Class I)

Smoke Density (NFPA-258-T or ASTM-E-662)

≤ 450

Methenamine Pill Test (CPSC FF-1-70 or ASTM D 2859)

Self-Extinguishing

Lightfastness (AATCC 16E)

≥ 4.0 at 80 Hours

Crocking (AATCC 165)

≥ 4.0 Wet or Dry

Static Electricity (AATCC-134) 20% R.H., 70° F.

≤ 3.5 KV, Permanent Conductive Fiber

Texture Appearance Retention Rating (TARR)

Severe Traffic End-Use Applications

Recommended Maintenance

MilliCare® Textile and Carpet Care Service Network

Indoor Air Quality—CRI Green Label Plus™

GLP0793, Carpet Category 5Y

Recommended Installation Method(s)

Monolithic



MONOLITHIC

SUSTAINABLE FEATURES

Scattergraph is manufactured with WellBAC® Comfort cushion backing, and is certified NSF-140 Gold with 36.8% pre-consumer recycled content by total product weight.

Scattergraph is also available with our NSF-140 Platinum backing option. All Milliken modular carpets carry Environmental Product Declarations and Health Product Declarations, which contribute to LEED certification. Additionally, Milliken modular carpets carry Declare® transparency labels and comply with the Red List Imperative of the Living Building Challenge.™



Declare.



Images in this brochure are approximate for color and pattern scale. Please use actual carpet samples to make your final selections.

SHOWN ON THE COVER

(Front) Scattergraph in Array.
(Back) Scattergraph in Half Space.



Scan to learn more.

Milliken™