



**STRAIGHT TALK 2.0**

Connection / Eye Contact  
Jive / Snap Back 2.0

Milliken™



## INSPIRED. INSPIRING.

Conversation on the surface can seem disorganized. Voices rise and fall. Focus and patterns emerge, organization kicks-in, logic reigns. You see how man uses the rhythm to make a connection. Straight lines. Right angles. New thoughts mixed with foundational ideas. Order out of chaos.



Eye Contact, Connection and Snap Back 2.0 in Sand, monolithic installation

## STRAIGHT TALK 2.0

The original Straight Talk collection has been improved to create a more cohesive group of modular tile patterns that transition superbly from one to another. Snap Back and Eye Contact are still part of the conversation, but are now complemented by Jive and Connection. Jive adds an extra element of movement, while Connection serves a bridge between all of the patterns for smoother transitions.



Connection



Eye Contact



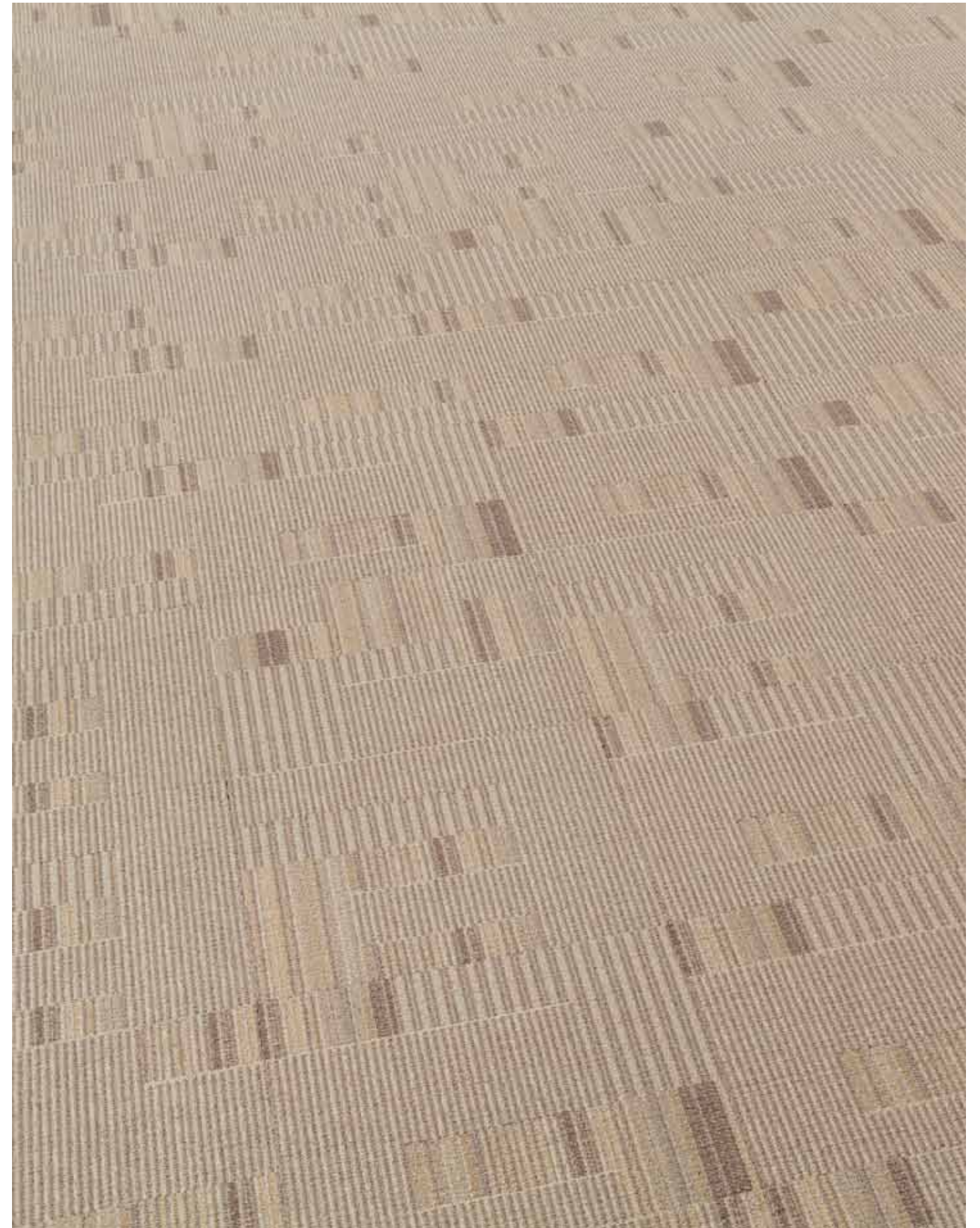
Jive



Snap Back 2.0



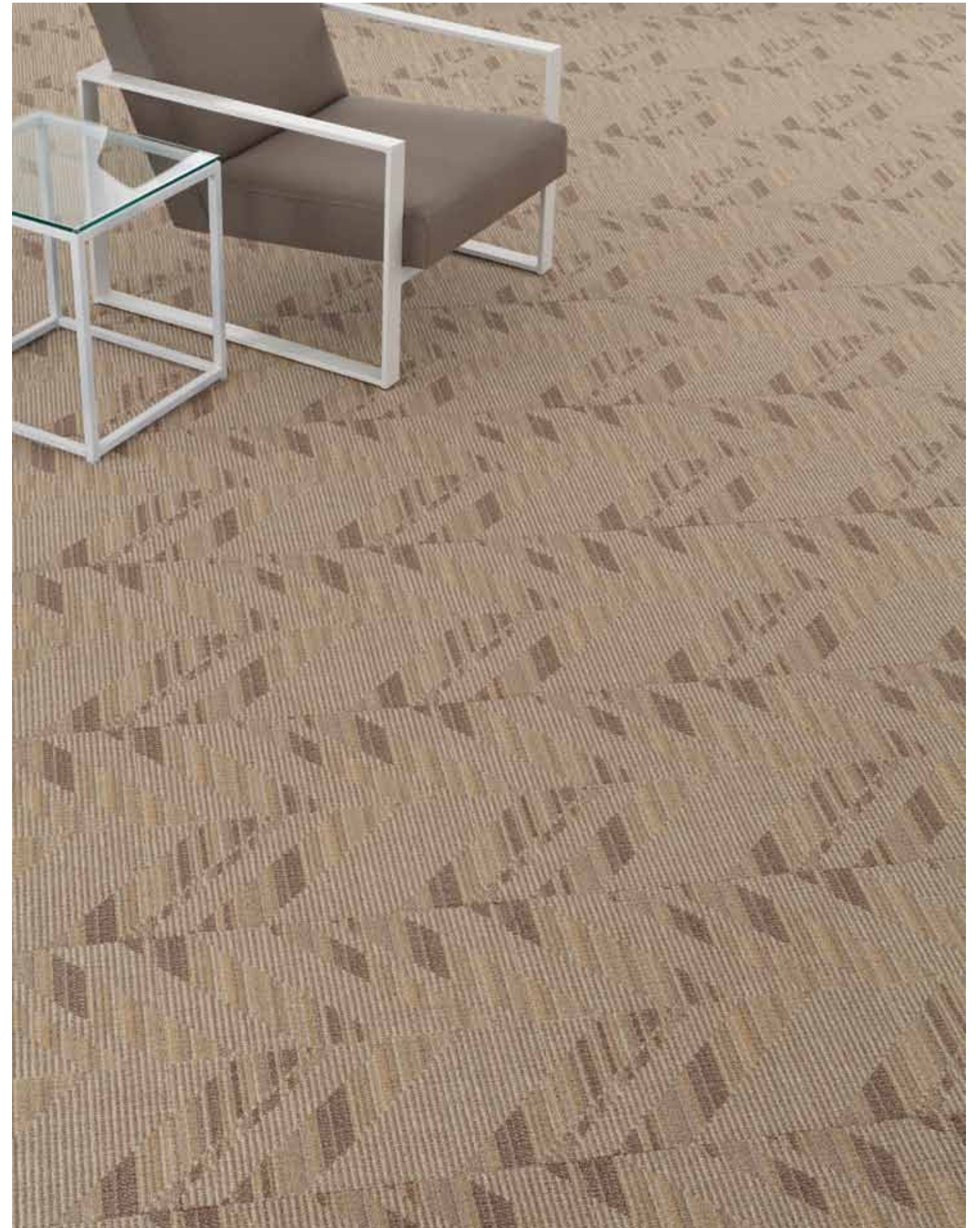
Eye Contact in Sand, monolithic installation



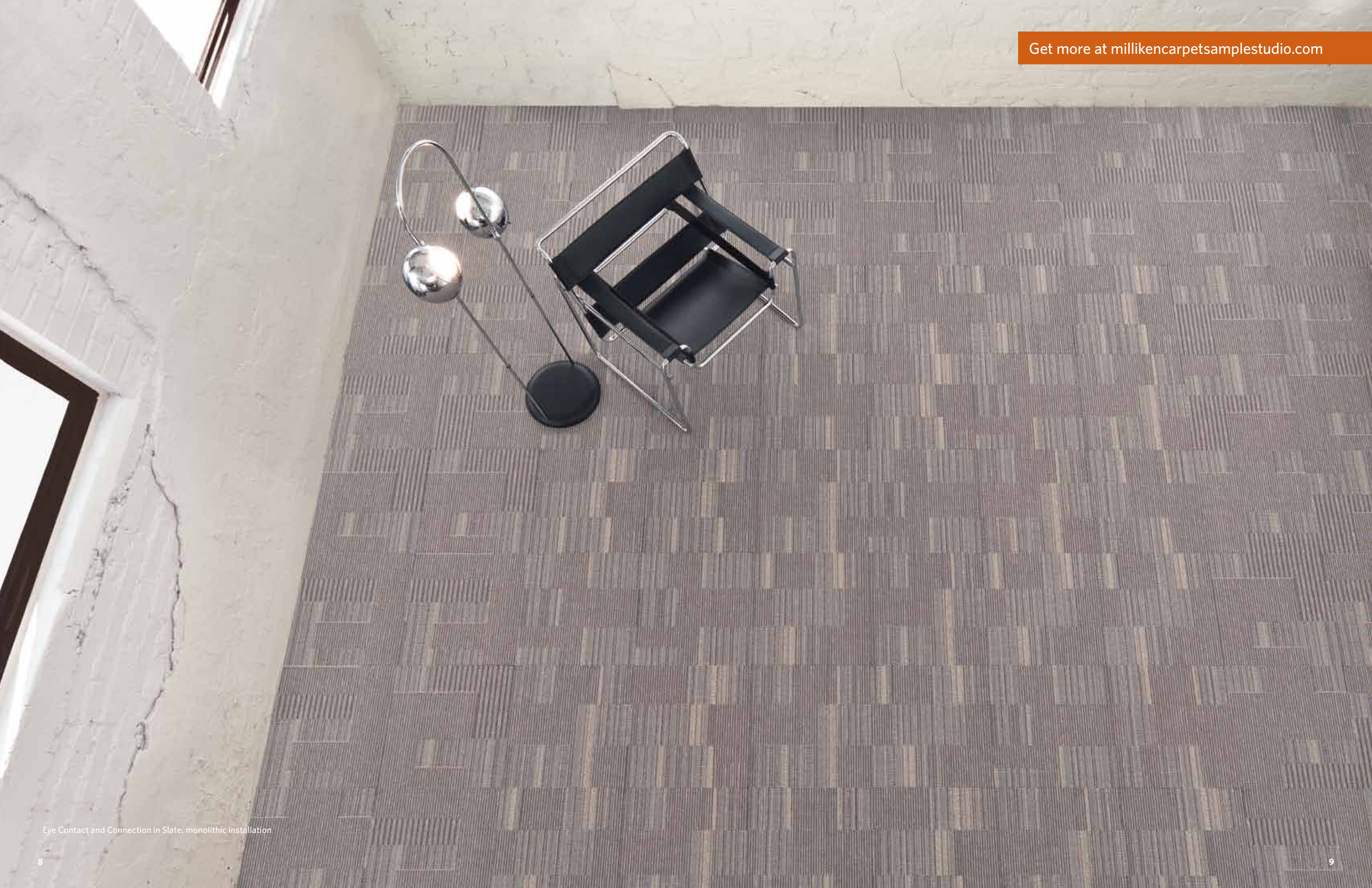
Connection in Sand, monolithic installation



Snap Back 2.0 in Sand, monolithic installation



Jive in Sand, monolithic installation



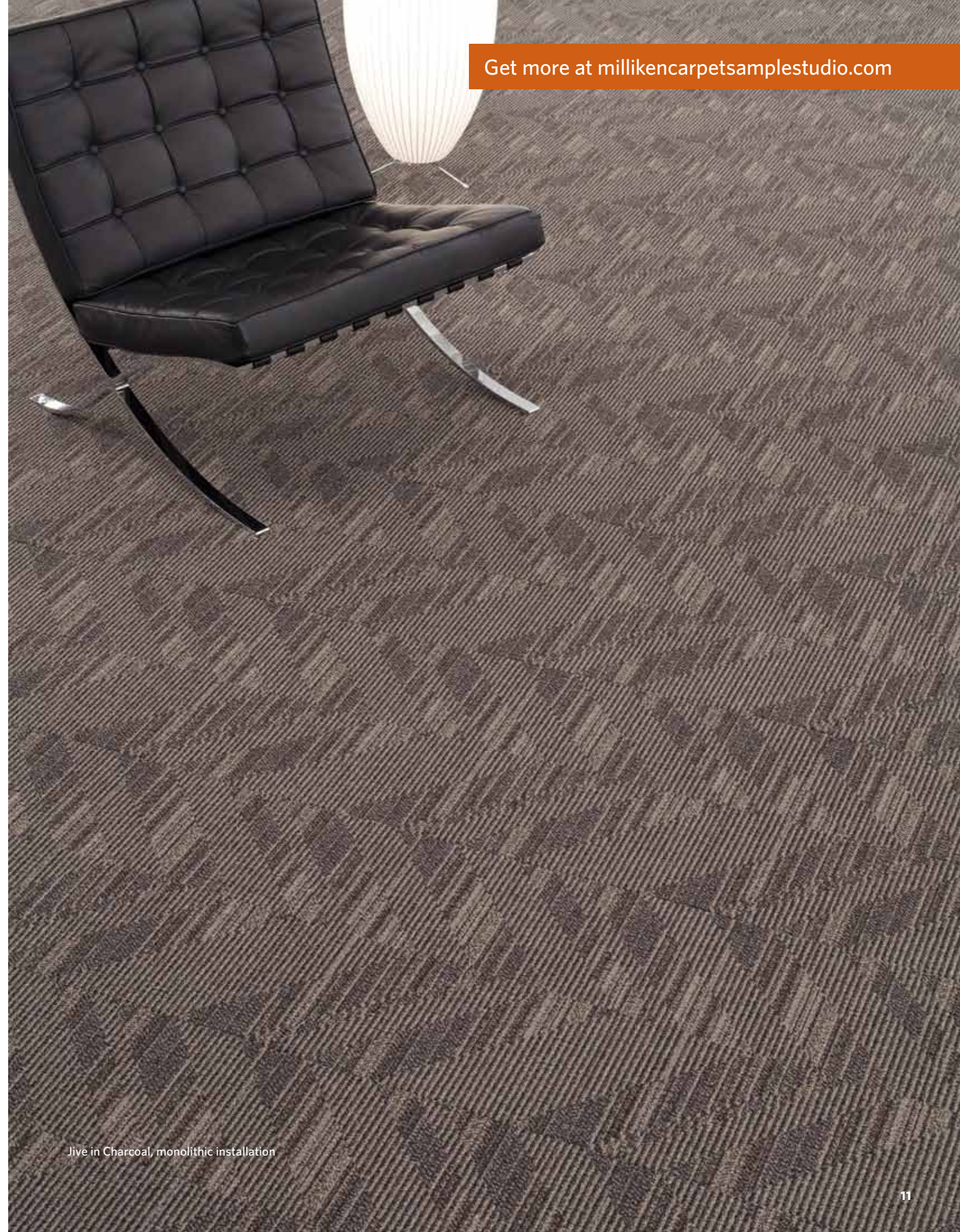
Eye Contact and Connection in Slate, monolithic installation



Snap Back 2.0 in Glacier, monolithic installation



Snap Back 2.0 in Glacier

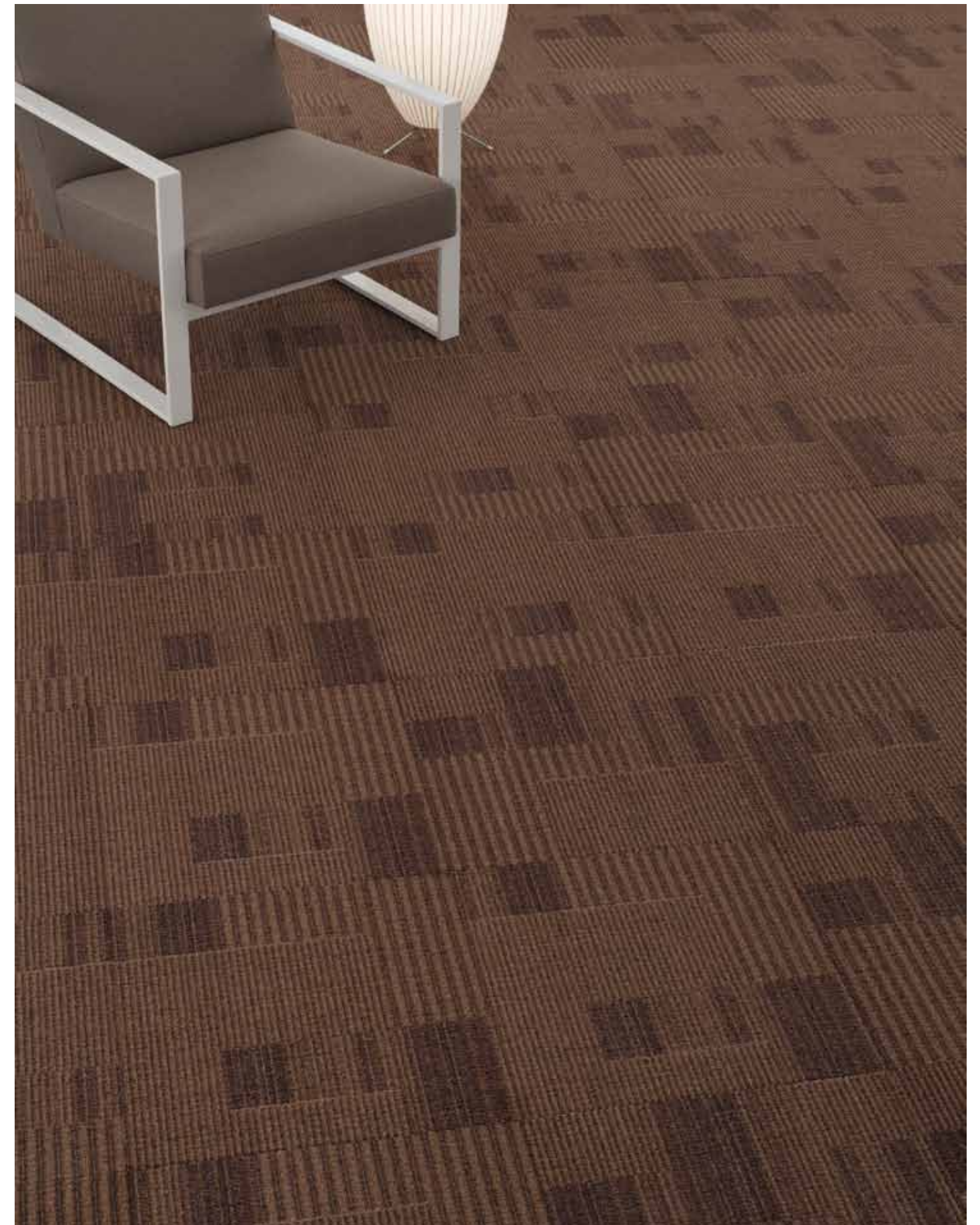


Get more at [millikencarpetsamplestudio.com](http://millikencarpetsamplestudio.com)

Jive in Charcoal, monolithic installation



Eye Contact in Madder, monolithic installation



Connection in Dutch Chocolate, monolithic installation



Eye Contact and Connection in Slate, monolithic installation



**EC513 BASIC GREY**  
(Connection CN613, Jive JV813,  
Snap Back 2.0 SB713)



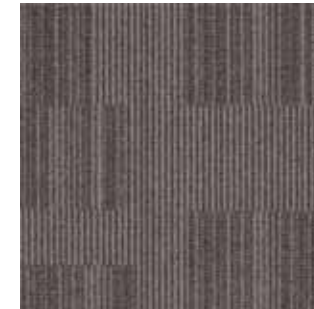
**EC519 CANDLELIGHT SILVER**  
(Connection CN619, Jive JV819,  
Snap Back 2.0 SB719)



**EC514 GLACIER**  
(Connection CN614, Jive JV814,  
Snap Back 2.0 SB714)



**EC510 CANVAS**  
(Connection CN610, Jive JV810,  
Snap Back 2.0 SB710)



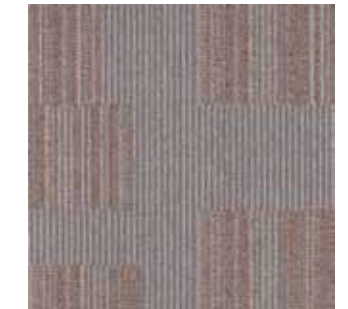
**EC517 BEDROCK**  
(Connection CN617, Jive JV817,  
Snap Back 2.0 SB717)



**EC516 CHARCOAL**  
(Connection CN616, Jive JV816,  
Snap Back 2.0 SB716)



**EC520 GRAVEL**  
(Connection CN620, Jive JV820,  
Snap Back 2.0 SB720)



**EC511 RIVER ROCK**  
(Connection CN611, Jive JV811,  
Snap Back 2.0 SB711)



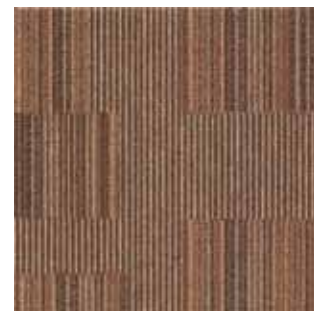
**EC501 SAND**  
(Connection CN601, Jive JV801,  
Snap Back 2.0 SB701)



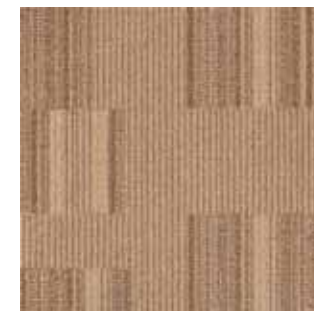
**EC504 QUAIL**  
(Connection CN604, Jive JV804,  
Snap Back 2.0 SB704)



**EC507 DUTCH CHOCOLATE**  
(Connection CN607, Jive JV807,  
Snap Back 2.0 SB707)



**EC508 RUSSET**  
(Connection CN608, Jive JV808,  
Snap Back 2.0 SB708)



**EC502 CAMEL**  
(Connection CN602, Jive JV802,  
Snap Back 2.0 SB702)



**EC505 FAWN**  
(Connection CN605, Jive JV805,  
Snap Back 2.0 SB705)



**EC523 LICHEN**  
(Connection CN623, Jive JV823,  
Snap Back 2.0 SB723)



**EC522 MINERAL**  
(Connection CN622, Jive JV822,  
Snap Back 2.0 SB722)



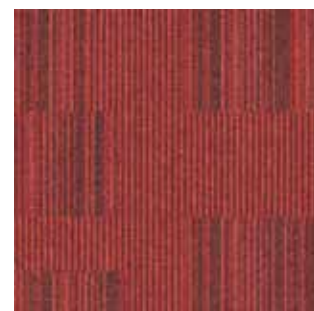
**EC503 CITRON**  
(Connection CN603, Jive JV803,  
Snap Back 2.0 SB703)



**EC506 MANGO**  
(Connection CN606, Jive JV806,  
Snap Back 2.0 SB706)



**EC509 CALIFORNIA POPPY**  
(Connection CN609, Jive JV809,  
Snap Back 2.0 SB709)



**EC512 MADDER**  
(Connection CN612, Jive JV812,  
Snap Back 2.0 SB712)



**EC515 BERRY**  
(Connection CN615, Jive JV815,  
Snap Back 2.0 SB715)



**EC518 VIOLET**  
(Connection CN618, Jive JV818,  
Snap Back 2.0 SB718)



**EC521 SLATE**  
(Connection CN621, Jive JV821,  
Snap Back 2.0 SB721)



**EC524 LEAF**  
(Connection CN624, Jive JV824,  
Snap Back 2.0 SB724)



# STRAIGHT TALK 2.0

Connection / Eye Contact / Jive / Snap Back 2.0

Have you seen our other collections? Visit us online today.



Windows



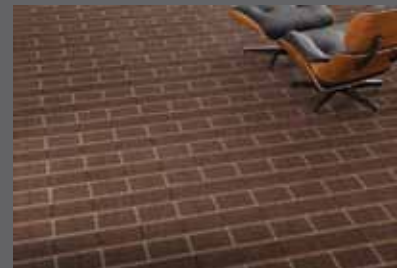
Monuments & Shrines



Out of the Shadows



Broad Weave



## Construction

Tufted, textured loop

## Tile sizes

50cm. x 50cm. (19.7 X 19.7 In.)

## Yarn type

Milliken-certified WearOn® nylon type 6,6

## Stain repel / stain resist / soil release

StainSmart®

## Tufted face weight

19 oz./Sq.Yd. (644.2 G./Sq.M.)

## Pile height

0.08 In. (2.0 mm.) Average

## Average density

8,222

## Standard backing

PVC-Free Underscore™ ES cushion

This cushion-back carpet tile product is covered by one or more patents, published applications and/or patents pending. Specifications are subject to normal manufacturing tolerances and may be changed without prior notice.

## Recommended installation methods



MONOLITHIC



Gold of Platinum Certified  
NSF-ANSI 140-2007a  
International Carpet Association



**Growing greener for over 100 years.**  
Visit [milliken.com](http://milliken.com) for more information.

Customer Concierge 800.528.8453 | [milliken.com](http://milliken.com)  
Design © Milliken & Company | Made in the USA

Cover image: *Stack of old audio cassettes*, by Roman Sulla. ©2012, Shutterstock