



**COLLECTIVE  
MIND**

*Milliken*<sup>™</sup>

**D/LUX**

**LUXURY DEMATERIALIZED**

# COLLECTIVE MIND

The Collective Mind collection embodies a universal sense of comfort and visual intrigue. With a focus on texture and organic surfaces, this collection is a continuation of Milliken's steadfast environmental stewardship. Classics are made new in 4 distinctive patterns and 24 colors, bringing forth a revitalized vintage sensibility.





## SYNCHRONICITY

## UNION



## TRANSCEND

## ENLIGHTEN

Centered on patterns found in nature, Collective Mind provides a calming backdrop in any space. Flowing striated lines are reminiscent of time-worn canyon walls, while bolder patterns mimic tree bark. These contrasting patterns are individually unique while also acting as complementary designs to each other.



# D/LUX

LUXURY DEMATERIALIZED

Collective Mind's nature-inspired aesthetics echo its sustainable composition, reflecting a movement in design that brings us together for the greater good. As a continuation of our D/LUX story, this collection is composed of recycled materials, using less raw materials while enhancing style.



## PRINTWORKS

Experience creative freedom with our PrintWorks technology. Bring your individualized design vision to life with customized colors and unique patterning that integrates across floors without visual disruption.



Colors found in nature extend a sense of familiarity while inviting a closer look. Anchored in a selection of warm neutrals, this collection's more saturated options provide a layer of depth and mystery.

# SYNCHRONICITY

# UNION

Scan to view in the product catalog.



**HARMONY**  
SYN76-219



**CURIOUS**  
SYN118-218



**ALIGN**  
SYN174-257



**SERENE**  
SYN5-265



**MERGE**  
SYN219-105



**RELATE**  
SYN105-219



**HARMONY**  
UNN76-219



**CURIOUS**  
UNN118-218



**ALIGN**  
UNN174-257



**SERENE**  
UNN5-265



**MERGE**  
UNN219-105



**RELATE**  
UNN105-219



**CENTERED**  
SYN96-219



**MARVEL**  
SYN207-165



**CONNECT**  
SYN213-13



**IMPRINT**  
SYN73-265



**ATTRACT**  
SYN265-283



**OMEN**  
SYN283-257



**CENTERED**  
UNN96-219



**MARVEL**  
UNN207-165



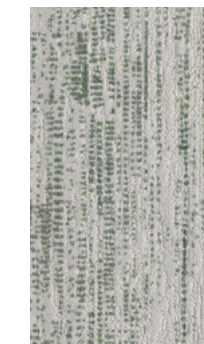
**CONNECT**  
UNN213-13



**IMPRINT**  
UNN73-265



**ATTRACT**  
UNN265-283



**OMEN**  
UNN283-257



**JOIN**  
SYN219-287



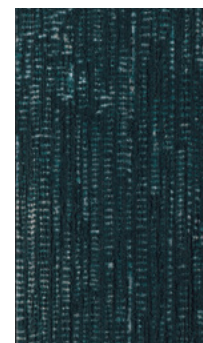
**FUSE**  
SYN208-145



**SIGN**  
SYN217-5



**LINK**  
SYN204-153



**BALANCE**  
SYN201-288



**SHARED**  
SYN201-218



**JOIN**  
UNN219-287



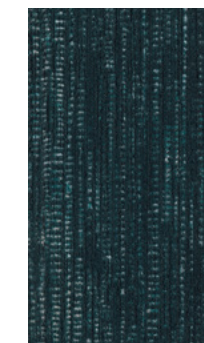
**FUSE**  
UNN208-145



**SIGN**  
UNN217-5



**LINK**  
UNN204-153



**BALANCE**  
UNN201-288



**SHARED**  
UNN201-218



**WONDER**  
SYN21-235



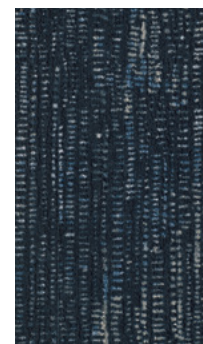
**ASSEMBLE**  
SYN204-133



**COMPOSE**  
SYN133-13



**REFLECT**  
SYN285-119



**GATHER**  
SYN207-107



**ENERGY**  
SYN107-218



**WONDER**  
UNN21-235



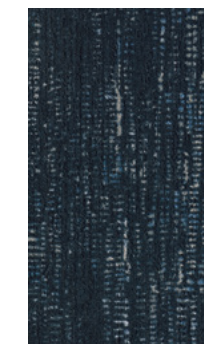
**ASSEMBLE**  
UNN204-133



**COMPOSE**  
UNN133-13



**REFLECT**  
UNN285-119



**GATHER**  
UNN207-107



**ENERGY**  
UNN107-218



# TRANSCEND

# ENLIGHTEN

Scan to view in the product catalog.



**HARMONY**  
TRA76-219



**CURIOUS**  
TRA118-218



**ALIGN**  
TRA174-257



**SERENE**  
TRA5-265



**MERGE**  
TRA219-105



**RELATE**  
TRA105-219



**CENTERED**  
TRA96-219



**MARVEL**  
TRA207-165



**CONNECT**  
TRA213-13



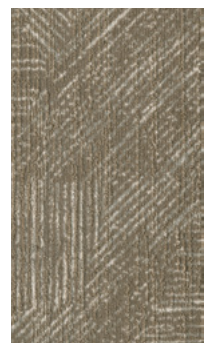
**IMPRINT**  
TRA73-265



**ATTRACT**  
TRA265-283



**OMEN**  
TRA283-257



**JOIN**  
TRA219-287



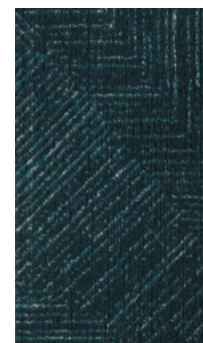
**FUZE**  
TRA208-145



**SIGN**  
TRA217-5



**LINK**  
TRA204-153



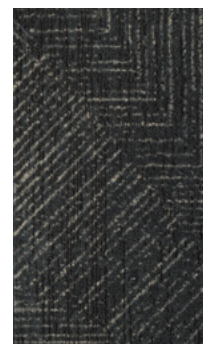
**BALANCE**  
TRA201-288



**SHARED**  
TRA201-218



**WONDER**  
TRA21-235



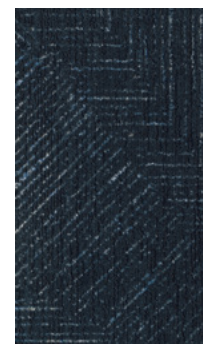
**ASSEMBLE**  
TRA204-133



**COMPOSE**  
TRA133-13



**REFLECT**  
TRA285-119



**GATHER**  
TRA207-107



**ENERGY**  
TRA107-218



**HARMONY**  
ELN76-219



**CURIOUS**  
ELN118-218



**ALIGN**  
ELN174-257



**SERENE**  
ELN5-265



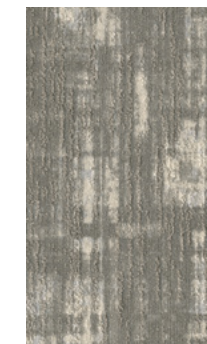
**MERGE**  
ELN219-105



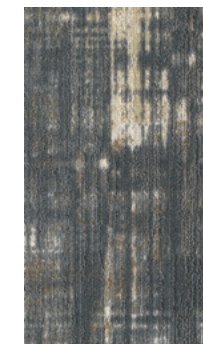
**RELATE**  
ELN105-219



**CENTERED**  
ELN96-219



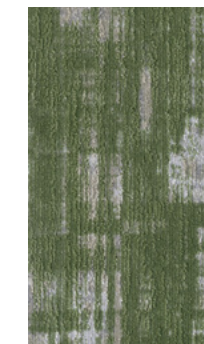
**MARVEL**  
ELN207-165



**CONNECT**  
ELN213-13



**IMPRINT**  
ELN73-265



**ATTRACT**  
ELN265-283



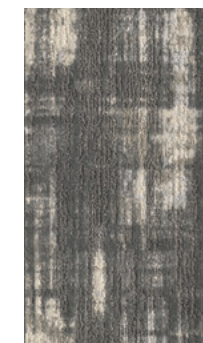
**OMEN**  
ELN283-257



**JOIN**  
ELN219-287



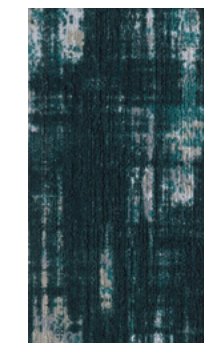
**FUZE**  
ELN208-145



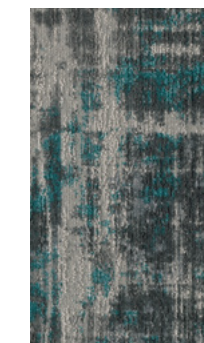
**SIGN**  
ELN217-5



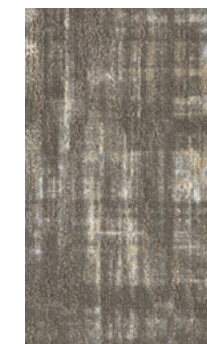
**LINK**  
ELN204-153



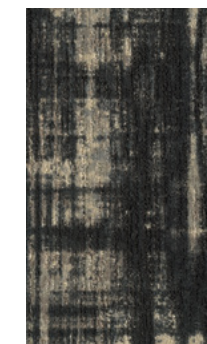
**BALANCE**  
ELN201-288



**SHARED**  
ELN201-218



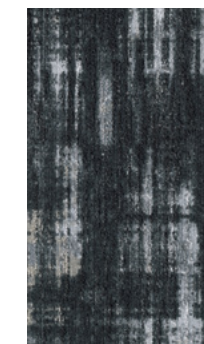
**WONDER**  
ELN21-235



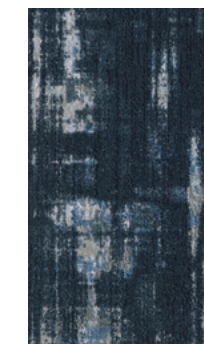
**ASSEMBLE**  
ELN204-133



**COMPOSE**  
ELN133-13



**REFLECT**  
ELN285-119



**GATHER**  
ELN207-107



**ENERGY**  
ELN107-218

# Milliken™ FOR HUMANKIND.



## RED LIST FREE

Healthy materials are the foundation for effective circularity, reducing community pollution and cleaner living for all.

- The Living Building Challenge Red List contains the “worst in class” materials, chemicals and elements known to pose serious risks to human health and the greater ecosystem.
- Red List Free certification is the absence of Red List chemicals in building and home furnishings.
- Our products have been completely vetted and verified to contain no Red List Chemicals at levels at or above 100 ppm or 0.01 percent.
- Affords superior recycling potential of clean-based products.

Achieving LBC Red List Free is a commitment to significantly cut down on the output and use of harmful chemicals. It reflects our company’s prioritization on human health and ensuring a brighter future for generations to come.

## M/PACT™ Carbon Neutral Product

Climate change is one of the greatest threats facing humanity. That’s why our modular flooring products are carbon neutral everywhere in the world. Let’s work together for a better tomorrow.

## Sustainable features

**Collective Mind** is manufactured with PVC-Free WellBAC® Comfort cushion backing, and is certified NSF-140 Gold. Made in the USA, **Collective Mind** is also available with our NSF-140 Platinum backing option. All Milliken modular carpets carry Environmental Product Declarations and Health Product Declarations, which contribute to LEED certification. Additionally, Milliken modular carpets carry Declare® transparency labels and comply with the Red List Imperative of the Living Building Challenge.™



**M/PACT™ CARBON NEUTRAL PROGRAM**



Scan to learn more about our commitment to sustainability.

# COLLECTIVE MIND

Synchronicity / Union

Transcend / Enlighten

## Construction

Tufted, Textured  
Loop and Cut Pile

## Plank Size

25 cm x 1 m  
(9.84" x 39.4")

## Yarn Type

Milliken-Certified  
WearOn® Nylon

## Stain Resist / Soil Release

StainSmart®

## Nominal Total Thickness

0.33" (8.4 mm)

## Average Density (Finished)

5,300

## Standard Backing

PVC-Free WellBAC®  
Comfort Cushion  
Available with  
TractionBack®

## Texture Appearance Retention Rating (TARR)

Heavy Traffic End-Use  
Applications

## Recommended Installation Method(s)

All Plank Methods



ALL PLANK  
METHODS

## SUSTAINABLE FEATURES

**Collective Mind** is manufactured with PVC-Free WellBAC® Comfort cushion backing, and is certified NSF-140 Gold. **Collective Mind** is also available with our NSF-140 Platinum backing option. All Milliken modular carpets carry Environmental Product Declarations and Health Product Declarations, which contribute to LEED certification.



Declare.



## M/PACT™ CARBON NEUTRAL PROGRAM

### TRACTIONBACK

Simplify your modular installation with Milliken's patented TractionBack®, an innovative backing system that is faster, more cost efficient, and environmentally superior to wet adhesives and peel-and-stick carpet tile.

### SHOWN ON THE COVER

(Front) Transcend in Harmony TRA76-219. Herringbone.  
Union in Harmony UNN76-219. Monolithic.  
(Back) Enlighten in Relate ELN105-219. Vertical ashlar.

Scan to explore the  
collection story.



Milliken™