



FIRST SIGHT

Milliken™





First Sight highlights the interplay between land and sea, capturing the moment when first light breaks on tranquil water. Subtle textures distinguish two organic patterns, providing the power to bridge spaces and define zones, and 14 neutral colors usher in serene floorscapes across a versatile range of spaces. Utilizing regenerated nylon, this product embodies Milliken's steadfast commitment to sustainable design.







## SANDSCAPE

A soft, pebbled motif celebrates a meeting point of land and sea.

Earthy tones and granular aesthetics bring to mind the softness of sun-warmed sand.



## SURFACE CURRENT

This bold, curvilinear pattern is reminiscent of shadows dancing across the ocean floor. The layered textures and contrasting lines invite a second look.



Sandscape in Shell SAD251-145 and Surface Current in Dune  
SUF251-217. Horizontal Ashlar. 50cm x 50cm tiles.

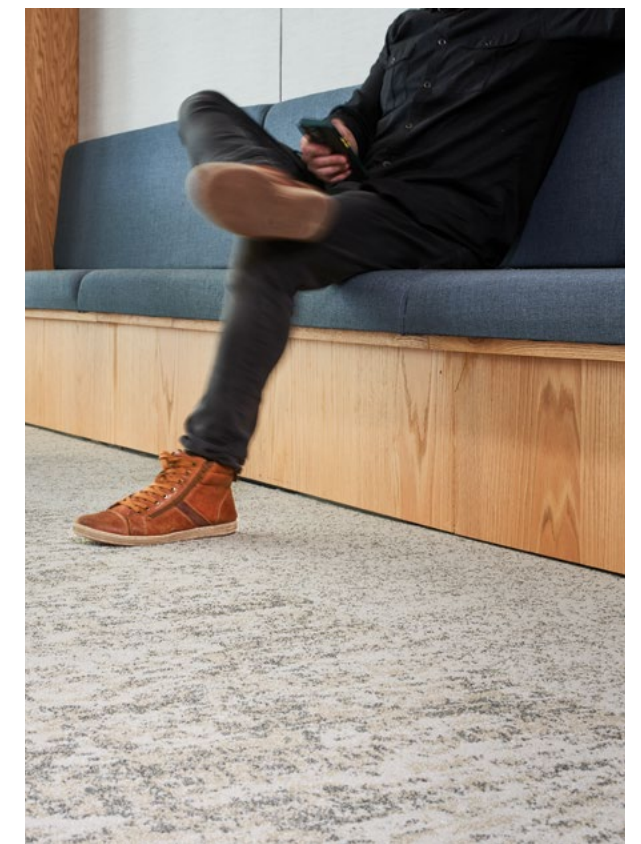








Elevate the tactile appeal of floorscapes. Dynamic patterns are softened by a soothing textured surface, celebrating the juxtaposition of bold and understated. This highly coveted element brings a timeless beauty.



(Top) Sandscape in Rise SAD254-217. (Bottom Left) Sandscape in Glint SAD13-220. Horizontal Ashlar. 50cm x 50cm tiles. (Bottom Right) Sandscape in Glint SAD13-220 and Surface Current in Glint SUF13-220. Horizontal Ashlar. 50cm x 50cm tiles.





Embrace the organic charm of First Sight, where natural aesthetics meet hardworking functionality. Its composition is sustainability-driven through the use of regenerated nylon, a product derived from recycled fishing nets. Constructed on the lasting support of WellBAC® Comfort Cushion, First Sight delivers superior performance capabilities to mitigate moisture, reduce noise, and improve comfort.



Create a sense of structured flow with zone-defining capabilities. A welcome palette of warm neutrals are tastefully accented with metallic glimmers, similar to the reflective glow of sunlight on the ocean's surface.

## SANDSCAPE

## SURFACE CURRENT



**TIDAL** SAD152-118



**GLINT** SAD13-220



**DUNE** SAD251-217



**SHIMMER** SAD251-13



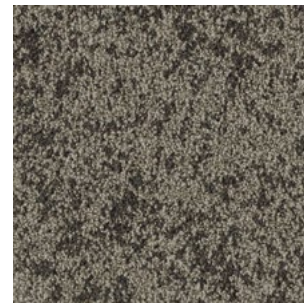
**SHOAL** SAD250-174



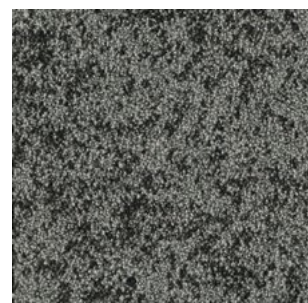
**RISE** SAD254-217



**SHELL** SAD251-145



**FLOW** SAD254-235



**BANK** SAD254-234



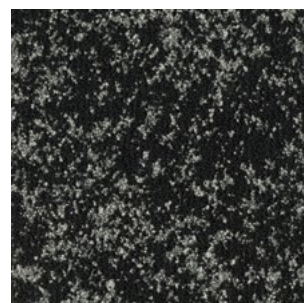
**REEF** SAD152-220



**EMERGE** SAD254-59



**DRIFT** SAD235-19



**REFLECT** SAD174-133



**LEDGE** SAD254-133



**TIDAL** SUF152-118



**GLINT** SUF13-220



**DUNE** SUF251-217



**SHIMMER** SUF251-13



**SHOAL** SUF250-174



**RISE** SUF254-217



**SHELL** SUF251-145



**FLOW** SUF254-235



**BANK** SUF254-234



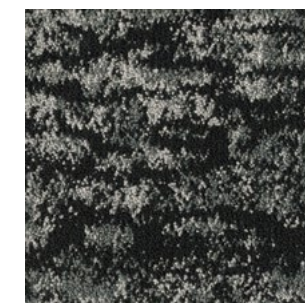
**REEF** SUF152-220



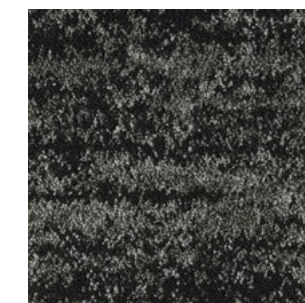
**EMERGE** SUF254-59



**DRIFT** SUF235-19



**REFLECT** SUF174-133



**LEDGE** SUF254-133



# Milliken™ FOR HUMANKIND.



## RED LIST FREE

Healthy materials are the foundation for effective circularity, reducing community pollution and cleaner living for all.

- The Living Building Challenge Red List contains the “worst in class” materials, chemicals and elements known to pose serious risks to human health and the greater ecosystem.
- Red List Free certification is the absence of Red List chemicals in building and home furnishings.
- Our products have been completely vetted and verified to contain no Red List Chemicals at levels at or above 100 ppm or 0.01 percent.
- Affords superior recycling potential of clean-based products.

Achieving LBC Red List Free is a commitment to significantly cut down on the output and use of harmful chemicals. It reflects our company’s prioritization on human health and ensuring a brighter future for generations to come.

## M/PACT™ Carbon Neutral Product

Climate change is one of the greatest threats facing humanity. That’s why our modular flooring products are carbon neutral everywhere in the world. Let’s work together for a better tomorrow.

## Sustainable features

**First Sight** is manufactured with PVC-Free WellBAC® Comfort cushion backing, and is certified NSF-140 Gold. Made in the USA, **First Sight** is also available with our NSF-140 Platinum backing option. All Milliken modular carpets carry Environmental Product Declarations and Health Product Declarations, which contribute to LEED certification. Additionally, Milliken modular carpets carry Declare® transparency labels and comply with the Red List Imperative of the Living Building Challenge.™



**M/PACT™** CARBON NEUTRAL PROGRAM



Scan to learn more about our  
commitment to sustainability.





# FIRST SIGHT

## Sandscape / Surface Current

**Construction**  
Tufted, Textured Loop

**Tile Size**  
50 cm x 50 cm  
(19.7" x 19.7")

**Yarn Type**  
ECONYL® Solution-Dyed  
Recycled Nylon

**Stain Resist / Soil Release**  
StainSmart®

**Finished Pile Thickness**  
Sandscape: 0.09"  
(2.286 mm)  
Surface Current: 0.09"  
(2.286 mm)

**Average Density (Finished)**  
Sandscape: 7,800  
Surface Current: 7,800

**Standard Backing**  
PVC-Free WellBAC®  
Comfort Cushion

**Texture Appearance Retention Rating (TARR)**  
Severe

**Recommended Installation Method(s)**  
Horizontal Ashlar,  
Monolithic



HORIZONTAL  
ASHLAR



MONOLITHIC

### SUSTAINABLE FEATURES

**First Sight** is manufactured with PVC-Free WellBAC® Comfort cushion backing, and is certified NSF-140 Gold. **First Sight** is also available with our NSF-140 Platinum backing option. All Milliken modular carpets carry Environmental Product Declarations and Health Product Declarations, which contribute to LEED certification. Additionally, Milliken modular carpets carry Declare® transparency labels and comply with the Red List Imperative of the Living Building Challenge.™



### M/PACT™ CARBON NEUTRAL PROGRAM

M/PACT carbon neutral products offset the raw materials and manufacturing carbon footprint\* by using 3rd party Verified Carbon Standard Credits that support renewable energy and carbon reduction technologies to help fight climate change. When you choose M/PACT products, you can be sure your choice is carbon neutral.

### SHOWN ON THE COVER

(Front) Sandscape in Rise SAD254-217, Surface Current in Rise SUF254-217 and Emerge SUF254-59. Horizontal Ashlar. (Back) Surface Current in Shimmer SUF251-13 and Glint SUF13-220. Monolithic.

\*As calculated and verified scope A1-3 GWP through a ISO14025/ISO14040 compliant LCA and published in third party EPDs.

Images in this brochure and architect folder are approximate for color and pattern scale. Please use actual carpet samples to make your final selections.

Scan to explore the collection story.



Milliken™